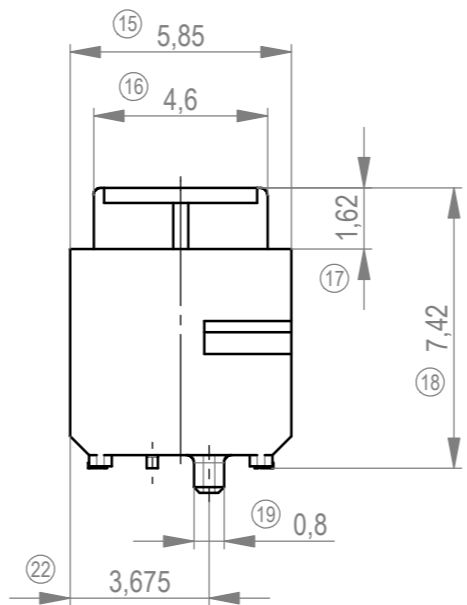
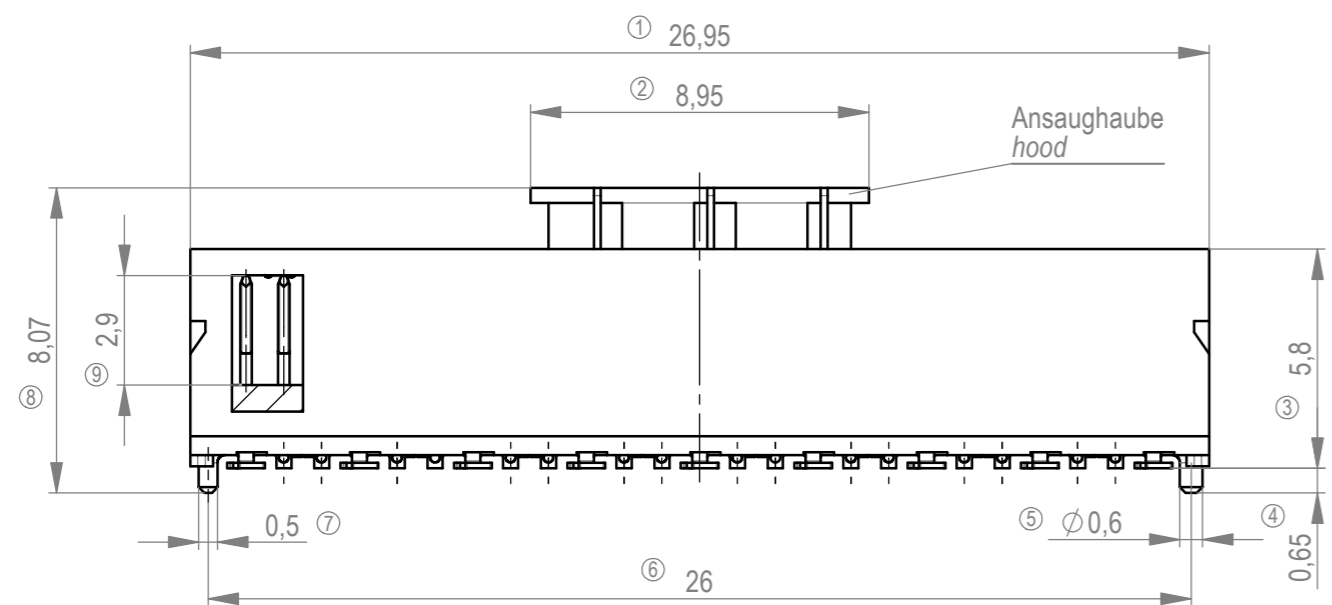
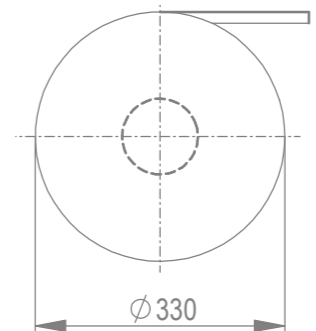
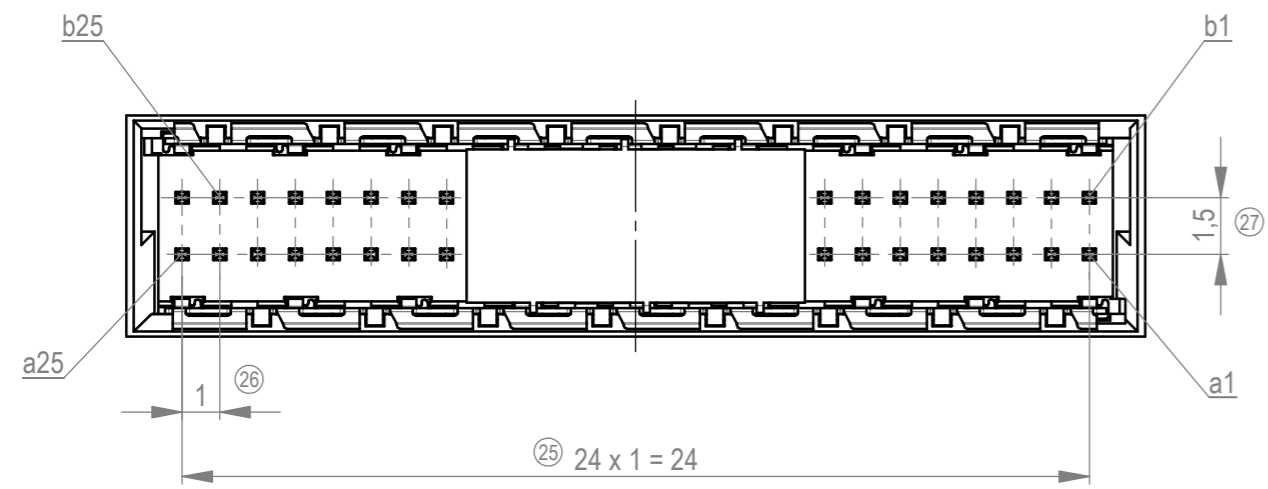
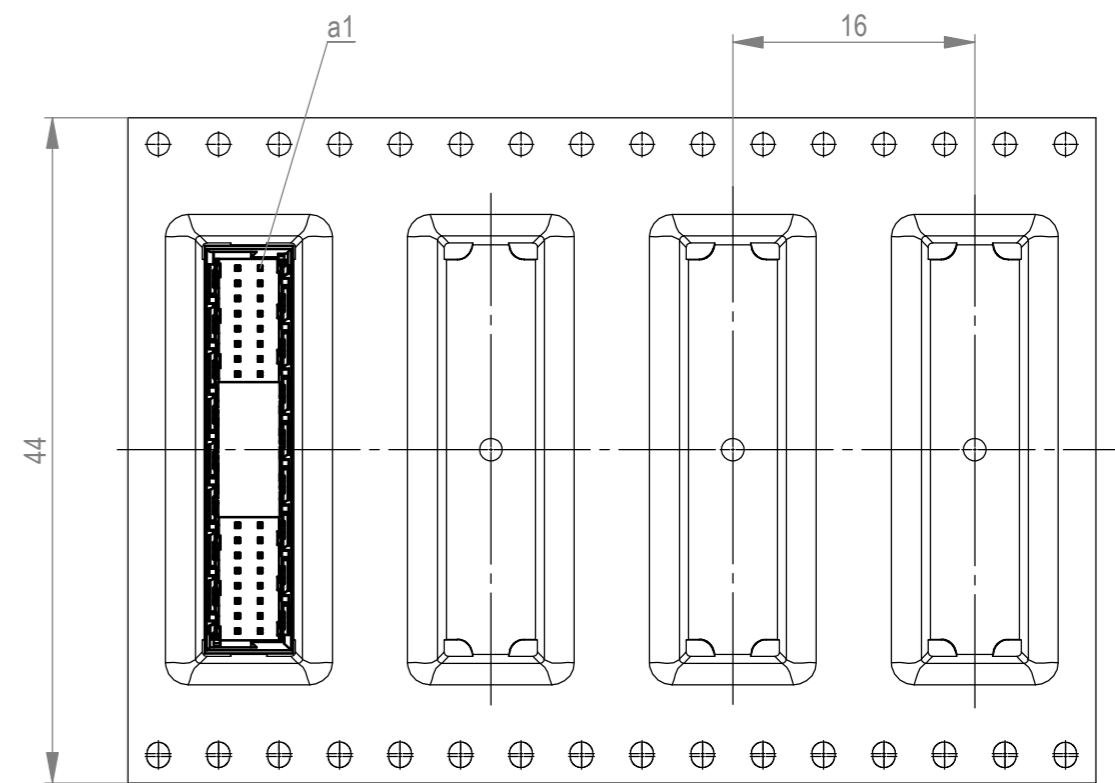


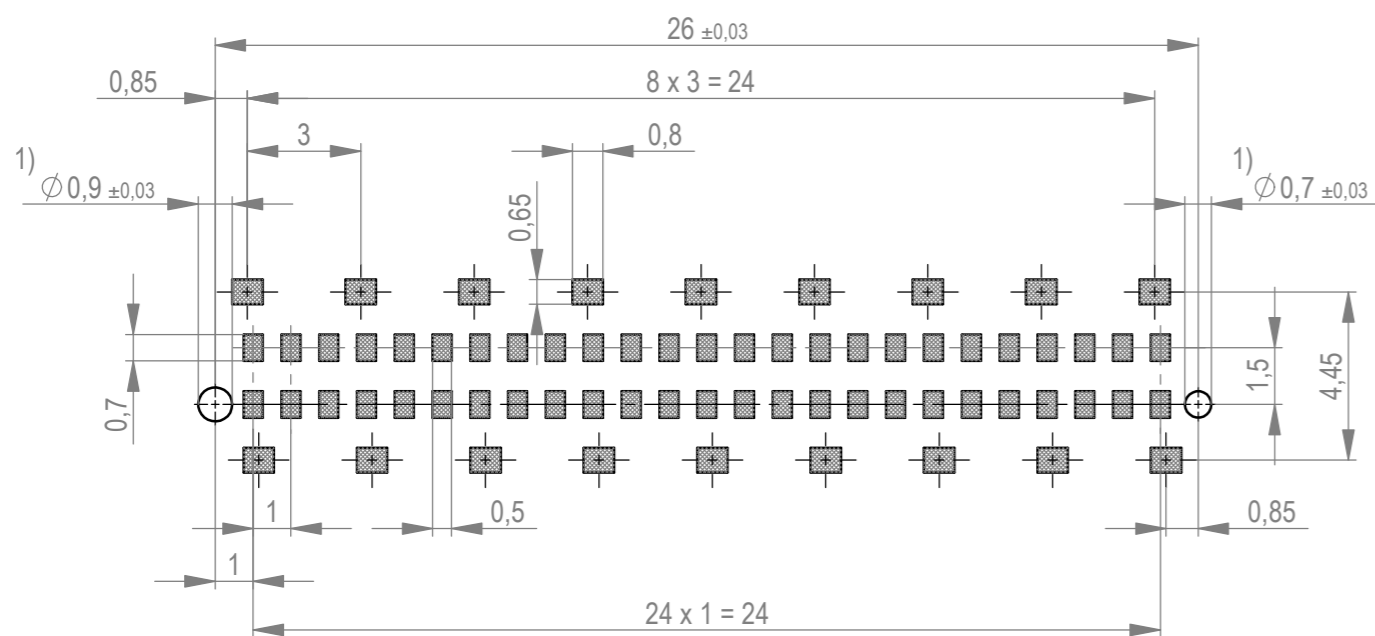
Verpackt im Gurt in Anlehnung an DIN IEC 60286-3
 tape on reel packaging according to DIN IEC 60286-3
 Vorlaufband 400 mm / Nachlaufband 160 mm
 leader 400 mm / trailer 160 mm
 Verpackungseinheit: 400 Stück
 packaging unit: 400 pcs



Abspulrichtung - reel off direction



Leiterplatten-Layout Vorschlag / PCB-Layout proposal



1) Durchmesser des Bohrers / drill tool

Koplanarität der Anschlüsse ≤ 100 μm
 coplanarity area of termination ≤ 100 μm

Material Kontaktstifte und Schirmbleche: / material contacts and shield: CuSn6
 Material Gehäuse: / material housing: LCP 30% GF, E 130 i Fa. Ticona
 Material Ansaughhaube: / material hood: LCP 30% GF, E 130 i Fa. Ticona
 Oberfläche Lötanschlüsse: / plating solder connection: 1,5-3 μm Ni, 2-6 μm Sn mt
 Oberfläche Steckbereich, Kontakte und Schirmbleche: 1-3 μm Ni, 0,65 μm PdNi, 0,10 μm Au
 plating mating area, contacts and shield: 1-3 μm Ni, 0,65 μm PdNi, 0,10 μm Au

Dimension no. 1 - 40 not assigned dimension no.: 10-14, 20, 21, 23, 24, 28, 30-34	Tolerances ISO 2768-mH ISO 8015		Scale 5:1 Material
Customer drawing: This Drawing is a controlled Document.	Subject to modification without prior notice. Drawing will not be updated.		Male Straight 02mm SMT 50p Standard 2row C-224557-E
k1 Index	18.05.2023 Date	TE Connectivity Class MSPEED	

Die deutsche Version dieser Zeichnung dient nur zur Erleichterung der
 Handhabung. Bei Abweichungen vom englischen Original gilt das
 englische Original. / This drawing has been created for convenience only
 and may deviate from the original.
 In case of any deviation the English version shall prevail.
 Die deutsche Version dieser Zeichnung dient nur zur Erleichterung der
 Handhabung. Bei Abweichungen vom englischen Original gilt das
 englische Original. / This drawing has been created for convenience only
 and may deviate from the original.
 In case of any deviation the English version shall prevail.