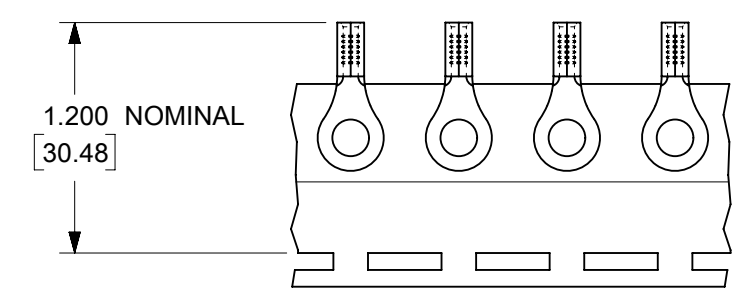
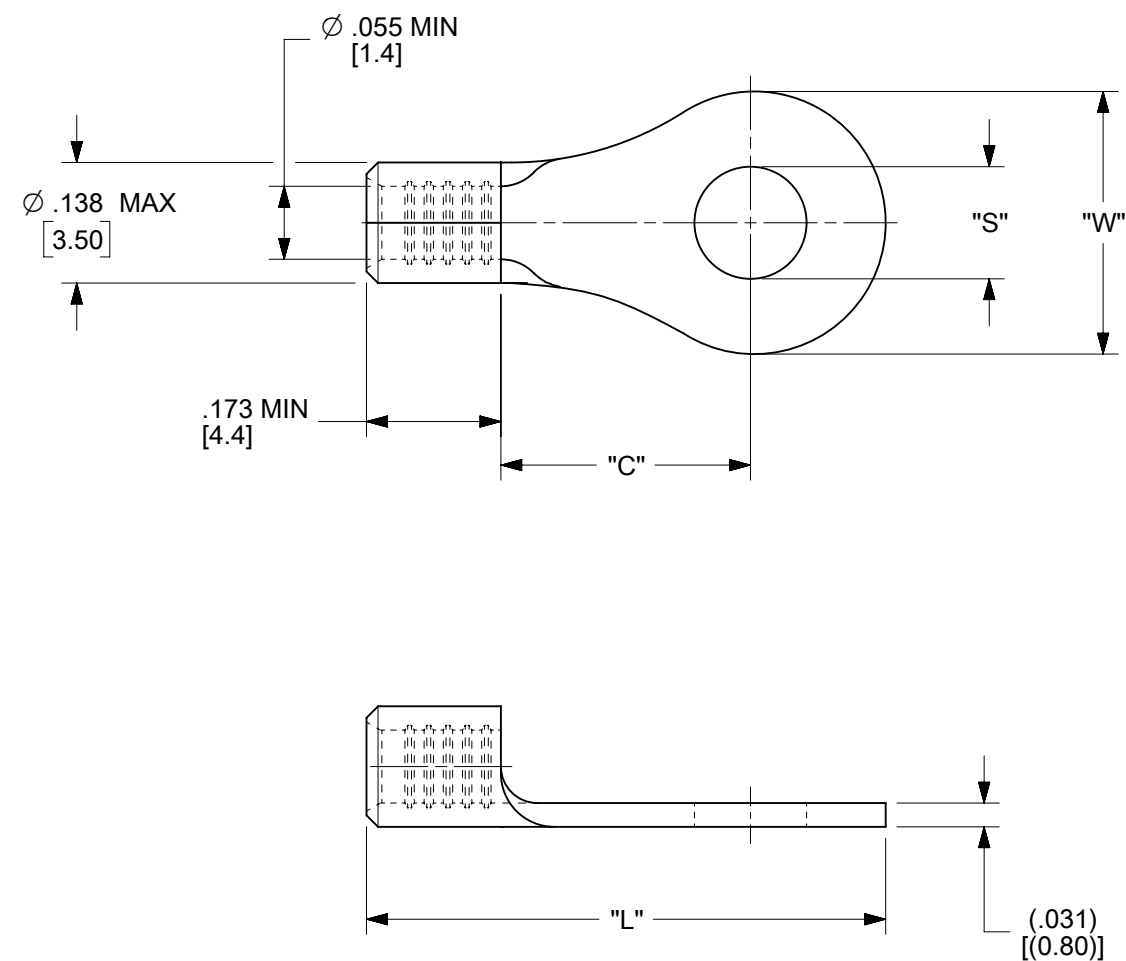


LOOSE PIECE		TAPE MOUNTED		STUD SIZE	DIMENSIONS			
MATERIAL NO.	ENG. NO.	MATERIAL NO.	ENG. NO.		"S" ±.007/0.18	"W" MAX	"C" MIN	"L" MAX
192030486	A-S-122-14	192030005	A-S-122-14T	1/4"	.256/6.50	.467/11.86	.427/10.85	.894/22.71
192030483	A-S-132-06	192030011	A-S-132-06T	06	.146/3.71	.270/6.86	.238/6.05	.611/15.52
192030485	A-S-132-08	192030014	A-S-132-08T	08	.169/4.29	.270/6.86	.238/6.05	.611/15.52
192030387	A-S-133-10	192030016	A-S-133-10T	10	.209/5.31	.325/8.26	.270/6.86	.666/16.92



PARTS ON TAPE

- NOTES:
1. MATERIAL: STEEL
 2. WIRE SIZE: 22-18 AWG (0.25-1.5 MM²)
 3. FINISH: NICKEL PLATED WITH OPTIONAL COPPER FLASH UNDERPLATING, IS ALLOWED FOR IMPROVED ADHESION.
 4. PARTS ARE ROHS COMPLIANT.
 5. AMBIENT OPERATING TEMPERATURE UP TO 900 °F (483 °C).

C1

THIS DRAWING CONTAINS INFORMATION THAT IS PROPRIETARY TO MOLEX ELECTRONIC TECHNOLOGIES, LLC AND SHOULD NOT BE USED WITHOUT WRITTEN PERMISSION											
FUNCTIONAL SYMBOLS	DIMENSION UNITS	SCALE	CURRENT REV DESC: REMASTERED IN ECTR AND UPDATED NOTE								
	IN/MM	4:1	<p>molex</p> <p>RING TONGUE TERMINAL, 22-18 AWG, KRIMPTITE, 900 DEG F (483 DEG C)</p> <p>PRODUCT CUSTOMER DRAWING</p>								
GENERAL TOLERANCES (UNLESS SPECIFIED)		EC NO: 708789								2022/05/12	
DIVISIONAL SYMBOLS	4 PLACES ±	MM	INCH	DRWN: PAWANC	2022/06/01		2022/06/02		2022/06/02		
	3 PLACES ±			CHKD: DMYRICK	2022/06/01		2022/06/02		2022/06/02		
	2 PLACES ±			APPR: JMACNEIL	2022/06/01		2022/06/02		2022/06/02		
	1 PLACE ±			INITIAL REVISION:							
0 PLACES ±				DRWN: EHILE	2006/09/22		2006/09/22		2006/09/22		
ANGULAR TOL ± °				APPR: JMACNEIL	2006/09/22		2006/09/22		2006/09/22		
DRAFT WHERE APPLICABLE MUST REMAIN WITHIN DIMENSIONS			THIRD ANGLE PROJECTION	DRAWING	SERIES	MATERIAL NUMBER	CUSTOMER	DOCUMENT NUMBER	DOC TYPE	DOC PART	REVISION
				B-SIZE	19203	SEE CHART	GENERAL MARKET	SD-19203-036	PSD	001	C1
											SHEET NUMBER
											1 OF 1