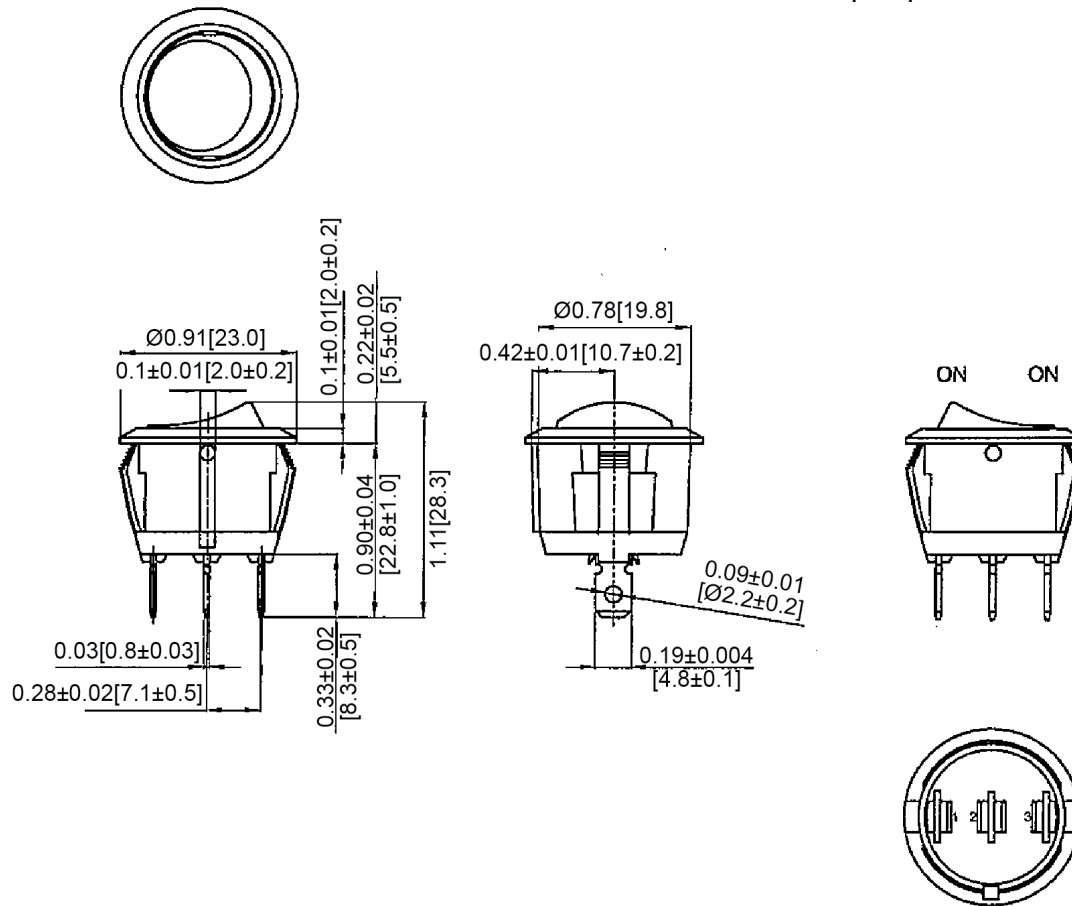
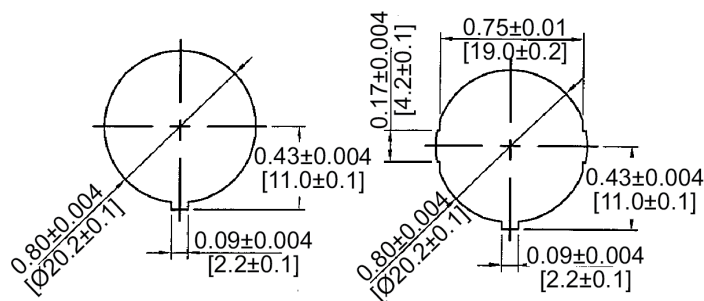


Mechanical Dimensions: Inches [mm]

Tolerances ± 0.012 [0.3] Unless Otherwise Specified

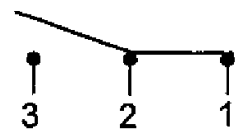
Mounting Hole






Thickness: 0.1~0.12[2.0~3.0] | 0.03~0.12[0.7~3.0]

Circuit Diagram

3P SPDT ON-ON



Electrical Specifications

Rating	20A 14V DC, 10A 28V DC	  
Contact Resistance	50m ohm Max	
Insulation Resistance	DC 500V 100M ohm Min	
Dielectric Strength	AC 1500V 1 minute	
Operation Temperature	-25°C~85°C	

Material Specifications

Frame	Black, Nylon 66
Actuator	Black, Nylon 66
Terminals	Silver Plated, Copper Alloy

Rocker Switch

RA1-1D-DC-2-B



Rev Date of issue Revision Notes

Designed Approved

B	06-08-2021	Initial Drawing	RC	OF
---	------------	-----------------	----	----