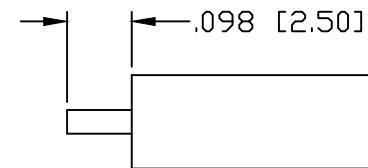
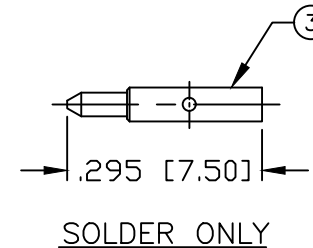
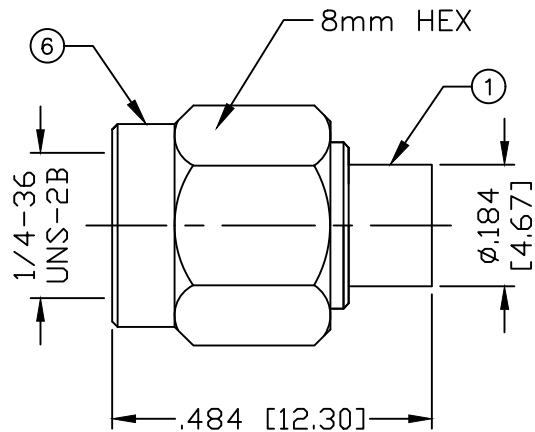


PART NO.

RSA-3500-141-03

REV	DESCRIPTION	DWN	DATE	APPROVED
A	UPDATED DWG DIMS AND FORMAT	CZS	01/15/20	JDMc

RECOMMENDED STRIPPING DIMENSIONSPECIFICATIONS:

IMPEDANCE: 50 Ohms

FREQUENCY RANGE: 0-18 GHz

INSERTION LOSS(dB): $0.03 \times \sqrt{f(\text{GHz})}$

VSWR: 1.3 MAX.

WORKING VOLTAGE: 500 V rms Max. @ Sea Level

INSULATION RESISTANCE: 5000 MΩ

TEMPERATURE RANGE: -65°C TO 85°C

FOR .141 SEMI RIGID, RG-402/U & BELDEN 1673A CABLE

#	DESCRIPTION	QTY	MATERIAL	FINISH
6	COUPLING NUT	1	SST	PASSIVATED
5	RETAINING RING	1	Be.Cu.	NICKEL
4	GASKET	1	SI RUBBER	---
3	PIN	1	BRASS	GOLD
2	INSULATOR	1	PTFE	---
1	BODY	1	BRASS	GOLD

CUSTOMER OUTLINE DRAWING	
ALL DIMENSIONS ARE REFERENCE ONLY	
UNLESS OTHERWISE SPECIFIED: DIMENSIONS ARE IN INCHES AND [MILLIMETERS]	
DRAWN C. ZUÑIGA	01/15/20
CHECKED	
ORJ DRAWN C. ZUÑIGA	05/20/08

**RoHS
COMPLIANT**

PROPRIETARY AND CONFIDENTIAL
THIS DRAWING CONTAINS
INFORMATION PROPRIETARY TO
RF INDUSTRIES. ANY
UNAUTHORIZED USE OF THIS
DRAWING IS EXPRESSLY
PROHIBITED WITHOUT WRITTEN
PERMISSION FROM RF
INDUSTRIES. ANY VIOLATION IS
PUNISHABLE UNDER U.S.
COPYRIGHT LAWS.

RFconnectors
DIVISION OF RF INDUSTRIES, LTD.

RFINDUSTRIES.COM
7610 MIRAMAR RD.
SAN DIEGO, CA 92126
(858) 549-6340
(858) 549-6345 FAX

SMA PLUG DIRECT SOLDER
.141 SEMI RIGID CABLE

CABLE GROUP	DWG #	REVISION
SR2	RSA-3500-141-03	A
FORMAT	SCALE	CONTROL #
A	NTS	1560
		SHEET 1 OF 1