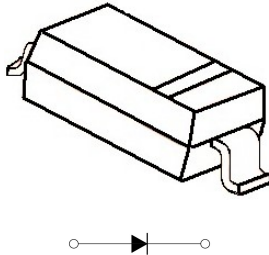




# RB551V-30

## Plastic-Encapsulate Schottky Barrier Diode

### SOD-323



#### 特征 Features

- 大电流承受能力。High Current Capability
- 正向压降低。Low Forward Voltage Drop

#### 机械数据 Mechanical Data

- 封装: SOD-323 封装 SOD-323 Small Outline Plastic Package
- 极性: 色环端为负极 Polarity: Color band denotes cathode end
- 安装位置: 任意 Mounting Position: Any

Marking: D

极限值和温度特性(TA = 25°C 除非另有规定)

**Maximum Ratings & Thermal Characteristics** (Ratings at 25°C ambient temperature unless otherwise specified.)

参数 Parameters	符号 Symbol	RB551V-30	单位 Unit
峰值反向电压 Peak reverse voltage	VRM	30	V
直流反向电压 DC reverse voltage	VR	21	V
整流电流 Mean rectifying current	Io	0.5	A
峰值正向浪涌电流 Peak forward surge current 8.3 ms single half sine-wave	IFSM	2.0	A
典型热阻 Typical thermal resistance	RθJA	400	°C/W
功率消耗 Power Dissipation	PD	250	mW
存储温度 Storage temperature range	TSTG	-50-+150	°C

电特性 (TA = 25°C 除非另有规定)

**Electrical Characteristics** (Ratings at 25°C ambient temperature unless otherwise specified).

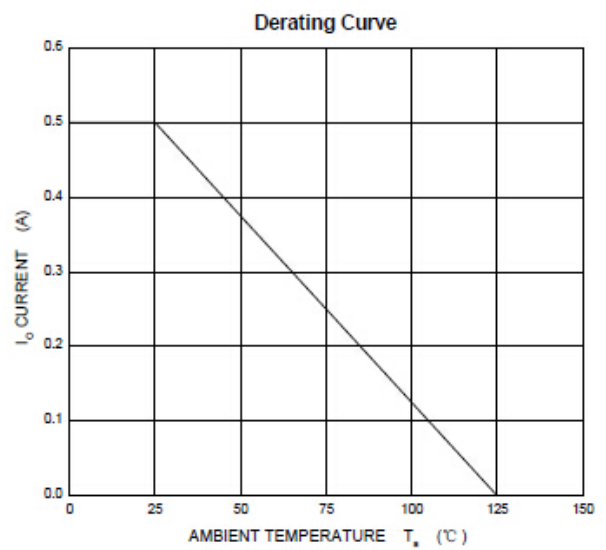
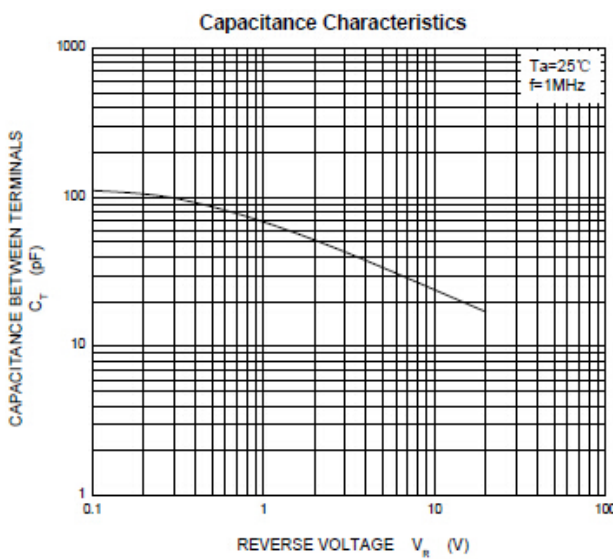
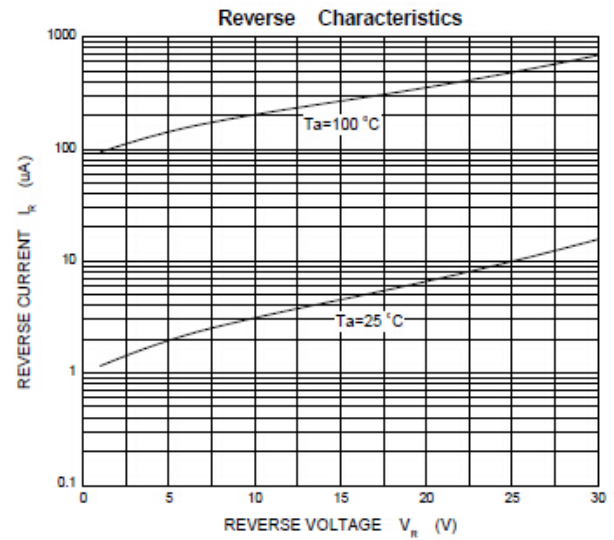
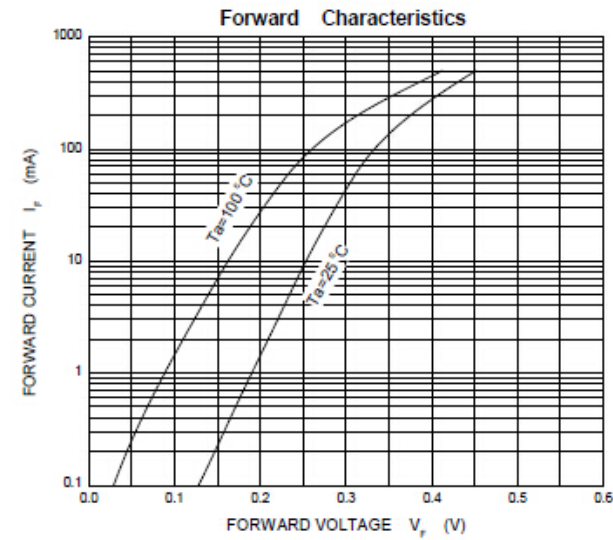
参数 Parameters	符号 Symbol	测试条件 Test conditions	RB551V-30	单位 Unit
最大正向电压 Maximum forward voltage	VF	IF = 0.1A IF = 0.5A	0.360 0.540	V
最大反向电压 Maximum reverse breakdown voltage	VR	IR=1mA	30	V
最大反向电流 Maximum reverse current	IR	VR=20V	100	uA



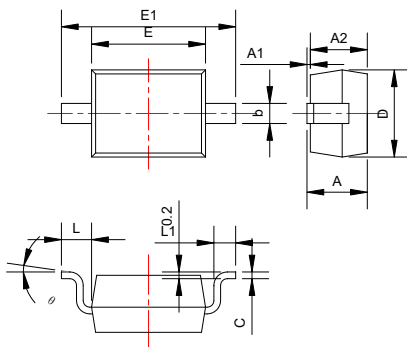
# RB551V-30

## Plastic-Encapsulate Schottky Barrier Diode

### Characteristic Curves



### SOD-323 PACKAGE OUTLINE Plastic surface mounted package



SYMBOL	DIMENSIONS	
	MIN.	MAX.
A		1.000
A1	0.000	0.100
A2	0.800	0.900
b	0.250	0.350
c	0.080	0.150
D	1.200	1.400
E	1.600	1.800
E1	2.500	2.700
L	0.475REF	
L1	0.250	0.400
$\theta$	0°	8°