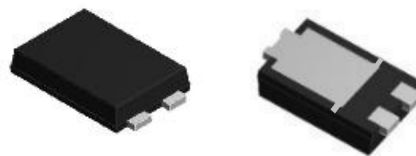


SPL1060

Low VF Schottky Rectifiers

FEATURES

- Planar MOS Schottky barrier diodes
- Low forward voltage drop
- low profile - typical body height 1.1 mm
- Moisture sensitivity: level 1, per J-STD-020
- High temperature soldering guaranteed: 260°C/10 seconds
- RoHS Compliant
- Halogen-free according to IEC 61249-2-21 definition



MECHANICAL DATA

- Case: TO-277
- Case Material: Molding compound meets UL 94V-0 flammability rating



Typical Application

General purpose use in ac-to dc bridge full wave rectification for SMPS, lighting, Adapter, charger, home appliance, office equipment and telecommunication

Maximum Ratings

Ta=25°C unless otherwise noted

Parameter	Symbol	Value	Unit
Repetitive Peak Reverse Voltage	V_{RRM}	60	V
Average Forward Rectified Current	$I_{F(AV)}$	10	A
Peak forward surge current (8.3 ms single half sine-wave superimposed on rated load)	I_{FSM}	250	A
Operating Junction Temperature	T_j	150	°C
Storage Temperature Range	T_{stg}	-55 to +150	°C

Electrical Characteristics

Ta=25°C unless otherwise noted

Parameter	Test Conditions	Symbol	Value		Unit
			Typ.	Max.	
Forward Voltage@ $I_f=2A$	Ta=25°C	V_F	0.35	0.37	V
	Ta=125°C		0.23	0.25	
Forward Voltage@ $I_f=10A$	Ta=25°C		0.48	0.51	
	Ta=125°C		0.42	0.45	
Reverse Current @ V_{RRM}	Ta=25°C	I_R	120	150	uA
	Ta=125°C		80	100	mA
Typical junction capacitance	4.0 V, 1 MHz	C_j	540		pF
Typical thermal resistance	junction to ambient	$R_{\theta JA}$	27		°C/W
	junction to lead	$R_{\theta JL}$	1		

RATINGS AND CHARACTERISTICS CURVES

FIG. 1: Forward Output Current Derating Curve

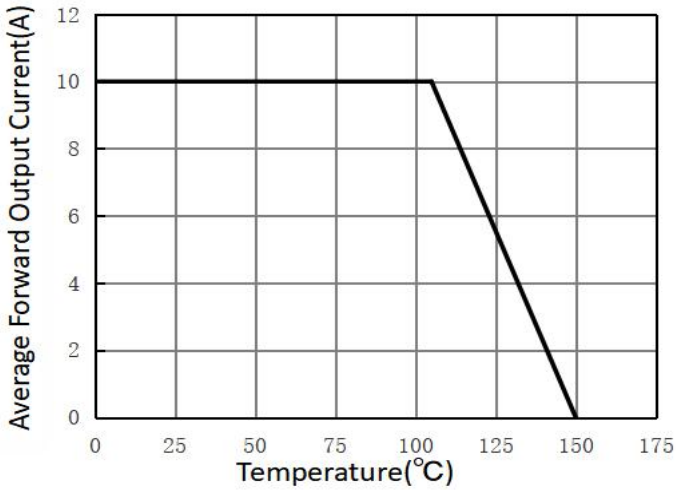


FIG.2: Maximum Non-Repetitive Peak Forward Surge Current

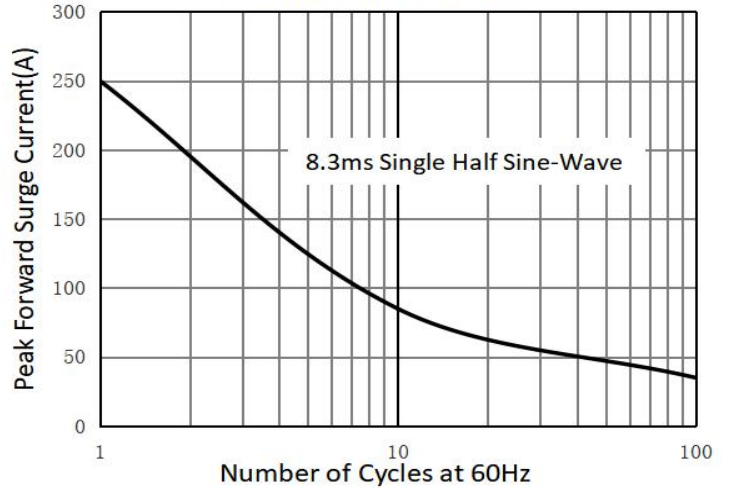


FIG.3: Typical Instantaneous Forward Characteristics

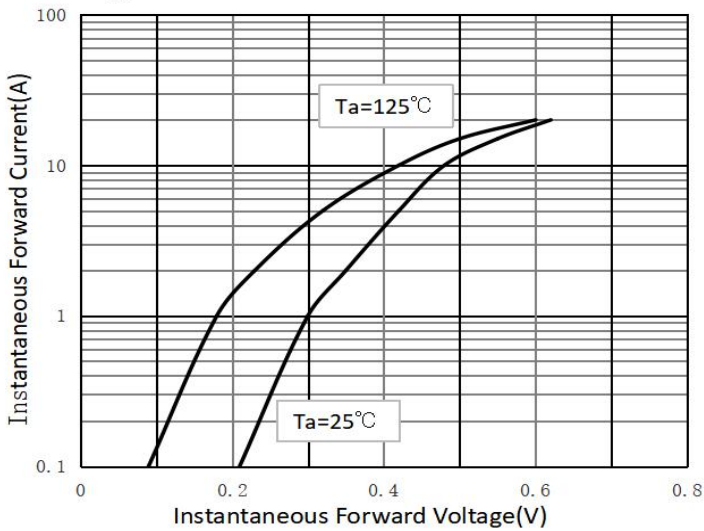
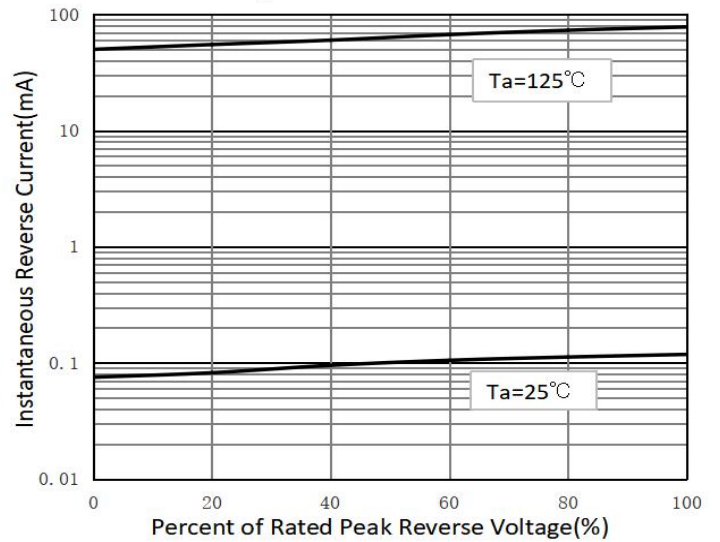
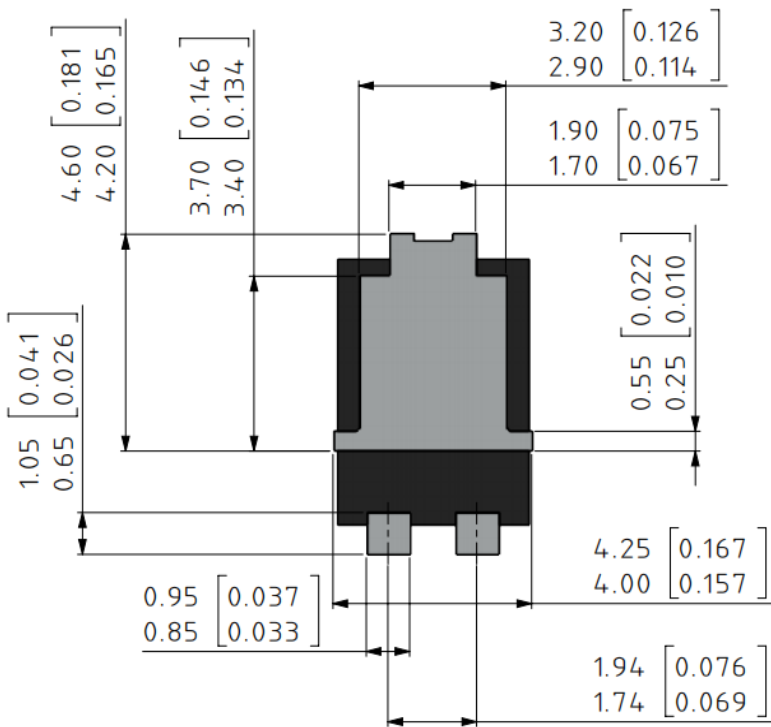
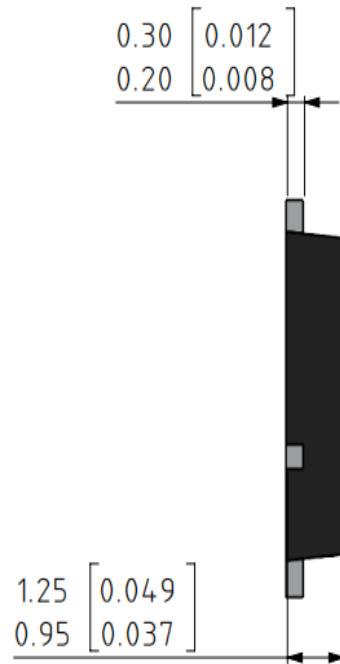
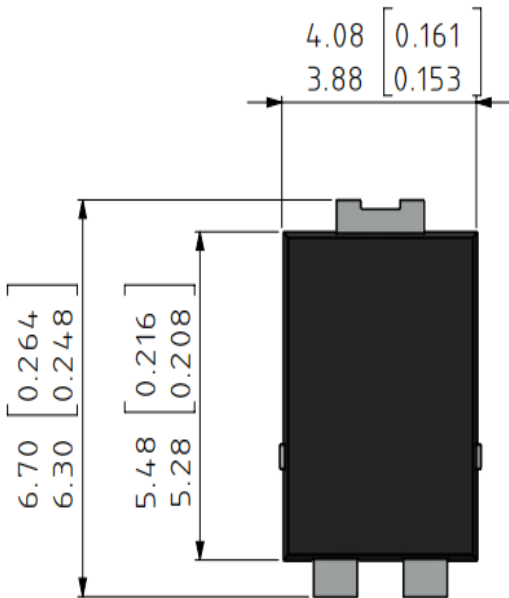


FIG.4: Typical Reverse Characteristics



SPL1060

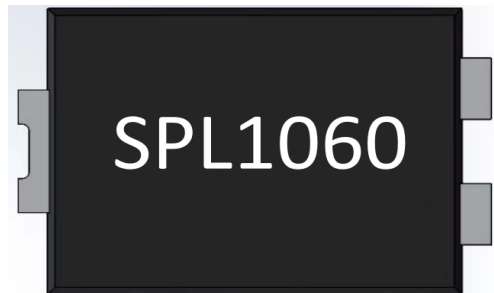
PACKAGE OUTLINE DIMENSIONS



SPL1060

PACKING INFORMATION

Package	Reel(PCS)	Inner Box(PCS)	Carton(PCS)	Tape Width(mm)	Reel Diameter(inch)
TO-277B	5K	10K	80K	12	13

Marking

The SINO-IC logo is a registered trademark of ShangHai Sino-IC Microelectronics Co., Ltd.

© 2005 SINO-IC – Printed in China – All rights reserved.

SHANGHAI SINO-IC MICROELECTRONICS CO., LTD

Add: Building 3, Room 3401-03, No.200 Zhangheng Road, ZhangJiang Hi-Tech Park, Pudong, Shanghai 201203, China

Phone: +86-21-33932402 33932403 33932405 33933508 33933608

Fax: +86-21-33932401

Email: szrxw002@126.com

Website: <http://www.sino-ic.net>