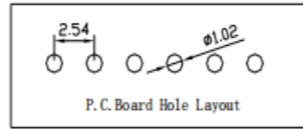
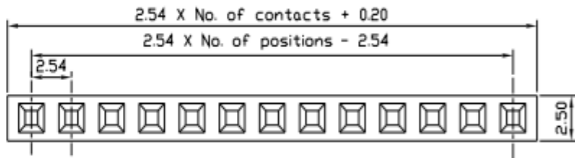
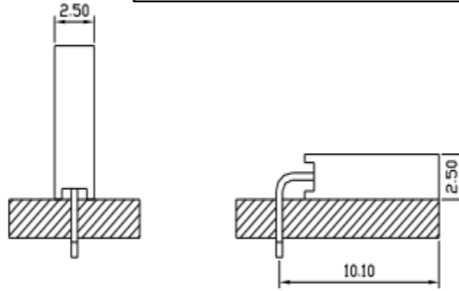
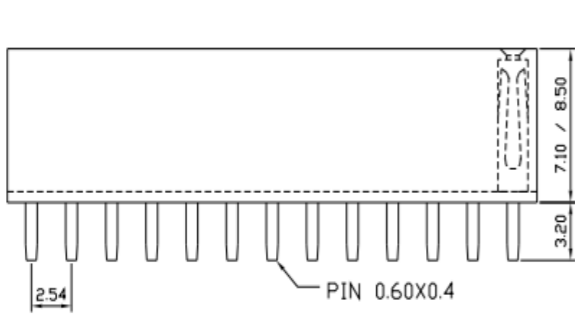


Engineer Drawing

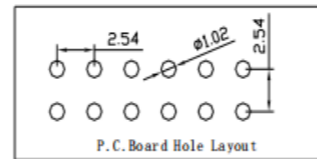
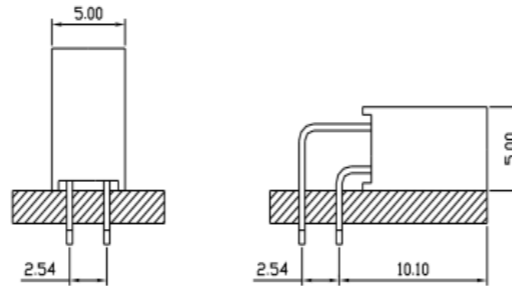
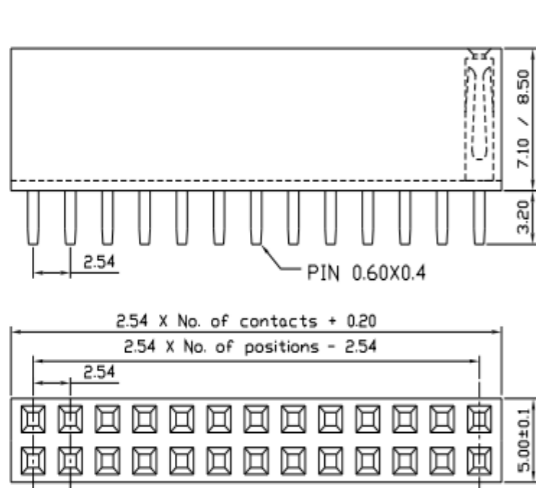
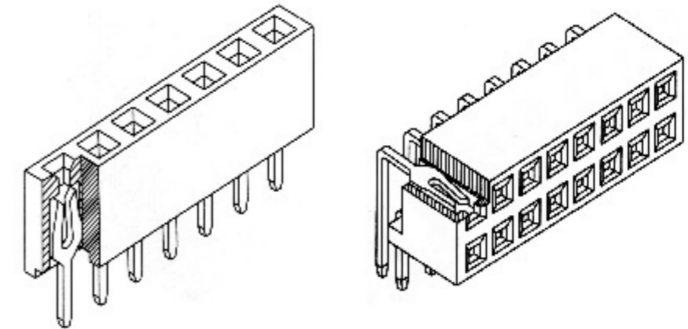


SPECIFICATIONS:

Current Rating: 3.0 AMP
 Contact Resistance: 30m Ω Max
 Insulation Resistance: 1000M Ω Min
 Withstand Voltage: 600VAC/minute
 Operation Temperature: -40°C to +105°C

MATERIALS:

Contact Material: Copper Alloy
 Contact Plating: Gold or Tin over 50 μ Ni
 Insulator: Glass Filled Polyester(UL94V-0)
 Standard: PBT



IPCP 256 * * * * * * * *

① ② ③ ④ ⑤ ⑥ ⑦ ⑧

- ① Series Type
- ② Pitch
- ③ Connector Code
- ④ Pin Code
- ⑤ Internal Code
- ⑥ Appereace Code
- ⑦ Serial Code
- ⑧ Other Code

		www.i-ncp.com	
PART NO IPCP256Fxx		NAME: HEADER FEMALE 2PIN 180° 90°	
DRAWING NO IPCP256F 07			
	SHEET 1 OF 1	UNITS:mm	SCALE:1:1
			REV.01