

Engineer Drawing

NOTES:

MATERIAL:

1: HOUSING: THERMO-PLASTIC. UL 94V-0 NATURE
 2: CONTACT: PHOSPHOR BRONZE
 CONTACT: SEE ORDER INFORMATION;

SOLDER: GOLD FLASH

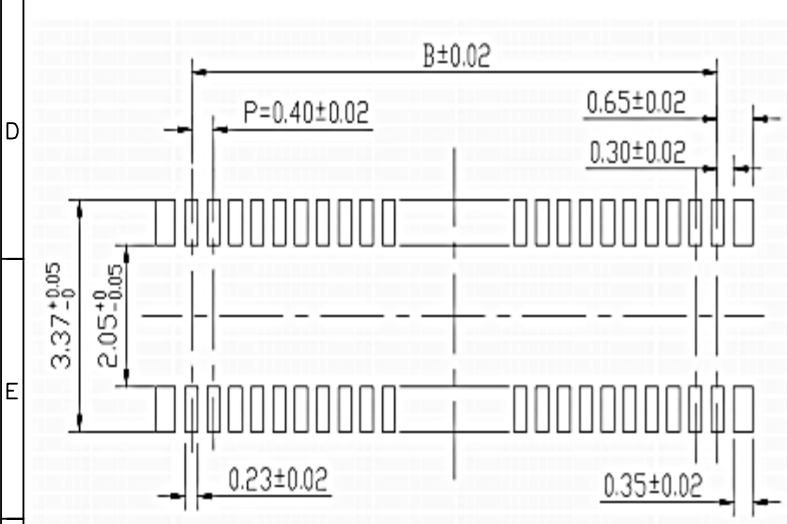
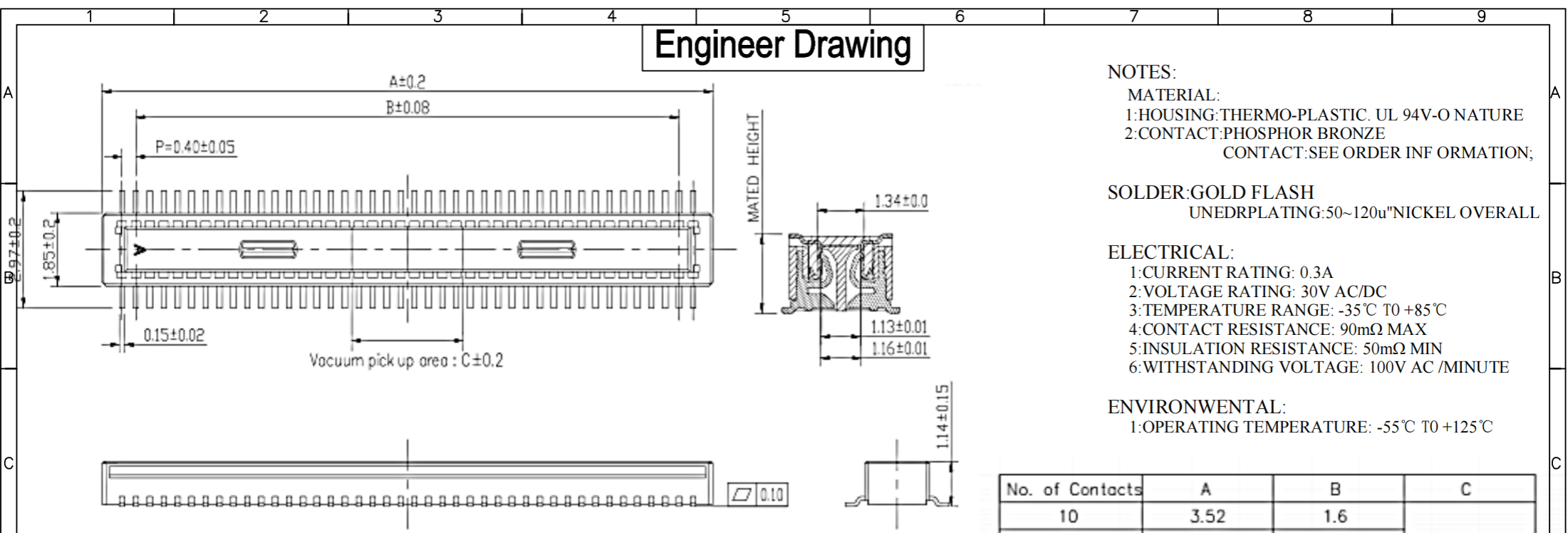
UNEDR PLATING: 50~120u" NICKEL OVERALL

ELECTRICAL:

1: CURRENT RATING: 0.3A
 2: VOLTAGE RATING: 30V AC/DC
 3: TEMPERATURE RANGE: -35°C TO +85°C
 4: CONTACT RESISTANCE: 90mΩ MAX
 5: INSULATION RESISTANCE: 50mΩ MIN
 6: WITHSTANDING VOLTAGE: 100V AC / MINUTE

ENVIRONMENTAL:

1: OPERATING TEMPERATURE: -55°C TO +125°C



IPC B 04 * * * * * * * *

① ② ③ ④ ⑤ ⑥ ⑦ ⑧

- ① Series Type
- ② Pitch
- ③ Height
- ④ Serial Code
- ⑤ Connector Type
- ⑥ Pin Code
- ⑦ Internal Code
- ⑧ Other Code

No. of Contacts	A	B	C
10	3.52	1.6	1.0
12	3.92	2.0	
20	5.52	3.6	
24	6.32	4.4	1.2
30	7.52	5.6	1.5
34	8.32	6.4	2.3
40	9.52	7.6	3.2
44	10.32	8.4	
50	11.52	9.6	
60	13.52	11.6	
70	15.52	13.6	
80	17.52	15.6	
90	19.52	17.6	
100	21.52	19.6	

Recommended PC board pattern
(TOP VIEW)

GENERAL TOLERANCE

.X : ± 0.35
 .XX : ± 0.25
 .XXX : ± 0.10
 ANGLES : $\pm 1^\circ$



www.i-ncp.com

PART NO:
 IPCB04xx1M xx
 DRAWING NO
 IPCB0400 07

NAME
 Pitch 0.40mm BTB MALE



SHEET 1 OF 1

UNITS: mm

SCALE: 1:1

REV. 01