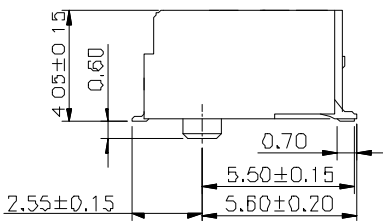
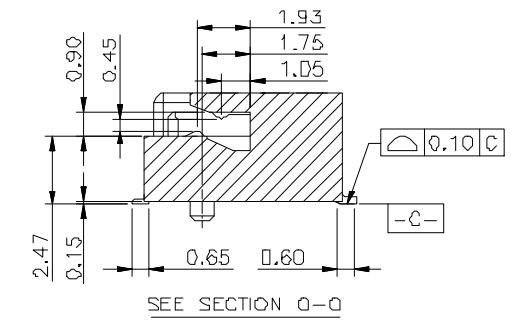


REV.	EGRN NO./DESCRIPTION	DATE	DRAWN	CHECKED	APPROVE
1	SN14165	11/15/14	Lxh	Vito	Barney
1A	SN15***	03/28/15	Jinjin.Tu	Vito	Barney
1B	SN16***	03/22/16	Jinjin.Tu	Vito	Barney




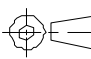
GENERAL TOLERANCES UNLESS SPECIFIED		PART NO.	 Lian Xin Technology
X±0.25	X*±3°	SEE TABLE	
XX±0.25	X*±2°	APPROVED BY	TITLE
XXX±0.15	XX*±1°	Barney	0.5 PITCH M.2 H4.2 (KEY B)
CUSTOMER DRAWING		CHECKED BY	DWG NO.
		Vito	AP-APCI0105
SIZE	UNITS	DRAWN BY	
A4	MM [INCH]	Lxh	SHEET
			SCALE
			REV
			1 / 5
			4:1
			1B

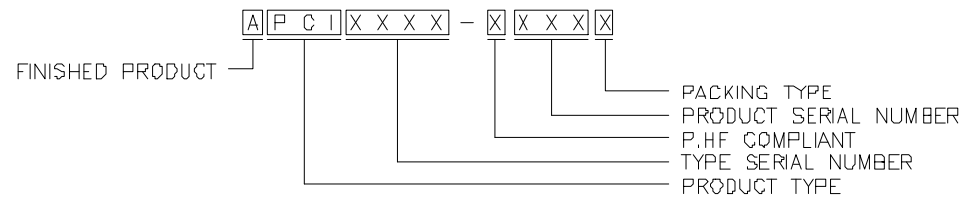
TABLE:


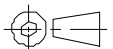
NO.	PART NO.	DESCRIPTION	DURABILITY
1	APCI0105-P001A	GOLD G/F ON CONTACT AREA	25 CYCLES
		GOLD G/F ON SOLDER AREA	
2	APCI0105-P002A	GOLD 10 μ ON CONTACT AREA	25 CYCLES
		GOLD G/F ON SOLDER AREA	
3	APCI0105-P003A	GOLD 15 μ ON CONTACT AREA	25 CYCLES
		GOLD G/F ON SOLDER AREA	
4	APCI0105-P004A	GOLD 30 μ ON CONTACT AREA	60 CYCLES
		GOLD G/F ON SOLDER AREA	

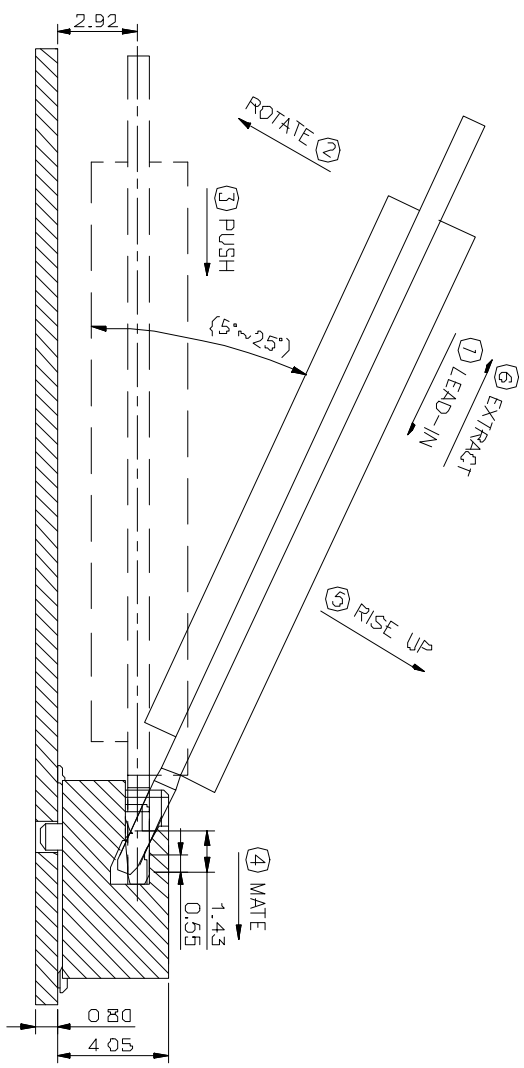
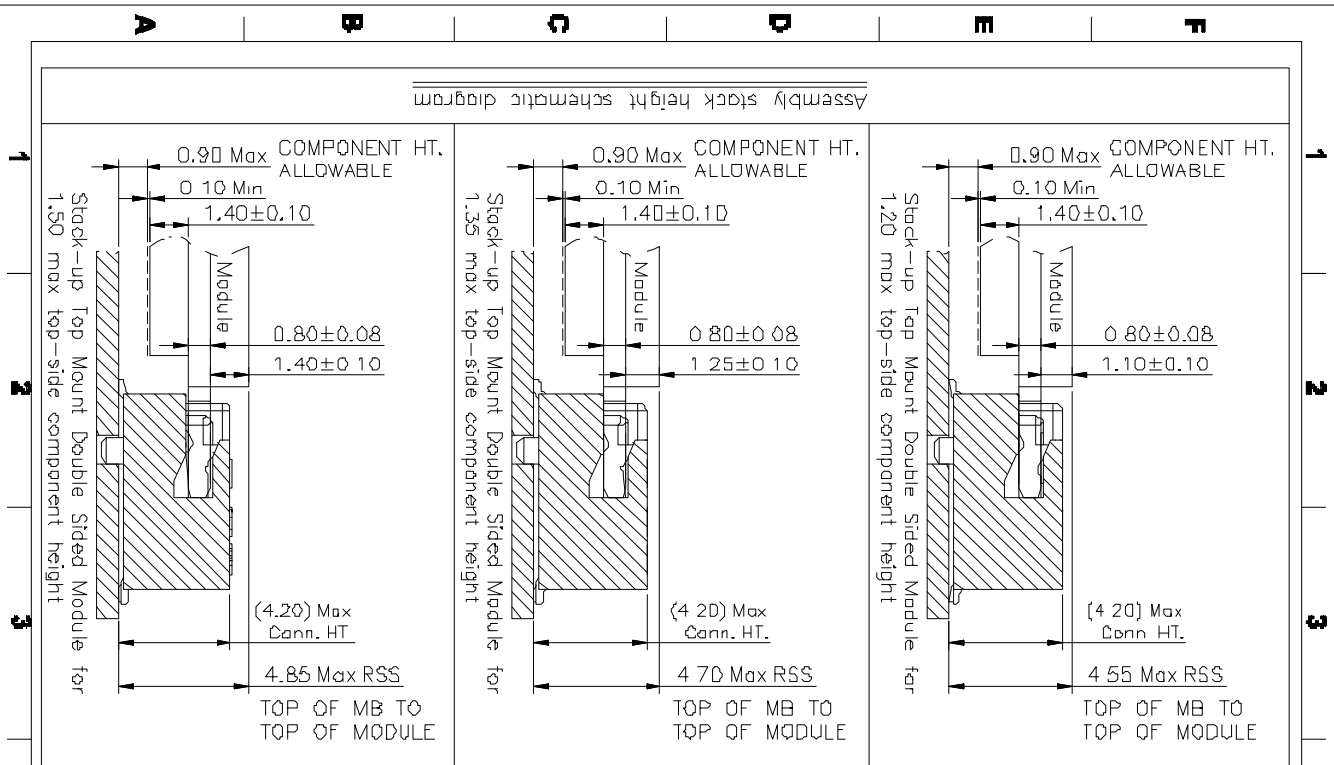
Notes:

- MATERIAL SPECIFICATION:
 - HOUSING:LCP+40%GF,UL94V-0,COLOR:BLACK.
 - CONTACT:COPPER ALLOY C1065.
 - PEG:STEEL.
- PLATING SPECIFICATION:
 - CONTACT:50 μ MIN,NICKEL UNDER PLATING OVER ALL,PLATING ON SOLDER AREA:SEE TABLE GOLD PLATING ON CONTACT AREA:SEE TABLE
 - PEG:50 μ MIN, NICKEL UNDER PLATING OVER ALL, 80 μ MIN. MATTE TIN PLATING ON SOLDER AREA.
- HF COMPLIANT, RoHS COMPLIANT
- DATE CODE: XX XX XX
 DAY
 WEEK
 YEAR
- MECHANICAL PERFORMANCE:
 - DURABILITY: SEE TABLE
- ELECTRICAL PERFORMANCE:
 - CURRENT: 0.5A PER PIN
 - LLCR: INITIAL 55m Ω MAX ;FINAL Δ LLCR=20m Ω MAX
- IR REFLOW:

THE TEMPERATURE SHALL BE 260 \pm 5 $^{\circ}$ C MAINTAINING 10 \pm 1 SECONDS.
- PRODUCT NUMBER NOTE:



GENERAL TOLERANCES UNLESS SPECIFIED		PART NO.				
X \pm 0.25	X \pm 3 $^{\circ}$	SEE TABLE	TITLE			
XX \pm 0.25	XX \pm 2 $^{\circ}$	APPROVED BY	0.5 PITCH M.2 H4.2 (KEY B)			
XXX \pm 0.15	XXX \pm 1 $^{\circ}$	Bamey	DWG NO.			
CUSTOMER DRAWING	CHECKED BY	Vito	AP-APCI010G			
SIZE	UNITS	DRAWN BY		SHEET	SCALE	REV
A4	MM [INCH]	Ljh		2 / 5	4:1	1B

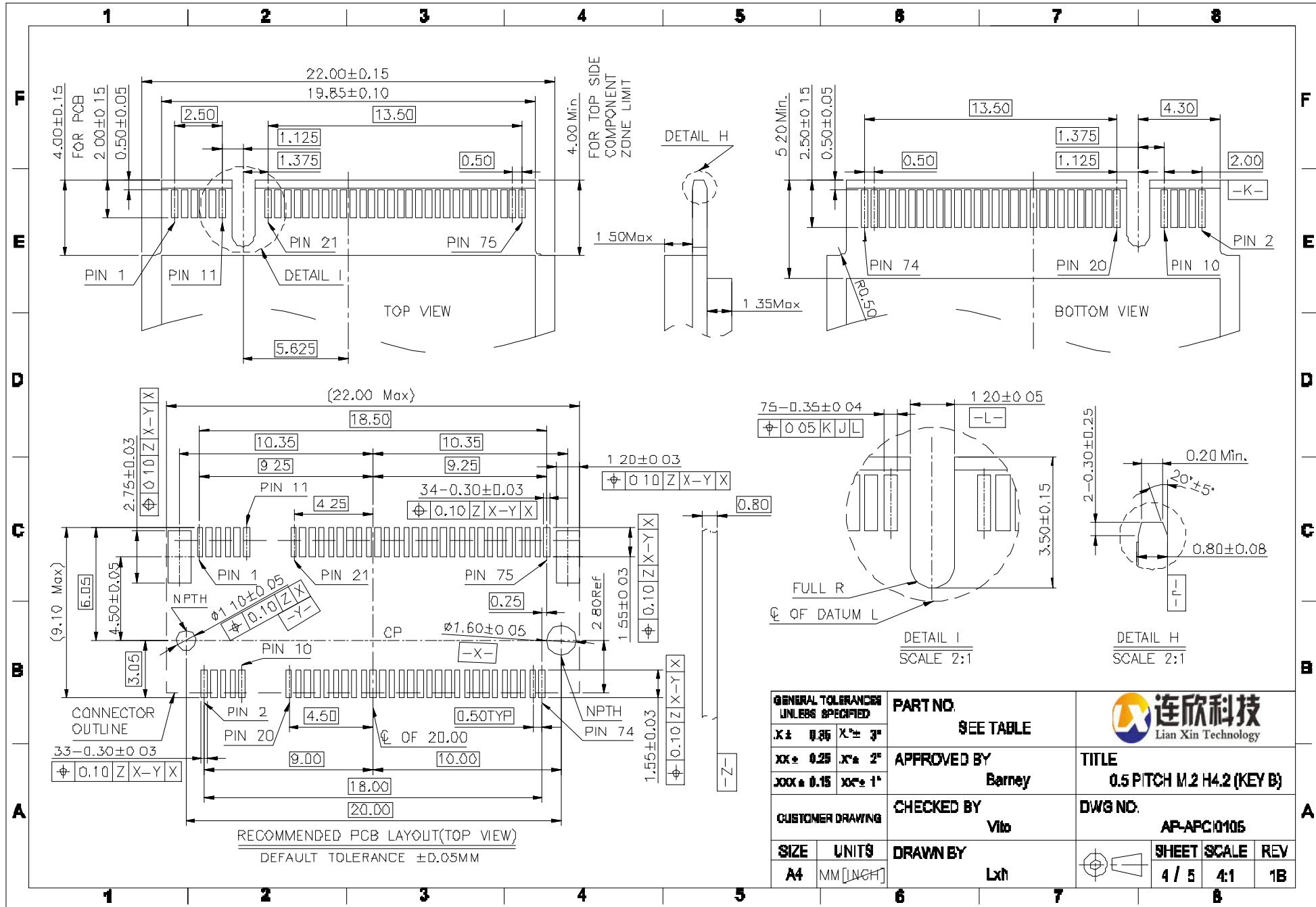


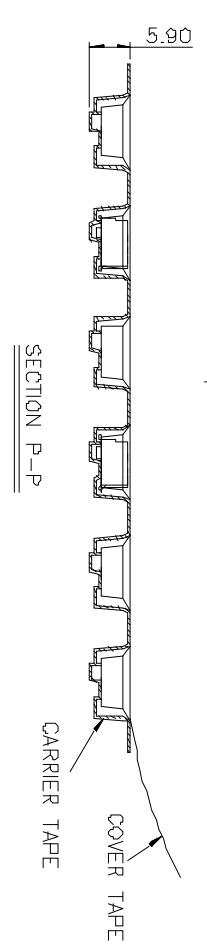
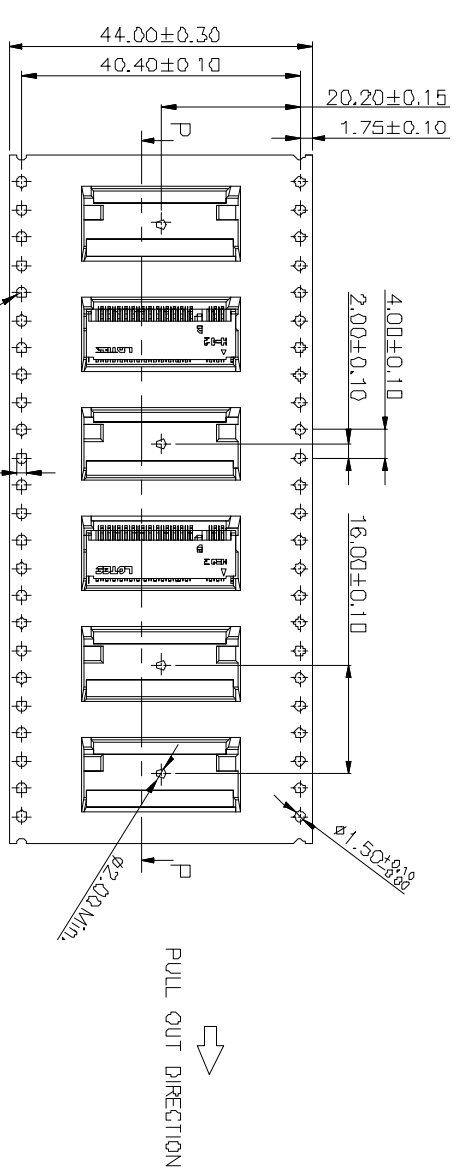
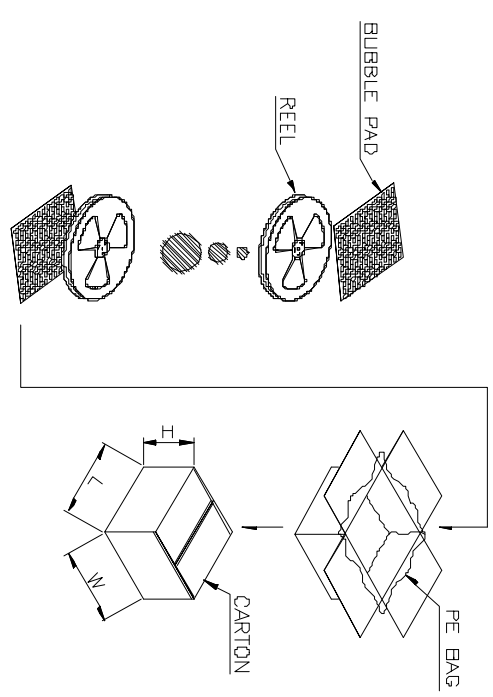
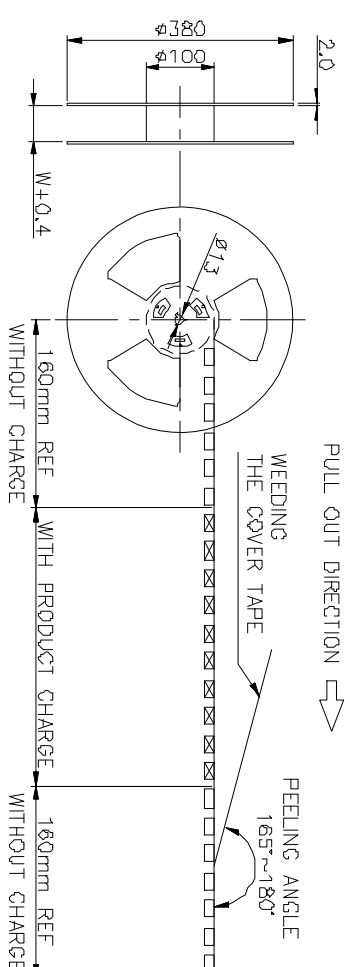
NOTE: Mating force will generate from step 3 to step 4.

HOW TO MATE AND EXTRACT
MATE: ① → ④
EXTRACT: ⑤ → ⑦

GENERAL TOLERANCES UNLESS SPECIFIED		PART NO.		SEE TABLE		TITLE	
X ± 0.36	X ± 0.36	X ± 0.36	X ± 0.36	APPROVED BY		4.5 PITCH M2 H4.2 (KEY B)	
X ± 0.28	X ± 0.28	X ± 0.28	X ± 0.28	Banyu		DWG NO.	
X ± 0.15	X ± 0.15	X ± 0.15	X ± 0.15	CHECKED BY		AP-APC10106	
CUSTOMER DRAWING				DRAWN BY		SHEET SCALE	
A4				LXH		3 / 5 4:1	
MM [DEF7]				REV		19	







GENERAL TOLERANCES UNLESS SPECIFIED		PART NO.		SEE TABLE	
X±	0.30	X/2	0'		
Xx±	0.25	X/4	2'	APPROVED BY	
X00±	0.15	X/4 ± 1°		Barney	
CUSTOMER DRAWING		CHECKED BY		Viljo	
SIZE	UNITS	DRAWN BY		Lxh	
A4	MM [INCH]				
TITLE		DWG NO.		AP-APC10705	
0.5 PITCH M2H4.2 (KEY B)					
SHEET SCALE		REV		1B	
5 / 6		1:1			

900 5400
 PCS/REEL PCS/CARTON

连欣科技
 Lian Xin Technology