

Ø31.5

Key Protrusion x 3

Cover Gasket

93±.3

Ø30

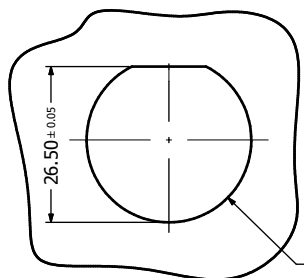
27.5±0.6

21

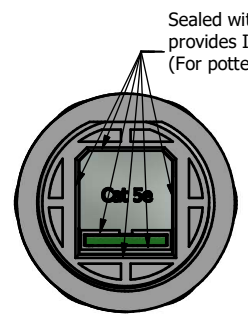
Protective Cover
(Plastic, color black
Bayonet Locking Type)

Tether

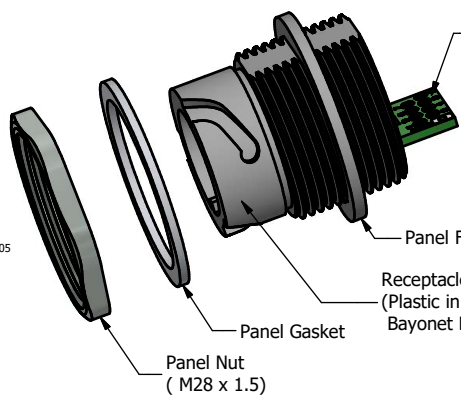
0.5



Recommended Panel Cutout



Sealed with Sealing Compound,
provides IP67 even when uncovered
(For potted version only)



Panel Nut
(M28 x 1.5)

Receptacle Housing
(Plastic in different Colors
Bayonet Locking Style)

3.5

2.0

19.4

29.7

Shielded Cat.5e
RJ45 PCB Jack
with Metal Shell
Grounding accepts
both Solid and
Stranded
AWG 24 to 26 Wires

Grounding
Connection

39.75

Bayonet
Channel x 3

Ø34

32

max. 35

Notes:

- Electrical Specifications:
 - Meets EIA/TIA-568-B.2 Cat.5e Specification
 - Contact Resistance: 20mOhm max.
 - Insulation Resistance: 500MOhm min. @ 100 VDC
 - Current Rating: 1.2A max. at 25°C
 - Working Voltage: 100 VDC
 - DWV: 1000 VDC/60s Contact to Contact, 1500 VDC/60s Contact to Metal Shell
 - Operating Temperature: -40°C to +85°C
- Material and Finish:
 - Receptacle Housing & Protective Cover: Polyester (Color: See Part Number Table); UL94 V-0
 - Panel Nut: Brass, Finish: Nickel Plated
 - Panel Gasket: Silicon, Color: White
 - Cover Gasket: Silicon, Color: White
 - Tether: Polycarbonate, Color: Black
 - Cat.5e RJ45 PCB Jack Metal Shell: Copper Alloy, Nickel Plated
 - Cat.5e RJ45 PCB Jack Plastic Housing: Glass filled PBT UL94 V-0, Color: Black
 - Cat.5e RJ45 PCB Jack Contacts: Phosphor Bronze, Finish: 50u" Gold min. over Nickel
- Connector can be front or rear mounted to a maximum panel thickness of 3.2mm.
- IP67 rated when covered or fully mated with the appropriate mating connector
- Recommended Mounting Panel Nut torque is 20 to 25 lb-inch

Description	Colored Plastic Receptacle Housing with Shielded Cat.5e RJ45 PCB Jack with Grounding Hole and the Black Plastic Protective Cover Assembly					
Plastic Receptacle Housing Color	Black	Blue	Green	Yellow	Red	White
Unpotted Version Part Number	17-110754	17-110764	17-110774	17-110784	17-110794	17-110804
Potted Version Part Number	17-110814	17-110824	17-110834	17-110844	17-110854	17-110864

RoHS compliant

THIS DRAWING MAY NOT BE COPIED OR REPRODUCED IN ANY MANNER WITHOUT THE WRITTEN PERMISSION OF CONEC CORPORATION OWNERSHIP AND COPYRIGHT © CONEC CORPORATION	Customer:			Tolerance Unless otherwise specified 0 PLC ±0.50 1 PLC ±0.38 2 PLC ±0.25 3 PLC ±0.10 ANGLES ±.3°		Scale:	Dim. in mm
	Name	Title	Approval Date			Material: See Notes	
	2012 Date Name Draw. Nov. 19 Vincent Ke Appd. Nov. 19 J. Chaudry Norm D-old			Receptacle + Cover Assembly Kit with Colored Plastic Receptacle Housing + Shielded Cat. 5e RJ45 PCB Jack Version-II			
	1 x b	A21-04.26	03.11.2021	Bub	Drawing No.: 17K1A373		DIN A3
a	original			Part No.: SEE PART NUMBER TABLE		Sheet 1/1	
Rev	Changes	Date	Name				