


SIGN	DATE	DESCRIPTION	APPROVER
△	10/14/08	將Body底部方槽改為φ3.0圓孔形	kind
△	09.4.13	Current, wire range, approval are changed	JODY
△	12/08/09	Dimension is changed from 5.0mm to 4.8mm	Aaron
△	10/27/12	Change the dimensional tolerance	Jacky
△	10/27/12	Change the screw plating specification	Jacky

THIS IS CAD DRAWING, DO NOT REVISE MANUALLY!!!

MATERIALS ELECTRICAL

RATED VOLTAGE & CURRENT:	300 V, 30A △
WITHSTAND VOLTAGE:	AC 2000 V/Min
INSULATION RESISTANCE:	1000 MΩ OR MORE AT DC 500 V
OPERATING TEMPERATURE RANG:	-40 °C ~ +115 °C
SCREW TORQUE VALUE:	8.8 Lb-In.
WIRE RANGE:	10-22AWG △
1) MOLDED PARTS:	Thermoplastic, UL 94 V-0 BLACK
2) TERMINAL:	BRASS, 0.8t, Tin PLATED
△ 3) TERMINAL SCREWS:	STEEL, M3.5

△ APPROVAL: 

PART NO.:  
Critical dimension: ▽

YK 511 xx 0 x x 00G

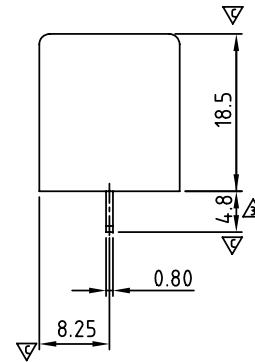
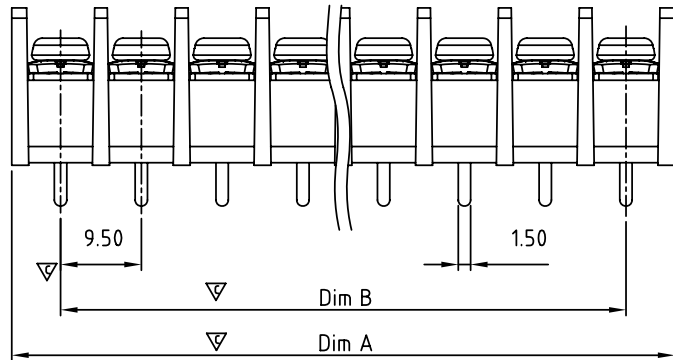
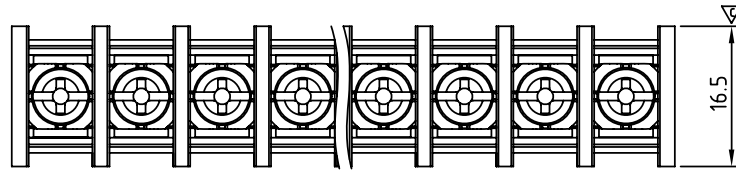
NO. OF POLES  
02: 2 POLES  
03: 3 POLES  
04: 4 POLES  
:  
30: 30 POLES

G: RoHS compliant (lead < 4%)  
in copper alloy

MARK  
0: "@ " MARK  
1: "ANY " MARK

TERMINAL & SCREW PLATED

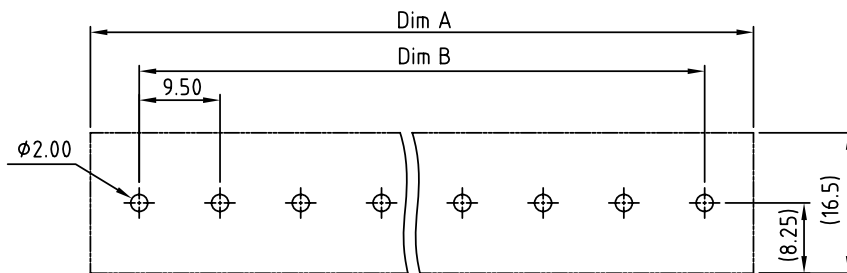
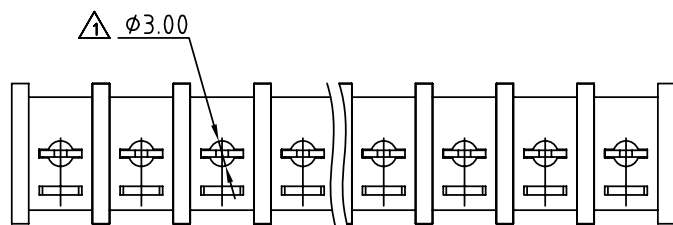
0: TERMINAL & SCREW: G/F  
△ 1: TERMINAL: G/F, SCREW: Zinc  
2: TERMINAL: Sn, SCREW: G/F  
△ 3: TERMINAL: Sn, SCREW: Zinc



N=Number of contacts  
Dimension A & B

DIM A	$N \times 9.5 + 2.0$
DIM B	$(N - 1) \times 9.5$

Dimension A & B	Tolerance
>6 ~ 30	±0.30
>30 ~ 120	±0.40
>120 ~ 400	±0.60

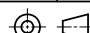


PCB Layout

**ANYTEK**

**CUSTOMER COPY**

ALL RIGHTS RESERVED. REPRODUCTION OR ISSUE TO THIRD PARTIES IN ANY FORM WHATSOEVER IS NOT PERMITTED WITHOUT WRITTEN AUTHORITY FROM THE PROPRIETOR. PROPERTY OF ANYTEK TECHNOLOGY CO., LTD

TITLE		YK-511 W/O Flange Series				
PART NO.		YK511xx0xx00G		DWG NO.	8YK0001-511	
APPROVED	CHECKED	DESIGNED	DRAWN	CUST NO.		Tolerance
		Jacky	Jacky			X. ±0.50
		2012.10.27	2012.10.27			X.X ±0.30
					UNIT: mm	X.XX ±0.10
					SCALE: NONE	X° ±1°
				SHEET: 01/01	REV.: H	