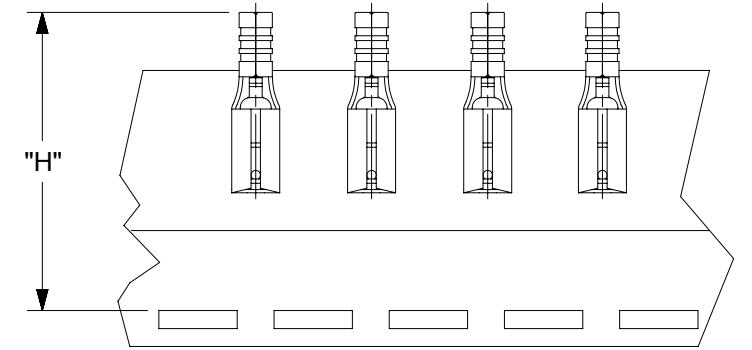
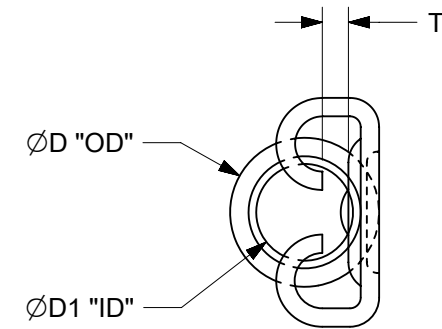
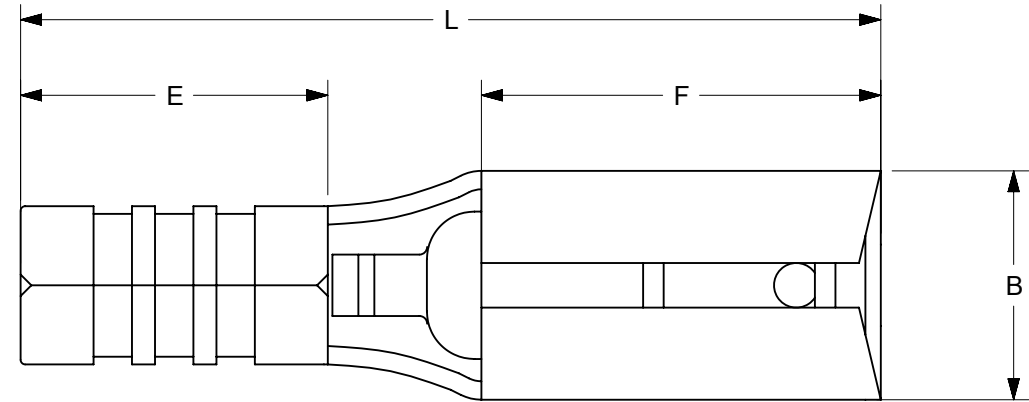


| MATERIAL NUMBER | ENGINEERING NUMBER | WIRE RANGE AWG | TAPED MATERIAL NUMBER | TAPED ENGINEERING NUMBER | T MAX    | B MAX     | F MIN     | L MAX      | E MIN     | D1 MIN    | D MAX     | H NOMINAL   |
|-----------------|--------------------|----------------|-----------------------|--------------------------|----------|-----------|-----------|------------|-----------|-----------|-----------|-------------|
| 192030373       | 192030373          | 16-14          | 192030467             | 19203-0467               | .030/.75 | .239/6.06 | .252/6.40 | .587/14.92 | .173/4.40 | .083/2.10 | .138/3.50 | 1.184/30.07 |
| 192030390       | 192030390          | 16-14          | 192030469             | 19203-0469               | .030/.75 | .302/7.66 | .307/7.80 | .666/16.92 | .173/4.40 | .083/2.10 | .138/3.50 | 1.184/30.07 |
| 192030379       | 192030379          | 12-10          | 192030468             | 19203-0468               | .030/.75 | .302/7.66 | .307/7.80 | .706/17.92 | .213/5.40 | .130/3.30 | .185/4.70 | 1.235/31.37 |

(B1)



TAPE MOUNTING LOCATION

NOTES:

1. MATERIAL: STEEL .016/0.40 THICK REF.
2. FINISH: NICKEL PLATED WITH OPTIONAL COPPER FLASH UNDERPLATING, IS ALLOWED FOR IMPROVED ADHESION.
3. PART IS ROHS COMPLIANT.
4. AMBIENT OPERATING TEMPERATURE UP TO 900 °F (483 °C).

(B1)

|  |   |     |       |  |   |                   |                |                |            |                 |                     |  |
|--|---|-----|-------|--|---|-------------------|----------------|----------------|------------|-----------------|---------------------|--|
| FUNCTIONAL SYMBOLS                                   | THIS DRAWING CONTAINS INFORMATION THAT IS PROPRIETARY TO MOLEX ELECTRONIC TECHNOLOGIES, LLC AND SHOULD NOT BE USED WITHOUT WRITTEN PERMISSION |     |       |  |   |                   |                |                |            |                 |                     |  |
|  | DIMENSION UNITS   |     | SCALE |  | CURRENT REV DESC: REMASTERED IN ECTR AND UPDATED NOTE |                   |                |                |            |                 |                     |  |
|  | IN/MM   |     | 1:1   |  |   |                   |                |                |            |                 |                     |  |
|  | GENERAL TOLERANCES (UNLESS SPECIFIED)   |     |       |  |   |                   |                |                |            |                 |                     |  |
| DIVISIONAL SYMBOLS                                   | 4 PLACES  |     | MM    |  | INCH  |                   | EC NO: 708789  |                | 2022/05/12 |                 | <b>SD-19203-025</b> |  |
|  | 3 PLACES  |     |       |  |   |                   | DRWN: PAWANC   |                | 2022/06/01 |                 |                     |  |
|  | 2 PLACES  |     |       |  |   |                   | CHKD: DMYRICK  |                | 2022/06/02 |                 | PSD 001 B1          |  |
|  | 1 PLACE   |     |       |  |   |                   | APPR: JMACNEIL |                |            |                 | REVISION            |  |
| 0 PLACES   |   |     |       |  |   | INITIAL REVISION: |                | 05/12/02       |            | DOCUMENT NUMBER |                     |  |
| ANGULAR TOL  |   | ± ° |       |  |   | DRWN: ASAYDEH     |                | 05/12/02       |            | DOC TYPE        |                     |  |
| DRAFT WHERE APPLICABLE MUST REMAIN WITHIN DIMENSIONS |   |     |       |  |   | APPR: R DEROSS    |                |                |            | DOC PART        |                     |  |
| THIRD ANGLE PROJECTION                               |   |     |       |  |   | DRAWING           |                | SERIES         |            | SHEET NUMBER    |                     |  |
|  |   |     |       |  |   | B-SIZE            |                | 19203          |            | 1 OF 1          |                     |  |
|  |   |     |       |  |   | MATERIAL NUMBER   |                | CUSTOMER       |            |                 |                     |  |
|  |   |     |       |  |   | SEE CHART         |                | GENERAL MARKET |            |                 |                     |  |