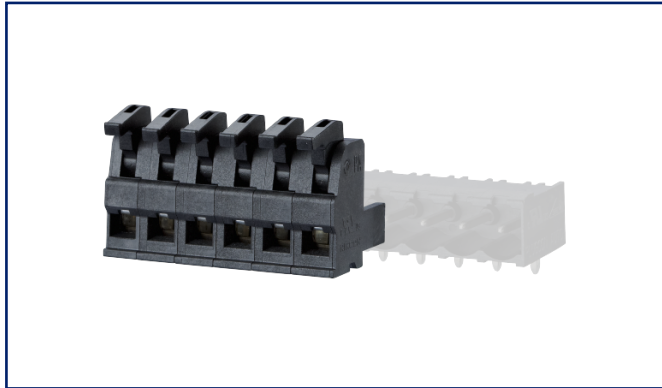


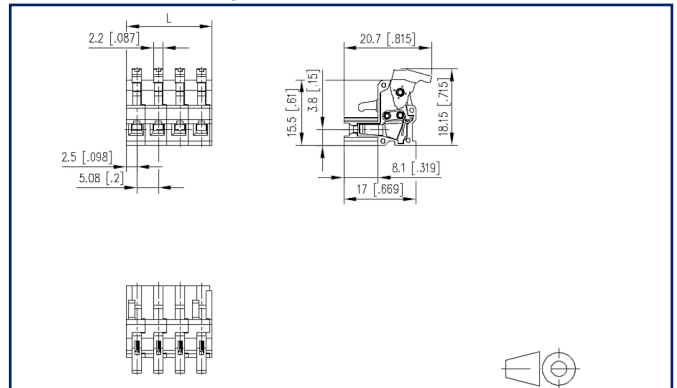
Data sheet

SP046xxVBNC ASP046

Illustrations



Dimensional drawing



See enlarged drawings at the end of document

Product specification

- spring clamp terminal block, pluggable
- centerline 5.08 mm, direction of connection vertical 0°
- fittable without loss of poles
- color black
- eccentric lever, wire entry uncodeable side parallel to plug direction



Technical Data



General Data

| | | | |
|---------------------------|---------|--------|--------|
| min. number of poles | 2 | | |
| max. number of poles | 24 | | |
| Insulating material class | CTI 400 | | |
| clearance/creepage dist. | 4 mm | | |
| Protection category | IP20 | | |
| Min. insul. strip length | 4 mm | | |
| Rated current | 10 A | | |
| Overvoltage category | III | III | II |
| Pollution degree | 3 | 2 | 2 |
| Rated voltage | 32 V | 200 V | 200 V |
| Rated test voltage | 1.5 kV | 1.5 kV | 1.5 kV |

Terminal data

| | | | |
|--------------------------|--|--|--|
| rat.wiring solid AWGmax | 0.08 mm ² - 1.5 mm ² / AWG 28 - AWG 16 | | |
| rat.wiring strand.AWGmax | 0.08 mm ² - 1.5 mm ² / AWG 28 - AWG 16 | | |

Approvals

| | | | |
|---|---------------------|--|--|
|  V / A / AWG | 300 / 10 / 28 - 16 | | |
| approval UL - File No. | E121004 | | |
|  1 mm ² | 250 V / 4 kV / 10 A | | |

Material

| | |
|-----------------------------|--------------|
| insulating material | PA46 |
| flammability class | V0 |
| spring material | Spring steel |
| contact material | CuSn |
| Contact surface | Sn |
| Glow-Wire Flammability GWFI | - |
| Glow-Wire Flammability GWIT | - |

Climatic Data

| | |
|-------------------------|--------|
| upper limit temperature | 105 °C |
| lower limit temperature | -40 °C |

general

U | Contact

Data sheet

SP046xxVBNC ASP046

Page 3/6

P/N

ASP046xx

xx=number of poles

2023/06/28

Version: I

Technical Data

Tolerance

ISO 2768 -mH



U | Contact

Data sheet
SP046xxVBNC ASP046

Page 4/6

P/N
ASP046xx
xx=number of poles
2023/06/28
Version: I

Accessories

| P/N | Designation |
|-------------|---|
| 700025-01-9 | Coding star white with a group of 6 coding pins |

© 2023 METZ CONNECT - Technische Änderungen vorbehalten! Subject to modifications! Sous réserve de modifications techniques!

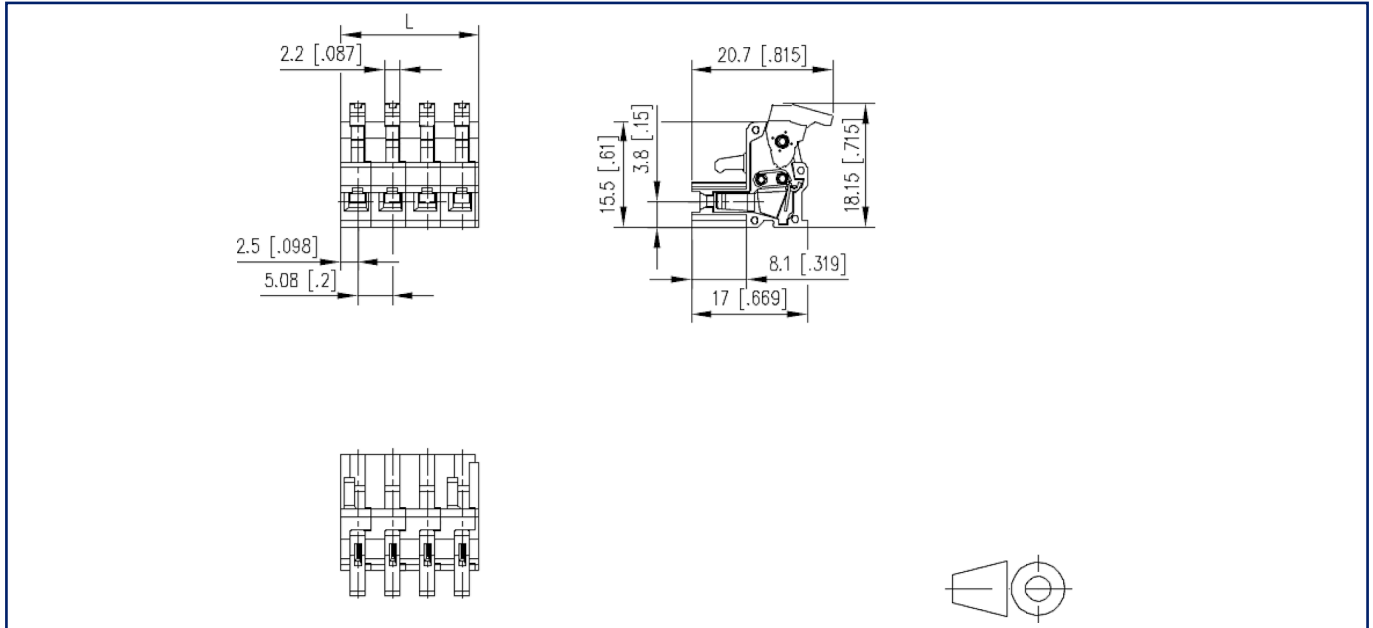


Counterpart

| P/N | Designation |
|--------|----------------------|
| 311781 | PR066xxHBBN Type 178 |
| 311791 | PR066xxVBBN Type 179 |
| 312191 | PT116xxVBEC Type 219 |
| 312201 | PT116xxVBBN Type 220 |
| 312291 | PT116xxHBEC Type 229 |
| 312301 | PT116xxHBBN Type 230 |
| 312861 | PT166xxVGDN Type 286 |
| 312881 | PT166xxHGDN Type 288 |
| 312901 | PT106xxVGDN Type 290 |
| 312921 | PT106xxHGDN Typ 292 |
| 314781 | PR066xxHBEC Type 478 |
| 314791 | PR066xxVBEC Type 479 |

Illustrations

Dimensional drawing



$$L = (\text{pole size} - 1) \times \text{centerline} + 5 \text{ mm [0.197]}$$