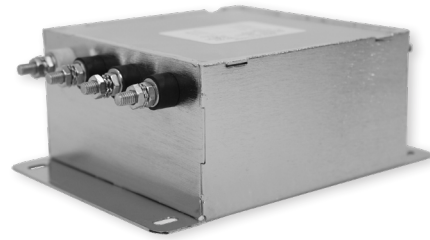


# RPM8000

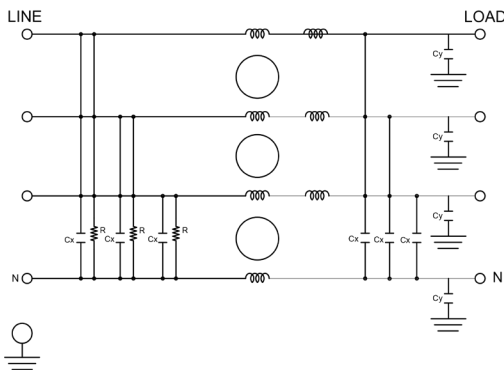
## MIL/COTS 3-PHASE **WYE** EMI POWER LINE FILTER

### FEATURES

- » Rated currents include **5A, 10A, 20A, 30A, 50A, 80A, 125A and 150A**
- » Dual Stage Line Filter
- » Available with **S** (studs)
- » Agency Approved to RoHS
- » Y-cap value can be adjusted to fit specification



### ELECTRICAL SCHEMATIC



### HOW TO ORDER

RPM8000 - Y - Z

Z = TERMINAL (-T)  
X = RATED CURRENT

RPM8000=FILTER SERIES

**NOTE:** USE ANY COMBINATION OF -X (AMPS) WITH ANY -Y RATINGS  
E.G. **RPM8000-10-S**(10 AMPS)

For **X** and **Y** options see product specification table.

### SPECIFICATIONS

OPERATING FREQUENCY	50/60/400 Hz
MAX. OPERATING VOLTAGE	480 VAC +10%
AMBIENT TEMPERATURE	-40 TO 70°C
CLIMATIC CATEGORY	25/100/21
TERMINALS (-T)	STUDS: 5-50A (M5), 80A (M6), 125-150A (M10)

TYP. WEIGHT, LBS (KG) 2.7-35(1.22-15.87)

### TYPICAL LEAKAGE CURRENT

@ 480 VAC 60 Hz 0 - 3.50 mA Max.

### HIPOT RATINGS

LINE TO GROUND 1800 VDC

### TYPICAL APPLICATIONS

- ✓ Mil-461/ DO-160

### NOTE:

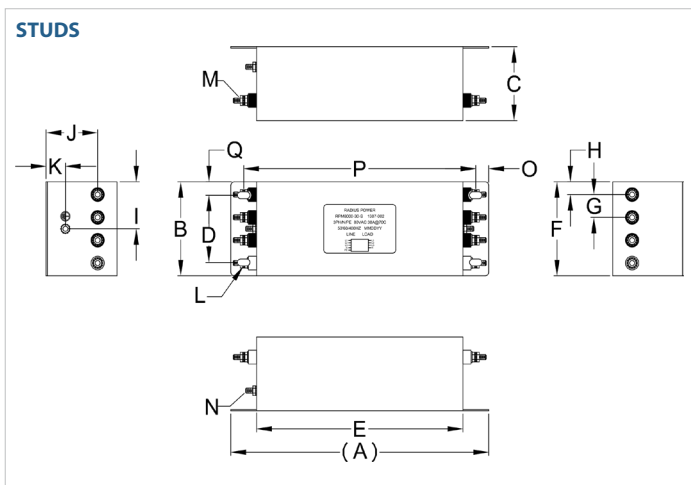
- ✓ Call for other termination types (e.g. Circular Mil-Connector, etc.)

# RPM8000

## MIL/COTS 3-PHASE WYE EMI POWER LINE FILTER

MODEL NO.	RATED CURRENT, A @ 40° C	LEAKAGE CURRENT, mA @ 480V AC, 60 Hz	TERMINAL OPTIONS			MAX. DIMENSIONS" (MM)		
			(QD) INPUT/OUTPUT	(W) INPUT/OUTPUT	(S) INPUT/OUTPUT	WIDTH	(LENGTH)	HEIGHT
RPM8000-5-S	5	3.50			✓	4.25"(108)	6.06"(154)	2.25"(57)
RPM8000-10-S	10	3.50			✓	4.25"(108)	6.06"(154)	2.25"(57)
RPM8000-20-S	20	3.50			✓	4.00"(102)	6.76"(172)	2.75"(70)
RPM8000-30-S	30	3.50			✓	3.50"(89)	10.00"(254)	2.75"(70)
RPM8000-50-S	50	3.50			✓	3.90"(99)	12.36"(314)	3.25"(83)
RPM8000-80-S	80	3.50			✓	6.60"(168)	12.00"(305)	4.50"(114)
RPM8000-125-S	125	3.50			✓	9.60"(244)	17.00"(432)	4.50"(114)
RPM8000-150-S	150	3.50			✓	9.60"(244)	17.00"(432)	4.50"(114)

### RPM8000 MECHANICAL OUTLINES (MM)



SERIES	(A)	B	C	D	E	F	G	H	I	J	K	L	M	N	O	P	Q
<b>STUDS (5/10A)</b>	6.06" (154)	4.25" (108)	2.25" (57)	3.50" (89)	4.25" (108)	4.25" (108)	0.90" (23)	0.75" (19)	2.13" (54)	1.80" (46)	0.75" (19)	Ø 0.40"x0.20", 4x Ø 10.2x5.1, 4x	STUD, M5, 8x	STUD, GND, M5	0.37" (10)	5.00" (127)	0.38" (10)
<b>STUDS (20A)</b>	6.76" (172)	4.00" (102)	2.75" (70)	3.25" (83)	5.00" (127)	4.00" (102)	1.00" (25)	0.50" (13)	2.00" (51)	2.20" (56)	1.00" (25)	Ø 0.40"x0.20", 4x Ø 10.2x5.1, 4x	STUD, M5, 8x	STUD, GND, M5	0.45" (11)	5.80" (147)	0.38" (10)
<b>STUDS (30A)</b>	10.00" (254)	3.50" (89)	2.75" (70)	2.50" (64)	8.00" (203)	3.50" (89)	0.85" (22)	0.48" (12)	1.75" (44)	2.00" (51)	0.75" (19)	Ø 0.48"x0.25", 4x Ø 12.2x6.5, 4x	STUD, M5, 8x	STUD, GND, M5	0.50" (13)	9.00" (229)	0.50" (13)
<b>STUDS (50A)</b>	12.36" (314)	3.90" (99)	3.25" (83)	3.00" (76)	10.00" (254)	4.00" (102)	0.90" (23)	0.65" (17)	2.00" (51)	2.25" (57)	1.00" (25)	Ø 0.50"x0.25", 4x Ø 12.7x6.4, 4x	STUD, M6, 8x	STUD, GND, M6	0.50" (13)	11.00" (279)	0.45" (11)
<b>STUDS (80A)</b>	12.00" (305)	6.60" (168)	4.50" (114)	5.12" (130)	10.00" (254)	6.60" (168)	1.50" (38)	1.00" (25)	3.30" (84)	3.50" (89)	1.00" (25)	0.59"x0.25", 4x Ø 15.2x6.4, 4x	STUD, M6, 4x	STUD, GND, M6	0.50" (13)	11.00" (279)	0.74" (19)
<b>STUDS (125/150A)</b>	17.00" (432)	9.60" (244)	4.50" (114)	8.00" (203)	15.00" (381)	9.60" (244)	4.80" (122)	2.40" (61)	3.25" (83)	3.25" (83)	1.00" (25)	N/A	STUD, M10, 8x	STUD, GND, M10	0.50" (13)	16.00" (406)	0.80" (20)

TYPICAL TOLERANCE: +/-0.02" (0.50MM)

# RPM8000

## MIL/COTS 3-PHASE **WYE** EMI POWER LINE FILTER

### TYPICAL INSERTION LOSS, dB (50/50 Ohm)

Amps	Freq (MHz)	0.15	0.5	1.0	10	30
5	CM (dB)	30	48	60	55	40
	DM (dB)	22	40	55	55	45
10	CM (dB)	30	48	60	55	40
	DM (dB)	22	40	55	55	45
20	CM (dB)	30	48	60	55	40
	DM (dB)	22	40	55	55	45
30	CM (dB)	30	48	60	55	40
	DM (dB)	22	40	55	55	45
50	CM (dB)	30	48	60	55	40
	DM (dB)	22	40	55	55	45
80	CM (dB)	30	48	60	55	40
	DM (dB)	22	40	55	55	45
125	CM (dB)	30	48	60	55	40
	DM (dB)	22	40	55	55	45
150	CM (dB)	30	48	60	55	40
	DM (dB)	22	40	55	55	45



# RPM8000

MIL/COTS 3-PHASE **WYE** EMI POWER LINE FILTER



# RPM8000

MIL/COTS 3-PHASE **WYE** EMI POWER LINE FILTER



# RPM8000

MIL/COTS 3-PHASE **WYE** EMI POWER LINE FILTER



# RPM8000

MIL/COTS 3-PHASE **WYE** EMI POWER LINE FILTER