

Voltage selector switch, 2 stages, series-parallel, PCB mounting



See below:

**Approvals and Compliances**

**Description**

- Voltage Selector , 2 stage
- Series-parallel connections
- PCB terminals

**References**

Alternative: version for panel mounting [SWA1 \(Frontpl\)](#)

**Weblinks**

[pdf data sheet](#), [html datasheet](#), [General Product Information](#), [Approvals](#), [Distributor-Stock-Check](#), [Detailed request for product](#)

**Technical Data**

|                                 |  |
|---------------------------------|--|
| Ratings                         | IEC: 6.3 A / 250 VAC; 50 Hz  |
|                                 | UL: 6.3 A / 250 VAC; 60 Hz   |
|                                 | CSA: 6.3 A / 250 VAC; 60 Hz  |
| Mounting                        | PCB  |
| Terminal                        | Solder / THT   |
| Number of Stages                | 2  |
| Lifetime                        | 300 operating cycles (without load)                                |
| Degree of Protection            | front side IP40  |
| Protection Class                | Suitable for appliances with protection class II acc. to IEC 61140 |
| Allowable Operation Temperature | -40 °C to 85 °C  |
| Climatic Category               | 25/85/21 acc. to IEC 60068-1                                       |
| Material: Socket                | Thermoplastic, black, UL 94V-0                                     |
| Weight                          | 3.9 g  |

|                                 |  |
|---------------------------------|--|
| Solderability                   | 235 °C / 2 sec acc. to IEC 60068-2-20, Test Ta, method 1   |
| Resistance to Soldering Heat    | 260 °C / 5 sec acc. to IEC 60068-2-20, Test Tb, method 1A  |
| Insulation Resistance           | > 10'000MΩ (500VDC; 1min)                                  |
| Contact Resistance              | < 10 mΩ at 20 mV   |
| Dielectric Strength             | > 2kVAC between L-N<br>> 4kVAC between L/N-PE (1min; 50Hz) |
| Clearance and Creepage Distance | > 3mm<br>> 8mm between L/N-PE                              |
| Resistance to Vibration         | acc. to IEC 60068-2-6, test Fc                             |

**Approvals and Compliances**

Detailed information on product approvals, code requirements, usage instructions and detailed test conditions can be looked up in [Details about Approvals](#)

SCHURTER products are designed for use in industrial environments. They have approvals from independent testing bodies according to national and international standards. Products with specific characteristics and requirements such as required in the automotive sector according to IATF 16949, medical technology according to ISO 13485 or in the aerospace industry can be offered exclusively with customer-specific, individual agreements by SCHURTER.

**Approvals**



The approval mark is used by the testing authorities to certify compliance with the safety requirements placed on electronic products.

Approval Reference Type: SWA2

| Approval Logo | Certificates                  | Certification Body | Description            |
|---------------|-------------------------------|--------------------|------------------------|
|               | <a href="#">VDE Approvals</a> | VDE                | Certificate Number:    |
|               | <a href="#">UL Approvals</a>  | UL                 | UR File Number: E72661 |



## Product standards

Product standards that are referenced

| Organization   | Design                | Standard         | Description                  |
|--|-----------------------|------------------|------------------------------|
|  | Designed according to | UL 508           | Industrial control equipment |
|  | Designed according to | CSA C22.2 no. 14 | Industrial Control Equipment |




## Application standards

Application standards where the product can be used

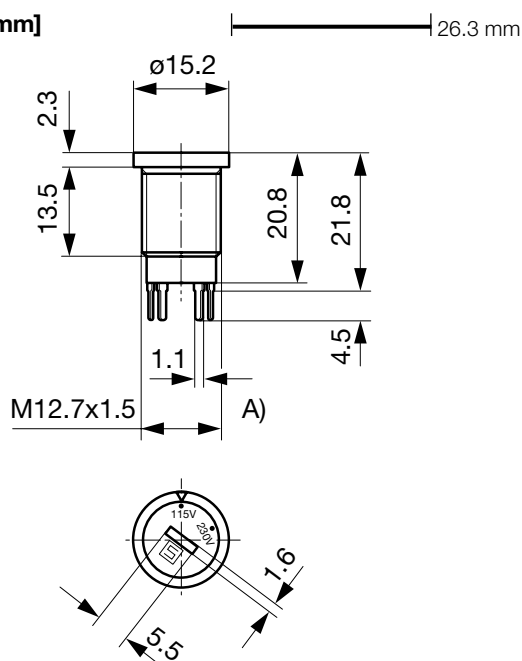
| Organization   | Design                         | Standard       | Description  |
|--|--------------------------------|----------------|--|
|  | Suitable for applications acc. | IEC/UL 62368-1 | Audio/video, information and communication technology equipment - Part 1: Safety requirements  |
|  | Suitable for applications acc. | IEC 60335-1    | Safety of electrical appliances for household and similar purposes. Meets the requirements for appliances in unattended use. This includes the enhanced requirements of glow wire tests acc. to IEC 60695-2-11 or -12 & -13. |

## Compliances

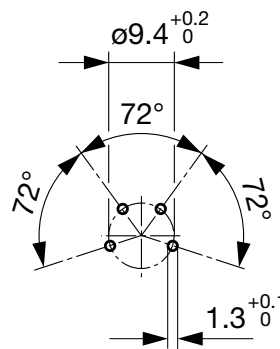
The product complies with following Guide Lines

| Identification  | Details  | Initiator   | Description   |
|---|--|-------------|---|
|   | <a href="#">CE declaration of conformity</a>   | SCHURTER AG | The CE marking declares that the product complies with the applicable requirements laid down in the harmonisation of Community legislation on its affixing in accordance with EU Regulation 765/2008. |
|   | <a href="#">UKCA declaration of conformity</a> | SCHURTER AG | The UKCA marking declares that the product complies with the applicable requirements laid down in the British Amendment of Regulation (EC) 765/2008.  |
|  | <a href="#">REACH</a>                          | SCHURTER AG | On 1 June 2007, Regulation (EC) No 1907/2006 on the Registration, Evaluation, Authorization and Restriction of Chemicals 1 (abbreviated as "REACH") entered into force.                               |

## Dimension [mm]

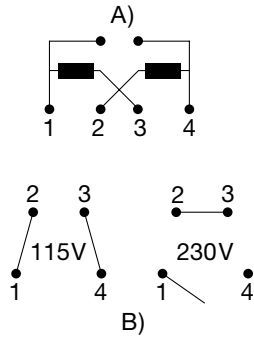


## Drilling diagram



A) double start thread

## Diagrams



A) Power mains

B) Internal contact arrangement for series-parallel connection

## All Variants

| Letterings |         | Order Number |
|------------|---------|--------------|
| Stage 1    | Stufe 2 |              |
| 110        | 220     | 0033.4601    |
| 120        | 240     | 0033.4603    |
| 115        | 230     | 0033.4604    |
| 230        | 240     | 0033.4610    |
|            |         | 0033.4614    |
| 120        | 230     | 0033.4615    |
| 100        | 230     | 0033.4619    |

Most Popular.

Availability for all products can be searched real-time: <https://www.schurter.com/en/Stock-Check/Stock-Check-SCHURTER>

## Packaging Unit

100 Pcs

## Accessories

### Description



[Nut\\_for\\_fuse\\_holder](#)

Mounting accessories for fuse holder



[Designation\\_plates\\_for\\_fuse\\_holders](#)

Marking plate for Fuseholders