

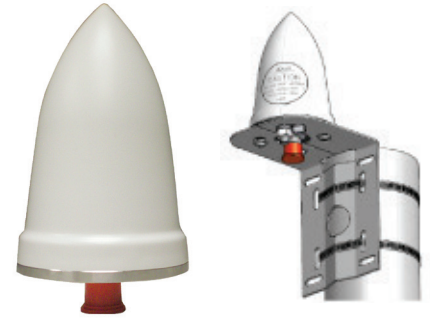
## 40 dB GPS L1/GLONASS L1/GALILEO E1 Timing Antenna with Integrated Lightning Protection

The GPSGL-TMG-SPI-40NCB timing reference antennas are specifically designed for long-lasting, trouble-free deployments in congested cell-site applications. The low noise, high gain amplifier is well suited to address attenuation issues associated with applications requiring longer cable runs.

The proprietary quadrifilar helix design, coupled with multi-stage filtering provides superior out-of-band rejection and lower elevation pattern performance than traditional patch antennas. This multi-band antenna covers GPS L1, GALILEO L1 as well as GLONASS E1 frequencies.

Their unique radome shape sheds water and ice, while eliminating problems associated with bird perching. The antenna comes with surge compliant mounting that addresses industry grounding requirements. Custom models or site kit options are also available.

This antenna is made of materials that fully comply with provisions stipulated by EU directives RoHS 2002/95/EC. The antenna provides integrated, on-board lightning protection capability that alleviates the need for downstream, in-line surge suppressors. The antenna also features ESD, reverse polarity protection and transit voltage suppression.



GPSGL-TMG-SPI-40NCB

### STANDARD CONFIGURATION

Model	Connector	Mount	Radome
GPSGL-TMG-SPI-40NCB	N Female (one - bottom fed)	Fits pipes of 1"-1.45" (25-37 mm) maximum diameter. Medium duty mount (GPS-TMG-MMD), grounding screw, and lug nut included.	Color: White

### ELECTRICAL SPECIFICATIONS - GNSS ANTENNA

Frequency Range	LNA Gain	Element Gain	Polarization	Out of Band Rejection
1590 ± 30 MHz	40 dB ± 4 dB @ GPS L1 & GALILEO E1 38 dB ± 4 dB @ GLONASS L1	≥ 3 dBic	Right hand circular	≥ -60 dB @ f ≤ 1530 MHz ≥ -60 dB @ f ≥ 1660 MHz

### ELECTRICAL SPECIFICATIONS - GNSS ANTENNA, continued

Noise Figure	Current Draw	DC Voltage	VSWR	Nominal Impedance
< 2.5 dB @ +25°C including pre-selector (maximum)	< 40 mA	2.8-9.0 V (operating) ≤ 28.0 V (survivability)	< 2.0:1	50 ohms

### MECHANICAL & ENVIRONMENTAL SPECIFICATIONS

Dimensions	Weight	Housing Material	Lightning Protection	Temperature Range	Humidity
7.25" H x 3.20" D (184 x 81 mm)	0.75 lbs (0.34 kg)	ASA	Per EN61000-4-5 Level 4	-40°C to +85°C	95%