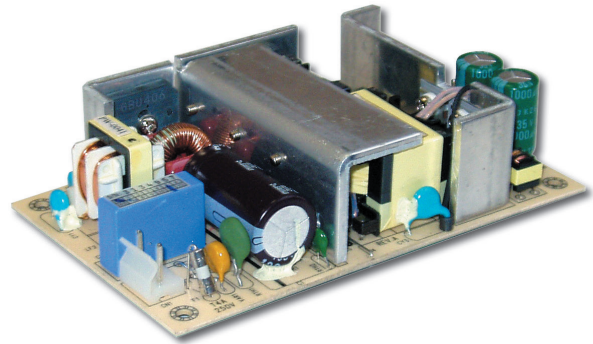


## 120W, 3 x 5" Single Output Power Supplies

### Features

- ◆ Low Profile
- ◆ Convection cooled
- ◆ Wide Range AC Input with PFC
- ◆ Global Safety Agency Compliance
- ◆ Industry standard footprint



### Key Market Segments & Applications



### Specifications

Model		
Output Power	W	120W
Line & Load Regulation	%	See model selector
Ripple & Noise	%	1%
Hold Up Time (typical)	ms	16ms (Full load at 115VAC input)
Overcurrent Protection	%	105 - 120%
Overvoltage Protection	%	110 - 130%, cycle AC line to reset
Input Voltage Range	-	90-264 VAC, 47-63 Hz (440Hz with reduced PFC)
AC Input Current	A	2.5A Max
Harmonic Correction (PFC)	-	Meets EN61000-3-2 (typically >0.9)
Efficiency	%	Typically 85% full load at nominal AC Line
Inrush Current Limiting	A	<50A peak @ 230VAC cold start
Leakage Current	mA	<0.75mA (264VAC, 60Hz)
Surge Immunity	-	EN61000-4 (-2 through -5)
EMI	-	FCC Class B, EN55022 B
Cooling	-	Convection
Withstand Voltage	-	Input to Ground 1.5kVAC, Input to Output 3kVAC, Output to Ground 500VDC
Isolation Resistance	-	>20M at 25°C & 70%RH, Output to Ground 500VDC
Operating Temperature	°C	0 to +40°C, derate linearly to 50% load from 40°C to 60°C
Temperature Coefficient	%/°C	±0.05%/°C
Storage Temperature	°C	-10 to +70°C
Humidity (non-condensing)	-	20-90%RH operating, 20-95%RH non-operating
Shock	-	< 196.1m/s <sup>2</sup> (20G)
Vibration	-	10Hz-55Hz amplitude (sweep 1 min), <2G X, Y, Z axis for 1 hour each
Altitude	m	2000m operating, 5000m storage
Safety Agency Approval	-	IEC/UL/CSA/EN 62368-1, 60950-1, CE and UKCA Mark
Size W x L x H	in	3 x 5 x 1.27"
Weight	g	300
Warranty	yrs	1 year

## Model Selector

Models	Output Voltage	Output Load	Output Regulation
SCS120PW12	12V	10A	3%
SCS120PW15	15V	8A	2%
SCS120PW18	18V	6.67A	2%
SCS120PW19	19V	6.32A	2%
SCS120PW24	24V	5A	2%
SCS120PW30	30V	4A	2%
SCS120PW32	32V	3.75A	2%
SCS120PW36	36V	3.34A	2%
SCS120PW48	48V	2.5A	2%

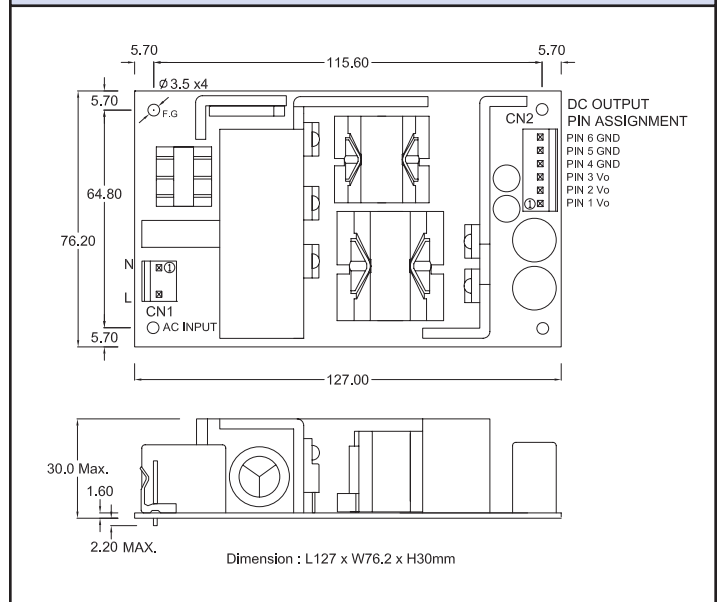
## Mating Connectors

Mating	Molex Connector	Molex Pins
CN1	09-50-8031	08-52-0113
CN2	09-50-8061	08-52-0113

## Other Industrial Products

EFE300	3" x 5" 300W single output
CSS150	3" x 5" 150W single output (Medical)
NV175	3" x 5" 175W single to quad outputs
SC40/60	3" x 5" 40 - 80W single to quad outputs
ZPSA/ZPT	2" X 4" 40 - 60W single to triple outputs
ZWS	5 to 240W single output

## Outline Drawing



For Additional Information, please visit  
<https://product.tdk.com/info/en/products/power/index.html>

