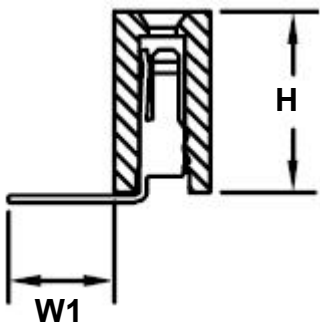
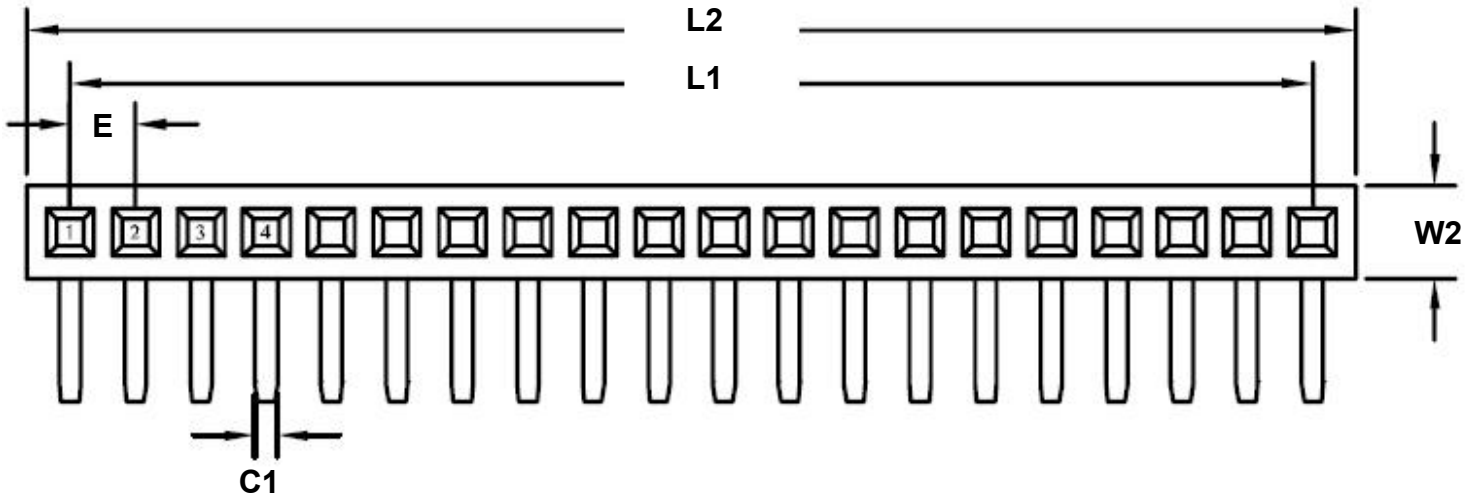
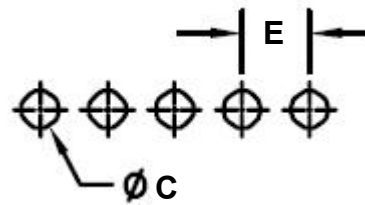


1.00 mm 40 pin Right Angle Female Header Through Hole Gold

REF.	DIMENSIONS					
	mm			inches		
	MIN.	TYP.	MAX.	MIN.	TYP.	MAX.
C		0.50				
C1		0.32				
E		1.00				
H		2.00				
L1		39.00				
L2		40.40				
W1		2.40				
W2		1.50				



Recommended PCB Hole Layout



SPECIFICATIONS

Plastic body construction: PA6T plastic (320°C melting point)

Pin construction: Gold plated (brass pin, with 1um gold over 50um nickel)

Operating temperature range: -40°C to +130°C

Reflow maximum temperature: +260°C