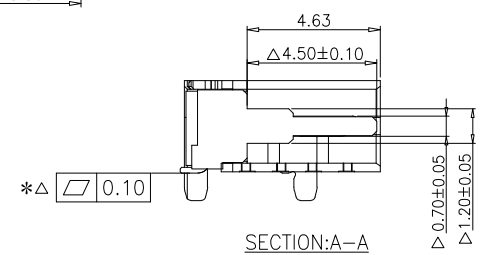
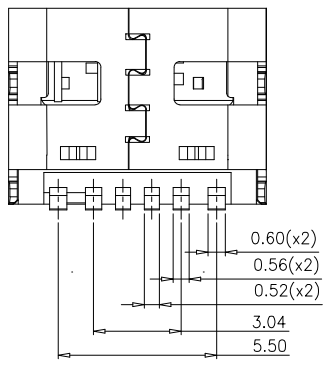
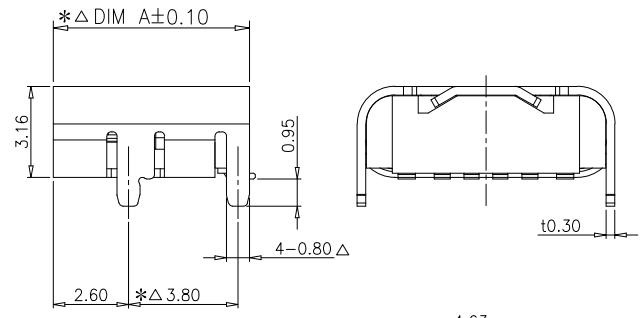
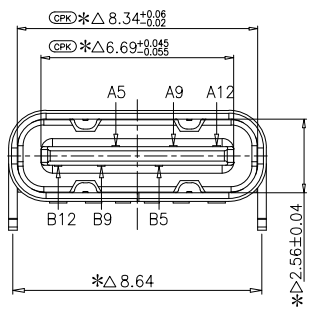
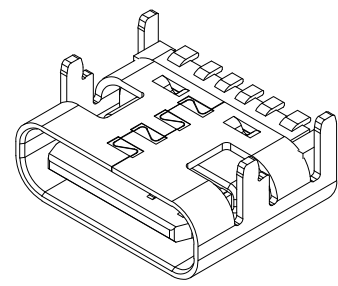
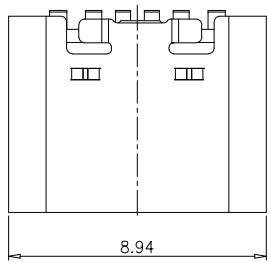


A
B
C
D
E
F
G
H
I
J
K
L
M



NOTE1:

- MATERIAL SPECIFICATION:
 - HOUSING:HIGH TEMPERATURE RESISTANT PLASTIC,
 - CONTACTS:COPPER ALLOY
 - MID PLATE: STAINLESS STEEL
 - FRONT SHELL: STAINLESS STEEL
- PLATING SPECIFICATION:
 - CONTACTS:
 - Ni 50u" MIN. UNDER PLATED OVER ALL.
 - Au PLATED ON THE FUNCTIONAL AREA OF CONTACT. (GOLD PLATING THICKNESS FOLLOW THE P/N)
 - FRONT SHELL:
 - SEE TABLE1.
 - SHIELD PLATE&EMI PLATE:
 - CLEAR ONLY
- MECHANICAL PERFORMANCE,
 - INSERTION FORCE: 0.5~2.0kgf.
 - REMOVAL FORCE: 0.8kgf~2.0kgf.
 - DURABILITY: 5000 CYCLES.
- ELECTRICAL PERFORMANCE,
 - CURRENT RATING:3.0A
VOLTAGE RATING:5.0V
 - LLCR:
 - VBUS & GND PINS AND OTHER PINS: 40mΩ/PIN MAX.
 - SHIELD: 50mΩ MAX.
 - LLCR MAX. CHANGE OF ALL PINS: 10mΩ.
 - INSULATION RESISTANCE: 100MΩ MIN
 - DIELECTRIC WITHSTAND VOLTAGE,AC 100V FOR 1 MINUTE.
- ENVIRONMENTAL PERFORMANCE:
 - OPERATING TEMPERATURE: -25°C~+85°C.
- IR REFLOW:
 - THE PEAK TEMPERATURE ON THE BOARD SHALL BE MAINTAINED FOR 10 SECONDS AT 260°C.
- COMPLY WITH RoHS 2.0 AND REACH AND OTHER ENVIRONMENTAL PROTECTION REQUIREMENTS
- 带"Δ"符号为重点管控尺寸
带"*"符号为巡检管控尺寸
带"CPK"符号为CPK管控尺寸

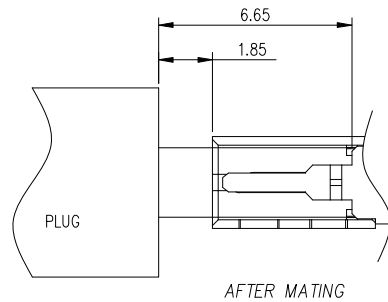
深圳市虹成电子有限公司

名称
TITLE: **TYPE-C座**

料号 PART NO. **HC-TYPE-C-6P-010C**

SCALE 1:1 UNIT:mm A4 SHEET: 1 of 1

					General	Angle	设计		
					X±0.25	X°±3°	DESIGN		
					.X±0.20	.X°±2°	校阅		
					.XX±0.15	.XX°±1°	CHECK		
					.XXX±0.08		承认		
					GENERAL TOLERANCE UNLESS OTHERWISE NOTED		APPRO.		
工程变更通知单号 ECN NO.	A0 版次 REV	NEW 说明 DESCRIPTION	何平 改变 CHANGE	2021.05.22 日期 DATE					



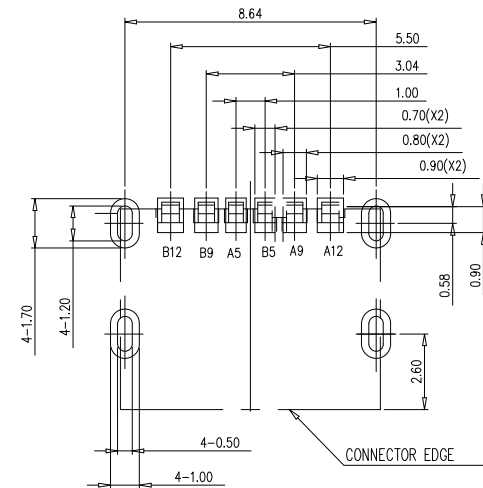
USB TYPE-C PIN ASSIGNMENTS

PIN NUMBER	SIGNAL NAME	PIN NUMBER	SIGNAL NAME
A12	GND	B12	GND
A9	V BUS	B9	V BUS
A5	CC1	B5	CC2

ORDER INFORMATION

P / N: TC02-006F W1_04 B T1 L

- PACKING
 - L: REEL WITHOUT CAP
 - R: REEL WITH CAP
- SHELL PLATING
 - T1: Ni 50u"Min
- HOUSING COLOR
 - A: WHITE
 - B: BLACK
- CONTACT PLATING
 - W1: Au 1u" and Tin 40~80u"



RECOMMENDED PCB LAYOUT(TOP VIEW)
THICKNESS 1.6±0.10MM; DEFAULT TOLERANCE: ±0.05

深圳市虹成电子有限公司

		General	Angle	设计		
		X±0.25	X'±3'	DESIGN		
		.X±0.20	.X'±2'	核阅		
		.XX±0.15	.XX'±1'	CHECK		
		.XXX±0.08		承认		
		GENERAL TOLERANCE UNLESS OTHERWISE NOTED		APPRO.		
工程变更通知单号 ECN NO.	版次 REV	说明 DESCRIPTION	何平	日期 DATE	2021.05.22	

名称 TITLE:		TYPE C 6PIN板上贴板母座			
料号 PART NO.	HC-TYPE-C-6P-010C				
SCALE	1:1	UNIT: mm	A4	⊕ □	SHEET: