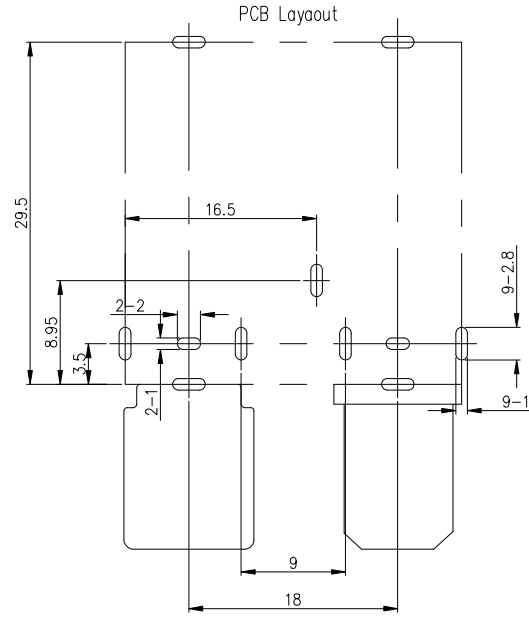
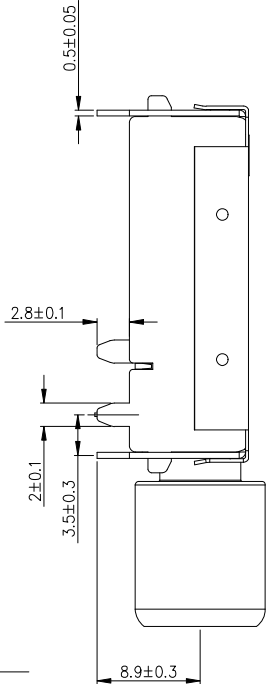
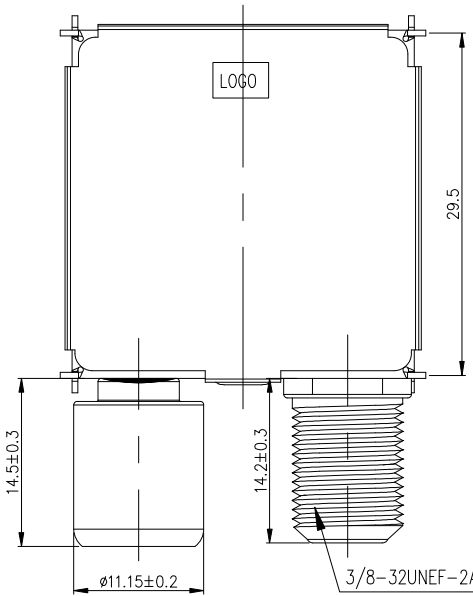
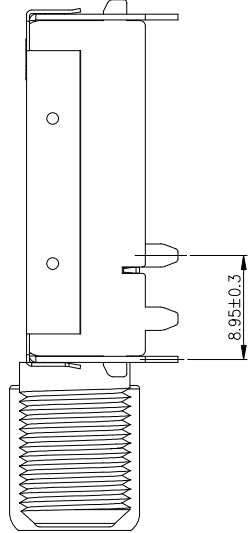
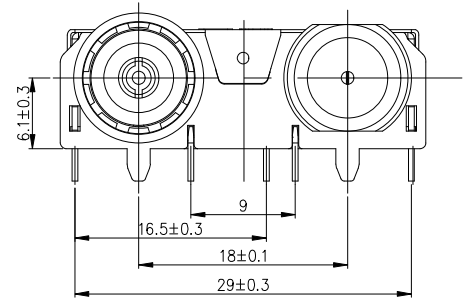


版本	更改事项	签名	日期
1.1	支架, 隔板, 盖板电镀由镀铜 $\geq 1.0\mu\text{m}$ , 改为镀底 $\geq 1.5\mu\text{m}$ , 镀铜 $\geq 2.0\mu\text{m}$	周丽霞	2023.07.10



8	绝缘体	2	PPS	IEC头棕色/RF头棕色
7	接触片	1	磷铜	D.CuSn $\geq 1\mu\text{m}$
6	插芯	2	磷铜	D.CuSn $\geq 1\mu\text{m}$
5	IEC头	1	黄铜	D.CuSn $\geq 1\mu\text{m}$
4	RF头	1	Zinc Alloy	D.Ni $\geq 1\mu\text{m}$
3	盖板	1	冷轧板 t=0.3mm	Ni $\geq 1.5\mu\text{m}$ , CuSn $\geq 2\mu\text{m}$
2	隔板	1	冷轧板 t=0.5mm	Ni $\geq 1.5\mu\text{m}$ , CuSn $\geq 2\mu\text{m}$
1	支架	1	冷轧板 t=0.5mm	Ni $\geq 1.5\mu\text{m}$ , CuSn $\geq 2\mu\text{m}$
NO.	Part Name 零件名称	Qty 数量	Material 材料	Plating/Color 镀层及颜色

SPECIFICATION (技术要求)

- Operating Temperature(环境温度):  $-20^{\circ}\text{C}\sim 85^{\circ}\text{C}$
- Voltage Rating(额定电压): 50V AC/DC
- Current Rating(额定电流): 0.5A
- Contact Resistance(接触电阻): 100m $\Omega$
- Insulation Resistance(绝缘电阻): 100M $\Omega$
- Dielectric Withstanding Voltage(耐电压): 500V AC Min
- Insertion/Withdrawal Force(插拔力): 5~50N
- Life Time(mating cycles)寿命: >1000 Cycles
- All Material Must be Comply With RoHS.  
(此物料所有材料均符合RoHS要求.)

GENERAL TOLERANCES		DIMENSION:		PART NAME	DRAWING NO		SHEET	
.XX $\pm 0.20$		X $\pm 0.40$			射频频座	HC-PBZ-R046		1 OF 1
.X $\pm 0.30$		ANGULAR: $\pm 2^{\circ}$		PART NO.		SCALE	UNIT	REV
DRAWN				CUSTOMER NAME			mm	1.1
CHECKED				CUSTOMER P/N	深圳市虹成电子有限公司			
APPROVED								