



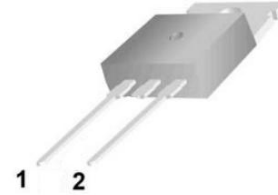
## MUR1005 THRU MUR1060

VOLTAGE RANGE	100 to 600 Volts
CURRENT	10.0 Ampere

## Features

- Low power loss, high efficiency, High surge capacity
- For use in low voltage, high frequency inverters
- Metal silicon junction, majority carrier conduction
- High current Capability, low forward voltage drop
- Guard ring for over voltage protection

TO-220AC



## Mechanical Data

- Case: TO-220AC molded plastic over glass passivated chip
- Case: Copper base plate & Plastic Shell
- Molding compound meets UL 94 V-0 flammability rating, Halogen-free, RoHS-compliant, and commercial grade
- Weight: 0.08ounce, 2.24 gram

## Maximum Ratings and Electrical Characteristics

- Ratings at 25°C ambient temperature unless otherwise specified
- Single Phase, half wave, 60Hz, resistive or inductive load
- For capacitive load derate current by 20%

TYPE NUMBER	SYMBOL	MUR 1005	MUR 1010	MUR 1020	MUR 1030	MUR 1040	MUR 1060	UNIT
Maximum Repetitive Peak Reverse Voltage	$V_{RRM}$	100	150	200	300	400	600	Volts
Maximum RMS Voltage	$V_{RMS}$	70	105	140	210	280	420	Volts
Maximum DC Blocking Voltage	$V_{DC}$	100	100	200	300	400	600	Volts
Maximum Average Forward Rectified Current 0.375"(9.5mm) lead length at $T_A=100^\circ\text{C}$	$I_{(AV)}$	10						Amps
Peak Forward Surge Current 8.3mS single half sine wave superimposed on rated load (JEDEC method)	$I_{FSM}$	160						Amps
Maximum Instantaneous Forward Voltage at 10A	$V_F$	0.95		1.25		1.70		Volts
Maximum DC Reverse Current at rated DC blocking Voltage at	$T_A = 25^\circ\text{C}$	5.0						$\mu\text{A}$
	$T_A = 125^\circ\text{C}$	50						
Maximum Reverse Recovery Time (NOTE 1)	$T_{RR}$	35		50				nS
Typical Junction Capacitance (NOTE 2)	$C_J$	62						pF
Typical Thermal Resistance (NOTE 3)	$R_{\theta JA}$	1.4						$^\circ\text{C/W}$
Operating Junction Temperature Range	$T_J$	(-55 to +150)						$^\circ\text{C}$
Storage Temperature Range	$T_{STG}$	(-55 to +150)						$^\circ\text{C}$

## Notes:

1. Reverse Recovery Test Conditions:  $I_f=0.5\text{A}$ ,  $I_r=1.0\text{A}$ ,  $I_{rr}=0.25\text{A}$ .
2. Measured at 1.0MHz and applied reverse voltage of 4.0 Volts.
3. Unit mounted on P.C.B. with 0.033"x0.043"(1.00mm×1.30mm) copper pads.



# 10A SUPER FAST BARRIER RECTIFIER

## MUR1005 THRU MUR1060

VOLTAGE RANGE 100 to 600 Volts  
 CURRENT 10.0 Ampere

### Ratings and Characteristic Curves ( $T_A=25^\circ\text{C}$ unless otherwise noted)

FIG.1-TYPICAL FORWARD CURRENT DERATING CURVE

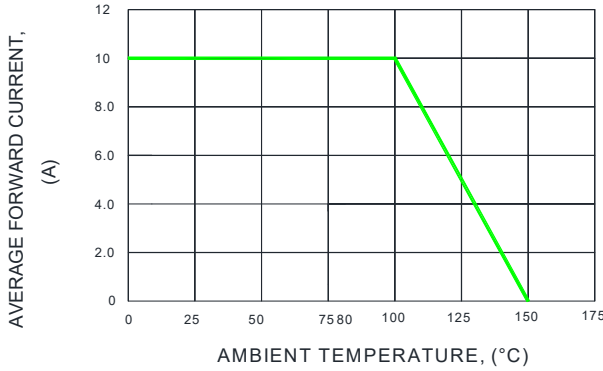


FIG.2-MAXIMUM NON-REPETITIVE PEAK FORWARD SURGE CURRENT

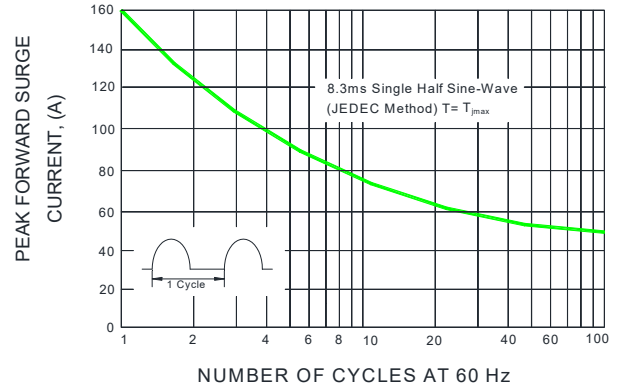


FIG.3-TYPICAL INSTANTANEOUS FORWARD CHARACTERISTICS

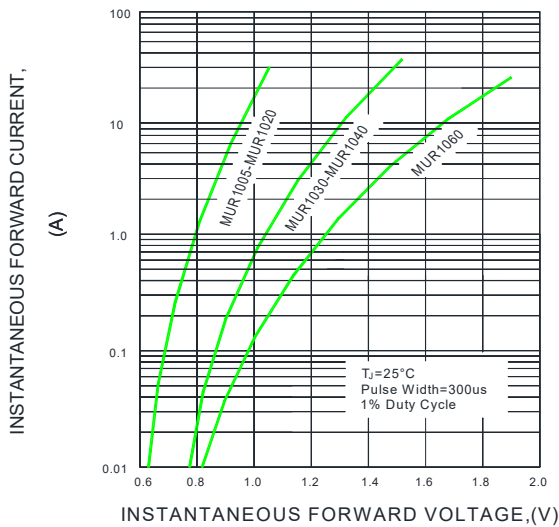


FIG.4-TYPICAL REVERSE CHARACTERISTICS

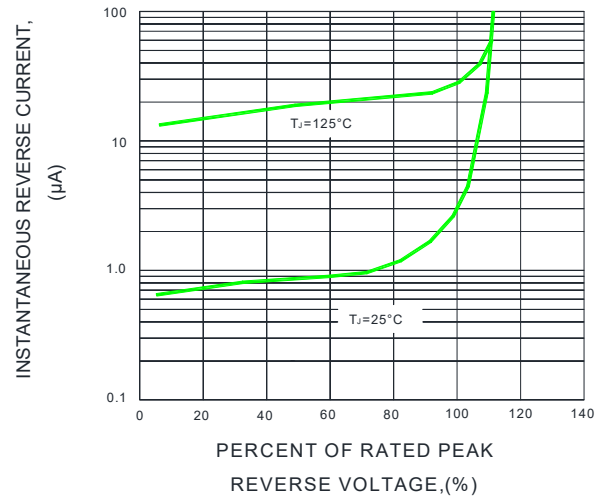


FIG.5-TYPICAL JUNCTION CAPACITANCE

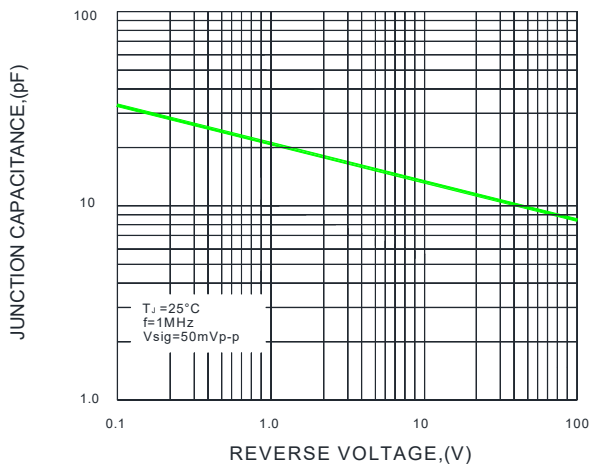
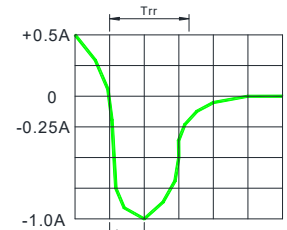
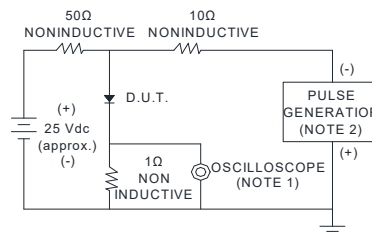


FIG.6-TEST CIRCUIT DIAGRAM AND REVERSE RECOVERY TIME CHARACTERISTIC



- NOTES : 1. Rise Time=7ns max. Input Impedance= 1 magohm, 22pF  
 2. Rise time=10ns max. Source Impedance= 50 ohms

SET TIME BASE FOR 50/100ns/cm

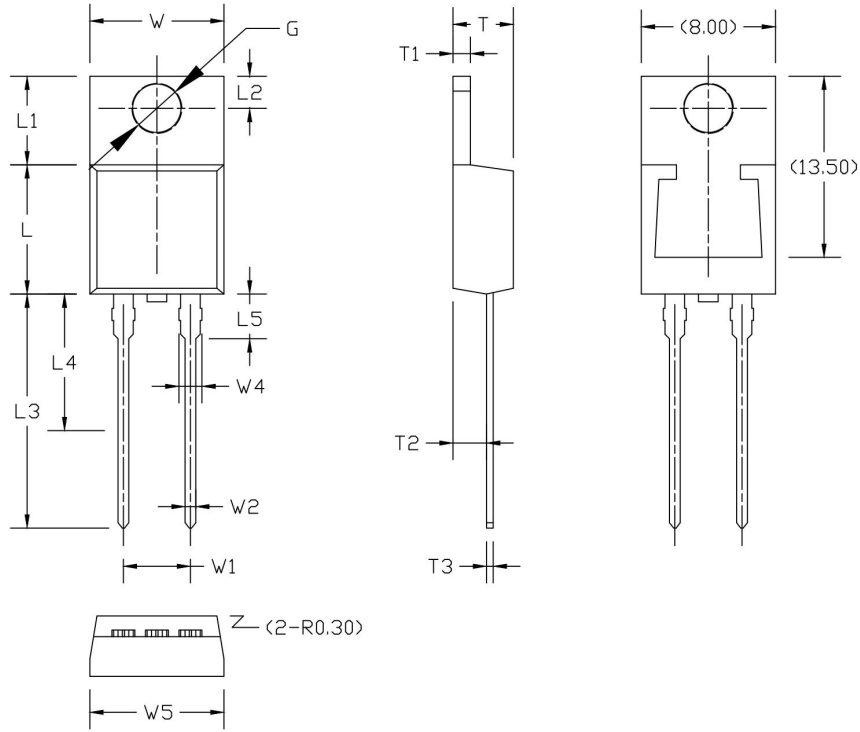


# 10A SUPER FAST BARRIER RECTIFIER

## MUR1005 THRU MUR1060

VOLTAGE RANGE 100 to 600 Volts  
CURRENT 10.0 Ampere

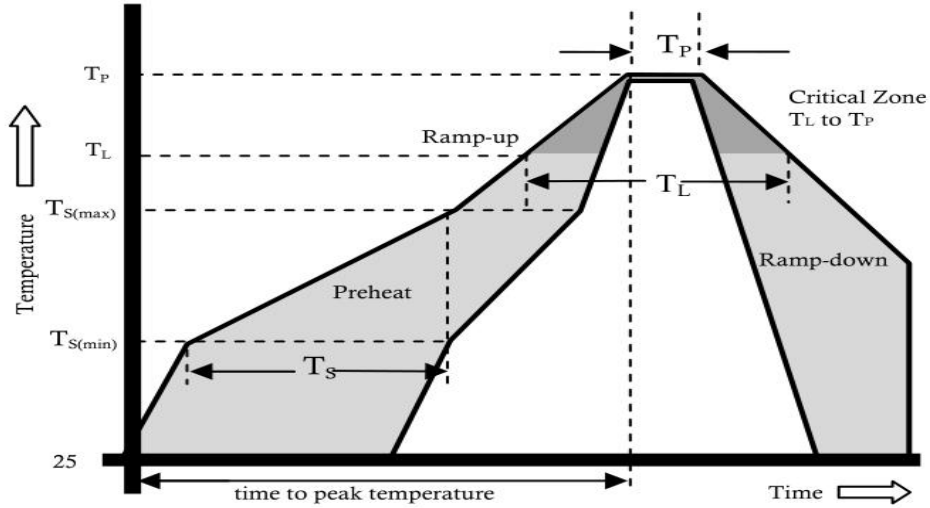
### Package Outline Dimensions millimeters



Symbol	Size		Symbol	Size		Symbol	Size		Symbol	Size	
	Min	Max		Min	Max		Min	Max		Min	Max
W	9.66	10.28	L	8.30	9.00	L5	3.69	4.10	G(Φ)	3.70	3.90
W1	5.08 (TYP)		L1	6.10	6.60	T	4.30	4.70			
W2	0.70	0.95	L2	2.70	2.90	T1	1.15	1.40			
W3	1.17	1.37	L3	12.70	14.27	T2	2.20	2.80			
W4*	1.32	1.72	L4	6.60	7.10	T3	0.35	0.45			



Reflow Profile



Reflow Condition		Pb-Free Assembly
Pre Heat	Temperature Min.	+150°C
	Temperature Max.	+200°C
	Time(Min to Max)	60-180 secs.
Average ramp up rate(Liquidus Temp(TL) to peak)		3°C/sec. Max.
TS(max) to TL - Ramp-up Rate		3°C/sec. Max.
Reflow	Temperature (TL)(Liquidus)	+217°C
	Temperature (TL)	60-150 secs.
Peak Temp (TP)		+(260+0/-5)°C
Time within 5°C of actual Peak Temp (TP)		25 secs.
Ramp-down Rate		6°C/sec. Max.
Time 25°C to peak Temp (TP)		8 min. Max.
Do not exceed		+260°C

**MUR1005 THRU MUR1060****VOLTAGE RANGE      100 to 600 Volts**  
**CURRENT                10.0 Ampere**

---

## Disclaimer

The information presented in this document is for reference only. Chongqing changjie Electronic Technology Co., Ltd. reserves the right to make changes without notice for the specification of the products displayed herein to improve reliability, function or design or otherwise.

The product listed herein is designed to be used with ordinary electronic equipment or devices, and not designed to be used with equipment or devices which require high level of reliability and the malfunction of which would directly endanger human life (such as medical instruments, transportation equipment, aerospace machinery, nuclear-reactor controllers, fuel controllers and other safety devices), Changjie or anyone on its behalf, assumes no responsibility or liability for any damages resulting from such improper use of sale.

This publication supersedes & replaces all information previously supplied. For additional information, please visit our website [http:// www.czlangjie.com](http://www.czlangjie.com) , or consult your nearest Langjie's sales office for further assistance.