



C201368A Series



Hologen Free

1. Features of C201368A Series :

- 31.5 × 21.0mm Max.(L×W), 35.0mm Max. Height.
- Inductance range: 1.0mH~5.0mH, Custom values are welcomed.
- AC common mode noise filter for Power Supplies and Lighting Application.
- Rated Voltage: 250VAC.
- Dielectric strength:1500Vrms,winding to winding.
- UL 94 V-0 Material.
- Operating temperature: -40 to +125°C.
- RoHS & HF Compliant Components.

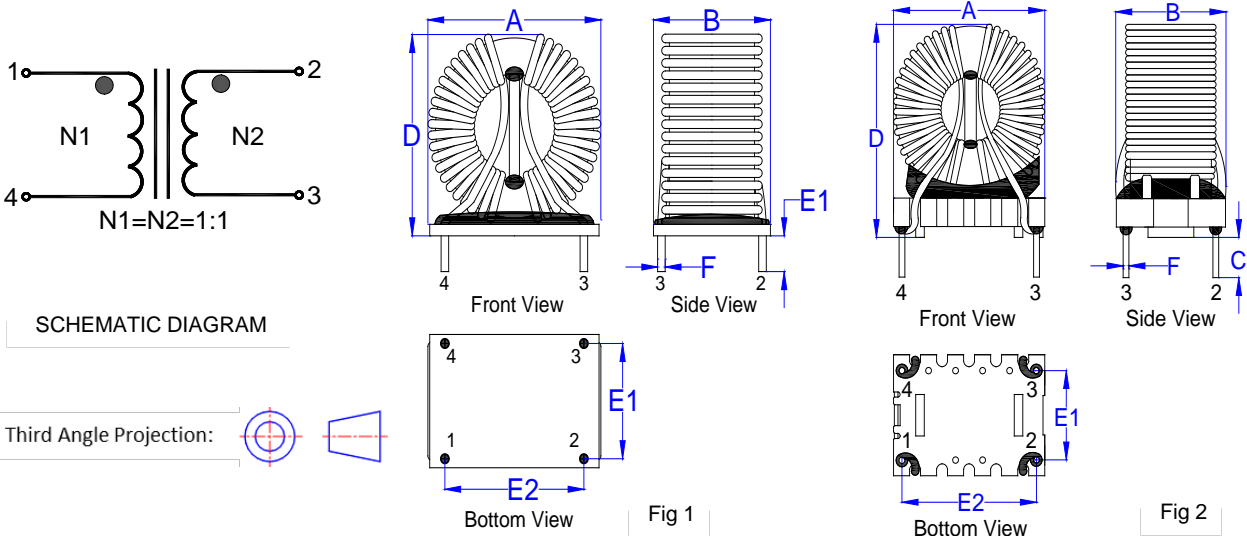


2. Electrical Characteristics of C201368A Series:

ITG Part Number	OCL ¹ (PIN1-4/2-3)	DCR	I _{rated} ²	Dim. A	Dim. B	Dim. D	Dim. F	Fig
	(mH)	(mΩ)	(A)	(mm)	(mm)	(mm)	(mm)	
	±30%	Max. @25°C	Max. @25°C	Max.	Max.	Max.	Nom.	
C201368A-102NHF	1.00	8.50	11.00	31.50	21.00	30.00	Φ1.40	1
C201368A-152NHF	1.50	12.00	9.50	30.50	20.00	35.00	Φ1.00	2
C201368A-222NHF	2.20	18.00	7.50	30.50	20.00	35.00	Φ1.00	2
C201368A-332NHF	3.30	29.00	6.00	30.50	20.00	35.00	Φ1.00	2
C201368A-502NHF	5.00	54.00	4.40	30.50	20.00	35.00	Φ1.00	2

3. Mechanical Dimension of C201368A Series (Unit:mm):

A	B	C	D	E1	E2	F
Max.	Max.	±0.50	Max.	±0.50	±0.50	Nom.
See table above	See table above	5.00	See table above	15.00	25.00	See table above



● New York 1 914 347 2474 ● Taipei 886 2 2698 8669 ● Kaohsiung 886 7 350 2275
 ● Japan 81 568 85 2830 ● Shenzhen 86 755 8418 6263 ● Shanghai 86 21 5424 5141 ● Hong Kong 852 9688 9767
 ● sales@ITG-Electronics.com ● www.ITG-Electronics.com Revision A.0: August 18, 2020

*Due to continuous product improvement, all specifications are subject to change without prior notice. Kindly contact an ITG field application engineer or a sales representative prior to purchase.



Notes:

1. Open Circuit Inductance (OCL) measured at 10KHz, 0.1mA @ 25°C.
2. Irated: Irate is defined as the applied current level that cause 40 °C temperature rise without force air flow.
3. Impedance measures with both windings in parallel and at ambient temperature(25°C).

4. Impedance vs Frequency Curve of C201368A Series :

