



Hologen Free

## 1. Features of C201367A Series :

- 31.5 × 23.5mm Max.(L×W), 35.0mm Max. Height.
- Inductance range: 1.0mH~5.0mH, Custom values are welcomed.
- AC common mode noise filter for Power Supplies and Lighting Application.
- Rated Voltage: 250VAC.
- Dielectric strength:1500Vrms,winding to winding.
- UL 94 V-0 Material.
- Operating temperature: -40 to +125°C.
- RoHS & HF Compliant Components.

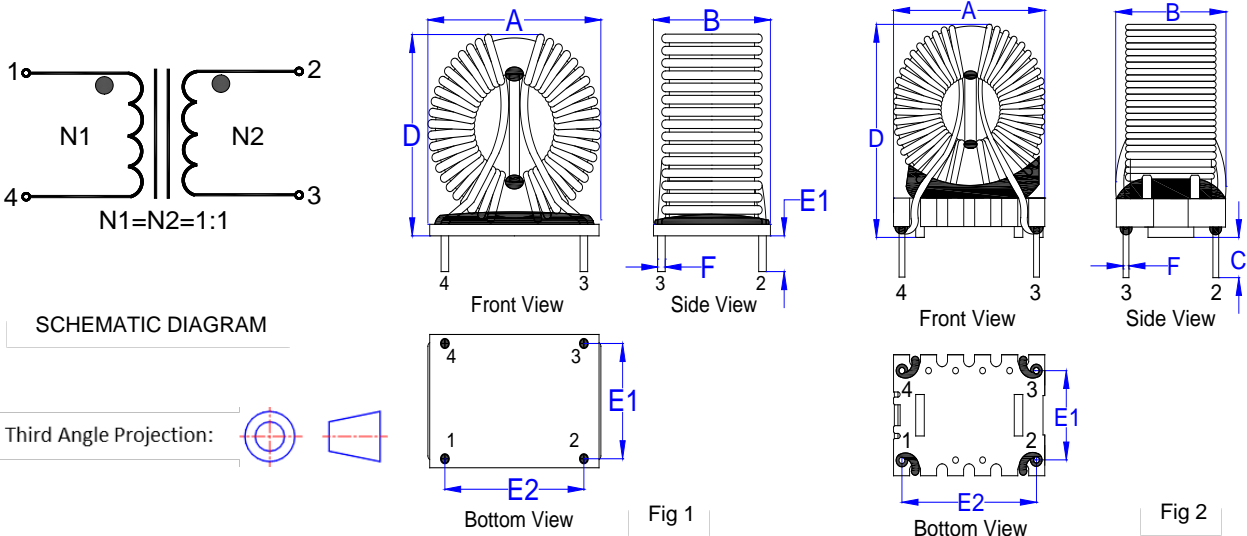


## 2. Electrical Characteristics of C201367A Series:

ITG Part Number	OCL <sup>1</sup> (PIN1-4/2-3)	DCR	I <sub>rated</sub> <sup>2</sup>	Dim. A	Dim. B	Dim. D	Dim. E1	Dim. F	Fig
	(mH)	(mΩ)	(A)	(mm)	(mm)	(mm)	(mm)	(mm)	
	±30%	Max. @25°C	Max. @25°C	Max.	Max.	Max.	±0.50	Nom.	
C201367A-102NHF	1.00	8.00	12.00	31.50	23.50	30.00	17.50	Φ1.50	1
C201367A-152NHF	1.50	11.00	10.00	31.50	23.50	30.00	17.50	Φ1.30	1
C201367A-222NHF	2.20	14.00	9.00	30.50	21.00	35.00	15.00	Φ1.00	2
C201367A-332NHF	3.30	25.00	6.80	30.50	21.00	35.00	15.00	Φ1.00	2
C201367A-502NHF	5.00	45.00	5.00	30.50	21.00	35.00	15.00	Φ1.00	2

## 3. Mechanical Dimension of C201367A Series (Unit:mm):

A	B	C	D	E1	E2	F
Max.	Max.	±0.50	Max.	±0.50	±0.50	Nom.
See table above	See table above	5.00	See table above	See table above	25.00	See table above





**Notes:**

1. Open Circuit Inductance (OCL) measured at 10KHz, 0.1mA @ 25°C.
2. Irated: Irated is defined as the applied current level that cause 40 °C temperature rise without force air flow.
3. Impedance measures with both windings in parallel and at ambient temperature(25°C).

**4. Impedance vs Frequency Curve of C201367A Series :**

