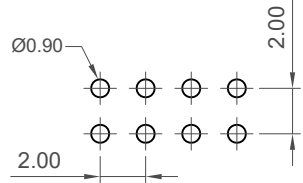
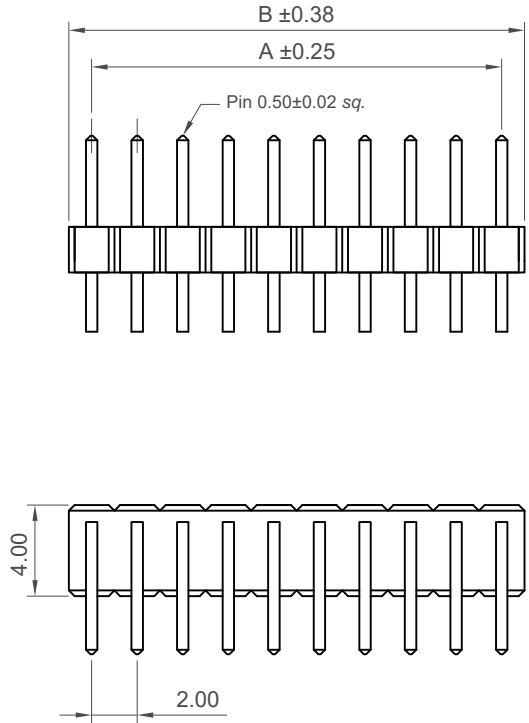
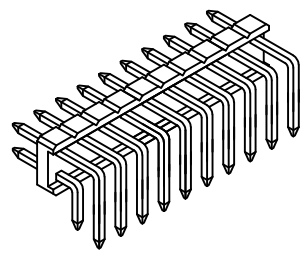
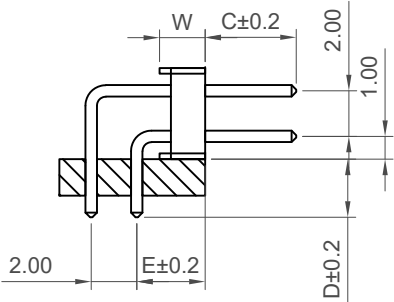


H
G
F
E
D
C
B
A



Recommended PCB Layout



Specifications

Material
 Contact: Copper Alloy
 Insulator:
 Standard: Polyamide, Nylon 6T, UL 94-V0
 Options: Polymer, LCP, UL 94-V0
 Options: Polyester, PBT, UL 94-V0

Plating
 See Ordering Grid

Electrical
 Current Rating: 2 Amp Per Pin
 Insulation Resistance: 1000 MΩ min
 Contact Resistance: 20 mΩ max.
 Dielectric Withstand Voltage: AC 500 V

Mechanical & Environmental
 Operating Temperature: -40°C to +105°C

Soldering Process:
 Nylon 6T (Standard) -
 IR Reflow: 260°C for 10 sec.
 Wave: 230°C for 5-10 sec
 Manual Solder: 350°C for 3-5 sec
 LCP (Option) -
 IR Reflow: 260°C for 10 sec.
 Wave: 250°C for 5-10 sec
 Manual Solder: 350°C for 3-5 sec
 PBT (Option) -
 Manual Solder: 330°C for 3-5 sec
 (Not Suitable for High Temperature Process)

Mates with (Subject to pin length)
 BF065 BF080 BF095 BF100
 BF115 BF120 BF185
Perfect Planar Mating with
 BF110 BF112

No. of Contacts	Dimensions	
	A	B
4	2.0	4.0
6	4.0	6.0
8	6.0	8.0
10	8.0	10.0
12	10.0	12.0
14	12.0	14.0
16	14.0	16.0
18	16.0	18.0
20	18.0	20.0
22	20.0	22.0
24	22.0	24.0
26	24.0	26.0
28	26.0	28.0
30	28.0	30.0
32	30.0	32.0
34	32.0	34.0
36	34.0	36.0
38	36.0	38.0
40	38.0	40.0
42	40.0	42.0
44	42.0	44.0
46	44.0	46.0
48	46.0	48.0
50	48.0	50.0
52	50.0	52.0
54	52.0	54.0
56	54.0	56.0
58	56.0	58.0
60	58.0	60.0
62	60.0	62.0
64	62.0	64.0
66	64.0	66.0
68	66.0	68.0
70	68.0	70.0
72	70.0	72.0
74	72.0	74.0
76	74.0	76.0
78	76.0	78.0
80	78.0	80.0



Ordering Grid
 BF060-XX(X)-X-XXXX-XXXX-XXXX-X-X
 No. of Contacts
 04 to 80

Contact Plating
A = Gold Flash All Over (Standard)
 B = Selective Gold Flash Contact Area/
 Tin On Tail
 C = Tin All Over
 G = 10µ" Gold Contact Area/Tin On Tail
 I = 30µ" Gold Contact Area/Tin On Tail

Dimension W (1/100mm) (Insulator Width)
B = 2.00mm (Standard)
 A = 1.5mm

Dimension C (1/100mm) (Post Length)
0400 = 4.00mm (Standard)
 Or specify Custom Post Length
 eg 0250 = 2.50mm
 (Maximum 1000 = 10.00mm)
 (Minimum 0100 = 1.00mm)

Dimension E (1/100mm) (Centre of Pin to Top of Insulator)
0305 = 3.05mm (Standard)
 (Minimum 0175 = 1.75mm for Insulator width 1.5mm)
 (Minimum 0225 = 2.25mm for Insulator width 2.0mm)
 Or specify Custom Stack Height
 eg 0250 = 2.50mm
 (Maximum 0600 = 6.00mm)

Dimension D (1/100mm) (Tail Length)
0280 = 2.80mm (Standard)
 Or specify Custom Tail Length
 eg 0250 = 2.50mm
 (Maximum 0600 = 6.00mm)
 (Minimum 0100 = 1.00mm)

Packing Options
G = Plastic Box (Standard)
 B = Tape & Reel with Cap (08 to 80 contacts)
 C = Tape & Reel with Film
 D = Tube (08 to 80 contacts)
 E = Tube with Cap (08 to 80 contacts)

Insulator Material
N = Nylon 6T (Standard)
 L = LCP
 P = PBT

Part Number		Product Description	
BF060		2.00mm Pitch Pin Header, Dual Row, Through Hole, Horizontal	
Drawing Date		31st October 2007	
By	CC	Tolerances (Except as Noted)	Units:
Detail	BF060 F PCN	Length X. ± 0.30 XX ± 0.20 XXX ± 0.15 X.XXX ± 0.10	Metric (mm)
Revision	F4	Angle X° ± 5° XX° ± 2° XXX° ± 1° X.XXX° ± 0.5°	3rd Angle Projection
Date	11/08/22		



This drawing is confidential and copyright of Global Connector Technology Ltd (GCT). This drawing must not be copied or disclosed without written consent. E & OE



Not to Scale	Drawn By LYH	Sheet No. 1/1
--------------	--------------	---------------