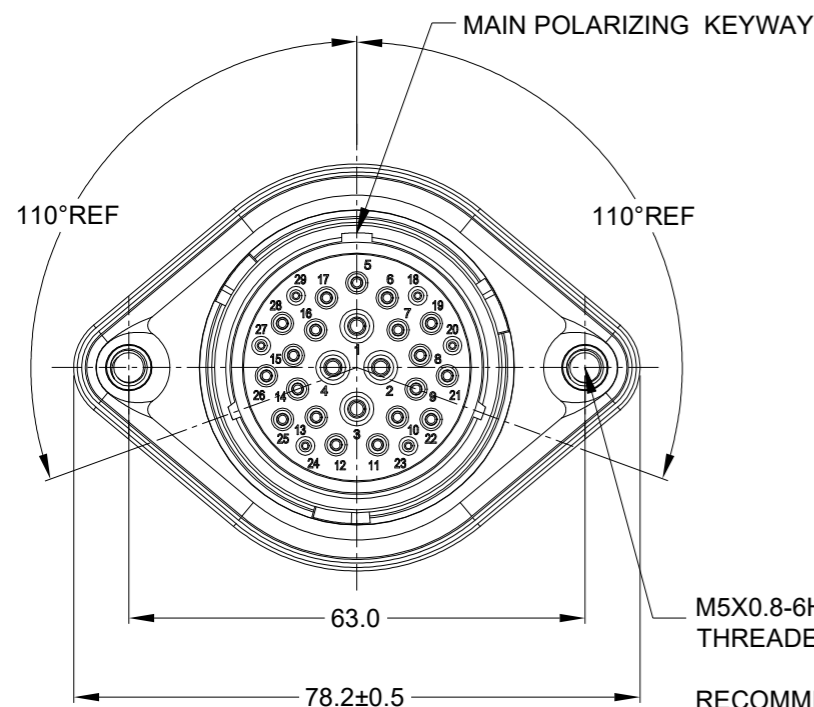
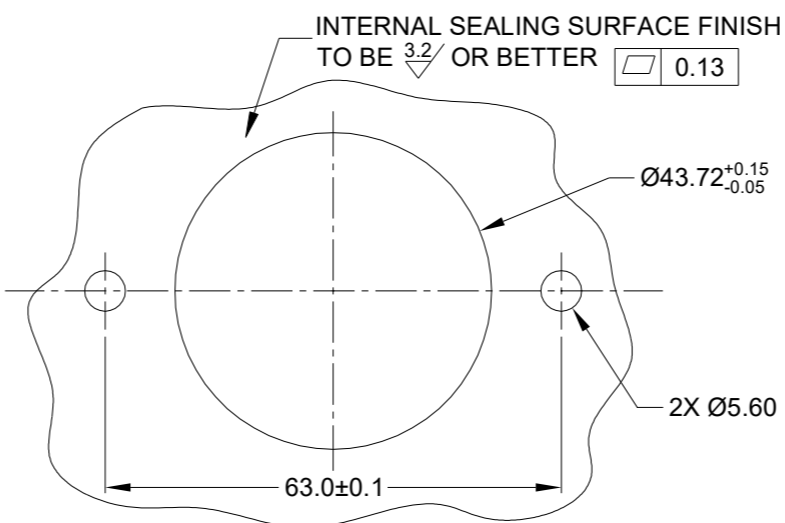
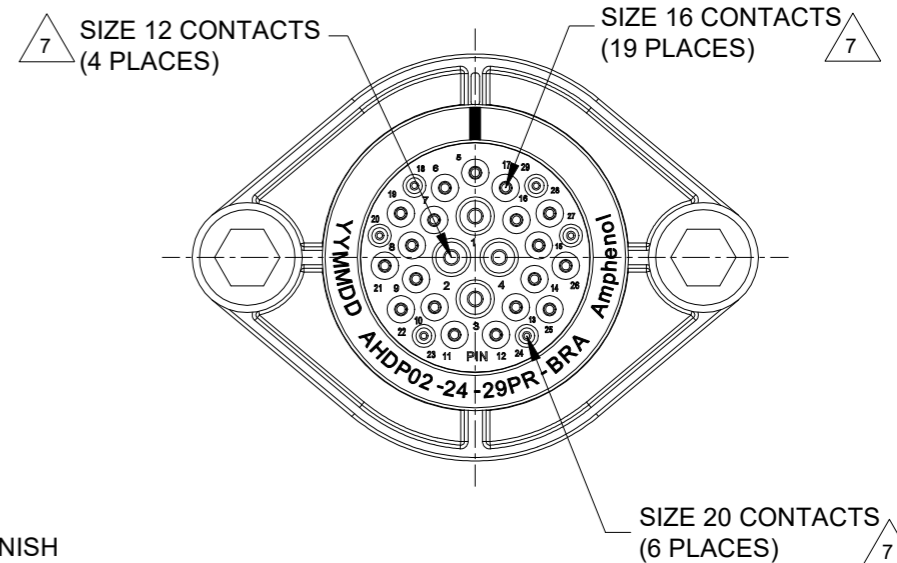
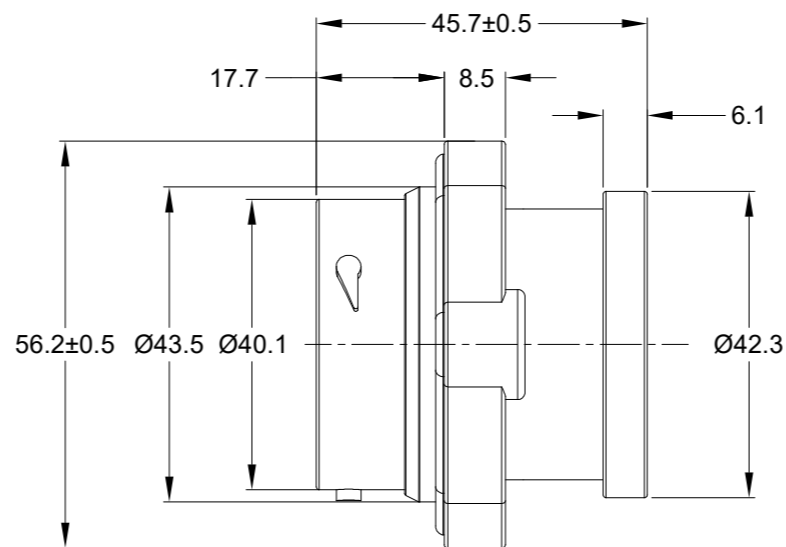


| REVISIONS | | | | | |
|-----------|-----|---------------------|-----------|-----|-------|
| REV | ECO | DESCRIPTION | DATE | BY | APPR |
| A1 | - | RELEASE NEW DRAWING | 01/APR/22 | IAN | TOMMY |



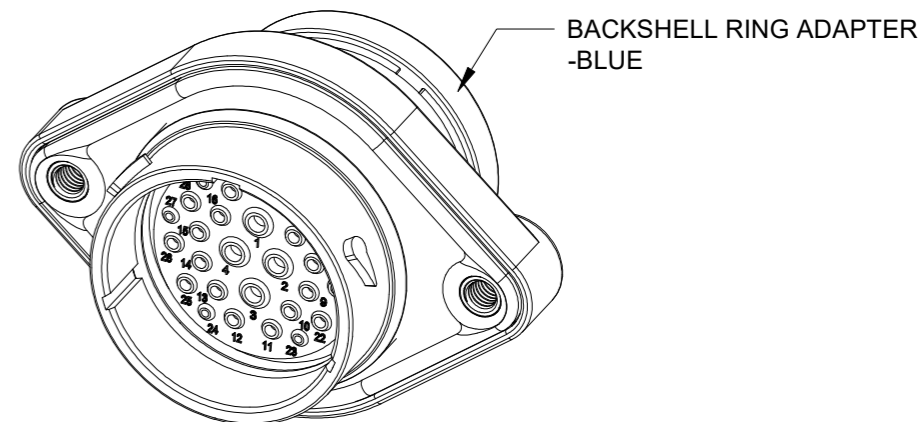
M5X0.8-6H 8mm(2X) DEEP
THREADED INSERT

RECOMMENDED TORQUE
VALUES: 1.9-2.2 N.m



RECOMMENDED PANEL
MOUNTING HOLE

RECOMMENDED PANEL
THICKNESS:1.6 TO 4.7MM



NOTES: UNLESS OTHERWISE SPECIFIED

- MATERIAL:
HOUSING: THERMOPLASTIC; BLACK
SEAL: SILICONE RUBBER
THREADED INSERT: STAINLESS STEEL
- MODIFICATIONS: BACKSHELL RING ADAPTER (BRA);
REDUCED DIA. WIRE SEAL;
SEALED PANEL MOUNT
- SPECIFICATIONS:
3.1 OPERATING TEMPERATURE: -55°C TO +125°C.
3.2 DIELECTRIC WITHSTANDING VOLTAGE: LESS THAN 2
MILLIAMPS CURRENT LEAKAGE @ 1500 VOLTS AC.
3.3 INSULATION RESISTANCE: 1000 MEGOHM MIN @ 25°C.
3.4 MOISTURE RESISTANCE:
IP68(IM OF WATER FOR A PERIOD OF 24 HOURS, MATED
CONDITION);
IP69K(MATED CONDITION)
3.5 MATING CYCLE DURABILITY: 100 CYCLES
3.6 RoHS COMPLIANT
- MATING PART: AHDP06-24-29S* (* = SEAL TYPE)
- ALL DIMENSIONS ARE FOR REFERENCE USE ONLY.
- RECEPTACLE IS SUPPLIED WITH DUST CAP (NOT SHOW)

CONTACT SIZE AND WIRE RANGE:

| CONTACT SIZE | MIN. INSUL O.D. | MAX. INSUL O.D. | TYPICAL WIRE RANGE | CURRENT RATING |
|--------------|-------------------|-------------------|--------------------------------------|----------------|
| 20 | 1.02 mm (.040 in) | 2.10 mm (.083 in) | 16-22 AWG (1.5-0.35mm ²) | 7.5 AMPS |
| 16 | 1.35 mm (.053in) | 2.62 mm (.103 in) | 14-20 AWG (2.0-0.5mm ²) | 13 AMPS |
| 12 | 2.46 mm (.097 in) | 4.01 mm (.158 in) | 10-14 AWG (6.0-2.0mm ²) | 25 AMPS |

| QUANTITY | AHDP02-24-29PR-BRA | DESCRIPTION | ITEM |
|----------|--------------------|-------------|------|
| | | | |

| MATERIALS LIST | | | |
|--|-----------|--|--------------|
| SIGNATURES | DATE | | |
| DRAWN: IAN.XIAO | 01/APR/22 | <h1>Amphenol</h1> <p>Sine Systems - www.amphenol-sine.com 44724 Morley Drive Clinton Township, MI 48036</p> <p>29POS,RECEPTACLE,PIN,24SZ, RD SEAL,BRA,PANELMATE AHDP</p> | |
| CHECKED: SULLEN.ZAHNG | 02/APR/22 | | |
| ENGINEER: | | | |
| APPROVAL: TOMMY.XIE | 06/APR/22 | | |
| CUSTOMER: | | | |
| MATERIAL SPECIFICATIONS: | | | |
| WEIGHT:63.1g | | | |
| PROCESS SPECIFICATIONS: | | | |
| NEXT ASSY: | | | |
| UNLESS OTHERWISE SPECIFIED | | | |
| 1) All dimensions are in metric(mm). | | | |
| 2) Tolerances are as follows: | | | |
| 1 PL DEC ±0.30 | | Fractions ±1/64 | |
| 2 PL DEC ±0.15 | | Angles ±1° | |
| 3 PL DEC ±0.08 | | | |
| 3) Note reference = \triangle | | | |
| THIS DRAWING IS SUPPLIED FOR INFORMATION ONLY. DESIGN FEATURES, SPECIFICATIONS AND PERFORMANCE DATA SHOWN HEREON ARE THE PROPERTY OF THE AMPHENOL CORPORATION. NO RIGHTS OF REPRODUCTION ARE IMPLIED. ALL DIMENSIONS ARE SUBJECT TO NORMAL MANUFACTURING VARIATIONS. | | | |
| SIZE | TYPE | DWG NO. | REVISION |
| B | C- | AHDP02-24-29PR-BRA | A1 |
| SCALE: | NONE | DURAMATE | SHEET 1 OF 1 |

TITLE: 29POS,RECEPTACLE,PIN,24SZ,RD SEAL,BRA,PANELMATE AHDP

DWG NO: AHDP02-24-29PR-BRA

REV: A1

SH: 1

OF: 1