

**Description: 1608 UWB Band Pass Filter**  
**Preliminary**

**PART NUMBER: BPF1608LKAPR6580A**

**Features:**

- Compact Size
- Low loss
- High Soldering Heat Resistance

**Applications:**

- IEEE, 802.15.4

**ELECTRICAL SPECIFICATIONS**

**ELECTRICAL REQUIREMENTS**

Item	Frequency Range(MHz)	Min.	Typ.	Max.
Insertion Loss (dB)	6240~8240	-	1.4	2.2
Insertion Loss (dB) at -40~85°C	6240~8240	-	-	-
Return Loss (dB)	6240~8240	9.54	22.2	-
Attenuation (dB)	2300~3800	38	40.2	-
	5150~5470	16	19.0	-
	5470~5725	6	9.7	-
	5725~5850	3	6.2	-
	5850~5925	1.9	4.4	-
	12500~16500	20	32.3	-
	18700~20000	12	27.6	-
Ripple (dB)	6240~8240	-	0.57	1.5

Operating Temperature Range : -40~85°C

Power Capacity : 3W max.

In the effort to improve our products, we reserve the right to make changes judged to be necessary.

CONFIDENTIAL AND PROPRIETARY INFORMATION

This document contains confidential and proprietary information of Pulse Electronics, Inc. (Pulse) and is protected by copyright, trade secret and other state and federal laws. Its receipt or possession does not convey any rights to reproduce, disclose its contents, or to manufacture, use or sell anything it may describe. Reproduction, disclosure or use without specific written authorization of Pulse is strictly forbidden.

For more information:

Pulse Worldwide Headquarters  
15255 Innovation Drive #100  
San Diego, CA 92128  
USA  
Tel:1-858-674-8100

Pulse/Larsen Antennas  
18110 SE 34<sup>th</sup> St Bldg 2 Suite 250  
Vancouver, WA 98683  
USA  
Tel: 1-360-944-7551

Europe Headquarters  
Pulse GmbH & Do, KG  
Zeppelinstrasse 15  
Herrenberg, Germany  
Tel: 49 7032 7806 0

Pulse (Suzhou) Wireless Products Co, Inc.  
99 Huo Ju Road(#29 Bldg,4<sup>th</sup> Phase  
Suzhou New District  
Jiangsu Province, Suzhou 215009 PR China  
Tel: 86 512 6807 9998

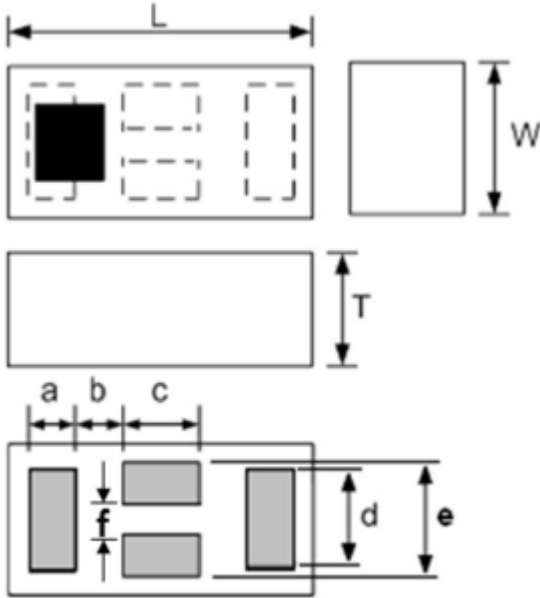


Description: 1608 UWB Band Pass Filter  
Preliminary

PART NUMBER: BPF1608LKAPR6580A

MECHANICAL DIMENSION

Outline

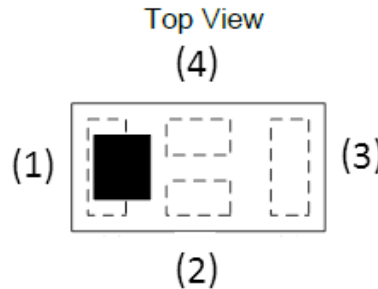


Dimension

L	W	T	a
1.60±0.10	0.80±0.10	0.70±0.10	0.25±0.05
b	c	d	e
0.23±0.05	0.40±0.05	0.55±0.05	0.60±0.05
f			
0.20±0.05			

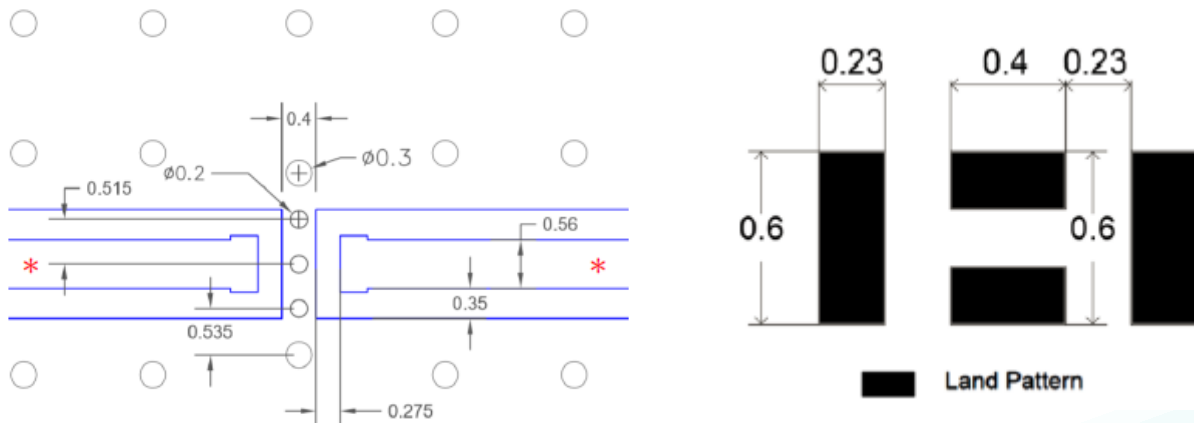
NOTE : Dimensions in mm.

Termination



Terminal name	Function
P1	Input/Output
P2	GND
P3	Input/Output
P4	GND

Reference design of EVB



Unit : mm

Line width should be designed to match 50Ω characteristic impedance, depending on PCB material and thickness.

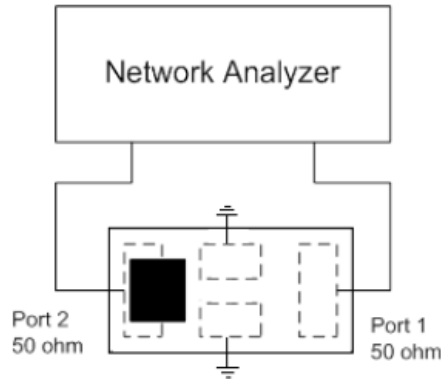
In the effort to improve our products, we reserve the right to make changes judged to be necessary.  
CONFIDENTIAL AND PROPRIETARY INFORMATION

This document contains confidential and proprietary information of Pulse Electronics, Inc. (Pulse) and is protected by copyright, trade secret and other state and federal laws. Its receipt or possession does not convey any rights to reproduce, disclose its contents, or to manufacture, use or sell anything it may describe. Reproduction, disclosure or use without specific written authorization of Pulse is strictly forbidden.

**Description: 1608 UWB Band Pass Filter**  
**Preliminary**

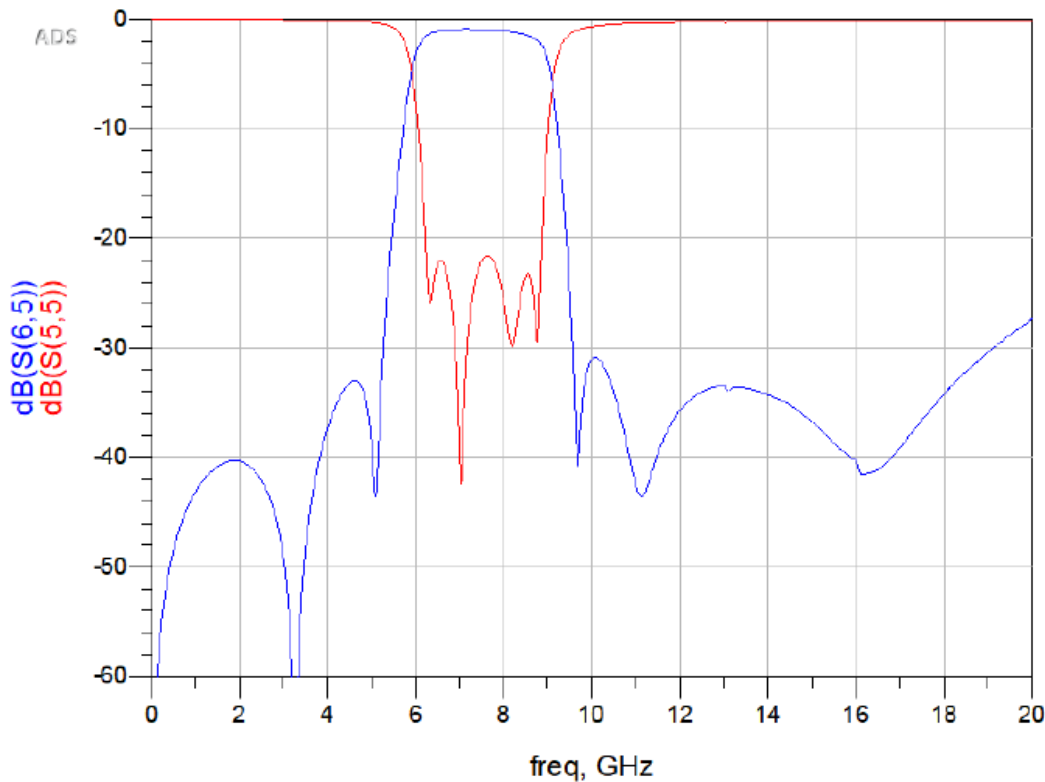
**PART NUMBER: BPF1608LKAPR6580A**

**MEASURING DIAGRAM**



Test Instrument :  
Agilent E5071A Network  
Analyzer.

**ELECTRICAL PERFORMANCES**



- Measured on Agilent E5071C  
Network Analyzer

Frequency Characteristics

In the effort to improve our products, we reserve the right to make changes judged to be necessary.

CONFIDENTIAL AND PROPRIETARY INFORMATION

This document contains confidential and proprietary information of Pulse Electronics, Inc. (Pulse) and is protected by copyright, trade secret and other state and federal laws. Its receipt or possession does not convey any rights to reproduce, disclose its contents, or to manufacture, use or sell anything it may describe. Reproduction, disclosure or use without specific written authorization of Pulse is strictly forbidden.

**Description: 1608 UWB Band Pass Filter  
Preliminary****PART NUMBER: BPF1608LKAPR6580A****REVISION HISTORY**

Revision	Date	Description
Version 1	Feb. 24, 2022	- New issue