

1

2

3

4

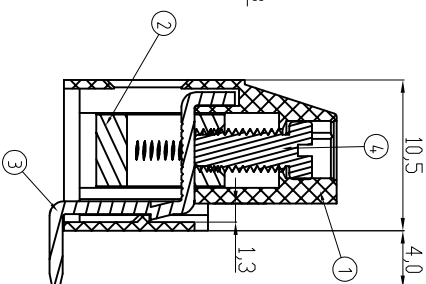
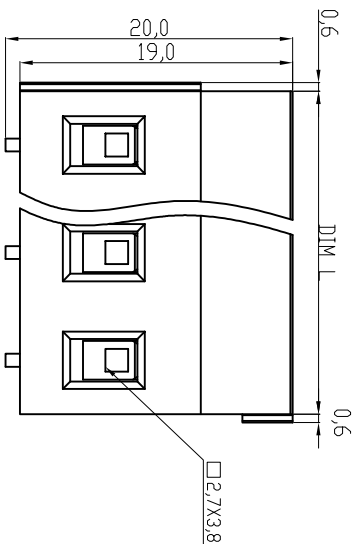
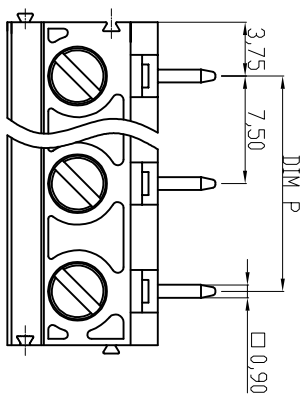
5


6

7

Material

- ① Terminal housing: Thermoplastic (UL94V-0), GREEN  
 ② Clamp: Brass, Ni plated  
 ③ Wire guard solder pin: Copper, Tin plated  
 ④ Terminal screw: Steel Zinc plating " " slot type



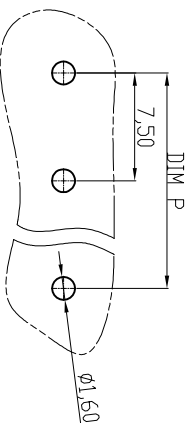
Electrical cULus  
 Voltage rating: 300VAC  
 Current rating: 20A  
 Wire range:  
 Solid wire(AWG): 12-30  
 Stranded wire(AWG): 12-30  
 Torque(Lb-In): 3.5  
 Screw: M3  
 Wire strip length: 6-7mm  
 Withstanding Voltage: 1.6KV  
 Operating temperature: -40°C to +115°C  
 Soldering temperature: 250°C±10°C/5 Sec  
 Safety Approval: 

DIMENSION

L	Nx7.5
P	(N-1)x7.5

N=Number of poles

Poles	Tolerance
2p-6p	±0.15
7p-12p	±0.25
13p-16p	±0.35



RECOMMENDER PCB LAYOUT

RoHS compliant



File No.: E349947

Scale	1:1
TOLERANCE	
X.	±0.50
X.X	±0.30
X.XX	±0.10
DIM	TOL
X.°	±1°
Angle	TOL

①	Add the UL File No.	19.04.2016	Winnie
②	Drawn	19.04.2010	Alex
Id.	Modification	Date	Name

Date	Name	
19.04.2010	Alex	
19.04.2016	Winnie	
Approved	19.04.2016	Winnie

**ASSMANN**  
 WSW/ components

Customer-No.	ASSMANN WSW-No. A-TB750-VJXXV
Drawing-No.	ASS 4112 CO
Replace	rev01
Sheet	

1

2

3

4

5

6

7

H

G

F

E

D

C

B

A