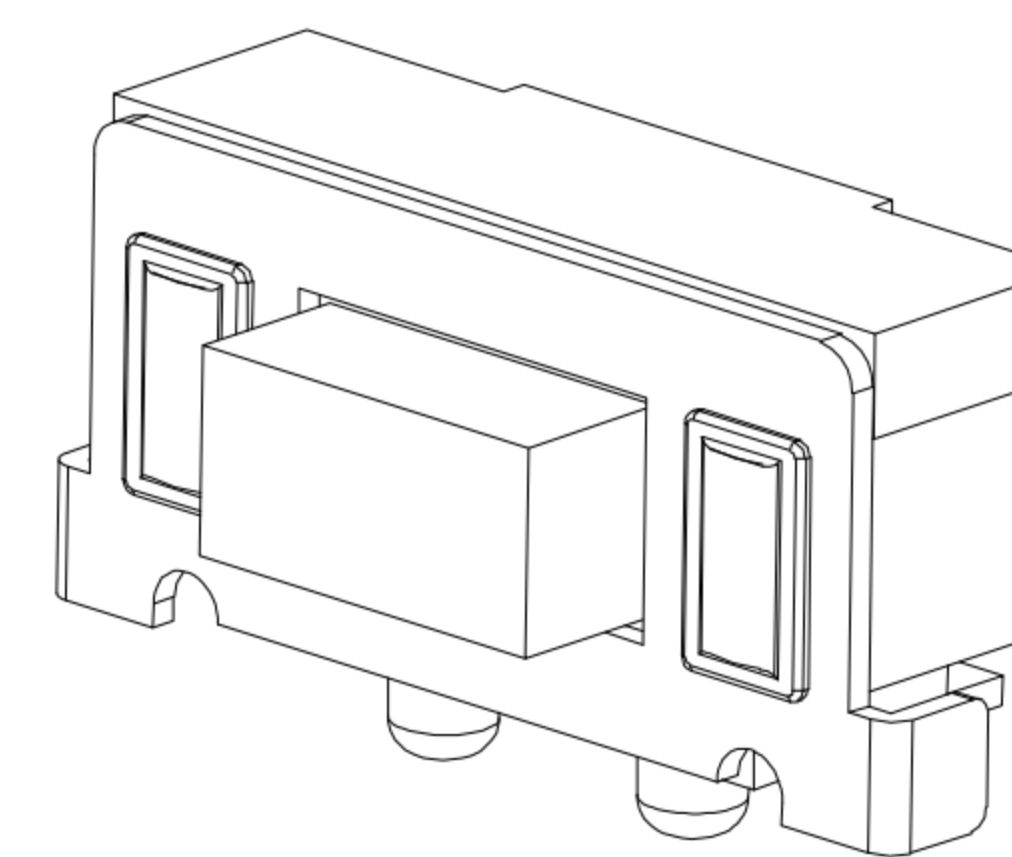
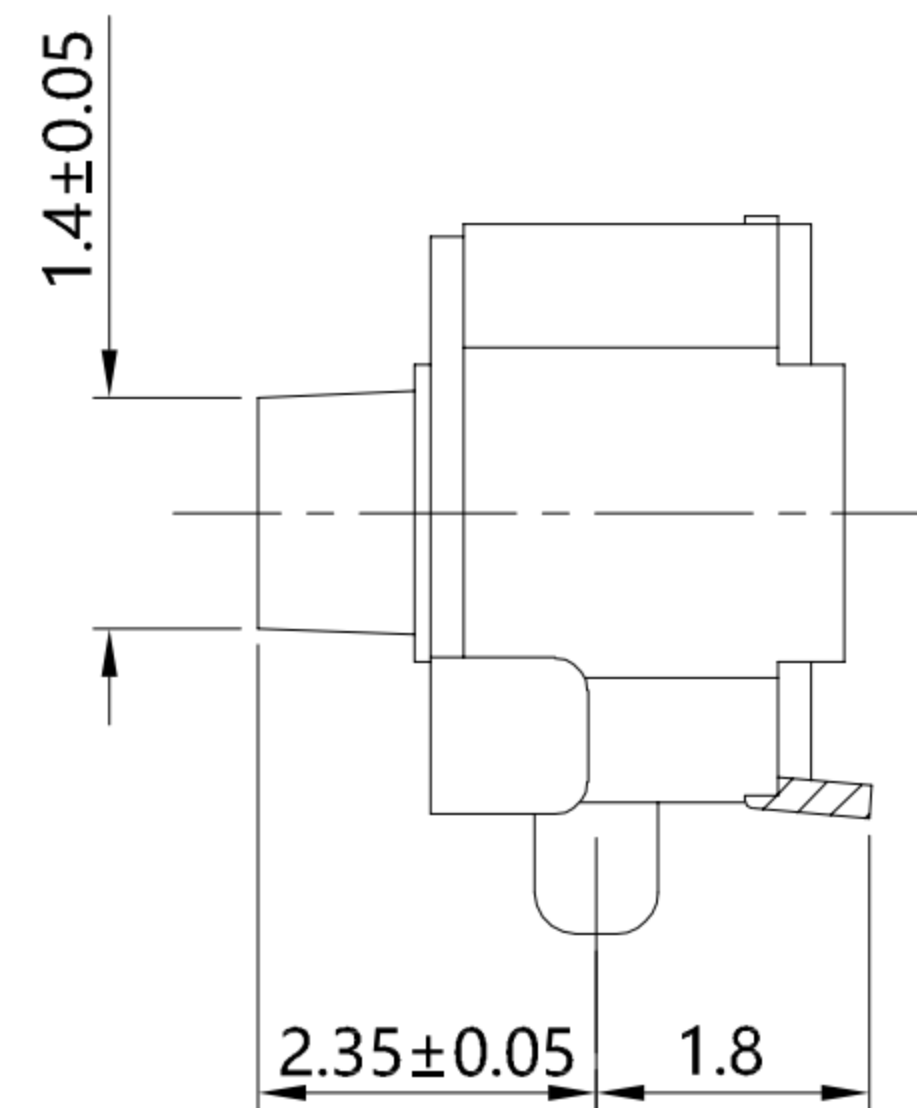
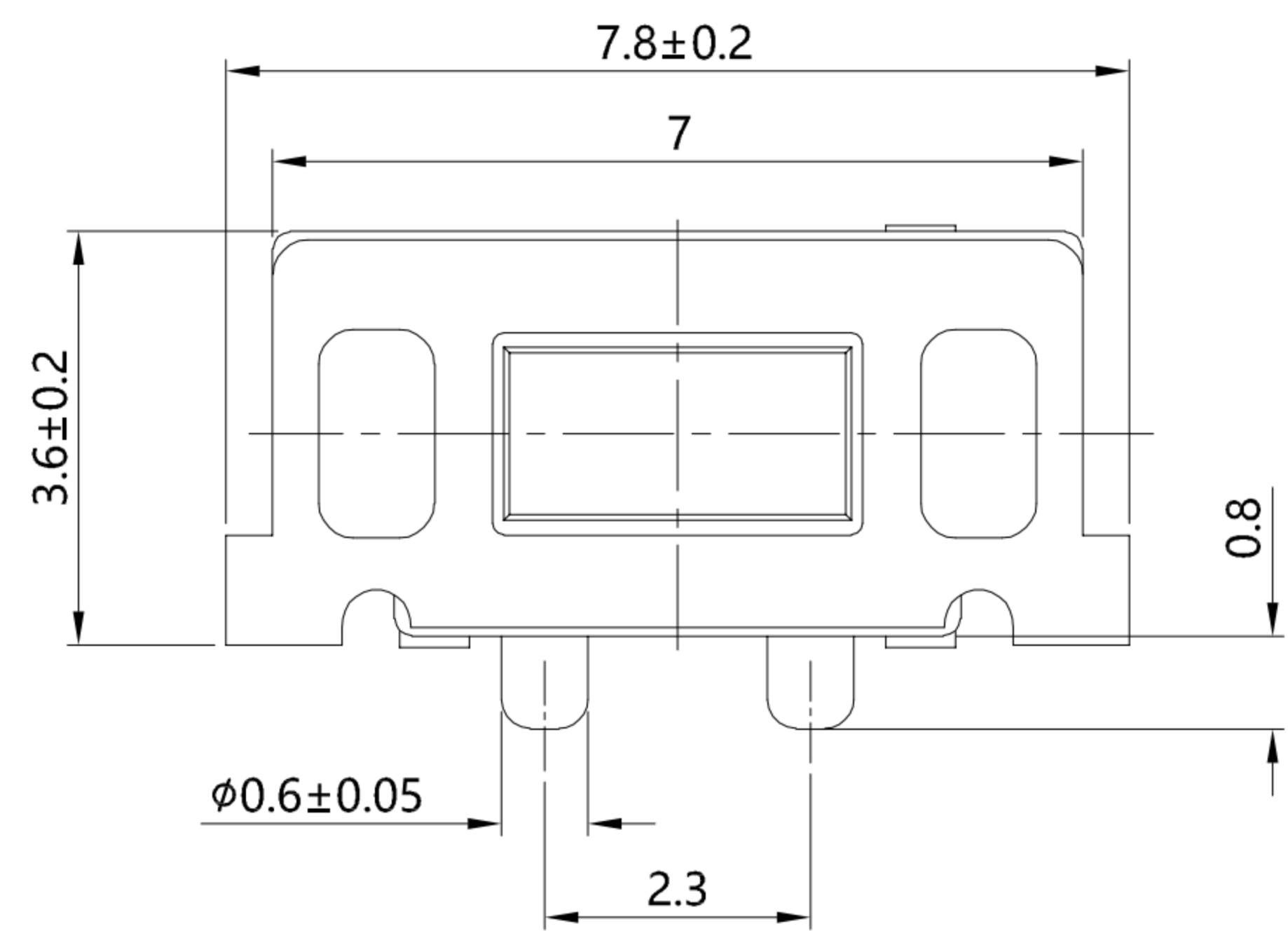


A B C D E



GT-TC054A-H038-L1

G-SWITCH

Operating Force

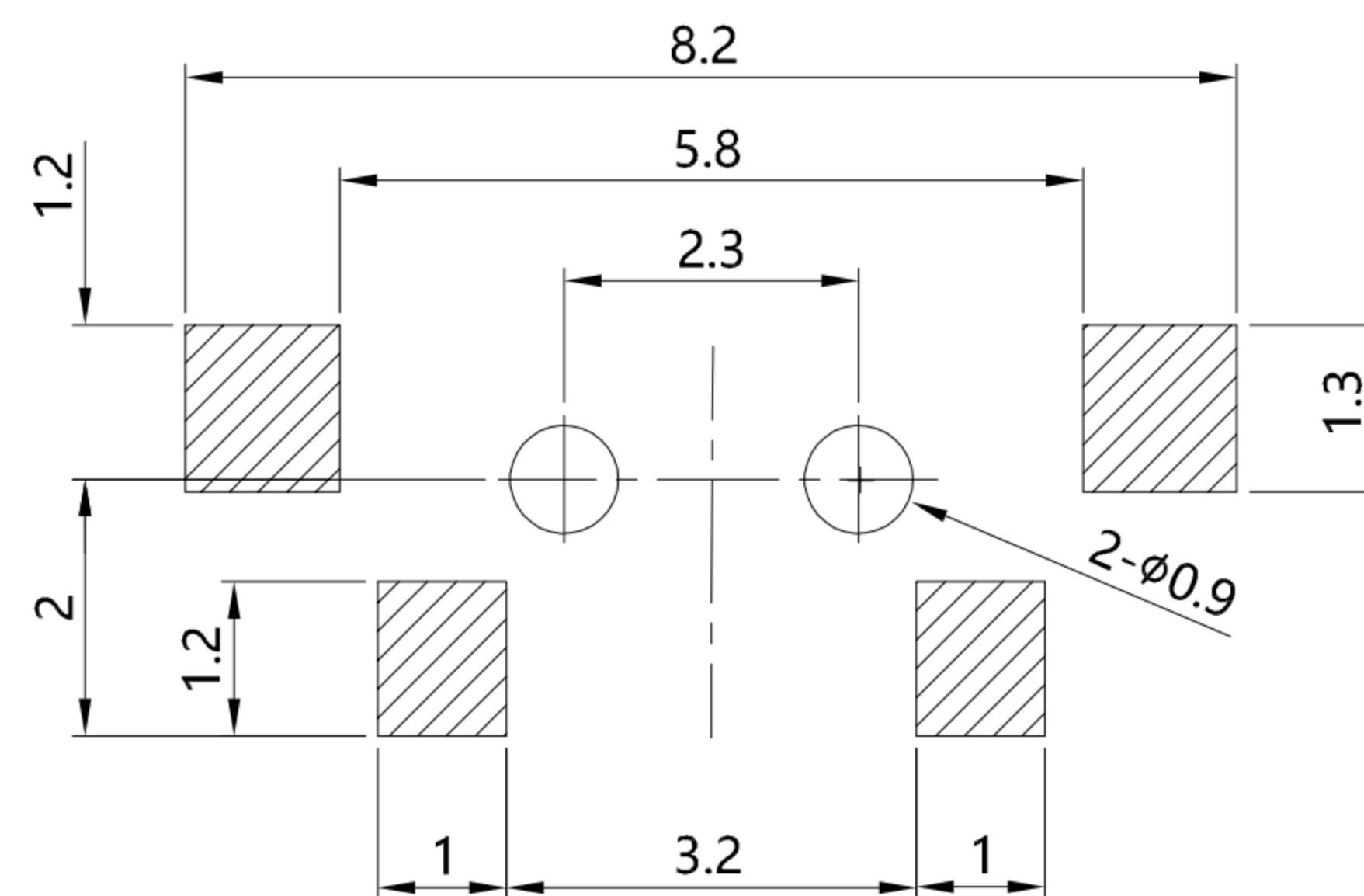
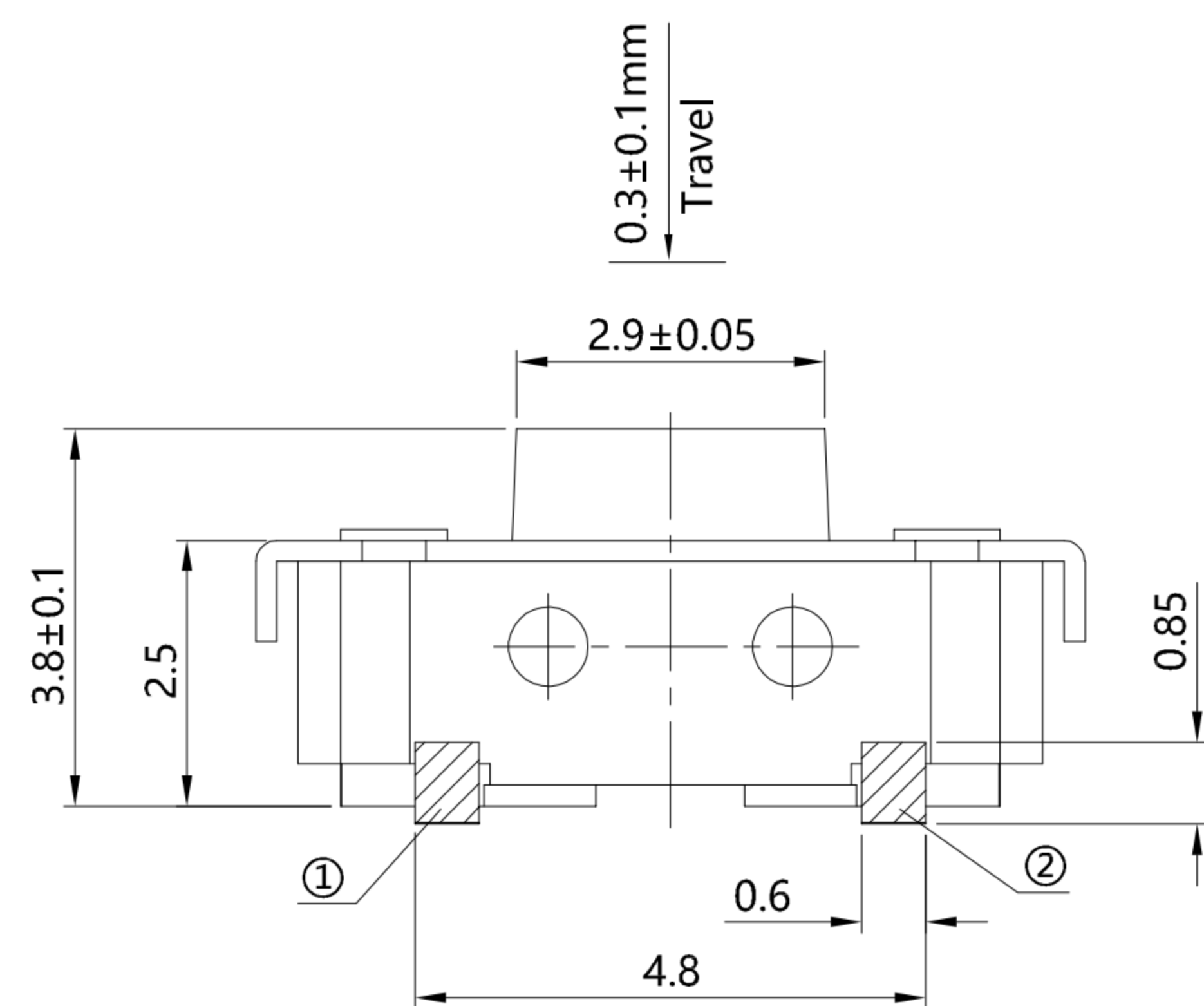
- A=160gf
- B=250gf
- C=130gf

Switch Height (mm)

- H035=3.5mm
- H038=3.8mm

Switch lifetime (Force)

- L05=50,000 Cycles
- L1=100,000 Cycles



P.C.B LAND DIMENSION



CIRCUIT DIAGRAM

G-Switch Specification:

1. Operating temperature range: -40°C ~ +85°C
2. Rating: 50mA, 12V DC
3. Insulation resistance: 100MΩ min. 100V DC
4. Dielectric strength: 250V AC for 1 min
5. Contact resistance: 100mΩ max.
6. Travel: 0.3±0.1mm

6	COVER	STAINLESS STEEL	
5	STEM	LCP-130i	BLACK
4	TAPE	POLYIMIDE	YELLOW (TRANSPARENT)
3	CONTACT	STAINLESS STEEL	Ag PLATING
2	TERMINAL	COPPER ALLOY	Ag PLATING
1	BASE	HIGH TEMPERATURE PLASTIC	BLACK
NO.	PART NAME	MATERIAL	REMARK



RoHS
Compliant
2002/95/EC



SCALE: 5:1 UNIT: mm
SIZE: A4

Unless otherwise
General Tolerance:
X. ±0.30
X.x ±0.20
X.xx ±0.15
X.xxx ±0.10
Angles ±3°

Title: Horizontal Side Push Tact Switch
SMT 7×3.6×3.8mm

Molde Code: GT-TC054A-H038-L1

DRAWN	CHECKED	APPROVED	DATE
Xia	Chen	Chen	2023.02.01



REV: A0 SHEET: 1/1

A B C D E