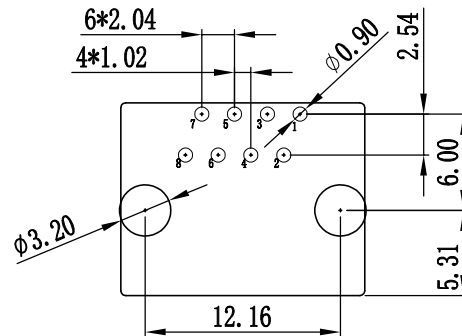
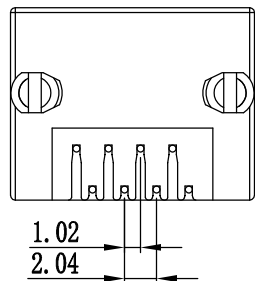
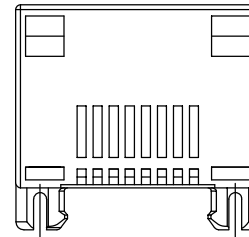
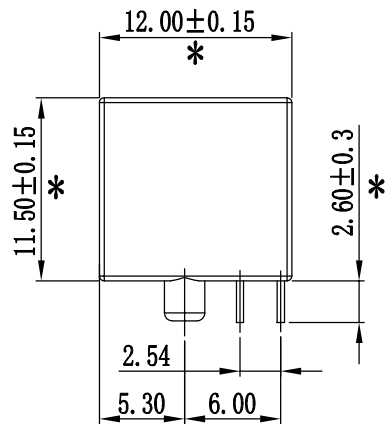
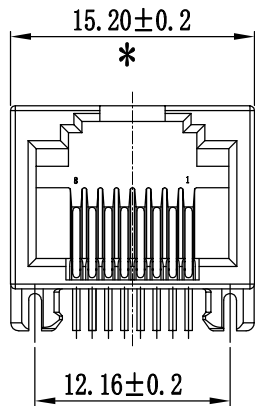
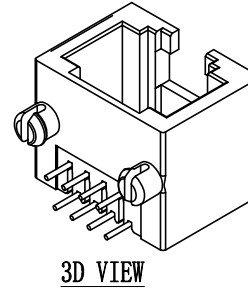
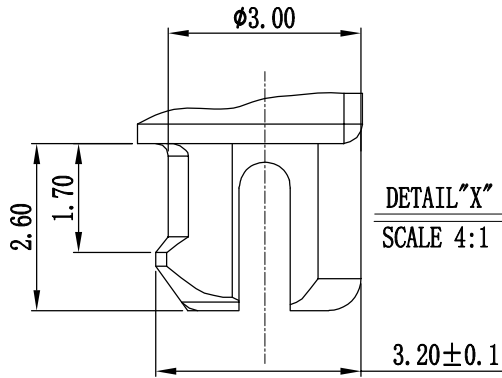
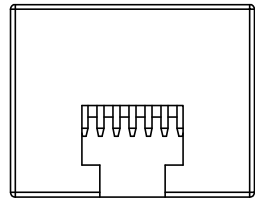


RoHS 2.0

REV.	ECN NO.	DESCRIPTION	DATE	DESIGN
A1.	/.	重新核对图面	21.01.08	LiHui
A2.	/.	重新核对图面	22.10.27	LZR



RECOMMENDED PCB LAYOUT
TOP VIEW (TOL: ±0.05)

NOTES:

- MATERIAL:
 - HOUSING: PBT ,COLOUR IS YELLOW 7405C;
 - CONTACT: PHOSPHOR BRONZE, $\phi 0.46 \pm 0.02 \text{mm}$;
- FINISH: PLATED GOLD OVER NI G/Fu";
- RECINNEBDED PCB THICKNESS: 1.60mm;
- ELECTRICAL:
 - VOLTAGE RATING: 125 VAC RMS;
 - CURRENT RATING: 1.5 AMP;
 - CONTACT RESISTANCE: 35MILLIOHMS MAX.;
 - WITHSTAND VOLTAGE: 1000 VAC RMS 50(60)Hz,1MIN.;
 - INSULATION RESISTANCE: 1000MEGOHMS MIN @500V DC;
- MECHANICAL:
 - MATING/UNMATING FORCE: 30N MAX.;
 - RETENTIION STRENGTH: 50N MIN.;
 - OPERATING LIFE: 750 CYCLES MIN.;
- SALT SPRAY TEST: 12H;
- SOLDERABILITY: $245 \pm 5^\circ \text{C}, 5 \pm 0.5 \text{S}$;
- RESISTANCE TO SOLDER: $260 \pm 5^\circ \text{C}, 10 \pm 1 \text{S}$;
- ENVIRONMENTAL:
 - STORAGE TEMPERATURE RANGE: $-40^\circ \text{C} \sim +85^\circ \text{C}$;
 - OPERATION TEMPERATURE RANGE: $-25^\circ \text{C} \sim +70^\circ \text{C}$;
- MATES WITH: MODULAR PLUGS THAT CONFORM TO FCC REGULATION PART 68.500;
- THE MARK WITH "*" IS THE KEY INSPECTION DIMENSION FOR QC.

B	端子	磷铜	镀镍 镀金(G/F)	
A	底座	PBT	黄色	
序号	品名	材质	电镀/颜色	备注

深圳市虹成电子有限公司

UNLESS OTHERWISE GENERAL TOLERANCE:		NAME:		P/N:	
X.xxx	±0.10	迷你RJ45-单口 (12.16中心距)		HC-WK88-MIH12-Y	
X.xx	±0.20	DWG NO.:			
X.x	±0.30	THIRD ANGLE PROJECTION		UNIT:	SCALE:
ANGULAR:		DRAWN:		mm	1:1
X.xx°	±1°	CHECKED:		SIZE:	SHEET:
X.x°	±3°	APPROVED		A4	1/1
X.°	±5°			REV.:	A1