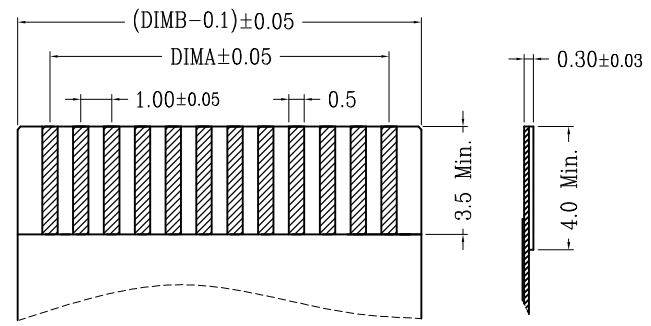
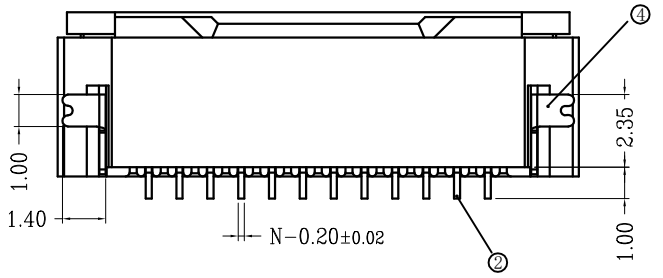
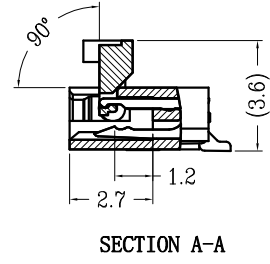
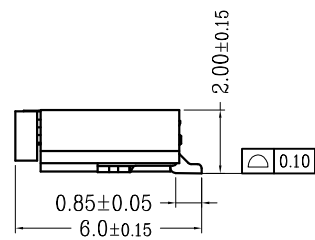
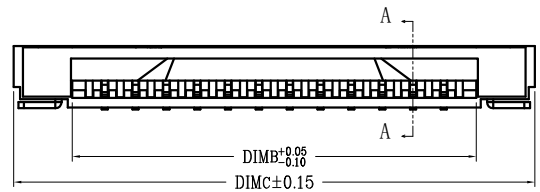
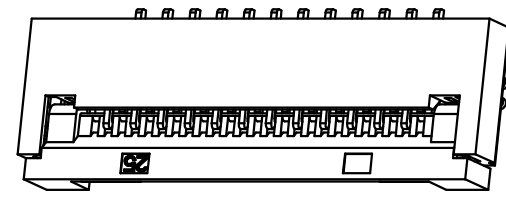
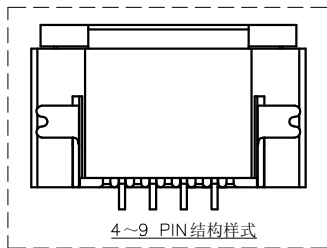
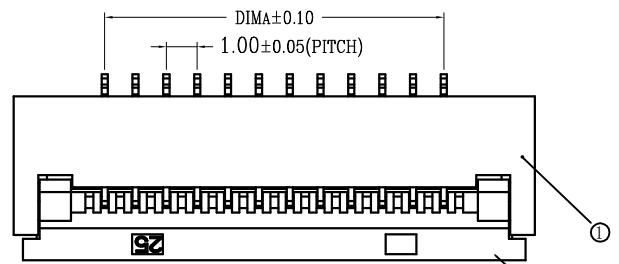


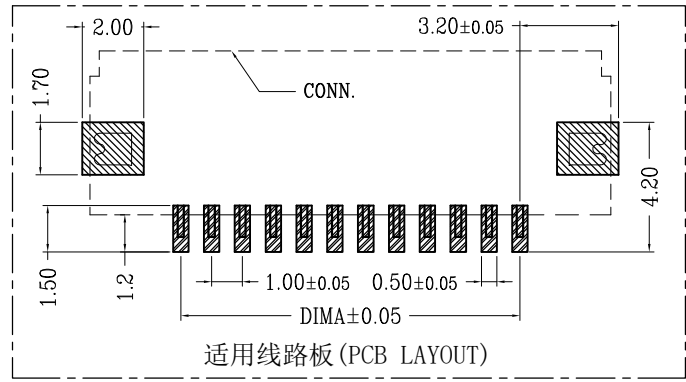
版次	变更摘要	日期
0	新产品发行	2015/1/28

序号	品名	材质
①	0.5mm盖胶芯 (H2.0)	LCP UL94V-0 本色
②	0.5mm盖端子 (H2.0)	铜合金/表面镀锡
③	0.5mm盖后盖 (H2.0)	LCP UL94V-0 黑色
④	0.5mm盖焊片 (H2.0)	铜合金/表面镀锡



CKT	DIMA	DIMB	DIMC
2	1.00	3.10	6.90
3	2.00	4.10	7.90
4	3.00	5.10	8.90
5	4.00	6.10	9.90
6	5.00	7.10	10.90
7	6.00	8.10	11.90
8	7.00	9.10	12.90
9	8.00	10.10	13.90
10	9.00	11.10	14.90
11	10.00	12.10	15.90
12	11.00	13.10	16.90
13	12.00	14.10	17.90
14	13.00	15.10	18.90
15	14.00	16.10	19.90
16	15.00	17.10	20.90
17	16.00	18.10	21.90
18	17.00	19.10	22.90
19	18.00	20.10	23.90
20	19.00	21.10	24.90
21	20.00	22.10	25.90
22	21.00	23.10	26.90
23	22.00	24.10	27.90
24	23.00	25.10	28.90
25	24.00	26.10	29.90
26	25.00	27.10	30.90
27	26.00	28.10	31.90
28	27.00	29.10	32.90
29	28.00	30.10	33.90

- 技术指标:
- 塑件表面应光洁、无毛边、无明显收缩、缺陷、裂纹等现象。
 - 温度范围: -25°C ~ 85°C.
 - 额定电压: 50V, AC/DC(等效).
 - 接触电阻: ≤0.03Ω.
 - 绝缘电阻: ≥500MΩ



兆星精密电子 (深圳) 有限公司

品名 (TITLE): 1.0间距 2.0高度 前翻盖式 镀锡

料号 (DWG.NO): ZX-1.0FPC-2H-QFX11P

比例 (SCALE): 1:1

单位 (UNITS): mm

制图 (DR):

校对 (CHKD):

审核 (APPD):

张数 (SHEET): 1 OF 1

尺寸 (SIZE): A4

版本 (REV): A

一般公差 (TOLERANCE)

X ±0.50	.XX ±10
X ±0.20	.XXX ±05
ANGLES	±1°