

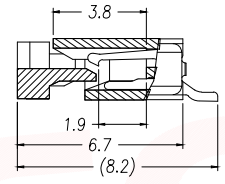
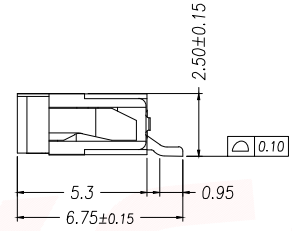
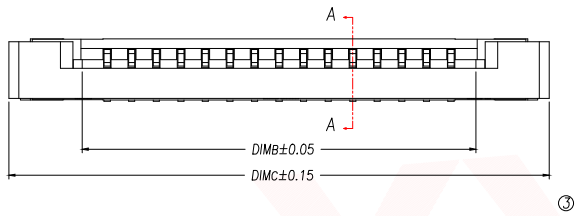
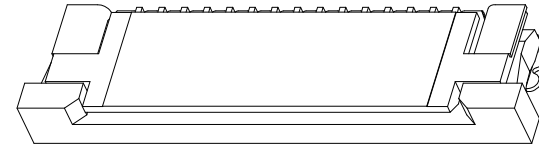
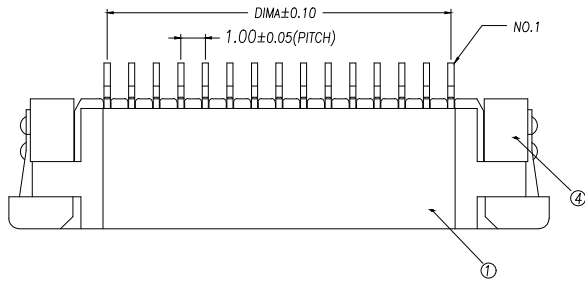
REV.	Q'TY	ECN. NO.	APR.	DATE

序号	品名	材质
1	1.0插拔卧式上接胶芯(H2.5)	LCP UL94V-0 本色
2	1.0插拔卧式上接端子(H2.5)	铜合金/表面镀锡
3	1.0插拔卧式上接后盖(H2.5)	LCP UL94V-0 黑色
4	1.0插拔卧式上接焊片(H2.5)	铜合金/表面镀锡

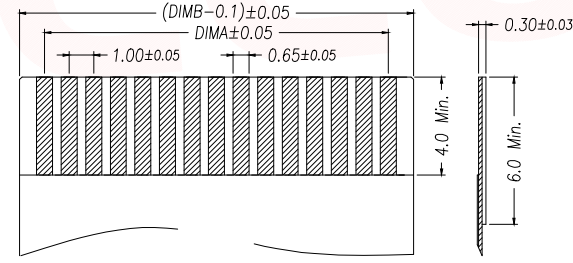
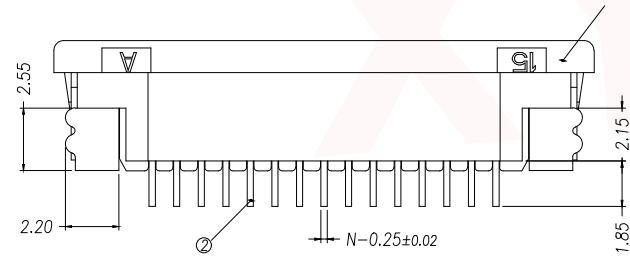
技术指标(Technical Index):

- 塑件表面应光洁、无毛边、无明显收缩、缺陷、裂纹等现象。  
(The surface of the plastic parts should be smooth, no rough edges, no obvious shrinkage, defects, cracks and other phenomena.)
- 温度范围(Temperature range): -25°C~+85°C.
- 额定电压(Rated voltage): 50V, AC/DC(=等效).
- 接触电阻(Contact resistance): ≤0.03Ω.
- 绝缘电阻(Insulation resistance): ≥500MΩ.

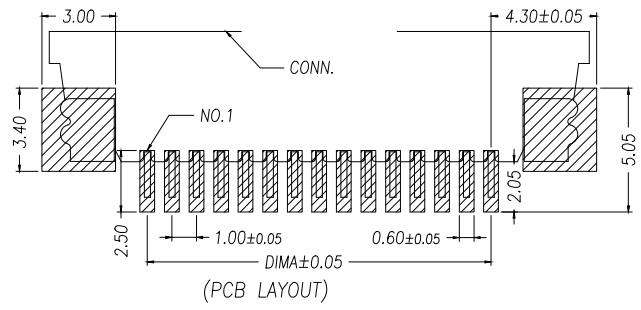
Part No	Pin	DIMA	DIMB	DIMC
FPC10-S1.0-4AH2.5	4	3.00	5.03	11.10
FPC10-S1.0-5AH2.5	5	4.00	6.03	12.10
FPC10-S1.0-6AH2.5	6	5.00	7.03	13.10
FPC10-S1.0-7AH2.5	7	6.00	8.03	14.10
FPC10-S1.0-8AH2.5	8	7.00	9.03	15.10
FPC10-S1.0-9AH2.5	9	8.00	10.03	16.10
FPC10-S1.0-10AH2.5	10	9.00	11.03	17.10
FPC10-S1.0-11AH2.5	11	10.00	12.03	18.10
FPC10-S1.0-12AH2.5	12	11.00	13.03	19.10
.....	....	...	.....	.....
FPC10-S1.0-40AH2.5	40	(40-1)*1.0	(40+1)*1.0+0.03	(40+7)*1.0+0.10



SECTION A-A



适用扁平线(Applicable Flat Cable)



(PCB LAYOUT)

DIMENSION IN mm	
TOLERANCE UNLESS OTHERWISE SPECIFIED	
.X±0.35	X.*±5°
.XX±0.25	.X.*±3°
.XXX±0.15	.XX.*±1°

**厦门市辛译精密电子有限公司**  
**Xiamen XinYi Xyecom Electronics Co.,Ltd**

APR. Alex	TITLE: 1.0 Pitch 插拔式上接 H2.5
CHK. Jack	DWG NO. FPC10-S1.0-NAH2.5
DRA. Can	PROJ.  CUSTOMER DRAWING
SIZE A4	SCALE 1:1 SHEET 1/1 REV. A