

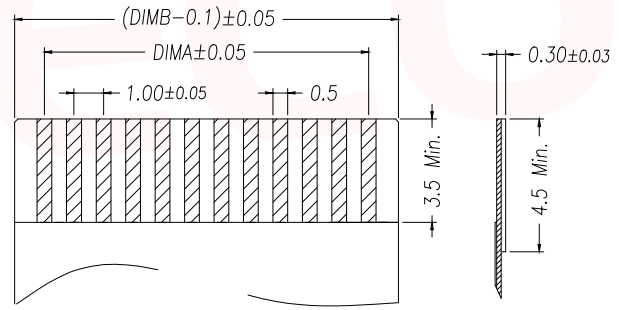
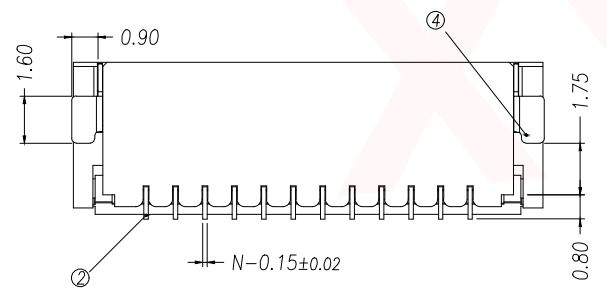
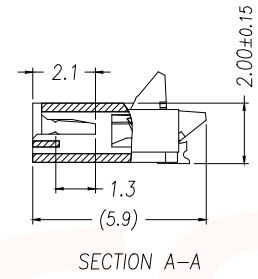
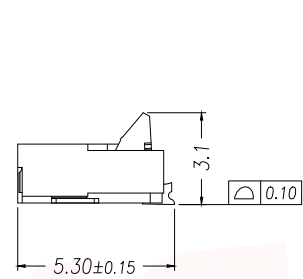
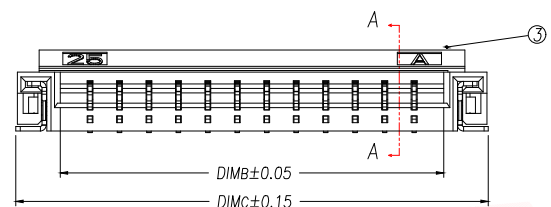
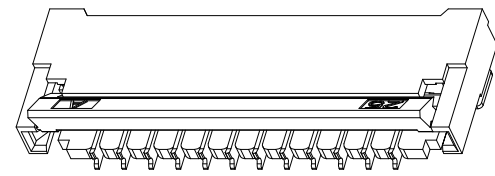
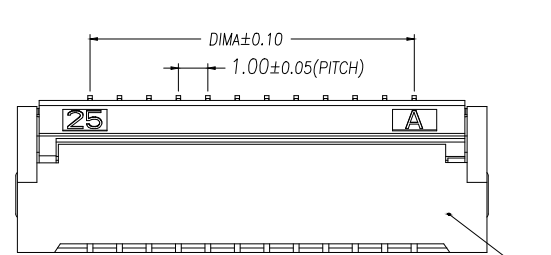
REV.	Q'TY	ECN. NO.	APR.	DATE

序号	品名	材质
1	1.0后翻卧式双面接胶芯(H2.0)	LCP UL94V-0 本色
2	1.0后翻卧式双面接端子(H2.0)	铜合金/表面镀金
3	1.0后翻卧式双面接后盖(H2.0)	LCP UL94V-0 黑色
4	1.0后翻卧式双面接焊片(H2.0)	铜合金/表面镀锡

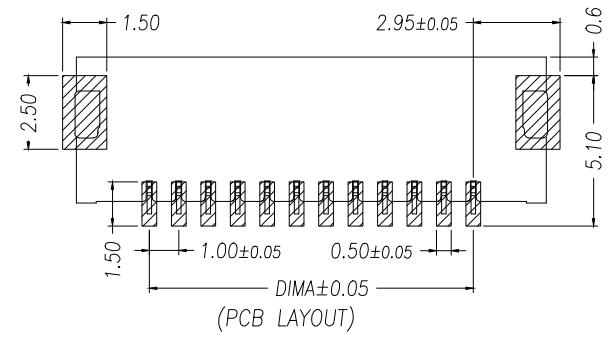
技术指标:

1. 塑件表面应光洁、无毛边、无明显收缩、缺陷、裂纹等现象。
2. 温度范围：-25°C~85°C。
3. 额定电压：50V，AC/DC(等效)。
4. 接触电阻：≤0.03Ω。
5. 绝缘电阻：≥500MΩ

Part No	Pin	DIMA	DIMB	DIMC
FPC08-H1.0-4AH2.0	4	3.00	5.02	8.04
FPC08-H1.0-5AH2.0	5	4.00	6.02	9.04
FPC08-H1.0-6AH2.0	6	5.00	7.02	10.04
FPC08-H1.0-7AH2.0	7	6.00	8.02	11.04
FPC08-H1.0-8AH2.0	8	7.00	9.02	12.04
FPC08-H1.0-9AH2.0	9	8.00	10.02	13.04
FPC08-H1.0-10AH2.0	10	9.00	11.02	14.04
FPC08-H1.0-11AH2.0	11	10.00	12.02	15.04
FPC08-H1.0-12AH2.0	12	11.00	13.02	16.04
.....
FPC08-H1.0-30AH2.0	30	(30-1)*1.0	(30+1)*1.0+0.02	(30+4)*1.0+0.04



适用扁平线(Applicable Flat Cable)



DIMENSION IN mm		厦门市辛译精密电子有限公司 Xiamen XinYi Xyecomm Electronics Co.,Ltd			
TOLERANCE UNLESS OTHERWISE SPECIFIED		APR.	Alex	TITLE: 1.0 Pitch 后翻卧式双面接 H2.0	
.X ± 0.35	.X* ± 5'	CHK.	Jack	DWG NO. FPC08-H1.0-NAH2.0	
.XX ± 0.25	.X* ± 3'	DRA.	Can	PROJ. CUSTOMER DRAWING	
.XXX ± 0.15	.XX* ± 1'	SIZE	A4	SCALE	1:1
			SHEET	1/1	REV. A