

UMAX7612401
SFP+ CAGE

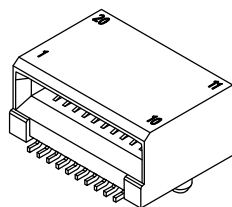
MATERIAL (RoHS COMPLIANCE):

CAGE:
COPPER ALLOY

PLATING OPTION:
100 μ " [2.54 μ m] MIN. NICKEL
PLATING (NOT FOR SOLDER PINS).

PACKAGING:
TRAY PACKAGING.

TEMPERATURE RANGE:
-40°C TO +85°C

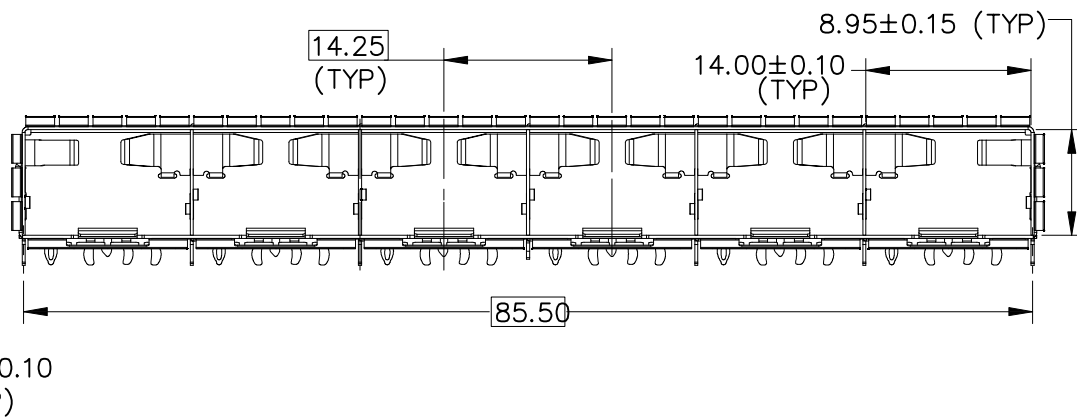
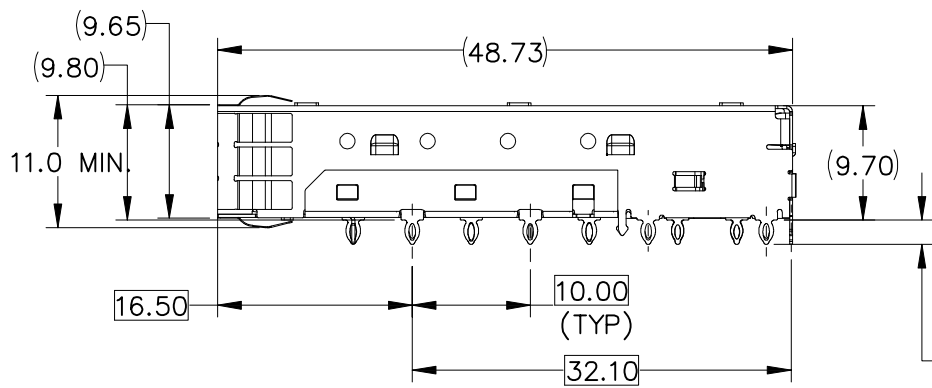
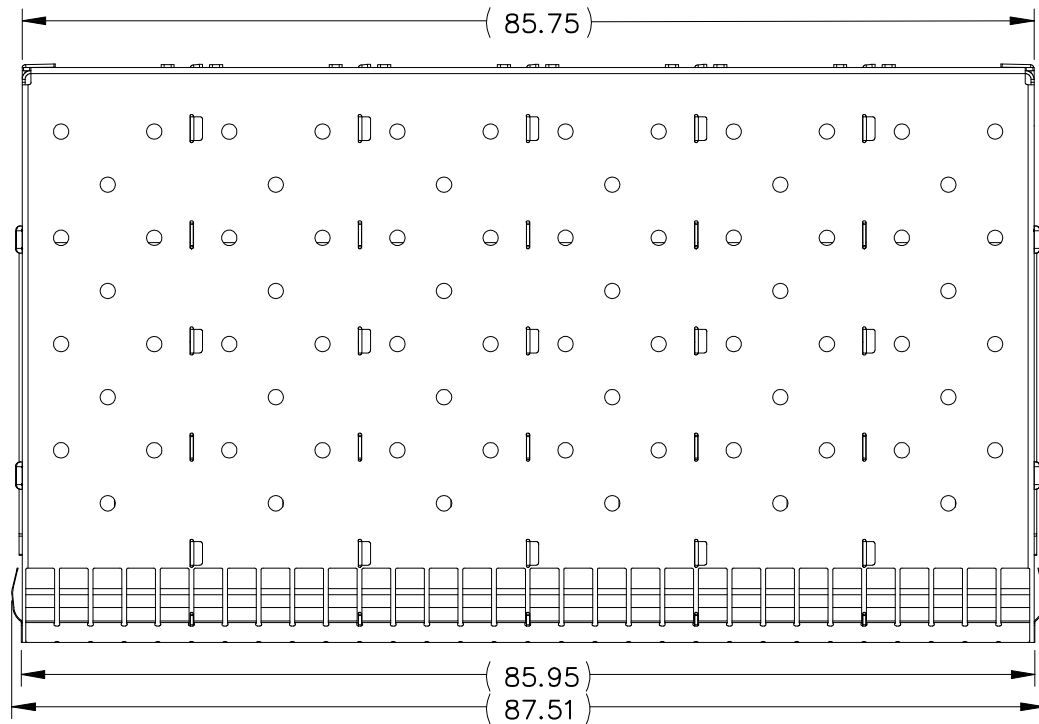
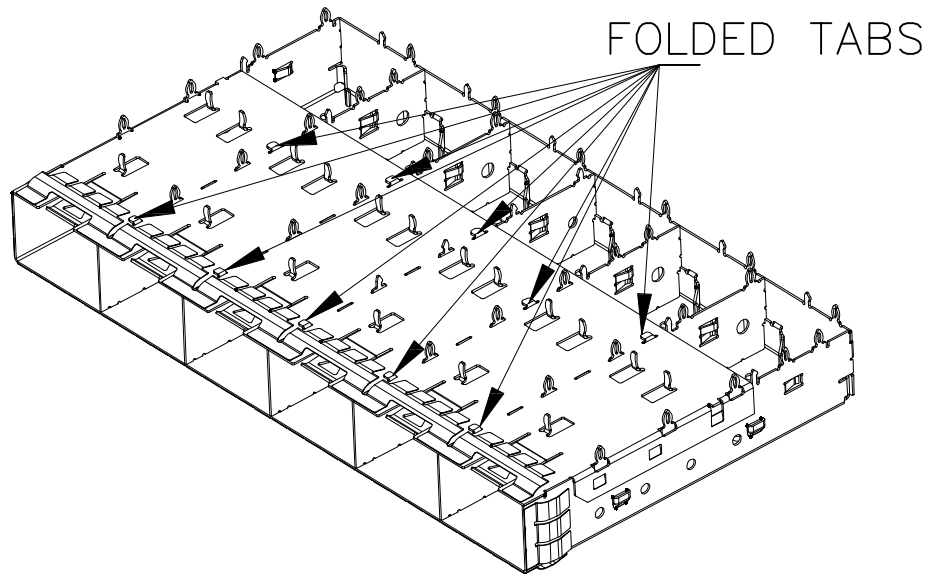


M42F-08P-020-P002G
SFP+ CONNECTOR

TOLERANCE		UMax 东莞市友贸实业有限公司 conn DONGGUAN UMAX ENTERPRISE LIMITED
LINEAR	ANGLES	
X \pm 0.40	X $^{\circ}$ \pm 3 $^{\circ}$	APPD: Jason MAT'L: CHKD: Schumi FINISH:
.X \pm 0.30	.X $^{\circ}$ \pm	
.XX \pm 0.20	.XX $^{\circ}$ \pm	DRWN: Lei Songping Q'TY:
.XXX \pm 0.10	.XXX $^{\circ}$ \pm	

TITLE: SFP+ CAGE 1x6 NICKEL PLATING Through Hole - Press-Fit			
PART NO. UMAX7612401		DWG NO. C-UMAX7D00116	
	UNITS	SCALE	SHEET
	MM	1 : 1	1 OF 6
REV	ECN NO.	NAME	DATE
			0

REV	ECN NO.	NAME	DATE



TOLERANCE	
LINEAR	ANGLES
X±0.40	X°± 3°
.X±0.30	.X°±
.XX±0.20	.XX°±
.XXX±0.10	.XXX°±

UMax conn 东莞市友贸实业有限公司
DONGGUAN UMAX ENTERPRISE LIMITED

TITLE: SFP+ CAGE 1x6
NICKEL PLATING
Through Hole - Press-Fit

PART NO. UMAX7612401

DWG NO. C-UMAX7D00116

APPD: Jason

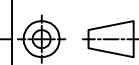
MAT'L:

CHKD: Schumi

FINISH:

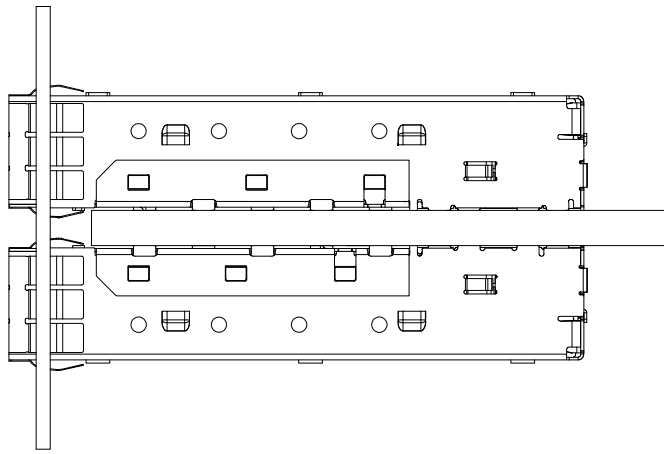
DRWN: Lei Songping

Q'TY:

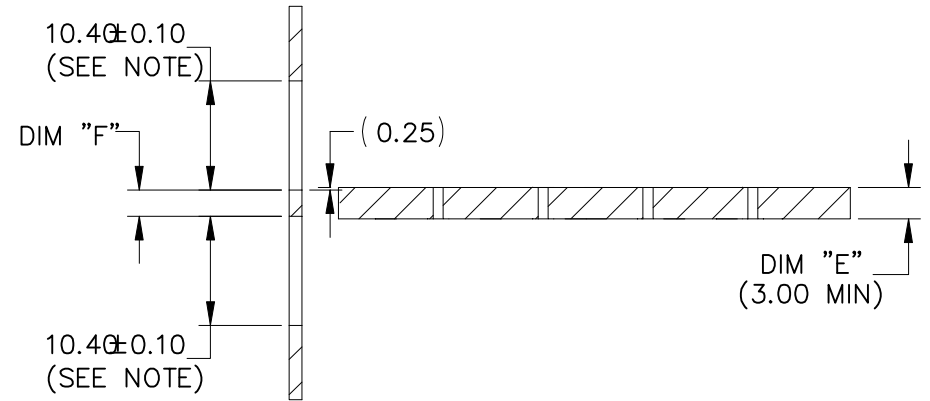
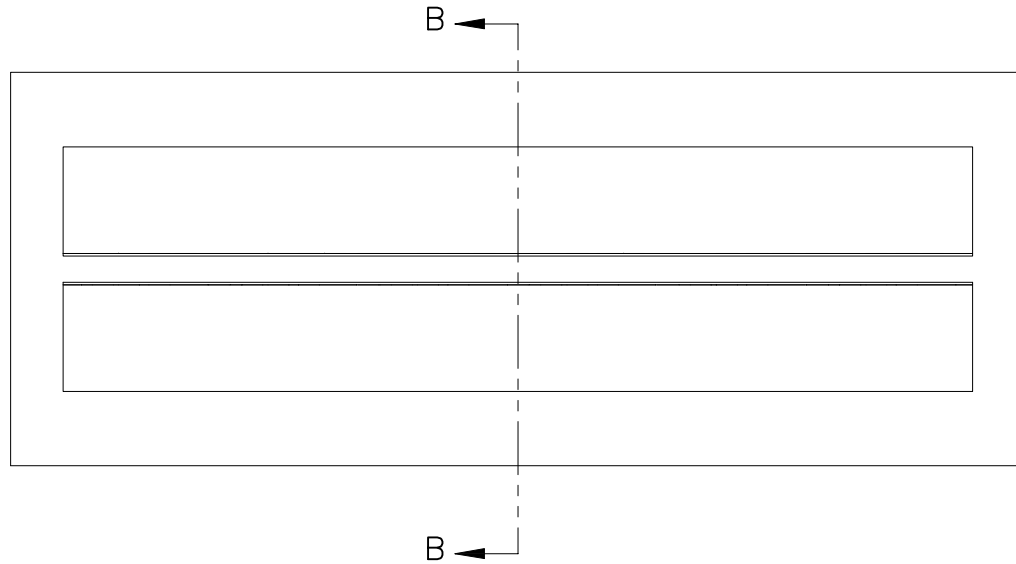


UNITS	SCALE	SHEET	REV
MM	1 : 1	2 OF 6	0

REV	ECN NO.	NAME	DATE



NOTE:
 PANEL CUTOUT SIZES PER SFF 8433 SPEC. FOR BELLY TO BELLY MOUNTING, DIM "E" (PCB THICKNESS) IS 3.0 mm MIN. DIM "F" RELATED TO DIM "E". FOR DIM "F" = DIM "E" - 0.44 mm. THE PANEL CUTOUT 10.40 mm MIGHT BE INCREASED UP TO 10.80 mm IN ORDER TO ACCOMODATE PCB TOLERANCE.



SECTION B-B
 SCALE 4 : 3

RECOMMENDED BEZEL DESIGN
 (BELLY TO BELLY CAGE MOUNTING)

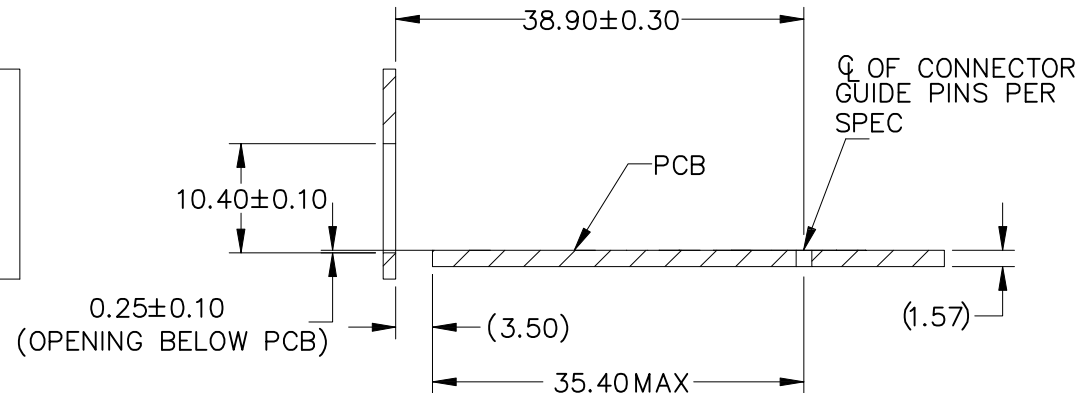
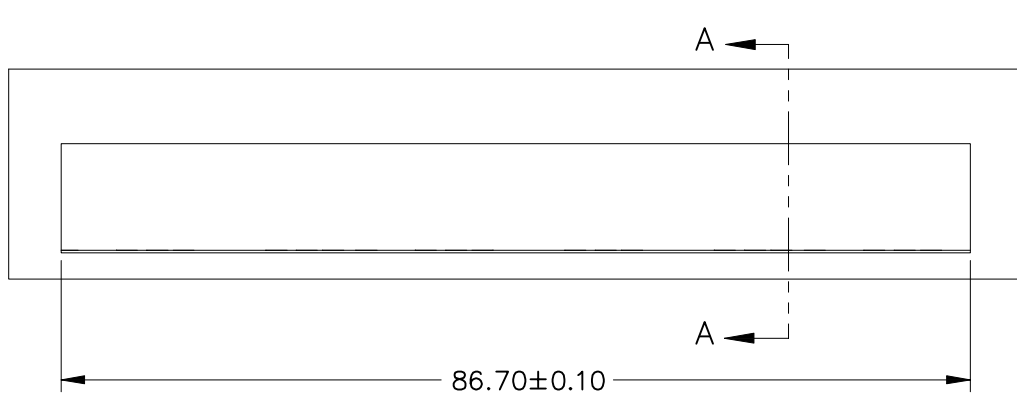
REV	ECN NO.	NAME	DATE

TOLERANCE	
LINEAR	ANGLES
X±0.40	X°± 3°
.X±0.30	.X°±
.XX±0.20	.XX°±
.XXX±0.10	.XXX°±

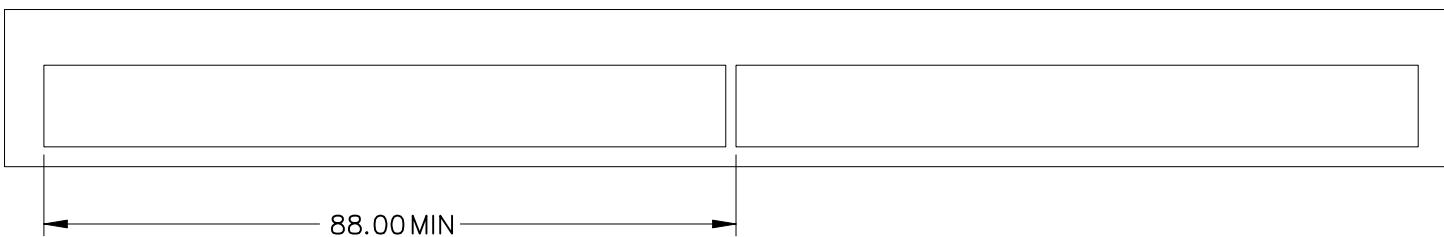
UMax conn 东莞市友贸实业有限公司
 DONGGUAN UMAX ENTERPRISE LIMITED

APPD: Jason MAT'L:
 CHKD: Schumi FINISH:
 DRWN: Lei Songping Q'TY:

TITLE: SFP+ CAGE 1x6 NICKEL PLATING Through Hole - Press-Fit			
PART NO. UMAX7612401		DWG NO. C-UMAX7D00116	
UNITS	SCALE	SHEET	REV
	MM	1 : 1	3 OF 6



SECTION A-A
SCALE 4 : 3



RECOMMENDED BEZEL DESIGN
(SINGLE SIDE CAGE MOUNTING)

REV	ECN NO.	NAME	DATE

TOLERANCE	
LINEAR	ANGLES
X±0.40	X°± 3°
.X±0.30	.X°±
.XX±0.20	.XX°±
.XXX±0.10	.XXX°±

UMax 东莞市友贸实业有限公司
conn DONGGUAN UMAX ENTERPRISE LIMITED

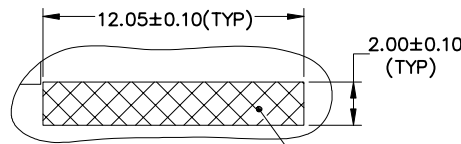
APPD: Jason MAT'L:
CHKD: Schumi FINISH:
DRWN: Lei Songping Q'TY:

TITLE: SFP+ CAGE 1x6
NICKEL PLATING
Through Hole - Press-Fit

PART NO. UMAX7612401

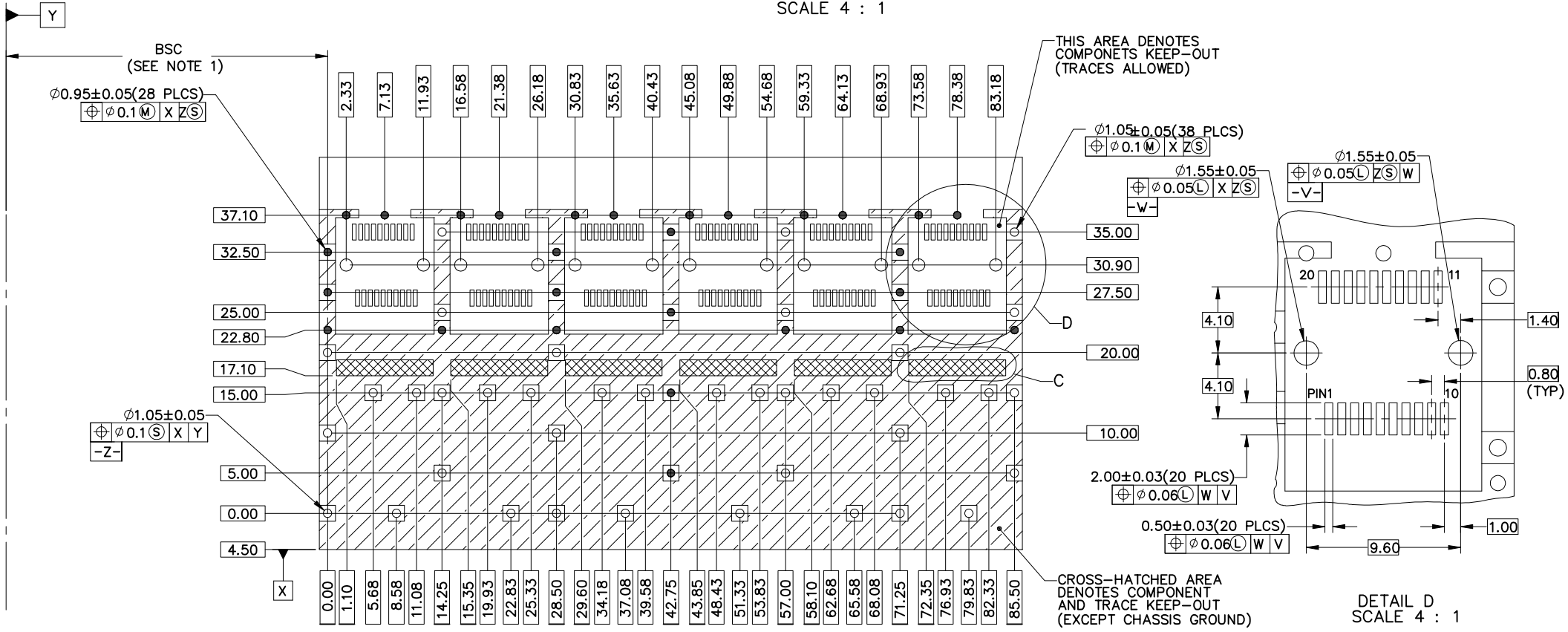
DWG NO. C-UMAX7D00116

UNITS	SCALE	SHEET	REV
MM	1 : 1	4 OF 6	0



DETAIL C
SCALE 4 : 1

PATTERN REPEATS FOR EACH PORT.
SPACING BETWEEN PORTS IS 14.25mm.
APPLIES TO ALL GANGED LAYOUTS



THIS AREA DENOTES
COMPONENTS KEEP-OUT
(TRACES ALLOWED)

CROSS-HATCHED AREA
DENOTES COMPONENT
AND TRACE KEEP-OUT
(EXCEPT CHASSIS GROUND)

DETAIL D
SCALE 4 : 1

RECOMMENDED PCB DESIGN
FOR SINGLE SIDE MOUNTING

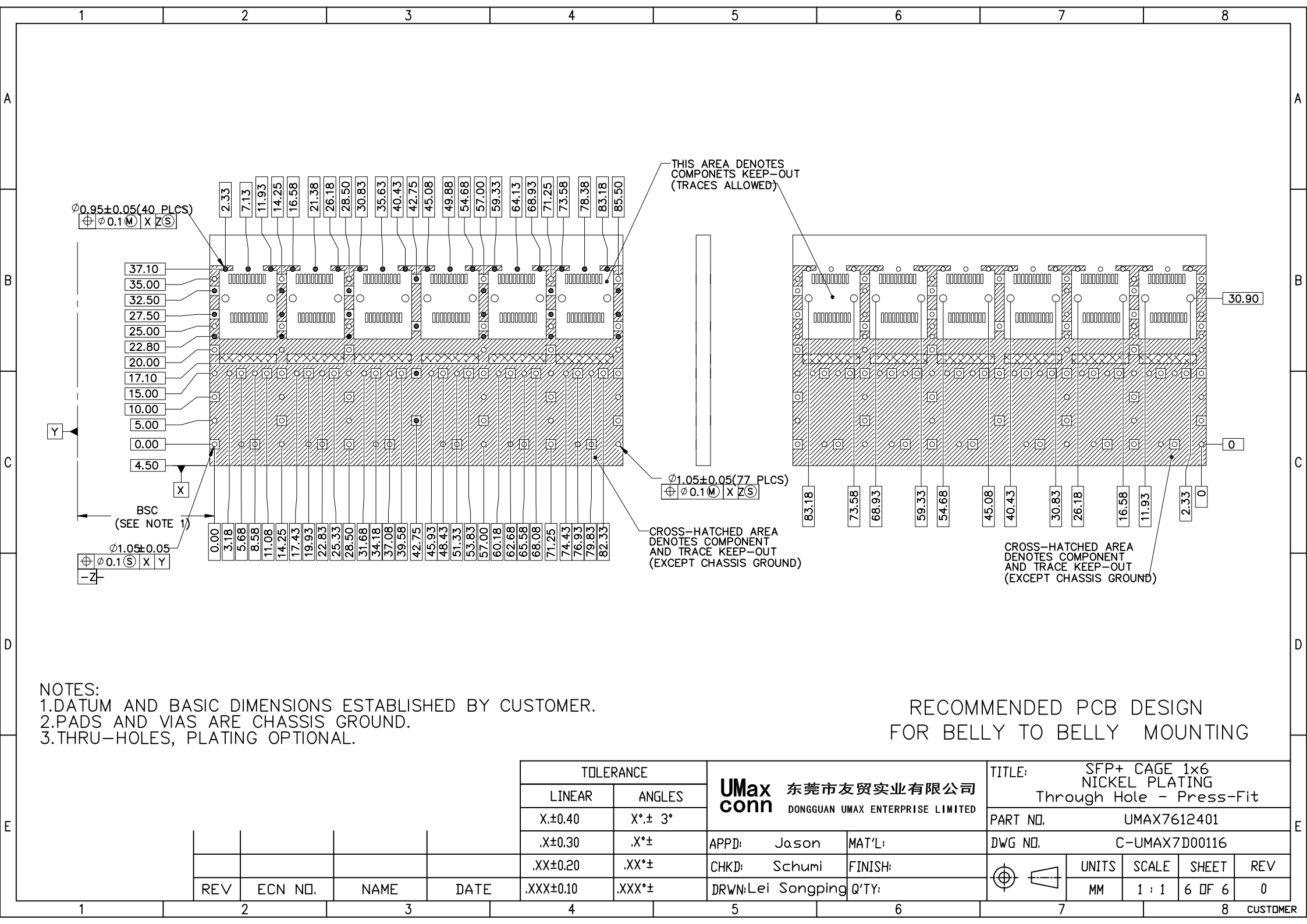
REV	ECN NO.	NAME	DATE

TOLERANCE	
LINEAR	ANGLES
X ± 0.40	X° ± 3°
.X ± 0.30	.X° ±
.XX ± 0.20	.XX° ±
.XXX ± 0.10	.XXX° ±

UMax conn 东莞市友贸实业有限公司
DONGGUAN UMAX ENTERPRISE LIMITED

APPD: Jason MAT'L:
CHKD: Schumi FINISH:
DRWN: Lei Songping Q'TY:

TITLE: SFP+ CAGE 1x6 NICKEL PLATING Through Hole - Press-Fit			
PART NO.	UMAX7612401		
DWG NO.	C-UMAX7D00116		
UNITS	SCALE	SHEET	REV
MM	1 : 1	5 OF 6	0



$\phi 0.95 \pm 0.05$ (40 PLCS)
 $\oplus \phi 0.1 \text{ (M)} \text{ X Z (S)}$

$\phi 1.05 \pm 0.05$
 $\oplus \phi 0.1 \text{ (S)} \text{ X Y}$
 $-Z-$

THIS AREA DENOTES
 COMPONENTS KEEP-OUT
 (TRACES ALLOWED)

$\phi 1.05 \pm 0.05$ (77 PLCS)
 $\oplus \phi 0.1 \text{ (M)} \text{ X Z (S)}$

CROSS-HATCHED AREA
 DENOTES COMPONENT
 AND TRACE KEEP-OUT
 (EXCEPT CHASSIS GROUND)

CROSS-HATCHED AREA
 DENOTES COMPONENT
 AND TRACE KEEP-OUT
 (EXCEPT CHASSIS GROUND)

- NOTES:
 1. DATUM AND BASIC DIMENSIONS ESTABLISHED BY CUSTOMER.
 2. PADS AND VIAS ARE CHASSIS GROUND.
 3. THRU-HOLES, PLATING OPTIONAL.

RECOMMENDED PCB DESIGN
 FOR BELLY TO BELLY MOUNTING

TOLERANCE						TITLE: SFP+ CAGE 1x6 NICKEL PLATING Through Hole - Press-Fit	
LINEAR		ANGLES		UMax conn 东莞市友贸实业有限公司 DONGGUAN UMAX ENTERPRISE LIMITED		PART NO. UMAX7612401	
X \pm 0.40		X $^{\circ}$ \pm 3 $^{\circ}$				DWG NO. C-UMAX7D00116	
.X \pm 0.30		.X $^{\circ}$ \pm		APPD: Jason	MAT'L:		UNITS: MM SCALE: 1 : 1 SHEET: 6 OF 6 REV: 0
.XX \pm 0.20		.XX $^{\circ}$ \pm		CHKD: Schumi	FINISH:		
REV	ECN NO.	NAME	DATE	.XXX \pm 0.10	.XXX $^{\circ}$ \pm	DRWN: Lei Songping	Q'TY: