

UMAX7212401  
SFP+ CAGE

MATERIAL (RoHS COMPLIANCE):

CAGE:  
COPPER ALLOY

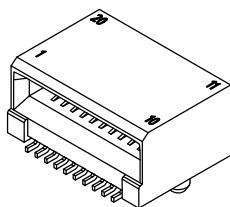
PLATING OPTION 1:  
100 $\mu$ " [2.54  $\mu$ m] MIN. TIN  
PLATING OVER 50  $\mu$ " (1.27  $\mu$ m)  
MIN. NICKEL UNDER PLATING.

PLATING OPTION 2:  
100 $\mu$ " [2.54  $\mu$ m] MIN. NICKEL  
PLATING (NOT FOR SOLDER PINS).

DUST COVER  
THERMOPLASTIC, COLOR BLACK.

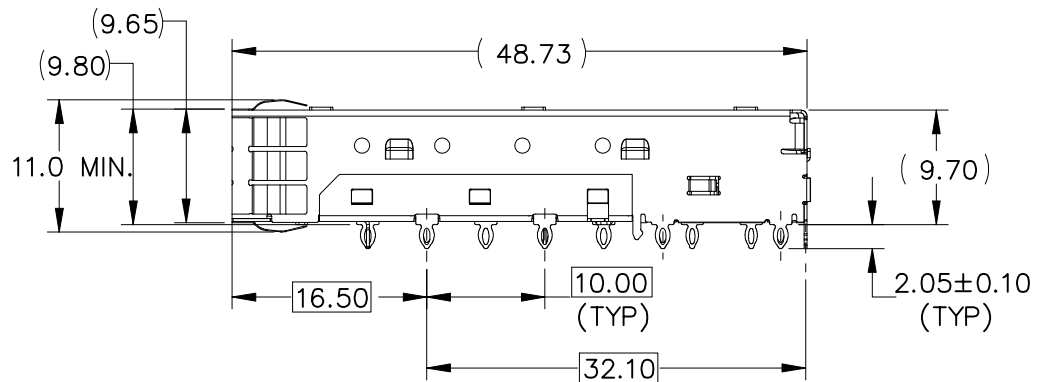
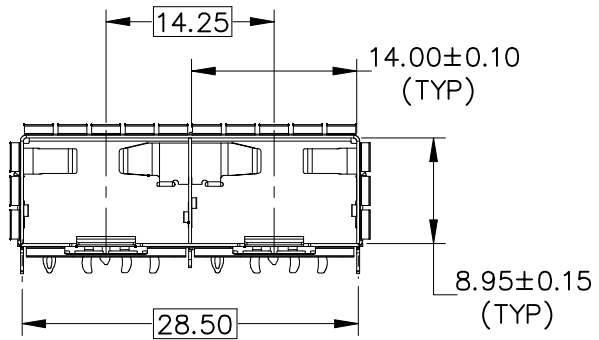
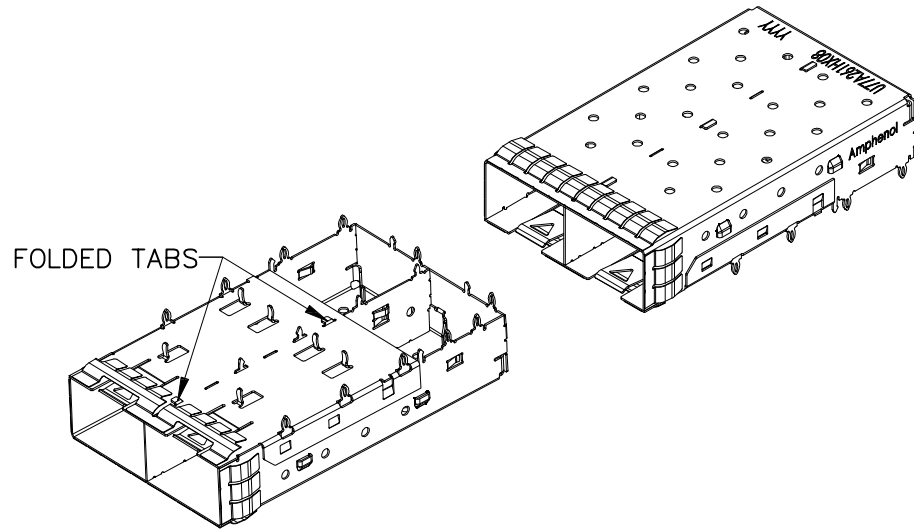
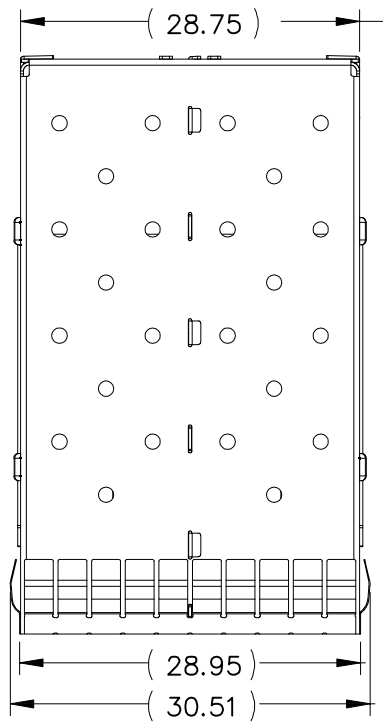
PACKAGING:  
TAPE AND REEL OR TRAY PACKAGING.

TEMPERATURE RANGE:  
-40°C TO +85°C



M42F-08P-020-P002G  
SFP+ CONNECTOR

TOLERANCE		UMax conn 东莞市友贸实业有限公司 DONGGUAN UMAX ENTERPRISE LIMITED	TITLE: SFP+ CAGE 1x2 NICKEL PLATING Through Hole - Press-Fit			
LINEAR	ANGLES		PART NO. UMAX7212401			
X $\pm$ 0.40	X' $\pm$ 3°	APPD: Jason	MAT'L:			DWG NO. C-UMAX7D01117
.X $\pm$ 0.30	.X' $\pm$	CHKD: Schumi	FINISH:			
.XX $\pm$ 0.20	.XX' $\pm$	DRWN: Lei Songping	Q'TY:			
.XXX $\pm$ 0.10	.XXX' $\pm$					
REV	ECN NO.	NAME	DATE			UNITS: MM SCALE: 1 : 1 SHEET: 1 OF 6 REV: 0



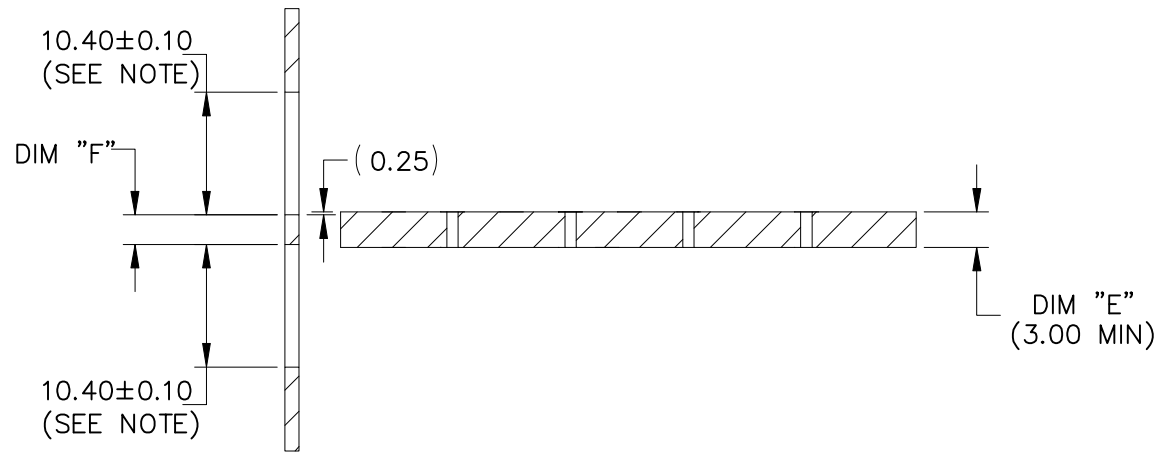
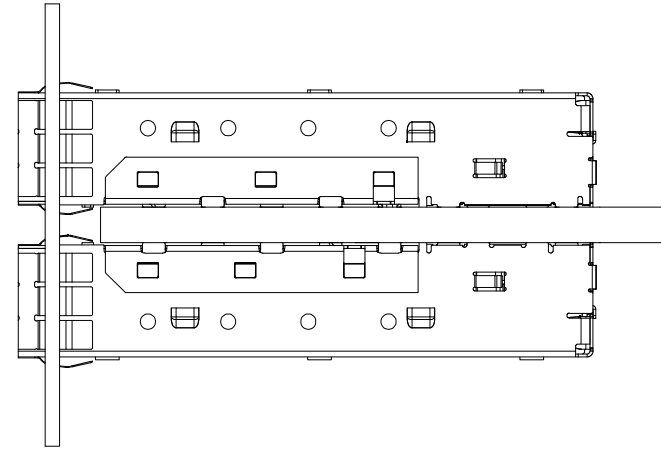
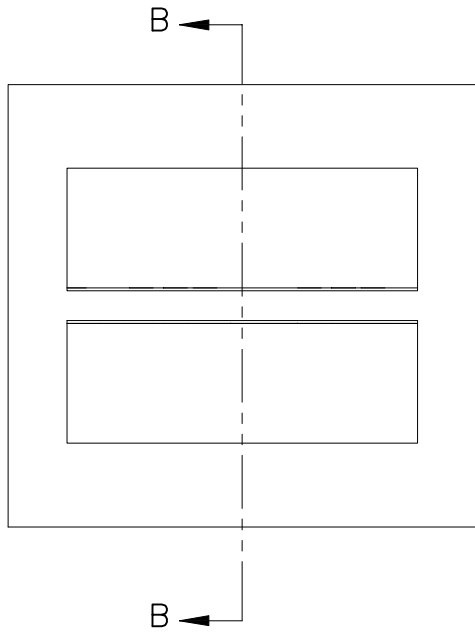
REV	ECN NO.	NAME	DATE

TOLERANCE	
LINEAR	ANGLES
X±0.40	X'± 3°
.X±0.30	.X'±
.XX±0.20	.XX'±
.XXX±0.10	.XXX'±

<b>UMax conn</b> 东莞市友贸实业有限公司 DONGGUAN UMAX ENTERPRISE LIMITED		APPD: Jason	MAT'L:
		CHKD: Schumi	FINISH:
DRWN: Lei Songping		Q'TY:	

TITLE: SFP+ CAGE 1x2 NICKEL PLATING Through Hole - Press-Fit			
PART NO. UMAX7212401		DWG NO. C-UMAX7D01117	
	UNITS	SCALE	SHEET
	MM	1 : 1	2 OF 6
		REV	0

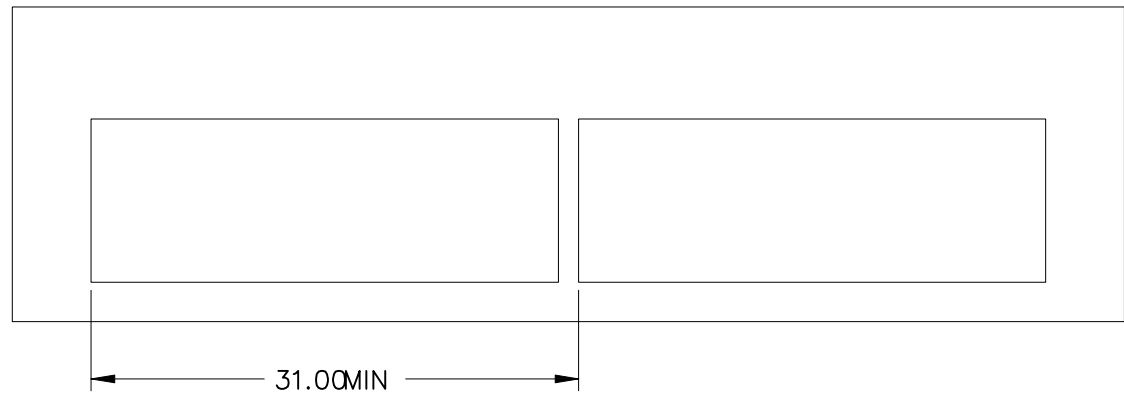
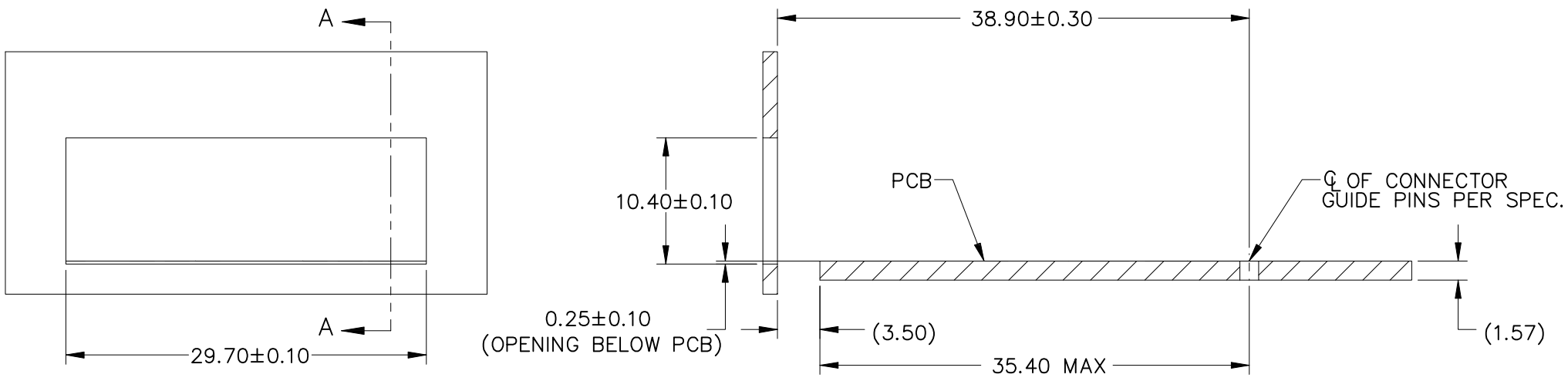
RECOMMENDED BEZEL DESIGN  
(BELLY TO BELLY CAGE MOUNTING)



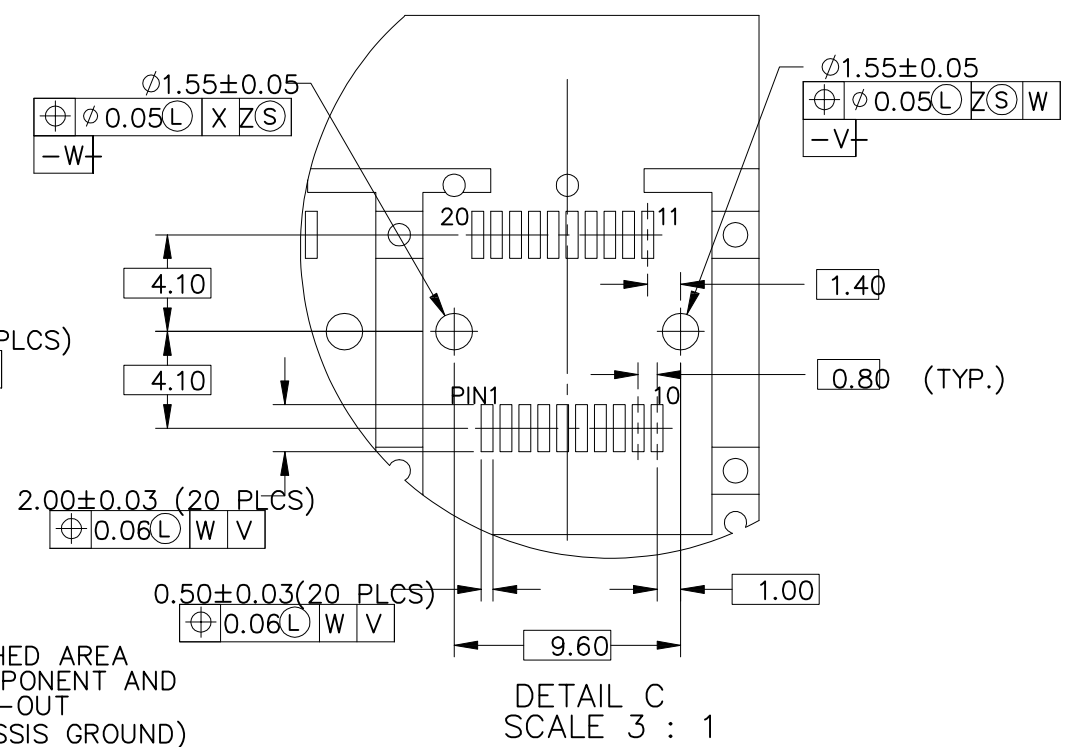
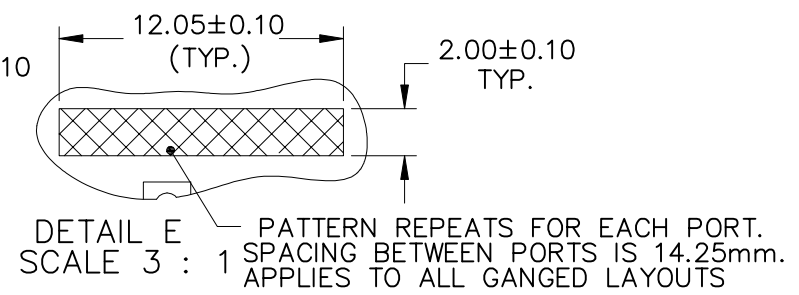
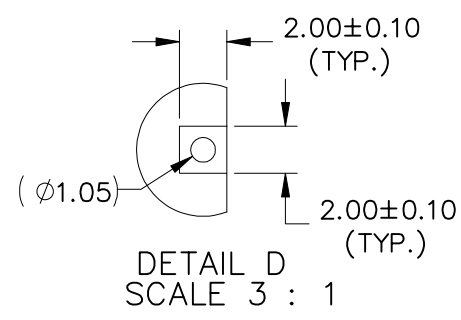
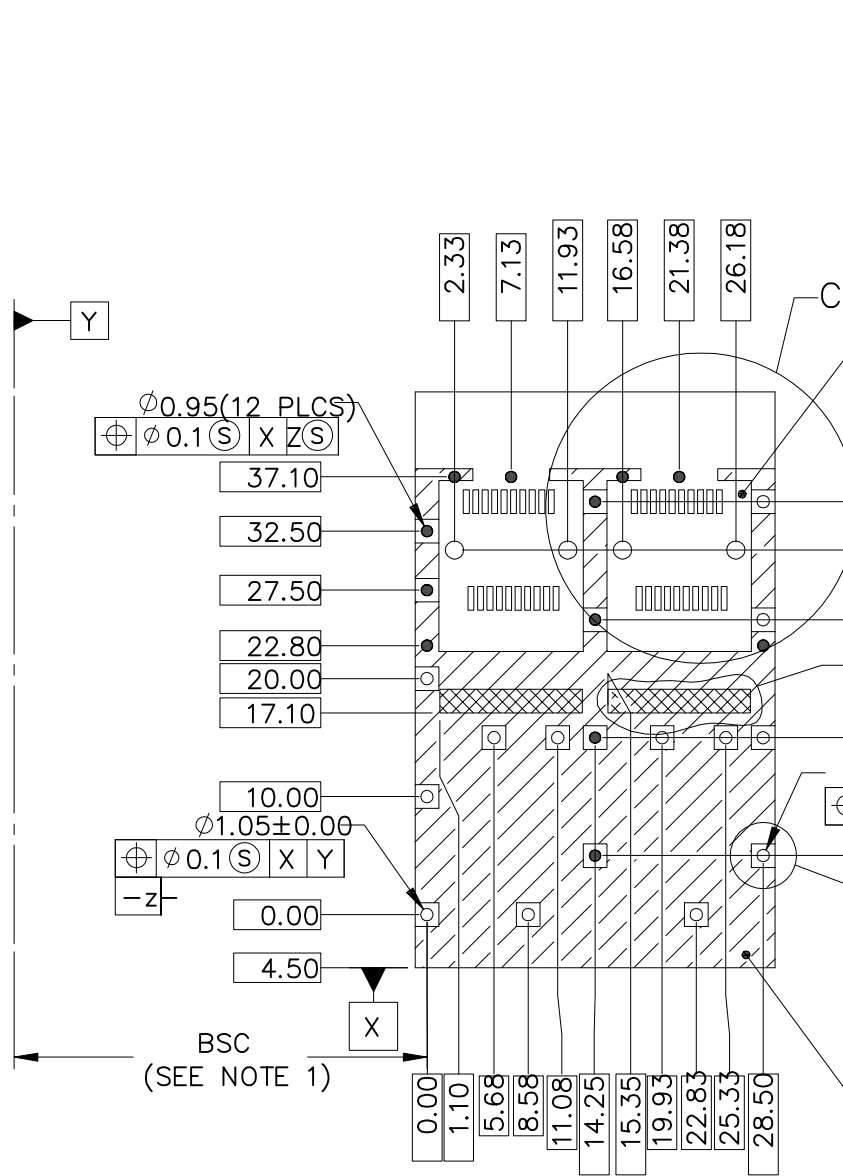
SECTION B-B  
SCALE 1.5 : 1

TOLERANCE		<b>UMax conn</b> 东莞市友贸实业有限公司 DONGGUAN UMAX ENTERPRISE LIMITED		TITLE: SFP+ CAGE 1x2 NICKEL PLATING Through Hole - Press-Fit				
LINEAR	ANGLES			PART NO. UMAX7212401				
X±0.40	X°± 3°	APPD:	Jason	MAT'L:	DWG NO. C-UMAX7D01117			
.X±0.30	.X°±	CHKD:	Schumi	FINISH:	UNITS	SCALE	SHEET	REV
.XX±0.20	.XX°±	DRWN:	Lei Songping	Q'TY:	MM	1 : 1	3 OF 6	0
.XXX±0.10	.XXX°±							

REV	ECN NO.	NAME	DATE



				TOLERANCE		<b>UMax conn</b> 东莞市友贸实业有限公司 DONGGUAN UMAX ENTERPRISE LIMITED	TITLE: SFP+ CAGE 1x2 NICKEL PLATING Through Hole - Press-Fit						
				LINEAR	ANGLES		PART NO. UMAX7212401						
				X±0.40	X°± 3°	APPD: Jason	MAT'L:			DWG NO. C-UMAX7D01117			
				.X±0.30	.X°±	CHKD: Schumi	FINISH:			UNITS	SCALE	SHEET	REV
				.XX±0.20	.XX°±	DRWN: Lei Songping	Q'TY:			MM	1 : 1	4 OF 6	0
REV	ECN NO.	NAME	DATE	.XXX±0.10	.XXX°±								



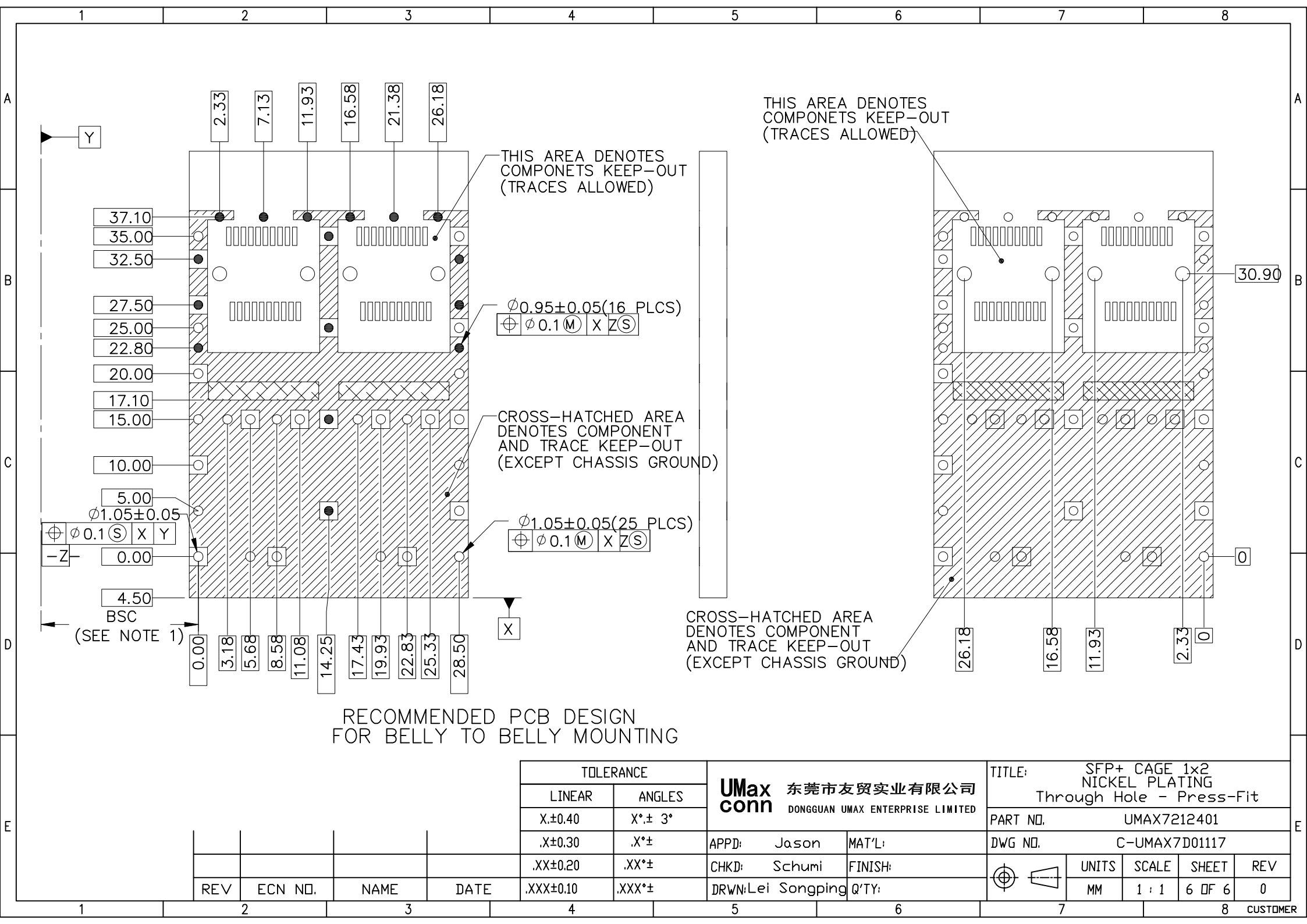
RECOMMENDED PCB DESIGN  
FOR SINGLE SIDE MOUNTING

TOLERANCE	
LINEAR	ANGLES
X ± 0.40	X° ± 3°
.X ± 0.30	.X° ±
.XX ± 0.20	.XX° ±
.XXX ± 0.10	.XXX° ±

<b>UMax conn</b> 东莞市友贸实业有限公司 DONGGUAN UMAX ENTERPRISE LIMITED	
APPD: Jason	MAT'L:
CHKD: Schumi	FINISH:
DRWN: Lei Songping	Q'TY:

TITLE: SFP+ CAGE 1x2 NICKEL PLATING Through Hole - Press-Fit			
PART NO. UMAX7212401		DWG NO. C-UMAX7D01117	
UNITS	SCALE	SHEET	REV
MM	1 : 1	5 OF 6	0

REV	ECN NO.	NAME	DATE



Y

37.10  
35.00  
32.50

27.50  
25.00  
22.80

20.00  
17.10  
15.00

10.00

5.00

$\phi 1.05 \pm 0.05$

$\phi 0.1 (S) X Y$

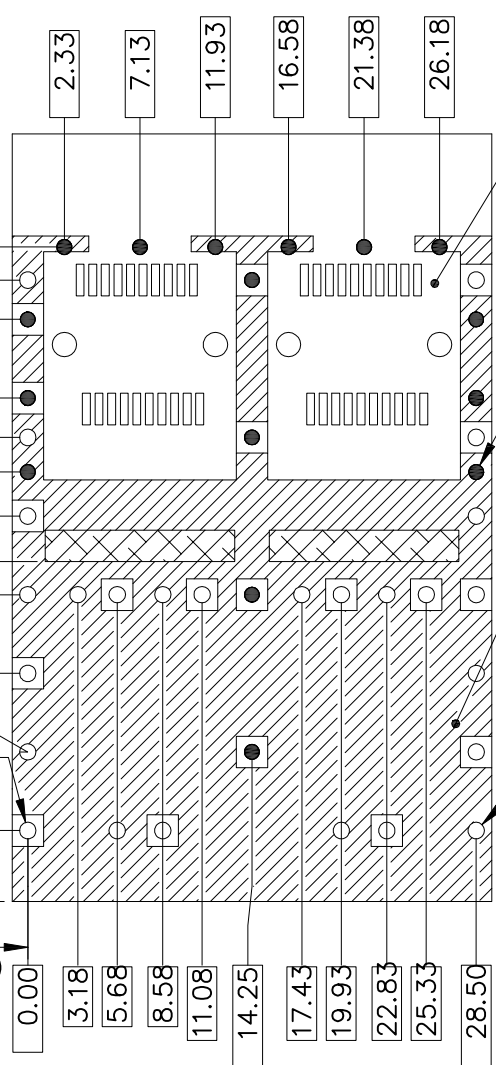
-Z-

0.00

4.50

BSC  
(SEE NOTE 1)

X



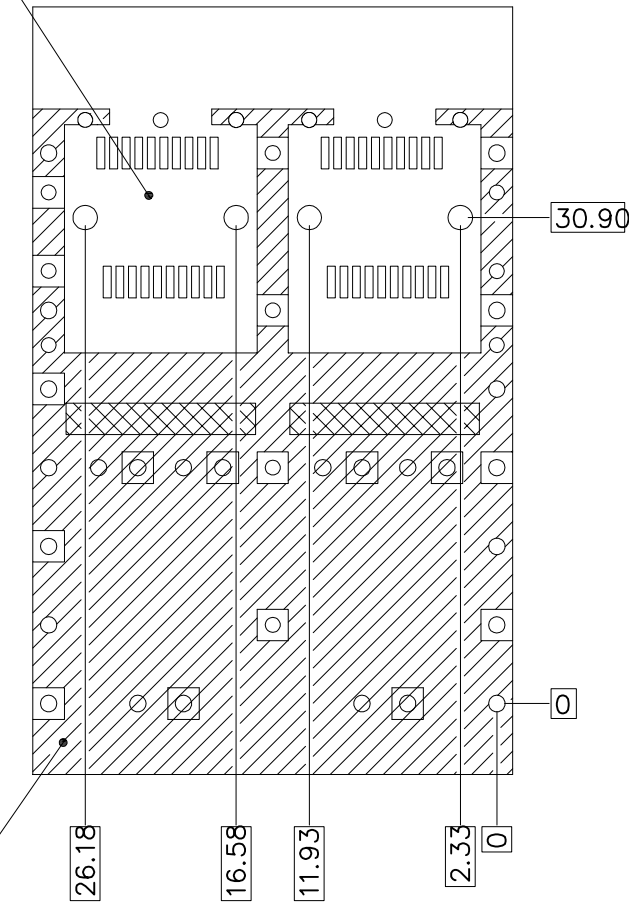
$\phi 0.95 \pm 0.05 (16 \text{ PLCS})$

$\phi 0.1 (M) X Z (S)$

$\phi 1.05 \pm 0.05 (25 \text{ PLCS})$

$\phi 0.1 (M) X Z (S)$

THIS AREA DENOTES COMPONENTS KEEP-OUT (TRACES ALLOWED)



CROSS-HATCHED AREA DENOTES COMPONENT AND TRACE KEEP-OUT (EXCEPT CHASSIS GROUND)

RECOMMENDED PCB DESIGN FOR BELLY TO BELLY MOUNTING

				TOLERANCE		<b>UMax conn</b> 东莞市友贸实业有限公司 DONGGUAN UMAX ENTERPRISE LIMITED		TITLE: SFP+ CAGE 1x2 NICKEL PLATING Through Hole - Press-Fit			
LINEAR		ANGLES		PART NO. UMAX7212401							
X $\pm$ 0.40		X $^{\circ}$ $\pm$ 3 $^{\circ}$		APPD: Jason		MAT'L:		DWG NO. C-UMAX7D01117			
.X $\pm$ 0.30		.X $^{\circ}$ $\pm$		CHKD: Schumi		FINISH:		UNITS	SCALE	SHEET	REV
.XX $\pm$ 0.20		.XX $^{\circ}$ $\pm$		DRWN: Lei Songping		Q'TY:		MM	1 : 1	6 OF 6	0
REV	ECN NO.	NAME	DATE	.XXX $\pm$ 0.10	.XXX $^{\circ}$ $\pm$						