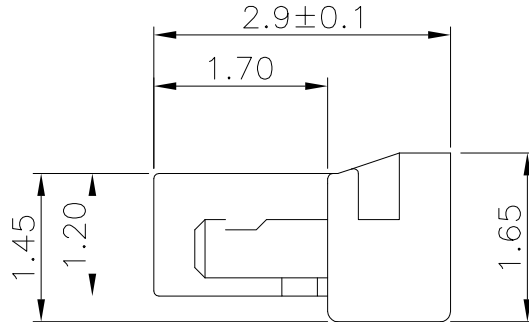
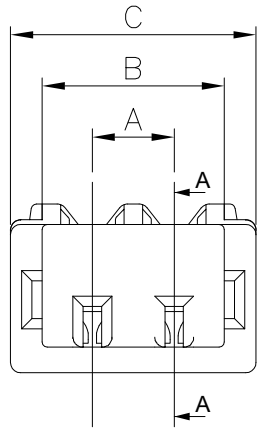
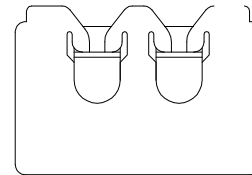
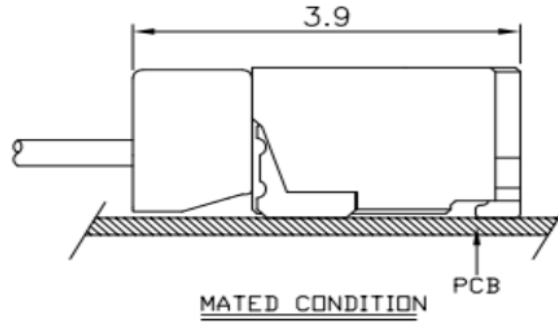
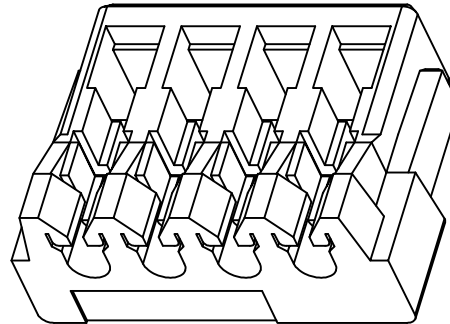
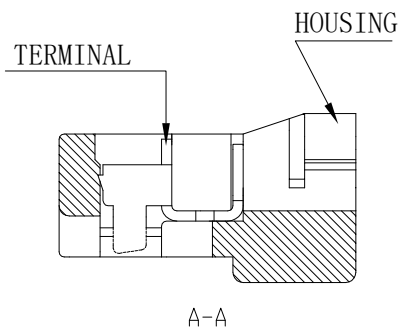
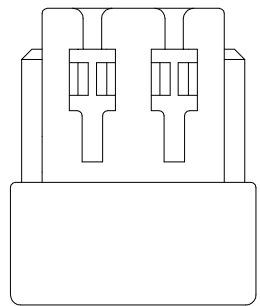


Engineer Drawing

- NOTE:
- MATERIAL SPECIFICATION:
 - 1-1.HOUSING:PA66/PA46, 94V-0
 - 1-2.TERMINAL:PHOSPHOR BRONZE AWG #32-#34
 - PLATING SPECIFICATION:
 - 2-1.TREMINAL:
TIN OR AU PLATED ON CONTACT AREA.
 - MECHANICAL PERFORMANCE:
 - 3-1.RETENTION FORCE: 0.3kgf/PIN MIN
 - 3-2.DURABILITY: 50 CYCLES.
 - ELECTRICAL PERFORMANCE:
 - 4-1. RATED CURRENT : 0.5A
RATED VOLTAGE : 30V AC
 - 4-2.INSULATION RESISTANCE: 100MΩ MIN
 - 4-3.CONTACT RESISTANCE :30mΩ MAX
 - 4-4.WITHSTANDING VOLTAGE: 200V AC
 - ENVIRONMENTAL PERFORMANCE:
 - OPERATING TEMPERATURE: -25°C~+85°C.
 - PACKAGE SPEC: TUBE



- IPCW080H ** * * * * *
- ① ② ③ ④ ⑤ ⑥ ⑦
- ① Series Type
 - ② Pin code.
 - ③ Material code
 - ④ Appereace code
 - ⑤ lneral code
 - ⑥ Company code.
 - ⑦ Other code.



| PART NO. | Dimension mm | | | PART NO. | Dimension mm | | |
|----------|--------------|------|-------|----------|--------------|-------|-------|
| | A | B | C | | A | B | C |
| 02 | 0.80 | 1.78 | 2.40 | 13 | 9.60 | 10.58 | 11.20 |
| 03 | 1.60 | 2.58 | 3.20 | 14 | 10.40 | 11.38 | 12.00 |
| 04 | 2.40 | 3.38 | 4.00 | 15 | 11.20 | 12.18 | 12.80 |
| 05 | 3.20 | 4.18 | 4.80 | 16 | 12.00 | 12.98 | 13.60 |
| 06 | 4.00 | 4.98 | 5.60 | 17 | 12.80 | 13.78 | 14.40 |
| 07 | 4.80 | 5.78 | 6.40 | 18 | 13.60 | 14.58 | 15.20 |
| 08 | 5.60 | 6.58 | 7.20 | 19 | 14.40 | 15.38 | 16.00 |
| 09 | 6.40 | 7.38 | 8.00 | 20 | 15.20 | 16.18 | 16.80 |
| 10 | 7.20 | 8.18 | 8.80 | 21 | 16.00 | 16.98 | 17.60 |
| 11 | 8.00 | 8.98 | 9.60 | 22 | 16.80 | 17.78 | 18.40 |
| 12 | 8.80 | 9.78 | 10.40 | | | | |

TOLERANCE

- .X ± 0.35
- .XX ± 0.25
- .XXX ± 0.0
- ANGLES ±6°

UNLESS OTHERWISE SPECIFIED



www.i-ncp.com

PART NO.
IPCW080H xx
DRAWING NO.
IPCW080H06

TITLE:
Pitch0.8mm SUR
HOUSING 刺破式 无耳



SHEET 1 OF 1

UNITS mm

SCALE 1:1

REV. 01