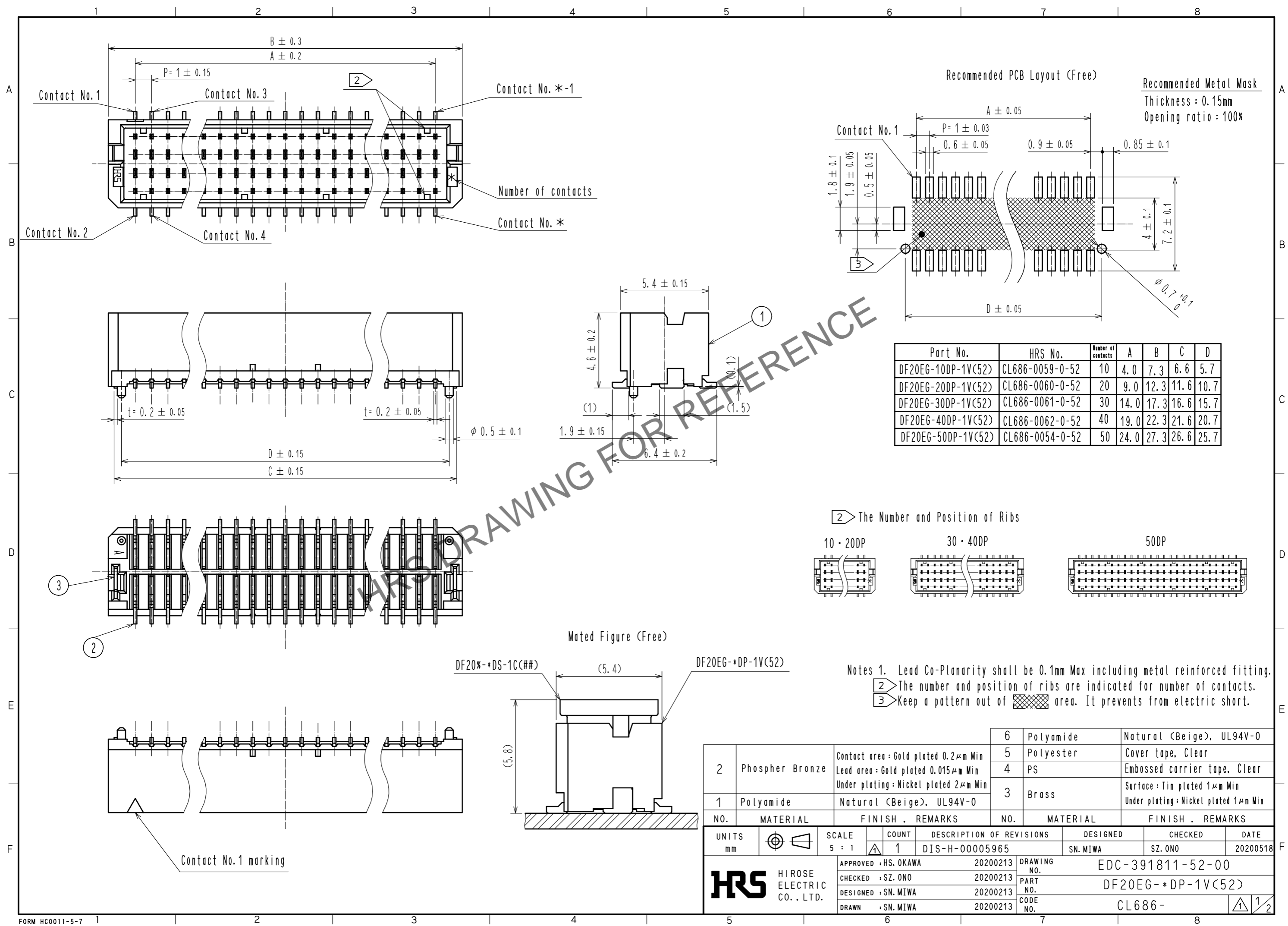
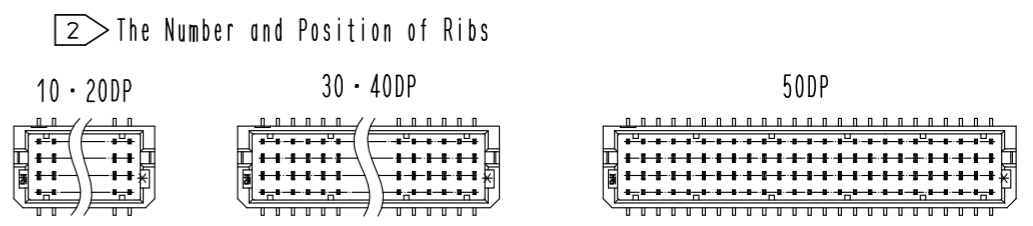


Aug.1.2023 Copyright 2023 HIROSE ELECTRIC CO., LTD. All Rights Reserved.
In case of consideration for using Automotive equipment / device which demand high reliability, kindly contact our sales window correspondents.



Part No.	HRS No.	Number of contacts	A	B	C	D
DF20EG-10DP-1V(52)	CL686-0059-0-52	10	4.0	7.3	6.6	5.7
DF20EG-20DP-1V(52)	CL686-0060-0-52	20	9.0	12.3	11.6	10.7
DF20EG-30DP-1V(52)	CL686-0061-0-52	30	14.0	17.3	16.6	15.7
DF20EG-40DP-1V(52)	CL686-0062-0-52	40	19.0	22.3	21.6	20.7
DF20EG-50DP-1V(52)	CL686-0054-0-52	50	24.0	27.3	26.6	25.7



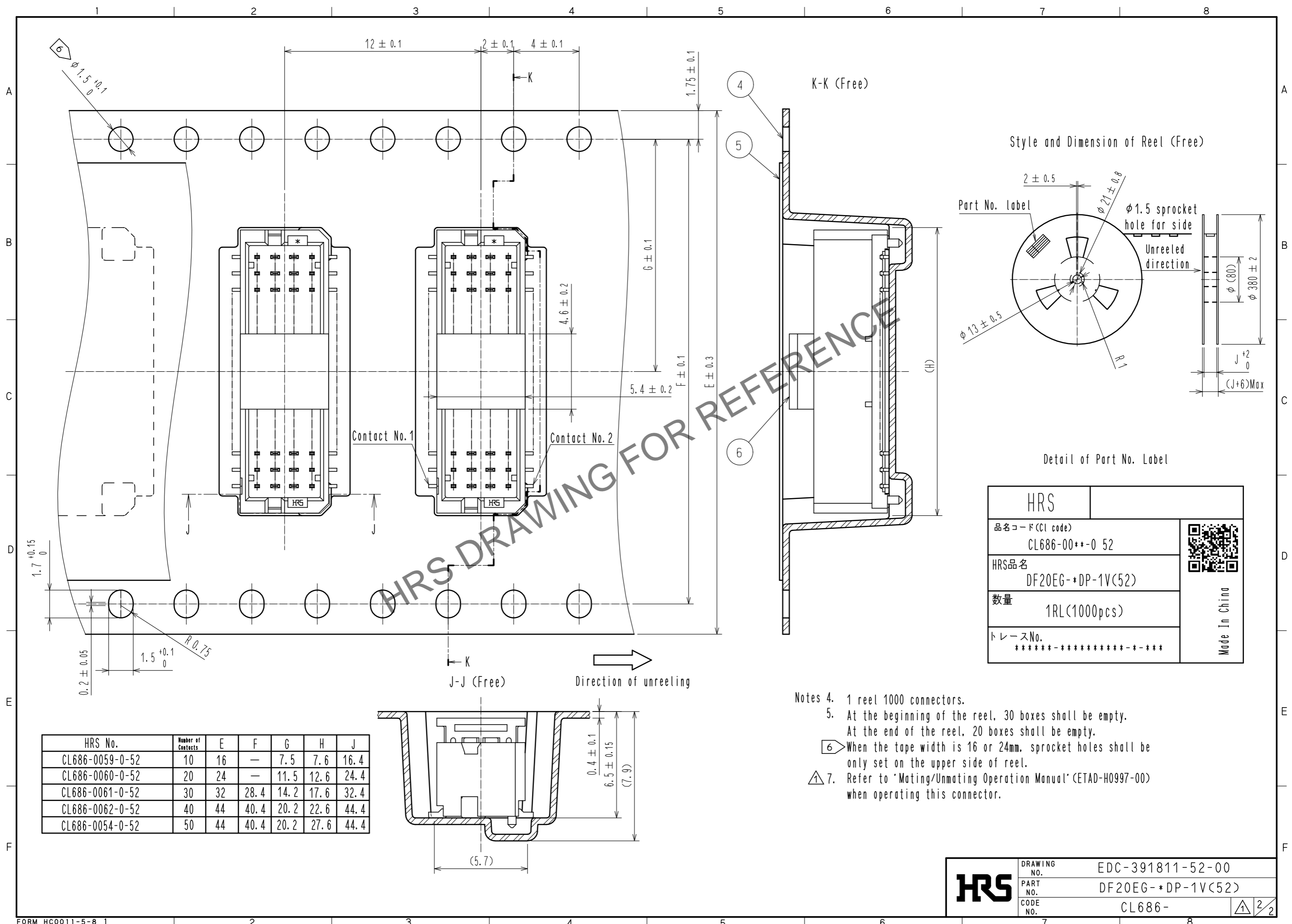
Notes 1. Lead Co-Planarity shall be 0.1mm Max including metal reinforced fitting.
 2 The number and position of ribs are indicated for number of contacts.
 3 Keep a pattern out of area. It prevents from electric short.

NO.	MATERIAL	FINISH . REMARKS	NO.	MATERIAL	FINISH . REMARKS
2	Phospher Bronze	Contact area : Gold plated 0.2μm Min Lead area : Gold plated 0.015μm Min Under plating : Nickel plated 2μm Min	6	Polyamide	Natural (Beige), UL94V-0
1	Polyamide	Natural (Beige), UL94V-0	5	Polyester	Cover tape, Clear
			4	PS	Embossed carrier tape, Clear
			3	Brass	Surface : Tin plated 1μm Min Under plating : Nickel plated 1μm Min

UNITS	SCALE	COUNT	DESCRIPTION OF REVISIONS	DESIGNED	CHECKED	DATE
mm	5 : 1	1	DIS-H-00005965	SN.MIWA	SZ.ONO	20200518

APPROVED	DESIGNED	DRAWING NO.
HS.OKAWA 20200213	SN.MIWA 20200213	EDC-391811-52-00
CHECKED : SZ.ONO 20200213	DESIGNED : SN.MIWA 20200213	PART NO. DF20EG-*DP-1V(52)
DRAWN : SN.MIWA 20200213	DRAWN : SN.MIWA 20200213	CODE NO. CL686-

Aug.1.2023 Copyright 2023 HIROSE ELECTRIC CO., LTD. All Rights Reserved.
 In case of consideration for using Automotive equipment / device which demand high reliability, kindly contact our sales window correspondents.



HRS No.	Number of Contacts	E	F	G	H	J
CL686-0059-0-52	10	16	—	7.5	7.6	16.4
CL686-0060-0-52	20	24	—	11.5	12.6	24.4
CL686-0061-0-52	30	32	28.4	14.2	17.6	32.4
CL686-0062-0-52	40	44	40.4	20.2	22.6	44.4
CL686-0054-0-52	50	44	40.4	20.2	27.6	44.4

- Notes 4. 1 reel 1000 connectors.
 5. At the beginning of the reel, 30 boxes shall be empty.
 At the end of the reel, 20 boxes shall be empty.
 6. When the tape width is 16 or 24mm, sprocket holes shall be only set on the upper side of reel.
 7. Refer to 'Mating/Unmating Operation Manual' (ETAD-H0997-00) when operating this connector.

HRS	DRAWING NO.	EDC-391811-52-00
	PART NO.	DF20EG-*DP-1V(52)
	CODE NO.	CL686-