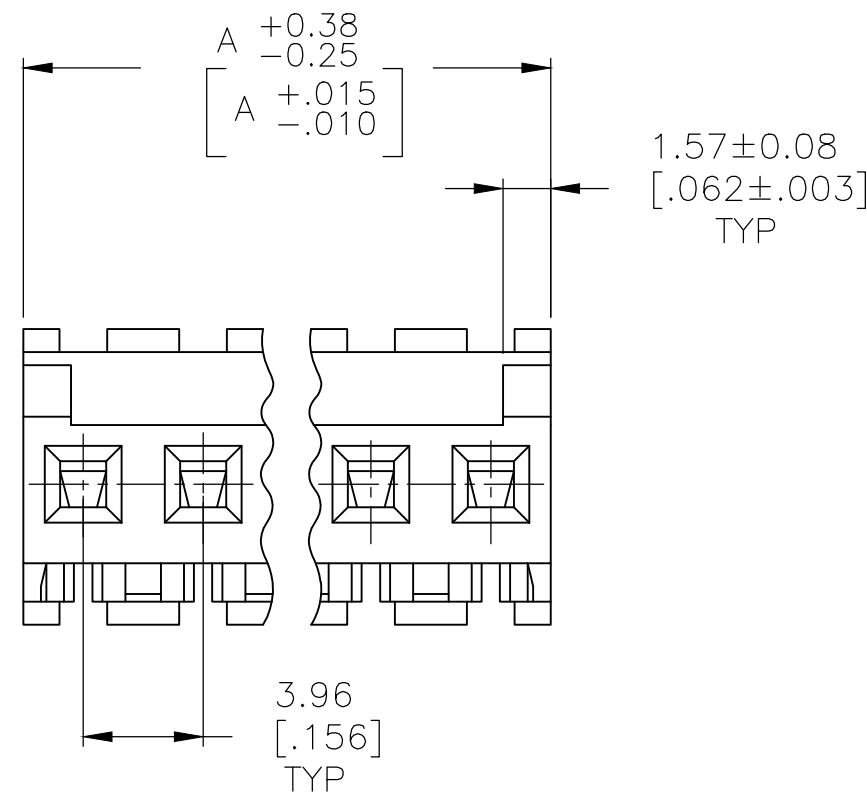
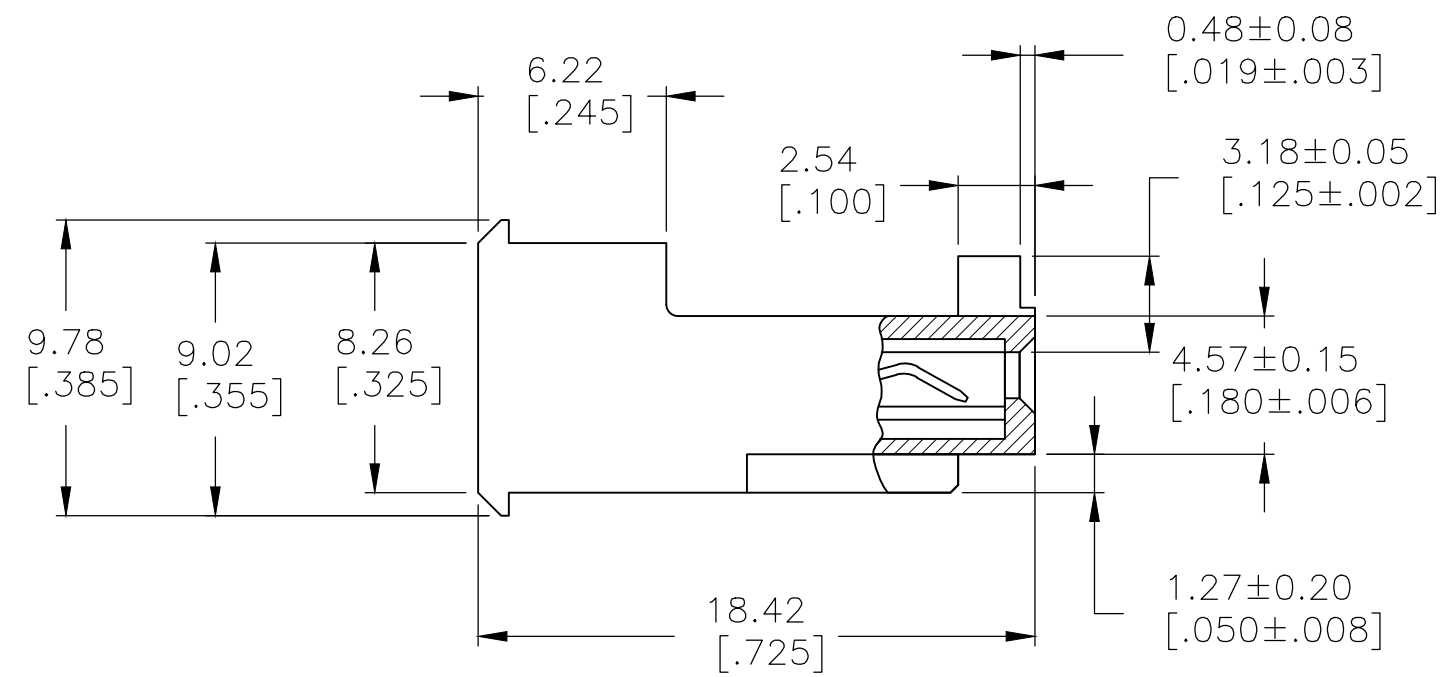
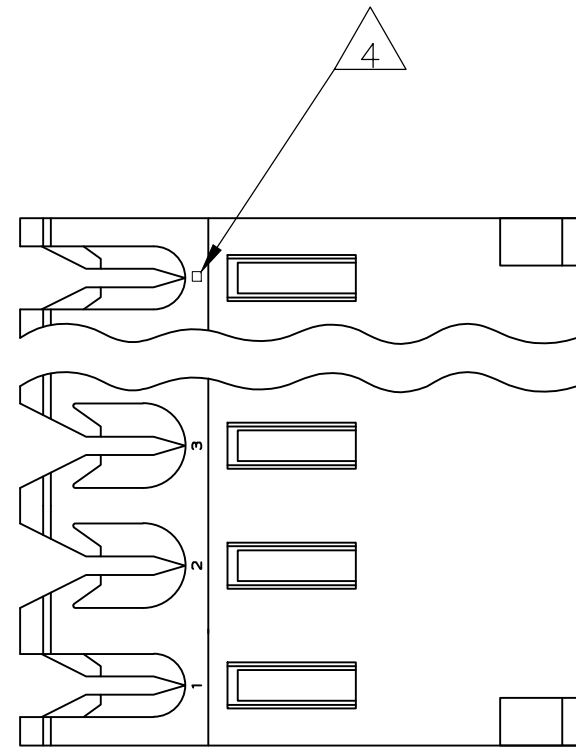


THIS DRAWING IS UNPUBLISHED. RELEASED FOR PUBLICATION  
 © COPYRIGHT - By - TE CONNECTIVITY ALL RIGHTS RESERVED.

LOC	DIST	REVISIONS			
P	LTR	DESCRIPTION	DATE	DWN	APVD
CM	54	E	REVISED PER ECR-20-000820	27MAY2020	PC SW

- 1 MATERIAL: CONNECTOR - NYLON UL94V-2 (YELLOW)  
 CONTACTS - 0.30[.012] THICK COPPER ALLOY  
 (BRIGHT TIN-LEAD 0.00203[.000080] MIN. THICK FOR CONTACTS 644470-2 THRU 1-644470-4)  
 (MATTE WHISKER MITIGATED TIN 0.00203[.000080] MIN THICKNESS OVER NICKEL UNDERPLATE FOR 3-644470-2 THRU 4-644470-4).
- 2 CONTACTS ACCEPT 20 AWG WIRE WITH 2.41[.095] MAX INSULATION DIAMETER.
- 3 CONTACTS MUST ACCEPT 1.14±0.03[.045±.001] SQUARE POST AND REMAIN LOCKED IN POSITION.
- 4 IDENTIFICATION NUMBER FOR LAST CIRCUIT MAY NOT APPEAR ON ALL ASSEMBLIES.
- 5 DIMENSIONS IN BRACKETS ARE IN INCHES.
- 6 HOUSING FEATURES ARE: FEED-THRU WITHOUT LOCKING RAMP AND WITH POLARIZING TAB.
- 7 OBSOLETE PARTS: OBSOLETE CIS STREAMLINING PER D.RENAUD/D.SINISI
- 8 OBSOLETE PARTS



7 SUPERSEDED  
 8 SUPERSEDED

DIM A	NO OF CIRCUITS	PART NO
55.47 [2.184]	14	4-644470-4
51.51 [2.028]	13	4-644470-3
47.55 [1.872]	12	4-644470-2
43.59 [1.716]	11	4-644470-1
39.62 [1.560]	10	4-644470-0
35.66 [1.404]	9	3-644470-9
31.70 [1.248]	8	3-644470-8
27.74 [1.092]	7	3-644470-7
23.77 [.936]	6	3-644470-6
19.81 [.780]	5	3-644470-5
15.85 [.624]	4	3-644470-4
11.89 [.468]	3	3-644470-3
7.92 [.312]	2	3-644470-2
55.47 [2.184]	14	<del>1-644470-4</del>
51.51 [2.028]	13	<del>1-644470-3</del>
47.55 [1.872]	12	<del>1-644470-2</del>
43.59 [1.716]	11	<del>1-644470-1</del>
39.62 [1.560]	10	<del>1-644470-0</del>
35.66 [1.404]	9	<del>644470-9</del>
31.70 [1.248]	8	<del>644470-8</del>
27.74 [1.092]	7	<del>644470-7</del>
23.77 [.936]	6	<del>644470-6</del>
19.81 [.780]	5	<del>644470-5</del>
15.85 [.624]	4	<del>644470-4</del>
11.89 [.468]	3	<del>644470-3</del>
7.92 [.312]	2	<del>644470-2</del>

THIS DRAWING IS A CONTROLLED DOCUMENT.		DWN B. LEWIS 12 FEB 91	TE Connectivity	
DIMENSIONS: mm [INCHES]		CHK R. SWING 12 FEB 91	MTA 156 CONNECTOR ASSEMBLY, 20 AWG, STANDARD	
TOLERANCES UNLESS OTHERWISE SPECIFIED:		APVD D.R. CLARK 20 FEB 91	NAME	
0 PLC ± -	1 PLC ± -	PRODUCT SPEC 108-1051	SIZE	
2 PLC ± -	3 PLC ± -	APPLICATION SPEC 114-1020	CAGE CODE A2 00779	DRAWING NO C=644470
4 PLC ± -	ANGLES ± -	MATERIAL	WEIGHT	RESTRICTED TO
FINISH		CUSTOMER DRAWING		SCALE 4:1
1		1		SHEET 1 OF 1
1		1		REV E