

CTSPMA5010F Series

From .47 μ H to 10 μ H



SPECIFICATIONS

Parts are available in $\pm 20\%$ inductance tolerance only

| Part Number | Inductance (μ H) | L Test Condition | DCR Max. (m Ω) | Isat Max. (A) | Irms Max. (A) |
|------------------|-----------------------|------------------|------------------------|---------------|---------------|
| CTSPMA5010F-R47M | 0.47 | 100KHz, 1V | 38.0 | 9.4 | 4.5 |
| CTSPMA5010F-R68M | 0.68 | 100KHz, 1V | 45.3 | 7.6 | 4.1 |
| CTSPMA5010F-1R0M | 1.00 | 100KHz, 1V | 57.0 | 7.2 | 3.6 |
| CTSPMA5010F-1R5M | 1.50 | 100KHz, 1V | 65.0 | 5.8 | 3.1 |
| CTSPMA5010F-2R2M | 2.20 | 100KHz, 1V | 75.0 | 4.5 | 3.0 |
| CTSPMA5010F-3R3M | 3.30 | 100KHz, 1V | 104.0 | 4.1 | 2.5 |
| CTSPMA5010F-4R7M | 4.70 | 100KHz, 1V | 151.0 | 3.2 | 2.1 |
| CTSPMA5010F-6R8M | 6.80 | 100KHz, 1V | 198.0 | 2.6 | 1.9 |
| CTSPMA5010F-100M | 10 | 100KHz, 1V | 335.0 | 1.8 | 1.3 |

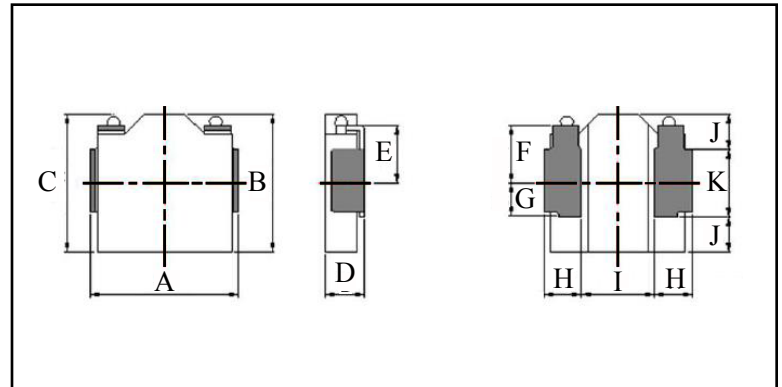
PHYSICAL DIMENSIONS

| Size | A | B | C Max. | D Max. | E | F |
|--------|------------------|-----------------|-----------|-----------|-------|-------|
| mm | 5.4 \pm 0.2 | 5.1 \pm 0.2 | 5.4 | 1.0 | 2.0 | 2.0 |
| inches | 0.21 \pm 0.008 | 0.20 \pm 0.08 | 0.21 | 0.039 | 0.079 | 0.079 |

| Size | G | H | I | J | K |
|--------|-------|-------------------|-------|-------------------|-------|
| mm | 1.25 | 1.20 \pm 0.1 | 3.0 | 1.30 \pm 0.1 | 2.5 |
| inches | 0.049 | 0.047 \pm 0.004 | 0.118 | 0.051 \pm 0.004 | 0.098 |

CHARACTERISTICS

Description: SMD (shielded) Power Inductors
Applications: Smart phones, Notebook PC's, Tablets, HDD's, Servers, VRM's, Compact power supply modules, etc.
Saturation Rated Current (Isat): The DC current when the when the inductance becomes 30% lower than its initial value. (Ta=25°C)
Temperature Rise Current (Irms): The actual current when temperature of coil becomes $\Delta T 40^\circ\text{C}$. (Ta=25°C)
Operating Temperature Range: -55°C to 155°C
Markings: Inductance Code
Miscellaneous: RoHS compliant
Samples available. See website for ordering information.



PAD LAYOUT

