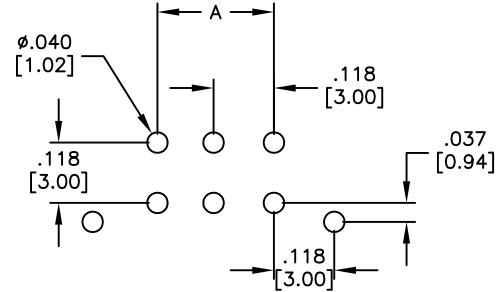
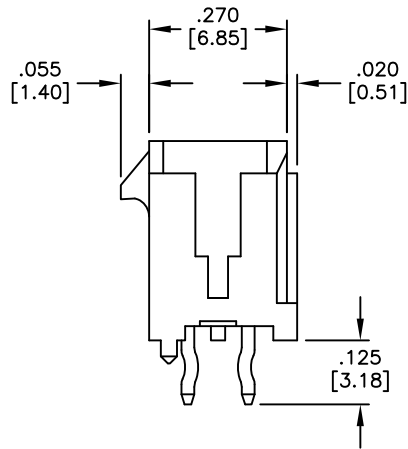
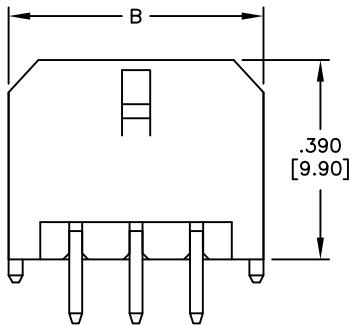
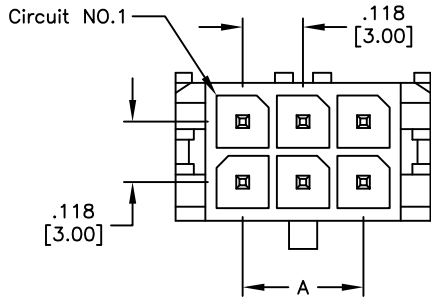


APPROVED: _____
 DATE: _____ TITLE: _____



PCB LAYOUT: COMPONENT SIDE
 RECOMMENDED PCB THICKNESS: .062" [1.57]

| POSITIONS | Dimension | |
|-----------|---------------|---------------|
| | A | B |
| 2 | NA | .262 [6.65] |
| 4 | .118 [3.00] | .380 [9.65] |
| 6 | .236 [6.00] | .498 [12.65] |
| 8 | .354 [9.00] | .616 [15.65] |
| 10 | .472 [12.00] | .734 [18.65] |
| 12 | .591 [15.00] | .852 [21.65] |
| 14 | .709 [18.00] | .970 [24.65] |
| 16 | .827 [21.00] | 1.088 [27.65] |
| 18 | .945 [24.00] | 1.206 [30.65] |
| 20 | 1.063 [27.00] | 1.325 [33.65] |
| 22 | 1.181 [30.00] | 1.443 [36.65] |
| 24 | 1.299 [33.00] | 1.561 [39.65] |

SPECIFICATIONS:

Material:
 Insulator: Hi-Temp Thermoplastic, rated UL 94V-0
 Insulator color: Black
 Contacts: Brass
 Plating:
 Tin over Nickel underplate overall
 Electrical:

Operating voltage: 250 V
 Current rating: 20 & 22 Awg: 5 Amps max
 24 Awg: 4 Amps max
 26 Awg: 3 Amps max
 28 Awg: 2 Amps max
 30 Awg: 1 Amp max

Contact resistance: 10 mohms max
 Dielectric strength: 1,500 VAC for 1 minute
 Temperature Rating:
 -45°C to +125°C

Environmental:
 Lead free, RoHS compliant.



| Rev | AWO # | Description | Date | Appr |
|-----|-------|------------------------|----------|-------|
| - | 9648 | RELEASED | 2/15/07 | |
| A | | UPDATED | 11/23/07 | |
| B | | UPDATED | 1/07/08 | |
| C | | REDRAWN | 7/16/09 | |
| D | | REVISED SOLDERIND TEMP | 2/16/12 | |
| E | | REVISED DIMENSION C | 3/12/12 | |
| F | | REVISED TOP VIEW | 10/6/14 | |
| G | | UPDATED | 5/19/16 | AY/LL |

UNLESS OTHERWISE SPECIFIED
 ALL DIMENSIONS ARE INCHES [MM]
 TOLERANCES: EXCEPT AS NOTED

| | |
|-------------|-------------|
| INCHES | HOLES |
| .X ± .10 | ∅X ± .10 |
| .XX ± .020 | ∅XX ± .015 |
| .XXX ± .015 | ∅XXX ± .010 |

| APPROVALS | | DATE |
|-----------|----|---------|
| DRAWN | BW | 2/15/07 |
| CHECKED | | |
| APPROVED | | |

ADAM TECH

909 Rahway Avenue, Union, NJ 07083
 Phone: 908-687-5000 Fax: 908-687-5710

TITLE: .118 [3.00] DUAL ROW THRU HOLE HEADER
 VERTICAL TYPE

| | | |
|--------------|----------------------------|--------------|
| SIZE X | PART NO. DML-XX-A-V-T-A | REV. G |
| REF: S00123T | SCALE: NTS | SHEET 1 OF 1 |