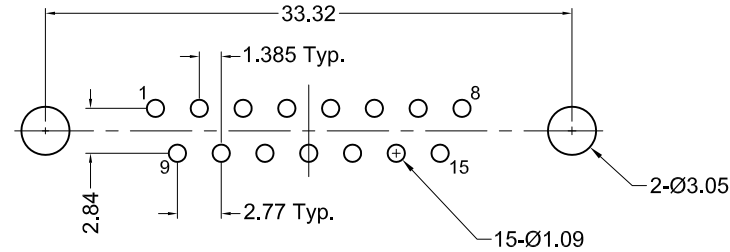


**Recommended PCB Layout**  
(top view)



**Material And Finish**

Shell: Steel Material, Nickel Plated

Insert: PBT Thermoplastic,  
Black Color, 30%  
Glass Filled, UL 94V-0 Rated

Contact Material:  
Plug - Brass

Contact Plating:  
Standard:

Gold flash on mating end,  
tin on termination end, with  
entire contact nickel underplated

-15 Option:

15u" gold on mating end,  
tin on termination end, with  
entire contact nickel underplated

-30 Option:

30u" gold on mating end,  
tin on termination end, with  
entire contact nickel underplated

**Electrical Specifications**

Rated Current: 2A

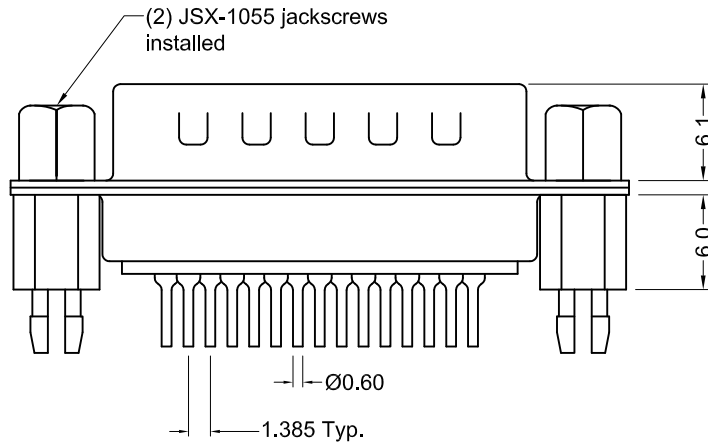
Rated Voltage: 30V RMS

Dielectric Withstanding Voltage:  
1000V (rms) AC for 1 minute

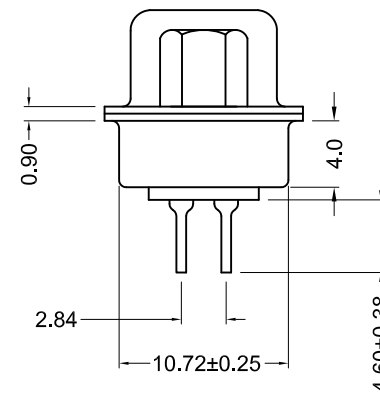
Insulation Resistance:  
more than 1000 Megohm  
at 500V DC

Contact Resistance:  
13 milliohm max.

Operating Temperature  
-55°C to +105°C



Boardlock not shown  
in this view



**Ordering Information**

Part Number	Contact Area Plating Finish
K85X-AD-15P-BRJ	Gold Flash (standard)
K85X-AD-15P-BRJ15	15u" Gold (15 option)
K85X-AD-15P-BRJ30	30u" Gold (30 option)

**RoHS COMPLIANT**



Tolerances
X.X ± 0.25
X.XX ± 0.15
Unless Stated Otherwise

REV.	DATE	DESCRIPTION	REV. BY	CHK. BY	DRAWN BY	DATE
A1	1/05/06	New Drawing	R. Aguirre	H. MA	R. Aguirre	10/12/05
A2	1/8/08	ECO # 07-052	WILL H.	H. MA		
A3	12/31/17	ECO #17-030	J. Elbanna	C. Furumasu		
					UNITS	
					mm	

**K85X-AD-15P-BRJ**

Vertical PCB Mount D-Sub ,RoHS Compliant

15 pos. male w/boardlocks & JS-1055 jackscrews installed

