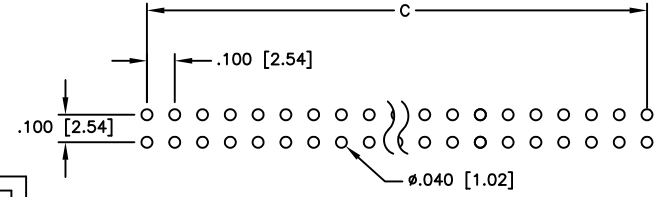
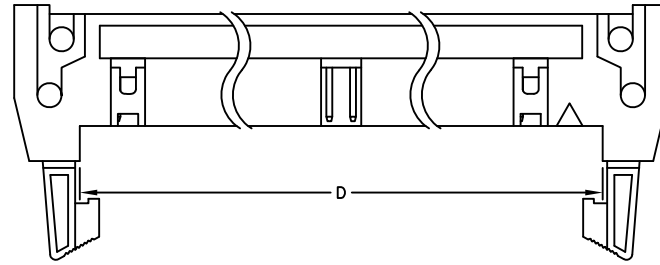
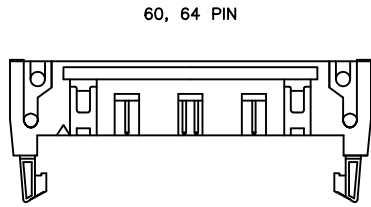
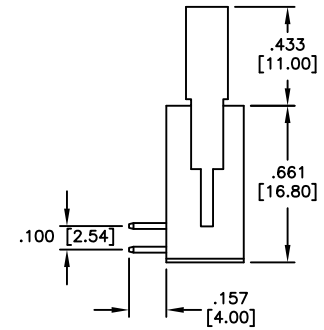
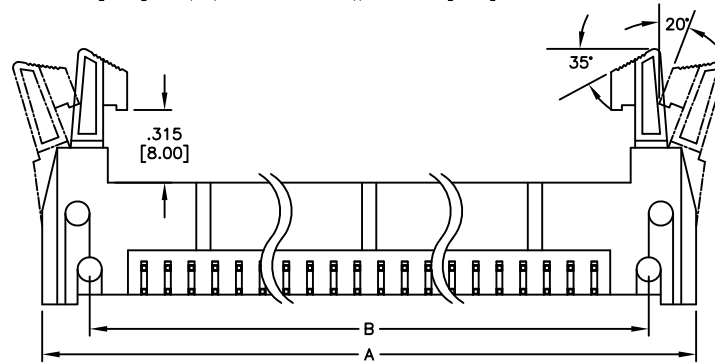
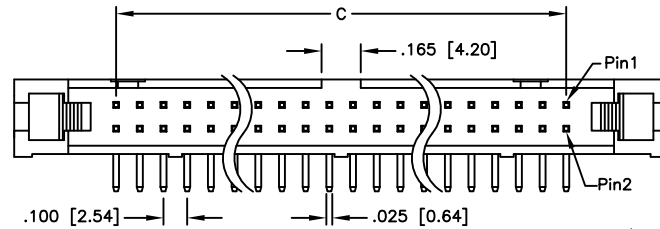
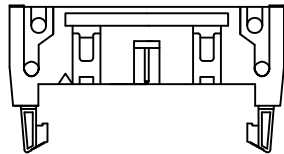


APPROVED: _____
 DATE: _____ TITLE: _____

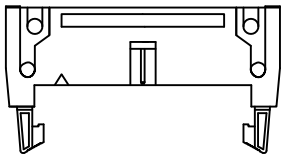
| Rev | AWO # | Description | Date | Appr |
|-----|-------|---------------|----------|--------|
| - | | RELEASED | 12/10/09 | |
| A | | ADDED DRAWING | 12/25/18 | AY/RC1 |



20, 24, 26, 30, 34, 40, 50 PIN



10, 14, 16 PIN



Positions: 10, 14, 16, 20, 24, 26, 30, 34, 40, 50, 60, 64
 A = .100 [2.54] x No. of Spaces + .855 [21.71]
 B = .100 [2.54] x No. of Spaces + .454 [11.54]
 C = .100 [2.54] x No. of Spaces
 D = .100 [2.54] x No. of Spaces + .305 [7.74]

SPECIFICATIONS:

Material:
 Insulator: PBT, glass reinforced, rated UL 94V-0, Color: Black
 Contacts: Brass
 Plating:
 Gold flash over Nickel underplate overall
 Electrical:
 Current rating: 1 Amp
 Contact Resistance: 10 mohm max
 Insulation resistance: 1000 Mohm min
 Dielectric withstanding voltage: 500 VAC for 1 minute
 Temperature Rating:
 Operating temperature: -55°C to +105°C
 Environmental:
 Lead free, RoHS compliant.



| | | | |
|---|-------------|---|--------------|
| UNLESS OTHERWISE SPECIFIED ALL DIMENSIONS ARE MM [INCHES] TOLERANCES: EXCEPT AS NOTED | | ADAM TECH 909 Rahway Avenue, Union, NJ 07083 Phone: 908-687-5000 Fax: 908-687-5710 | |
| INCHES HOLES .X ±.10 Ø.X ±.10 .XX ±.020 Ø.XX ±.015 .XXX ±.015 Ø.XXX ±.010 | | | |
| APPROVALS | | TITLE | |
| DRAWN | DY | LATCH BOX HEADER, RIGHT ANGLE LONG EJECTOR LATCHES | |
| CHECKED | | DATE | |
| APPROVED | | DATE | |
| SIZE | PART NO. | REV.P | |
| X | MHR-XX-HUAL | A | |
| REF: S00059T | | SCALE: NTS | SHEET 1 OF 1 |

6

5

4

3

2

1

D

D

C

C

B

B

A

A

6

5

4

3

2

1