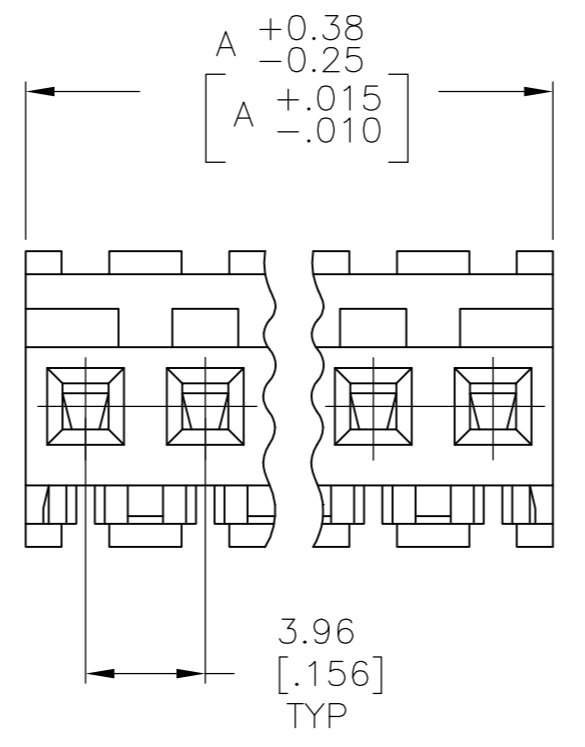
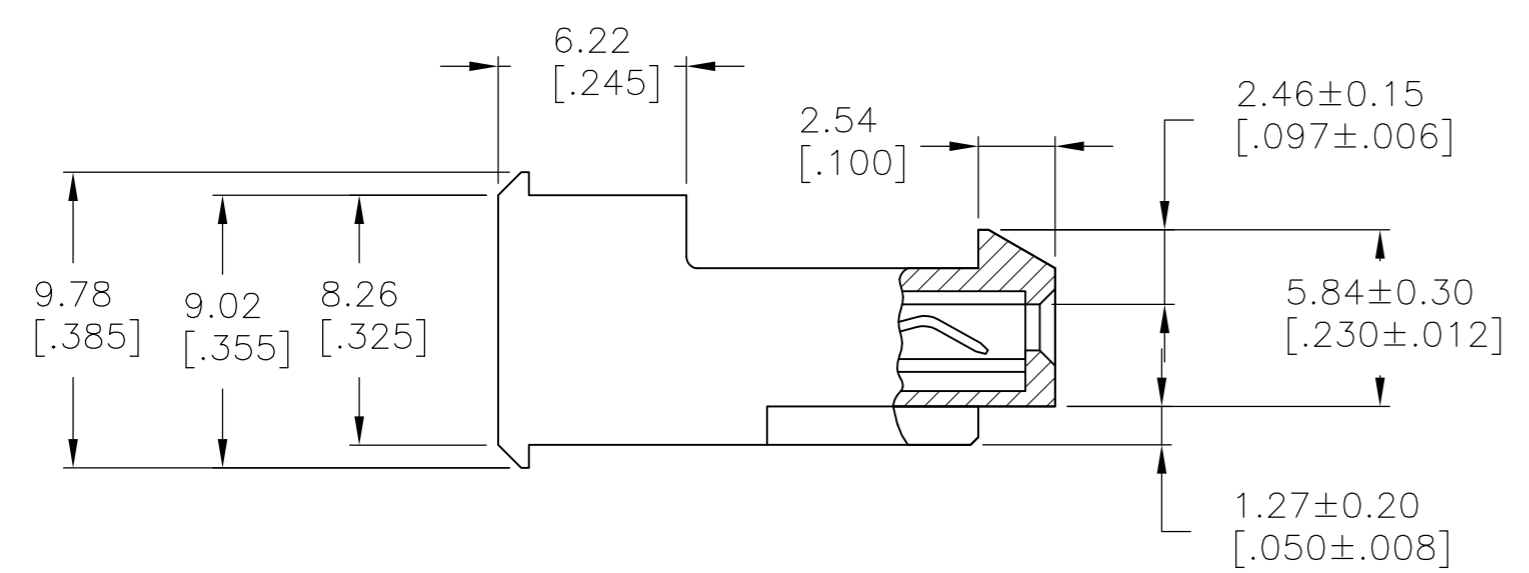
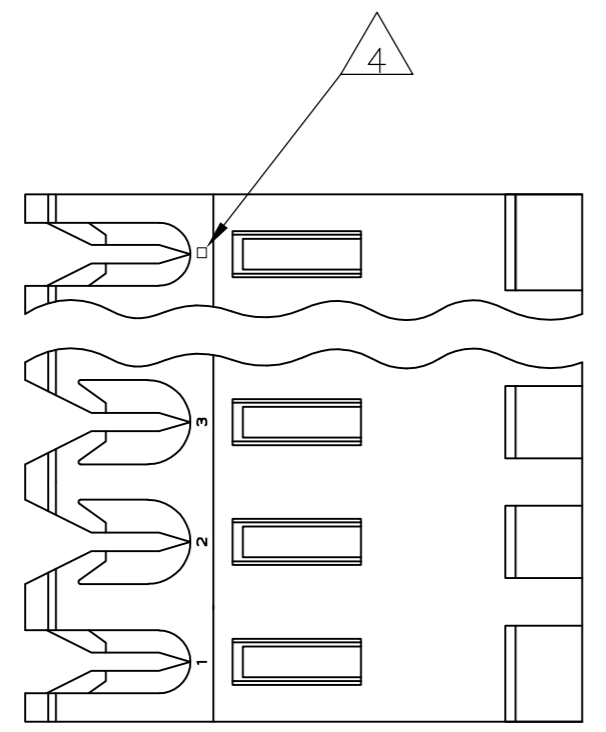


THIS DRAWING IS UNPUBLISHED. RELEASED FOR PUBLICATION
 © COPYRIGHT - By - ALL RIGHTS RESERVED.

LOC		DIST		REVISIONS			
P	LTR	DESCRIPTION		DATE	DWN	APVD	
CM	00	K1	REVISED PER ECO-11-015731	03AUG11	HMR	SM	



1 MATERIAL: CONNECTOR - NYLON UL94V-2 (WHITE).
 CONTACTS - 0.30[.012] THICK COPPER ALLOY
 0.00076[.000030] GOLD THK OR 0.00008[.000003] MIN THK
 GOLD FLASH OVER 0.00068[.000027] THK PALLADIUM NICKEL,
 PER TE CONNECTIVITY'S DISCRETION. IN CONTACT
 AREA WITH BRIGHT TIN-LEAD FOR 641230-2 THRU
 2-641230-4, MATTE WHISKER MITIGATED TIN FOR
 3-641230-2 THRU 5-641230-4 OVER NICKEL
 UNDERPLATE.

2. CONTACTS ACCEPT 24 AWG WIRE WITH 2.41[.095] MAX INSULATION DIAMETER.

3. CONTACTS MUST ACCEPT 1.14±.03 [.045±.001] SQUARE POST AND REMAIN LOCKED IN POSITION.

4 IDENTIFICATION NUMBER FOR LAST CIRCUIT MAY NOT APPEAR ON ALL ASSEMBLIES.

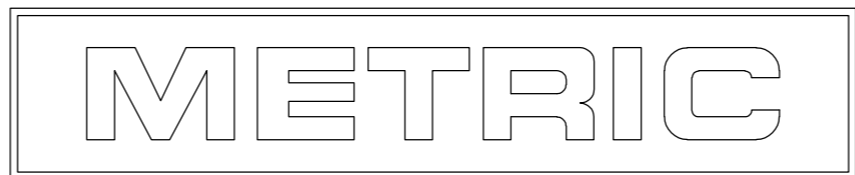
5. DIMENSIONS IN BRACKETS ARE IN INCHES.

6. HOUSING FEATURES ARE: FEED-THRU WITH LOCKING RAMP.

7 OBSOLETE PARTS: OBSOLETE CIS STREAMLINING PER D.RENAUD/D.SINISI

95.10	[3.744]	24	5-641230-4
91.14	[3.588]	23	5-641230-3
87.17	[3.432]	22	5-641230-2
83.21	[3.276]	21	5-641230-1
79.25	[3.120]	20	5-641230-0
75.29	[2.964]	19	4-641230-9
71.32	[2.808]	18	4-641230-8
67.36	[2.652]	17	4-641230-7
63.40	[2.496]	16	4-641230-6
59.44	[2.340]	15	4-641230-5
55.47	[2.184]	14	4-641230-4
51.51	[2.028]	13	4-641230-3
47.55	[1.872]	12	4-641230-2
43.59	[1.716]	11	4-641230-1
39.62	[1.560]	10	4-641230-0
35.66	[1.404]	9	3-641230-9
31.70	[1.248]	8	3-641230-8
27.74	[1.092]	7	3-641230-7
23.77	[.936]	6	3-641230-6
19.81	[.780]	5	3-641230-5
15.85	[.624]	4	3-641230-4
11.89	[.468]	3	3-641230-3
7.92	[.312]	2	3-641230-2
95.10	[3.744]	24	2-641230-4
91.14	[3.588]	23	2-641230-3
87.17	[3.432]	22	2-641230-2
83.21	[3.276]	21	2-641230-1
79.25	[3.120]	20	2-641230-0
75.29	[2.964]	19	1-641230-9
71.32	[2.808]	18	1-641230-8
67.36	[2.652]	17	1-641230-7
63.40	[2.496]	16	1-641230-6
59.44	[2.340]	15	1-641230-5
55.47	[2.184]	14	1-641230-4
51.51	[2.028]	13	1-641230-3
47.55	[1.872]	12	1-641230-2
43.59	[1.716]	11	1-641230-1
39.62	[1.560]	10	1-641230-0
35.66	[1.404]	9	641230-9
31.70	[1.248]	8	641230-8
27.74	[1.092]	7	641230-7
23.77	[.936]	6	641230-6
19.81	[.780]	5	641230-5
15.85	[.624]	4	641230-4
11.89	[.468]	3	641230-3
7.92	[.312]	2	641230-2

7 SUPERCEDED



THIS DRAWING IS A CONTROLLED DOCUMENT.		DWN B. LEWIS 12 MAR 96		
DIMENSIONS: mm [INCHES]		CHK R. SWING 12 MAR 96		
TOLERANCES UNLESS OTHERWISE SPECIFIED:		APVD D. CLARK 12 MAR 96	NAME	
0 PLC ± -		PRODUCT SPEC	MTA-156 CONNECTOR ASSEMBLY, 24 AWG, STANDARD	
1 PLC ± -		108-1051	SIZE	CAGE CODE
2 PLC ± -		APPLICATION SPEC	A2	00779
3 PLC ± -		114-1020	DRAWING NO	RESTRICTED TO
4 PLC ± -		WEIGHT	C=641230	-
ANGLES ± -		CUSTOMER DRAWING	SCALE	SHEET
FINISH		SCALE 4:1	1 OF 1	REV K1