

CTSPMA4012F Series

From .47 μ H to 10 μ H



SPECIFICATIONS

Parts are available in $\pm 20\%$ inductance tolerance only

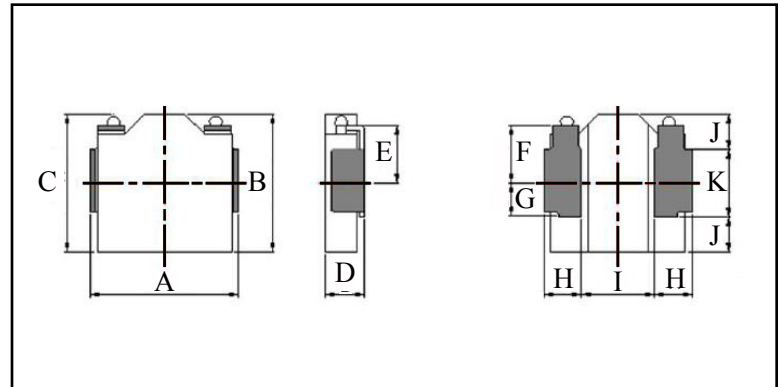
Part Number	Inductance (μ H)	L Test Condition	DCR Max. (m Ω)	Isat Max. (A)	Irms Max. (A)
CTSPMA4012F-R47M	0.47	100KHz, 1V	15.3	12.0	6.8
CTSPMA4012F-R68M	0.68	100KHz, 1V	25.0	9.4	5.0
CTSPMA4012F-1R0M	1.00	100KHz, 1V	29.5	7.2	4.7
CTSPMA4012F-1R5M	1.50	100KHz, 1V	43.3	5.0	4.2
CTSPMA4012F-2R2M	2.20	100KHz, 1V	57.5	4.6	3.6
CTSPMA4012F-3R3M	3.30	100KHz, 1V	105.0	3.6	2.4
CTSPMA4012F-4R7M	4.70	100KHz, 1V	128.0	3.2	2.3
CTSPMA4012F-6R8M	6.80	100KHz, 1V	223.0	2.4	1.6
CTSPMA4012F-100M	10	100KHz, 1V	250.0	1.6	1.5

PHYSICAL DIMENSIONS

Size	A	B	C	D	E	F
			Max.	Max.		
mm	4.4 \pm 0.2	4.1 \pm 0.2	4.4	1.2	1.60	1.60
inches	0.17 \pm 0.008	0.16 \pm 0.008	0.17	0.047	0.063	0.063
Size	G	H	I	J	K	
mm	1.0	1.10 \pm 0.1	2.2	1.05 \pm 0.1	2.0	
inches	0.039	0.043 \pm 0.004	0.087	0.041 \pm 0.004	0.079	

CHARACTERISTICS

Description: SMD (shielded) Power Inductors
Applications: Smart phones, Notebook PC's, Tablets, HDD's, Servers, VRM's, Compact power supply modules, etc.
Saturation Rated Current (Isat): The DC current when the when the inductance becomes 30% lower than its initial value . (Ta=25°C)
Temperature Rise Current (Irms): The actual current when temperature of coil becomes $\Delta T 40^{\circ}\text{C}$. (Ta=25°C)
Operating Temperature Range: -55°C to 155°C
Markings: Inductance Code
Miscellaneous: RoHS compliant
Samples available. See website for ordering information.



PAD LAYOUT

