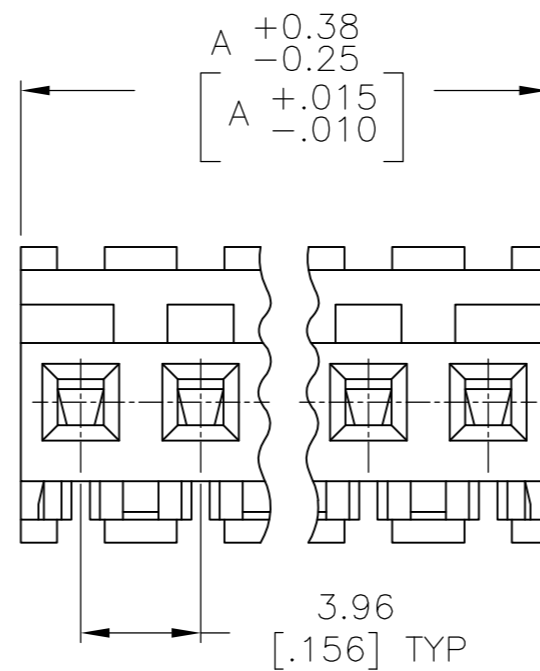
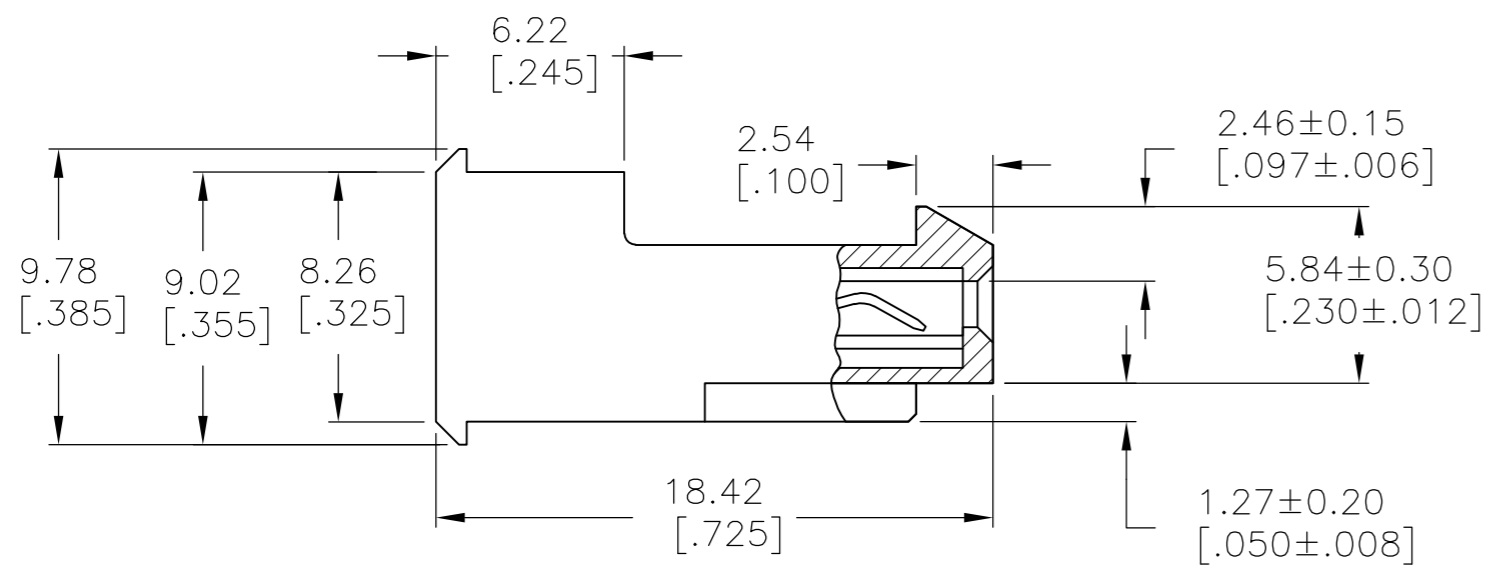
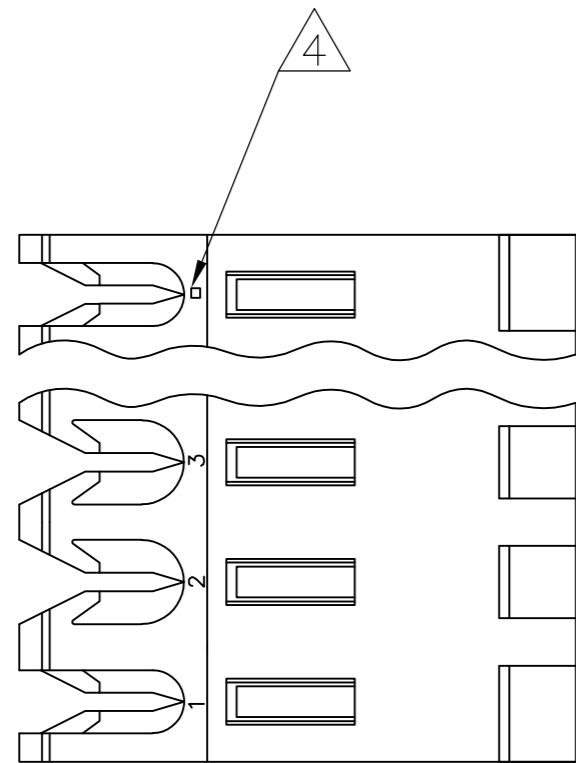


THIS DRAWING IS UNPUBLISHED. RELEASED FOR PUBLICATION
 © COPYRIGHT - By - TE CONNECTIVITY ALL RIGHTS RESERVED.

| LOC | DIST | REVISIONS | | | | | |
|-----|------|-----------|-----|---------------------------|-----------|-----|------|
| CM | 00 | P | LTR | DESCRIPTION | DATE | DWN | APVD |
| | | AA2 | | REVISED PER ECR-15-006687 | 21OCT2015 | NK | NL |



| | | |
|---------------|----|------------|
| 95.10 [3.744] | 24 | 5-641227-4 |
| 91.14 [3.588] | 23 | 5-641227-3 |
| 87.17 [3.432] | 22 | 5-641227-2 |
| 83.21 [3.276] | 21 | 5-641227-1 |
| 79.25 [3.120] | 20 | 5-641227-0 |
| 75.29 [2.964] | 19 | 4-641227-9 |
| 71.32 [2.808] | 18 | 4-641227-8 |
| 67.36 [2.652] | 17 | 4-641227-7 |
| 63.40 [2.496] | 16 | 4-641227-6 |
| 59.44 [2.340] | 15 | 4-641227-5 |
| 55.47 [2.184] | 14 | 4-641227-4 |
| 51.51 [2.028] | 13 | 4-641227-3 |
| 47.55 [1.872] | 12 | 4-641227-2 |
| 43.59 [1.716] | 11 | 4-641227-1 |
| 39.62 [1.560] | 10 | 4-641227-0 |
| 35.66 [1.404] | 9 | 3-641227-9 |
| 31.70 [1.248] | 8 | 3-641227-8 |
| 27.74 [1.092] | 7 | 3-641227-7 |
| 23.77 [.936] | 6 | 3-641227-6 |
| 19.81 [.780] | 5 | 3-641227-5 |
| 15.85 [.624] | 4 | 3-641227-4 |
| 11.89 [.468] | 3 | 3-641227-3 |
| 7.92 [.312] | 2 | 3-641227-2 |
| 95.10 [3.744] | 24 | 2-641227-4 |
| 91.14 [3.588] | 23 | 2-641227-3 |
| 87.17 [3.432] | 22 | 2-641227-2 |
| 83.21 [3.276] | 21 | 2-641227-1 |
| 79.25 [3.120] | 20 | 2-641227-0 |
| 75.29 [2.964] | 19 | 1-641227-9 |
| 71.32 [2.808] | 18 | 1-641227-8 |
| 67.36 [2.652] | 17 | 1-641227-7 |
| 63.40 [2.496] | 16 | 1-641227-6 |
| 59.44 [2.340] | 15 | 1-641227-5 |
| 55.47 [2.184] | 14 | 1-641227-4 |
| 51.51 [2.028] | 13 | 1-641227-3 |
| 47.55 [1.872] | 12 | 1-641227-2 |
| 43.59 [1.716] | 11 | 1-641227-1 |
| 39.62 [1.560] | 10 | 1-641227-0 |
| 35.66 [1.404] | 9 | 641227-9 |
| 31.70 [1.248] | 8 | 641227-8 |
| 27.74 [1.092] | 7 | 641227-7 |
| 23.77 [.936] | 6 | 641227-6 |
| 19.81 [.780] | 5 | 641227-5 |
| 15.85 [.624] | 4 | 641227-4 |
| 11.89 [.468] | 3 | 641227-3 |
| 7.92 [.312] | 2 | 641227-2 |

1 SUPERCEDED
 2 SUPERCEDED
 3 SUPERCEDED
 4 SUPERCEDED
 5 SUPERCEDED
 6 SUPERCEDED
 7 SUPERCEDED
 8 SUPERCEDED
 9 SUPERCEDED
 10 SUPERCEDED
 11 SUPERCEDED
 12 SUPERCEDED
 13 SUPERCEDED
 14 SUPERCEDED
 15 SUPERCEDED
 16 SUPERCEDED
 17 SUPERCEDED
 18 SUPERCEDED
 19 SUPERCEDED
 20 SUPERCEDED
 21 SUPERCEDED
 22 SUPERCEDED
 23 SUPERCEDED
 24 SUPERCEDED

1 MATERIAL: CONNECTOR - NYLON UL94V-2 (ORANGE).
 CONTACTS - 0.00076[.000030] GOLD THK OR 0.00008[.000003] MIN THK GOLD FLASH OVER 0.00068[.000027] THK PALLADIUM NICKEL, PER TE CONNECTIVITY'S DISCRETION. IN CONTACT AREA WITH BRIGHT TIN-LEAD FOR -2 THRU -28, MATTE WHISKER MITIGATED TIN FOR 3-641227-2 THRU 5-641227-4 OVER NICKEL UNDERPLATE.

2 CONTACTS ACCEPT 18 AWG WIRE WITH 2.41[.095] MAX INSULATION DIAMETER.

3 CONTACTS MUST ACCEPT 1.14±0.03 [.045±.001] SQUARE POST AND REMAIN LOCKED IN POSITION.

4 IDENTIFICATION NUMBER FOR LAST CIRCUIT MAY NOT APPEAR ON ALL ASSEMBLIES.

5 DIMENSIONS IN BRACKETS ARE IN INCHES.

6 HOUSING FEATURES ARE: FEED-THRU WITH LOCKING RAMP.

7 OBSOLETE PARTS: OBSOLETE CIS STREAMLINING PER D.RENAUD/D.SINISI

| | | | | |
|--|--|-------------------------------|---|--|
| THIS DRAWING IS A CONTROLLED DOCUMENT. | | DWN B. LEWIS 12 FEB 91 | TE Connectivity | |
| DIMENSIONS: mm [INCHES] | | CHK R. SWING 12 FEB 91 | MTA-156 CONNECTOR ASSEMBLY, 18 AWG, STANDARD | |
| TOLERANCES UNLESS OTHERWISE SPECIFIED: | | APVD D. CLARK 20 FEB 91 | RESTRICTED TO | |
| 0 PLC ± - | | PRODUCT SPEC | - | |
| 1 PLC ± - | | 108-1051 | - | |
| 2 PLC ± - | | APPLICATION SPEC | - | |
| 3 PLC ± 0.13 [.005] | | 114-1020 | - | |
| 4 PLC ± - | | WEIGHT | - | |
| ANGLES ± - | | FINISH | - | |
| MATERIAL 1 | | SCALE | 4:1 | |
| FINISH 1 | | SHEET | 1 OF 1 | |
| CUSTOMER DRAWING | | REV | AA2 | |