



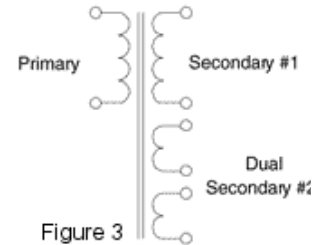
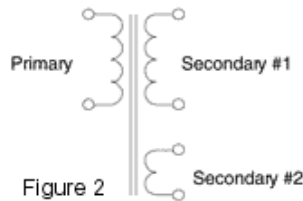
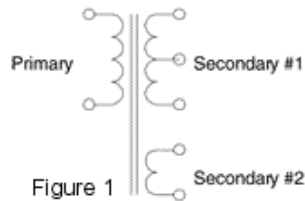
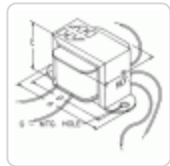
Quality Products. Service Excellence.

Plate & Filament or Bias - 6 VA to 83 VA 261-262 Series

115 V Primary

Features

- Primary 115 VAC, 60 Hz. (Except **261B6**, **261D6** & **261GE6** which are 115/230 50/60 Hz. and **(262EE6** which is 120/240, 50/60 Hz)
- Designed for small power or bias supplies, test equipment, preamps etc.
- Models 261C6, 261D6, 261E6, and 261G6 can also be used with full wave C.T. rectifiers.
- Economical , two hole, channel bracket, chassis mount.
- Minimum 5" long leads.
- Convenient 6.3 or 12.6 volt filament/auxiliary winding.



Ask About
Custom
Transformers
& Chokes



| Part No. | VA | A.C. | | Schematic Figure # or PDF | Dimensions | | | | | Weight (Lbs) |
|-----------|------|---------------------|---------------------|---------------------------------|------------|------|------|------|-------------|-----------------|
| | | Secondary #1 RMS | Secondary #2 RMS | | A | B | C | D | G | |
| 261B6 | 15.3 | 200V C.T. @ 45 ma | 6.3Vct @ 1A | 1 | | | | | | 1 |
| 261C6 | 17.5 | 250V C.T. @ 45 ma | 6.3V @ 1A | 1 | 3.25 | 1.65 | 2.00 | 2.81 | 0.19 | 1 |
| PWDP13184 | 12.6 | 250V @ 25 ma | 6.3Vct @ 1A | See PDF | - | - | - | - | - | 1 |
| 261D6 | 19.4 | 250V C.T. @ 50 ma | 6.3V @ 1.1A | See PDF | - | - | - | - | - | 1.5 |
| 261E6 | 29 | 250V C.T. @ 91 ma | 6.3V @ 1A | 1 | 3.69 | 1.85 | 2.31 | 3.13 | 0.19 | 1.7 |
| 261G6 | 45 | 250V C.T. @ 130 ma | 6.3V @ 2A | 1 | 4.00 | 2.25 | 2.63 | 3.56 | 0.19 | 2 |
| 261GE6 | 45 | 250V C.T. @ 130 ma | 6.3V @ 2A | 1 | 4.00 | 2.25 | 2.63 | 3.56 | 0.19 | 2 |
| 261M6 | 83 | 215V @ 269 ma | 6.3V @ 4A | 2 | 4.50 | 2.50 | 2.93 | 4.00 | 0.20 x 0.31 | 4 |
| 262A12 | 6 | 125V @ 15ma | 12.6V @ 0.3A | See PDF | - | - | - | - | - | - |
| 262B6 | 7 | 120V @ 43 ma | 6.3V @ 0.3A | 2 | 2.81 | 1.50 | 1.68 | 2.38 | 0.19 | 0.6 |
| 262B12 | 9 | 120V @ 45 ma | 12.6V @ 0.3A | 2 | 2.81 | 1.50 | 1.68 | 2.38 | 0.19 | 0.6 |
| 262B24 | 8 | 120V @ 27 ma | 12/12V @ 0.2/0.2A | 3 | 2.81 | 1.50 | 1.68 | 2.38 | 0.19 | 0.6 |
| 262D6 | 12 | 120V @ 53 ma | 6.3V @ 0.9A | 2 | 3.25 | 1.62 | 2.00 | 2.81 | 0.19 | 1 |
| 262D12 | 12 | 120V @ 53 ma | 12.6V @ 0.45A | 2 | 3.25 | 1.62 | 2.00 | 2.81 | 0.19 | 1 |
| 262E6 | 18 | 120V @ 87 ma | 6.3V @ 1.2A | 2 | 3.25 | 2.00 | 2.00 | 2.81 | 0.19 | 1.3 |
| 262EE6 | 18 | 120V @ 93 ma | 6.3V @ 1.2 A | See PDF | - | - | - | - | - | 1.3 |
| 262E12 | 18 | 120V @ 87 ma | 12.6V @ 0.6A | 2 | 3.25 | 2.00 | 2.00 | 2.81 | 0.19 | 1.3 |
| 262F6 | 26 | 120V @ 140 ma | 6.3V @ 1.5A | 2 | 3.69 | 1.85 | 2.31 | 3.13 | 0.19 | 1.7 |
| 262F12 | 26 | 120V @ 140 ma | 12.6V @ 0.75A | 2 | 3.69 | 1.85 | 2.31 | 3.13 | 0.19 | 1.5 |

