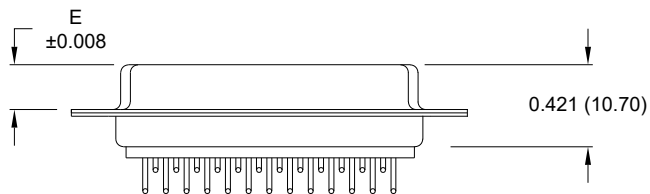
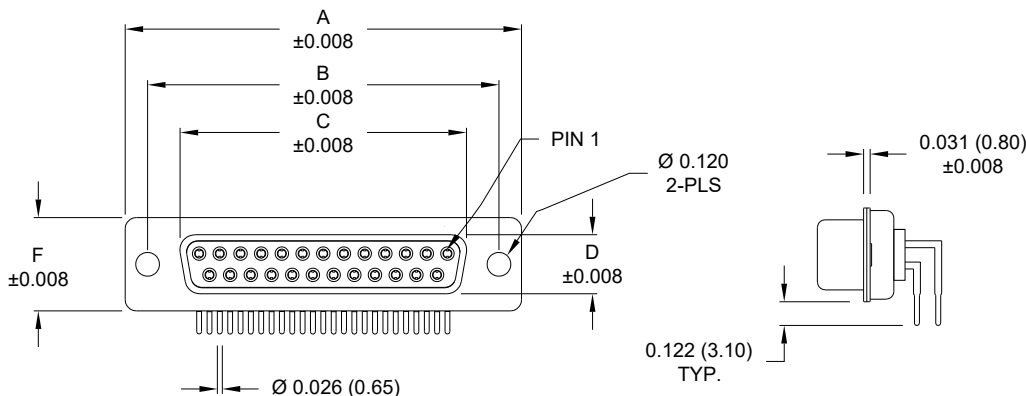


Description: 0.283" Right Angle / Machined

DIMENSIONS (inch/mm)

Pins	A	B	C	D	E	F
9	1.213	0.984	0.642	0.311	0.228	0.492
	30.80	25.00	16.30	7.90	5.80	12.50
15	1.541	1.312	0.970	0.311	0.228	0.492
	39.20	33.30	24.60	7.90	5.80	12.50
25	2.089	1.852	1.512	0.311	0.228	0.492
	53.05	47.05	38.40	7.90	5.80	12.50



Meets IP67 Standards

(See page 3 for sealing details)

Material:

- Shell: Nickel Plated Steel
- Insulator: Glass-Filled Nylon Thermoplastic, UL94 V-0
- Process Temperature: 260°C
- Contact: Precision Machined Copper Alloy
- Seal: Flexible F04 Adhesive

Electrical:

- Current Rating: 5 AMPS
- Contact Resistance: 10 mOhms Max.
- Insulation Resistance: 5 GOhms Min.
- Working Voltage: 250V
- Temperature: -55° C TO +125° C

7 7 3 - E Y Y - 2 1 Y R Y Y 1

- Series**
- Position**
 - E09
 - E15
 - E25
- Gender**
 - 2 = Female
- Termination**
 - 1 = PCB Mounting
- Shell Plating**
 - 3 = Nickel
- RoHS Compliant**
- Hardware Options**
 - 00 = No Hardware
 - 14 = Standard Bracket with 4-40 Screwlock
 - 46 = Boardlock Bracket with 4-40 Insert
- Plating Options**
 - 1 = Gold Flash
 - 2 = 30µ" Gold

RoHS COMPLIANT

UNITS = inch [mm]

DO NOT SCALE FROM DRAWING



THESE DRAWINGS AND SPECIFICATIONS ARE THE PROPERTY OF NorComp AND SHALL NOT BE REPRODUCED, COPIED OR USED AS THE BASIS FOR THE MANUFACTURE OR SALE OF APPARATUS WITHOUT WRITTEN PERMISSION.

DRAWN:
M. Sigmon

DATE:
07/26/2012

NorComp

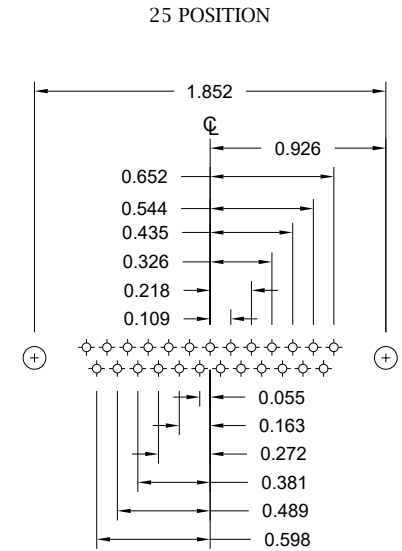
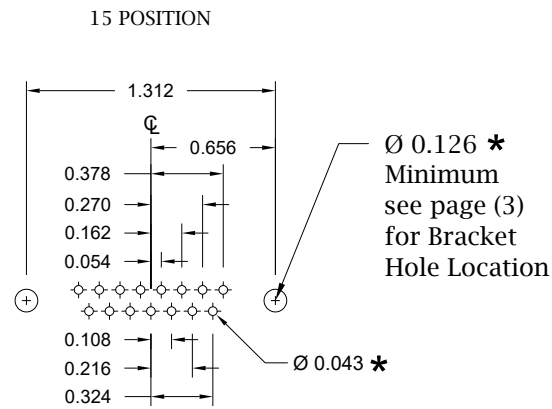
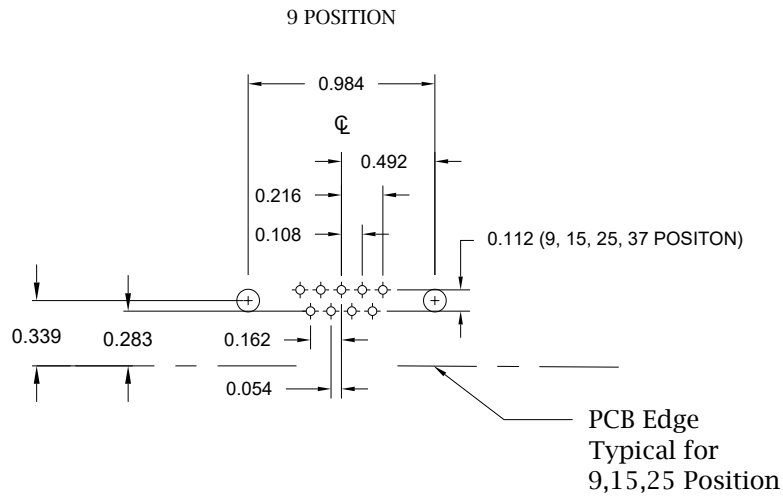
SCALE:
NTS

SHEET 1 OF 4

REV 11

DWG NO.

773-EYY-21YRY1



UNITS = inch

* Typical Suggested Size
May Not Be Suitable For All Applications

RoHS COMPLIANT

DO NOT SCALE FROM DRAWING



THESE DRAWINGS AND SPECIFICATIONS ARE THE PROPERTY OF NorComp AND SHALL NOT BE REPRODUCED, COPIED OR USED AS THE BASIS FOR THE MANUFACTURE OR SALE OF APPARATUS WITHOUT WRITTEN PERMISSION.

DRAWN:
M. Sigmon

DATE:
07/26/2012

NorComp

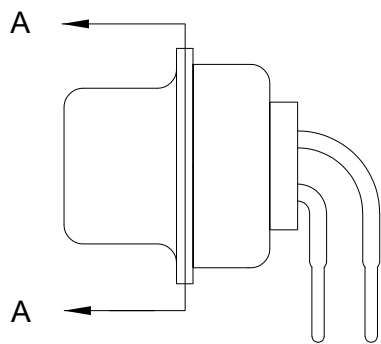
SCALE:
NTS

SHEET OF
2 4

REV
11

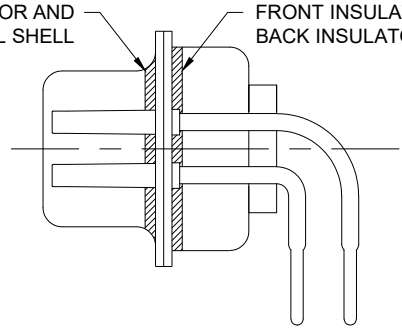
DWG NO.

773-EYY-21YRY1



FRONT SEAL APPLIED BETWEEN FRONT INSULATOR AND FRONT METAL SHELL

MIDDLE SEAL APPLIED BETWEEN FRONT INSULATOR AND BACK INSULATOR



DETAIL A-A

RoHS COMPLIANT

DO NOT SCALE FROM DRAWING



THESE DRAWINGS AND SPECIFICATIONS ARE THE PROPERTY OF NorComp AND SHALL NOT BE REPRODUCED, COPIED OR USED AS THE BASIS FOR THE MANUFACTURE OR SALE OF APPARATUS WITHOUT WRITTEN PERMISSION.

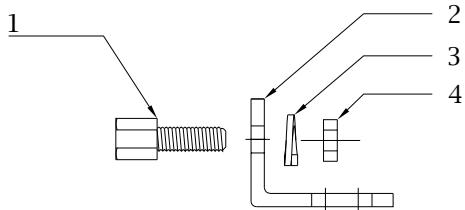
DRAWN:
M. Sigmon

DATE:
07/26/2012

NorComp

SCALE: NTS	SHEET 3	OF 4	REV 11
DWG NO.		773-EYY-21YRYY1	

14 Hardware Option		
	Description	NorComp Part Number
1	4-40 Screwlock	SFSO4401NR
2	Bracket	K501CZ
3	Lock Washer	LW1T
4	4-40 Nut	N4401N

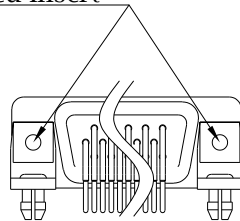


**Search Hardware Part Number To Obtain Technical Specifications.

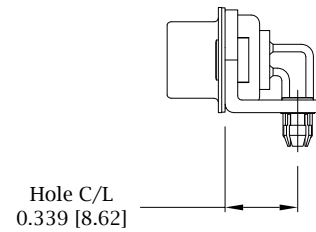
46 Hardware Option

Boardlock Bracket and 4-40 Insert

#4-40 Threaded Insert



9-25 Position Connector Boardlock Bracket



Boardlock Brackets Come Assembled On Connector

Recommend max torque for all options => 40 in-oz

RoHS COMPLIANT



THESE DRAWINGS AND SPECIFICATIONS ARE THE PROPERTY OF NorComp AND SHALL NOT BE REPRODUCED, COPIED OR USED AS THE BASIS FOR THE MANUFACTURE OR SALE OF APPARATUS WITHOUT WRITTEN PERMISSION.

DRAWN:
M. Sigmon

DATE:
07/26/2012

UNITS = inch [mm]

DO NOT SCALE FROM DRAWING

NorComp

SCALE:
NTS

SHEET 4 OF 4

REV 11

DWG NO.

773-EYY-21YRY1