

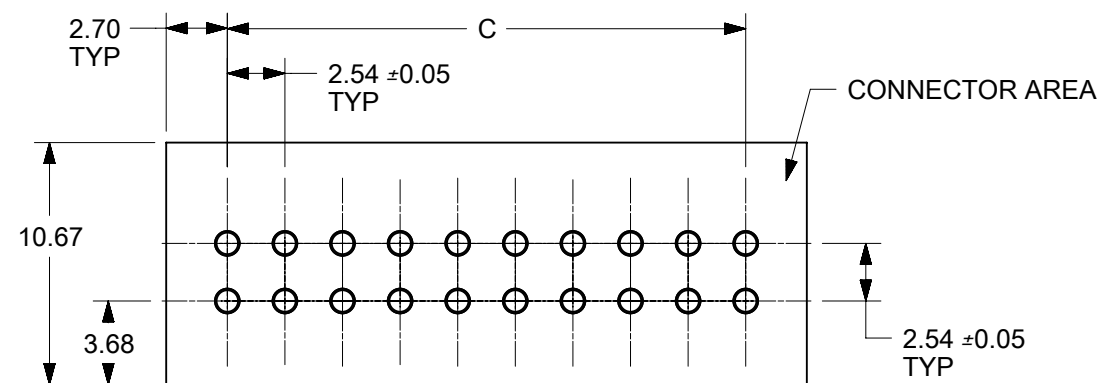
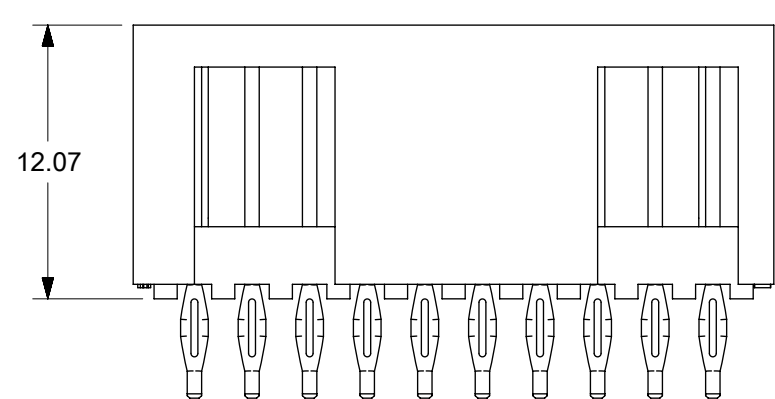
OPTION A

SECTION A-A

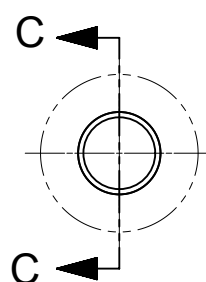
NOTES:

- HOUSING MATERIAL: LCP, UL94V-0, BLACK
PIN MATERIAL: COPPER ALLOY
- FINISH
TIN = 5.08 MICROMETER MIN OVER NICKEL
0.38 GOLD = SELECT GOLD 0.38 MICROMETERS MIN
SELECT TIN 2.54 MICROMETERS MIN
BOTH OVER NICKEL
0.75 GOLD = SELECT GOLD 0.75 MICROMETERS MIN
SELECT TIN 2.54 MICROMETERS MIN
BOTH OVER NICKEL
- PRODUCT SPECIFICATION: PS-75100-001
- PACKAGING SPECIFICATION: PK-70873-0018
- COSMETIC SPECIFICATION: PS-45499-002 CLASS B
- MATES WITH 70450 VERSION A

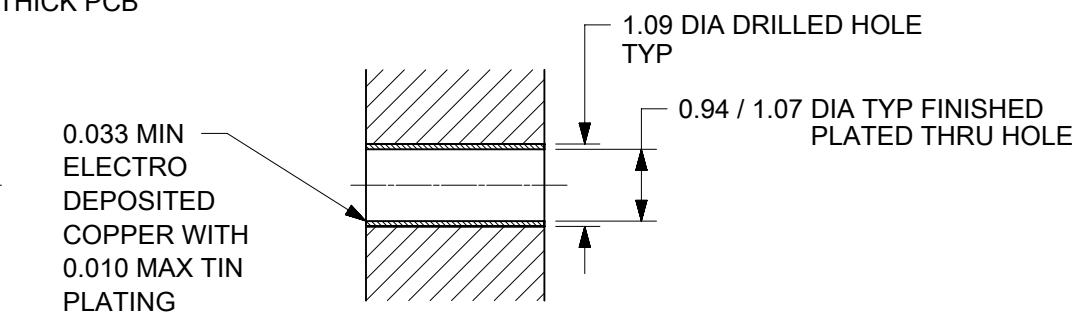
CKTS	DIM A	DIM B	DIM C	TIN	0.38 GOLD	0.75 GOLD
				MATERIAL NUMBER	MATERIAL NUMBER	MATERIAL NUMBER
6	10.46	8.43	5.08	75101-0171	75101-0137	75101-0001
8	13.00	10.97	7.62	75101-0172	75101-0138	75101-0002
10	15.54	13.51	10.16	75101-0173	75101-0139	75101-0003
12	18.08	16.05	12.70	75101-0174	75101-0140	75101-0004
14	20.62	18.59	15.24	75101-0175	75101-0141	75101-0005
16	23.16	21.13	17.78	75101-0176	75101-0142	75101-0006
18	25.70	23.67	20.32	75101-0177	75101-0143	75101-0007
20	28.24	26.21	22.86	75101-0178	75101-0144	75101-0008
22	30.78	28.75	25.40	75101-0179	75101-0145	75101-0009
24	33.32	31.29	27.94	75101-0180	75101-0146	75101-0010
26	35.86	33.83	30.48	75101-0181	75101-0147	75101-0011
28	38.40	36.37	33.02	75101-0182	75101-0148	75101-0012
30	40.94	38.91	35.56	75101-0183	75101-0149	75101-0013
32	43.48	41.45	38.10	75101-0184	75101-0150	75101-0014
34	46.02	43.99	40.64	75101-0185	75101-0151	75101-0015
36	48.56	46.53	43.18	75101-0186	75101-0152	75101-0016
38	51.10	49.07	45.72	75101-0187	75101-0153	75101-0017
40	53.64	51.61	48.26	75101-0188	75101-0154	75101-0018
42	56.18	54.15	50.80	75101-0189	75101-0155	75101-0019
44	58.72	56.69	53.34	75101-0190	75101-0156	75101-0020
46	61.26	59.23	55.88	75101-0191	75101-0157	75101-0021
48	63.80	61.77	58.42	75101-0192	75101-0158	75101-0022
50	66.34	64.31	60.96	75101-0193	75101-0159	75101-0023
52	68.88	66.85	63.50	75101-0194	75101-0160	75101-0024
54	71.42	69.39	66.04	75101-0195	75101-0161	75101-0025
56	73.96	71.93	68.58	75101-0196	75101-0162	75101-0026
58	76.50	74.47	71.12	75101-0197	75101-0163	75101-0027
60	79.04	77.01	73.66	75101-0198	75101-0164	75101-0028
62	81.58	79.55	76.20	75101-0199	75101-0165	75101-0029
64	84.12	82.09	78.74	75101-0200	75101-0166	75101-0030
66	86.66	84.63	81.28	75101-0201	75101-0167	75101-0031
68	89.20	87.17	83.82	75101-0202	75101-0168	75101-0032
70	91.74	89.71	86.36	75101-0203	75101-0169	75101-0033
72	94.28	92.25	88.90	75101-0204	75101-0170	75101-0034



PCB LAYOUT: COMPONENT SIDE
2.36 THICK PCB



DETAIL B
SCALE 10:1

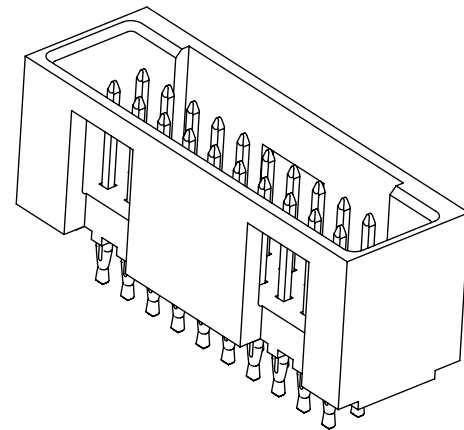
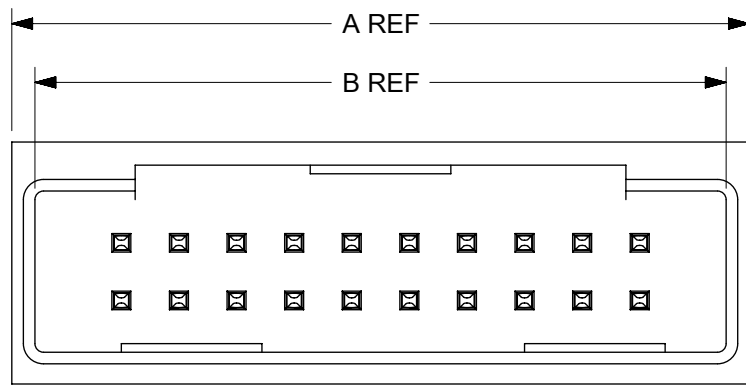


SECTION C-C

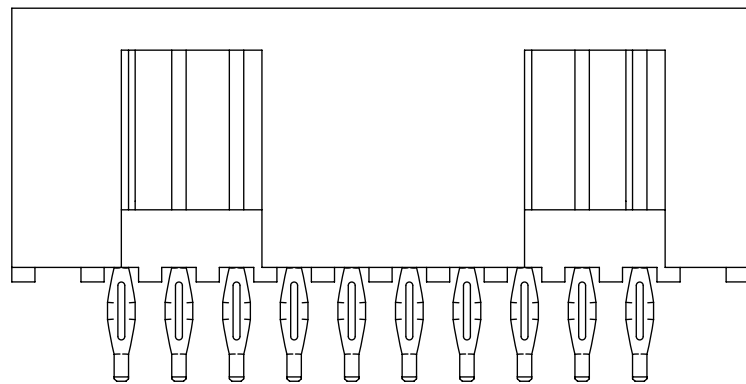
PLATED THRU HOLE
DETAILS

THIS DRAWING CONTAINS INFORMATION THAT IS PROPRIETARY TO MOLEX ELECTRONIC TECHNOLOGIES, LLC AND SHOULD NOT BE USED WITHOUT WRITTEN PERMISSION

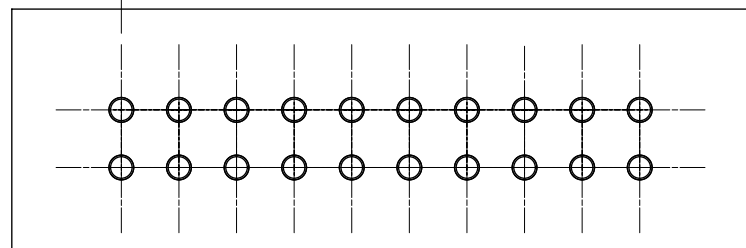
EC NO: 619055 DRWN: HK02 CHKD: NMANE02 APPR: MRAMAKRISHNA	2019/05/22 2019/07/09 2019/07/09	GENERAL TOLERANCES (UNLESS SPECIFIED) ANGULAR TOL ± °	DIMENSION UNITS: mm SCALE: 2:1		
	4 PLACES ± 3 PLACES ± 2 PLACES ± 0.25 1 PLACE ± 0 PLACES ± 0.0	DRWN BY: KSAMIEC DATE: 2017/06/23	CHKD BY: _____ DATE: _____		CGRID SHRD HDR ASSY WITH COMPLIANT PINS
	DRAFT WHERE APPLICABLE MUST REMAIN WITHIN DIMENSIONS	APPR BY: FSMITH DATE: 2017/07/26	DRAWING SIZE: B THIRD ANGLE PROJECTION		
	A1	REV: _____	SERIES: 75101 MATERIAL NUMBER: _____ CUSTOMER: _____		DOCUMENT NUMBER: 751010000-SD DOC TYPE: PSD DOC PART: 000 SHEET NUMBER: 1 OF 3



OPTION B
SAME AS OPTION A
EXCEPT AS SHOWN



4.83
TYP

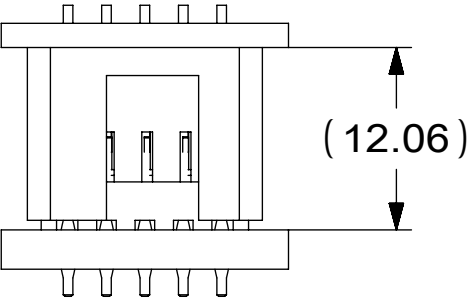
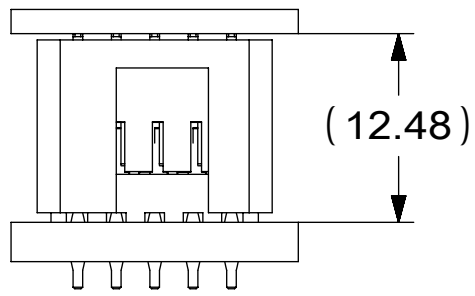


CKTS	DIM A	DIM B	TIN	0.38 GOLD	0.75 GOLD
			MATERIAL NUMBER	MATERIAL NUMBER	MATERIAL NUMBER
6	14.74	12.70	75101-0239	75101-0205	75101-0035
8	17.28	15.24	75101-0240	75101-0206	75101-0036
10	19.82	17.78	75101-0241	75101-0207	75101-0037
12	22.36	20.32	75101-0242	75101-0208	75101-0038
14	24.90	22.86	75101-0243	75101-0209	75101-0039
16	27.44	25.40	75101-0244	75101-0210	75101-0040
18	29.98	27.94	75101-0245	75101-0211	75101-0041
20	32.52	30.48	75101-0246	75101-0212	75101-0042
22	35.06	33.02	75101-0247	75101-0213	75101-0043
24	37.60	35.56	75101-0248	75101-0214	75101-0044
26	40.14	38.10	75101-0249	75101-0215	75101-0045
28	42.68	40.64	75101-0250	75101-0216	75101-0046
30	45.22	43.18	75101-0251	75101-0217	75101-0047
32	47.76	45.72	75101-0252	75101-0218	75101-0048
34	50.30	48.26	75101-0253	75101-0219	75101-0049
36	52.84	50.80	75101-0254	75101-0220	75101-0050
38	55.38	53.34	75101-0255	75101-0221	75101-0051
40	57.92	55.88	75101-0256	75101-0222	75101-0052
42	60.46	58.42	75101-0257	75101-0223	75101-0053
44	63.00	60.96	75101-0258	75101-0224	75101-0054
46	65.54	63.50	75101-0259	75101-0225	75101-0055
48	68.08	66.04	75101-0260	75101-0226	75101-0056
50	70.62	68.58	75101-0261	75101-0227	75101-0057
52	73.16	71.12	75101-0262	75101-0228	75101-0058
54	75.70	73.66	75101-0263	75101-0229	75101-0059
56	78.24	76.20	75101-0264	75101-0230	75101-0060
58	80.78	78.74	75101-0265	75101-0231	75101-0061
60	83.32	81.28	75101-0266	75101-0232	75101-0062
62	85.86	83.82	75101-0267	75101-0233	75101-0063
64	88.40	86.36	75101-0268	75101-0234	75101-0064
66	90.94	88.90	75101-0269	75101-0235	75101-0065
68	93.48	91.44	75101-0270	75101-0236	75101-0066
70	96.02	93.98	75101-0271	75101-0237	75101-0067
72	98.56	96.52	75101-0272	75101-0238	75101-0068

THIS DRAWING CONTAINS INFORMATION THAT IS PROPRIETARY TO MOLEX ELECTRONIC TECHNOLOGIES, LLC AND SHOULD NOT BE USED WITHOUT WRITTEN PERMISSION

EC NO: 619055 DRWN: HK02 CHK'D: NMANE02 APPR: MRAMAKRISHNA 2019/05/22 2019/07/09 2019/07/09	GENERAL TOLERANCES (UNLESS SPECIFIED)		DIMENSION UNITS	SCALE				
	ANGULAR TOL ± °		mm	3:1				
	4 PLACES ±	3 PLACES ±	DRWN BY	DATE	CGRID SHRD HDR ASSY WITH COMPLIANT PINS			
	2 PLACES ± 0.25	1 PLACE ±	KSAMIEC	2017/06/23				
0 PLACES ± 0.0	DRAFT WHERE APPLICABLE MUST REMAIN WITHIN DIMENSIONS	CHK'D BY	DATE	PRODUCT CUSTOMER DRAWING				
		FSMITH	2017/07/26					
A1	REV	DRAWING SIZE	THIRD ANGLE PROJECTION	SERIES	MATERIAL NUMBER	CUSTOMER		
		B		75101	SEE CHART			
RELEASE STATUS P1		RELEASE DATE	2019/07/09	06:48:17	DOCUMENT NUMBER	DOC TYPE	DOC PART	SHEET NUMBER
					751010000-SD	PSD	000	2 OF 3

BOARD TO BOARD (BTB) DISTANCE

HEADER	MATES WITH (RECEPTACLE)	BTB DIST.	PICTORIAL VIEW
75101	71850	12.06	
	71395	12.48	

THIS DRAWING CONTAINS INFORMATION THAT IS PROPRIETARY TO MOLEX ELECTRONIC TECHNOLOGIES, LLC AND SHOULD NOT BE USED WITHOUT WRITTEN PERMISSION

DIMENSION UNITS mm	SCALE 1:1	CURRENT REV DESC: WAS SD-75101-001		molex		
GENERAL TOLERANCES (UNLESS SPECIFIED)		EC NO: 619055				
ANGULAR TOL ± °		DRWN: HK02 2019/05/22		PRODUCT CUSTOMER DRAWING		
4 PLACES ±		CHK'D: NMANE02 2019/07/09		DOCUMENT NUMBER		
3 PLACES ±		APPR: MRAMAKRISHNA 2019/07/09		751010000-SD		
2 PLACES ± 0.25		INITIAL REVISION:		DOC TYPE	DOC PART	REVISION
1 PLACE ±		DRWN: KSAMIEC 2017/06/23		PSD	000	A1
0 PLACES ± 0.0		APPR: FSMITH 2017/07/26		SHEET NUMBER		
DRAFT WHERE APPLICABLE MUST REMAIN WITHIN DIMENSIONS	THIRD ANGLE PROJECTION	DRAWING	SERIES	MATERIAL NUMBER	CUSTOMER	3 OF 3
		B-SIZE	75101			