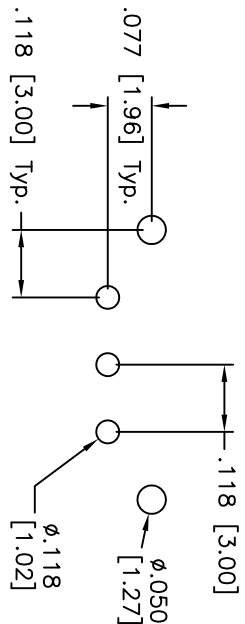
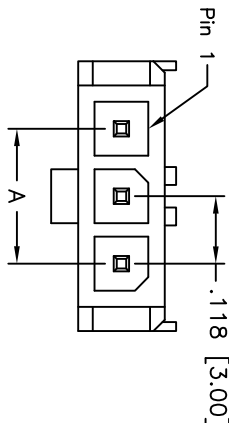
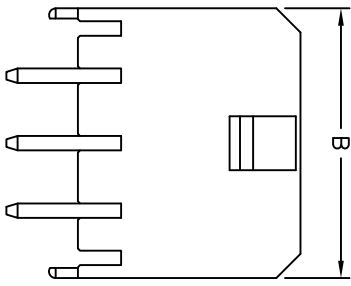
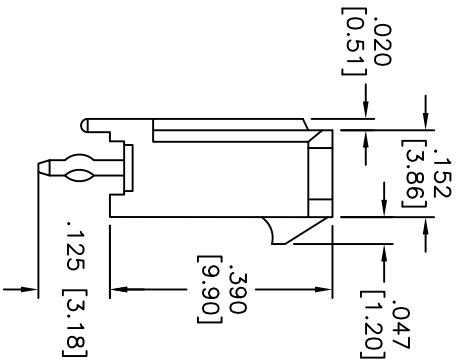


Rev	AWO #	Description	Date	Appr
-		RELEASED	8/06/10	

APPROVED: _____
 DATE: _____ TITLE: _____



RECOMMENDED PCB LAYOUT



POSITIONS	Dimension	
	A	B
2	.118 [3.00]	.380 [9.65]
3	.236 [6.00]	.498 [12.65]
4	.354 [9.00]	.616 [15.65]
5	.472 [12.00]	.734 [18.65]
6	.591 [15.00]	.852 [21.65]
7	.709 [18.00]	.970 [24.65]
8	.827 [21.00]	1.088 [27.65]
9	.945 [24.00]	1.206 [30.65]
10	1.063 [27.00]	1.325 [33.65]
11	1.181 [30.00]	1.443 [36.65]
12	1.299 [33.00]	1.561 [39.65]

SPECIFICATIONS:

Material: Thermoplastic, rated UL 94V-0
 Insulator color: Black
 Contact: Brass, Tin plated
 Electrical:
 Operating voltage: 250 VAC
 Current rating: 20 Awg: 5 Amps max
 22 Awg: 5 Amps max
 24 Awg: 4 Amps max
 26 Awg: 3 Amps max
 28 Awg: 2 Amps max
 30 Awg: 1 Amp max.

Contact resistance: 10 mohms max.
 Dielectric strength: 1500 VAC for 1 minute
 Temperature rise: 50°C max.

Mechanical:
 Wire size: 20 Awg thru 30 Awg
 Environmental:
 Lead free, RoHS compliant.



UNLESS OTHERWISE SPECIFIED
 ALL DIMENSIONS ARE IN INCHES [MM]
 TOLERANCES: EXCEPT AS NOTED
 INCHES HOLEES
 .X ± .10 ØXX ± .10
 .XX ± .020 ØXXX ± .015
 .XXX ± .015 ØXXX ± .010

ADAM TECH
 909 Railway Avenue, Union, NJ 07083
 Phone: 908-687-5000 Fax: 908-687-5710

DRAWN	DY	8/06/10	SIZE	PART NO.	REV.
CHECKED			X	DML-1-XX-A-V-T-A	
APPROVED			REF: S0072T	SCALE: NTS	SHEET 1 OF 1