

SPECIFICATIONS:

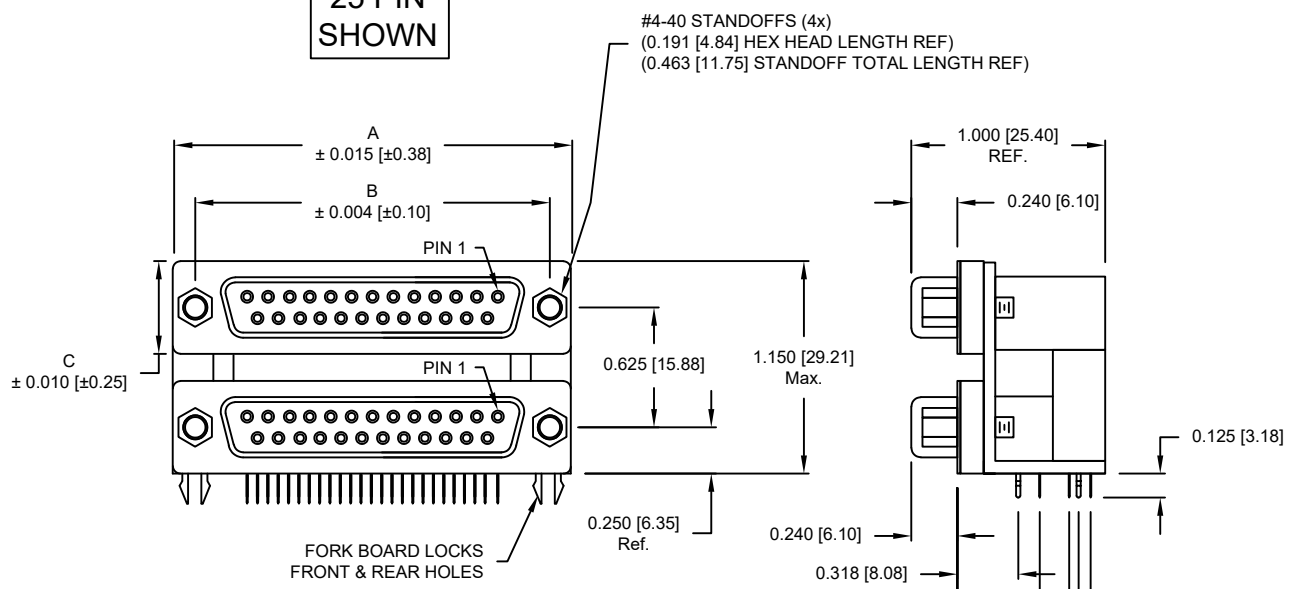
ELECTRICAL:

INSULATION RESISTANCE: 1000 Ω MIN.
 DIELECTRIC WITHSTANDING VOLTAGE: 1000 VAC FOR 1 MIN
 CURRENT RATING: 5 AMPS
 OPERATING TEMPERATURE: -55°C TO +105°C

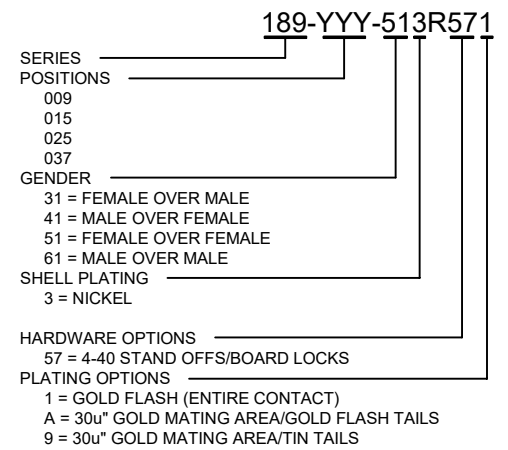
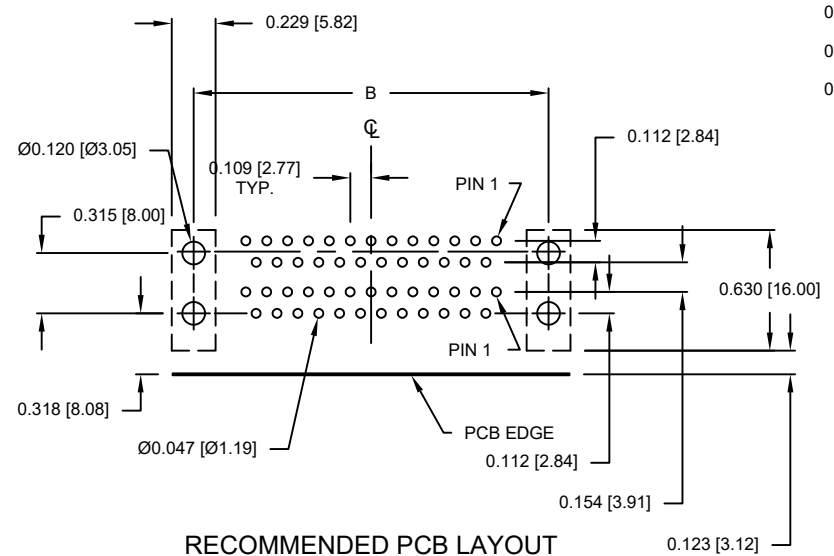
MATERIALS:

CONTACTS: BRASS
 CONTACT PLATING: GOLD PLATED ENTIRE CONTACT
 INSULATOR: UL94V-0 RATED, BLACK PA9T
 260°C PROCESS TEMP.
 SHELL: NICKEL PLATED STEEL

**25 PIN
SHOWN**



POS	DIMENSIONS			
	9	15	25	37
A	1.204 [30.58]	1.535 [38.99]	2.078 [52.78]	2.724 [69.19]
B	0.984 [24.99]	1.312 [33.32]	1.850 [46.99]	2.500 [63.50]
C	0.494 [12.55]	0.494 [12.55]	0.494 [12.55]	0.494 [12.55]



RoHS COMPLIANT

UNITS = inch [mm]

DO NOT SCALE FROM DRAWING



THESE DRAWINGS AND SPECIFICATIONS ARE THE PROPERTY OF NorComp AND SHALL NOT BE REPRODUCED, COPIED OR USED AS THE BASIS FOR THE MANUFACTURE OR SALE OF APPARATUS WITHOUT WRITTEN PERMISSION.

DRAWN:
C. SMITH
 DATE:
03/30/2007

NorComp

SCALE: NTS	SHEET 1	OF 1	REV 10
DWG NO. 189-YYY-513R571			