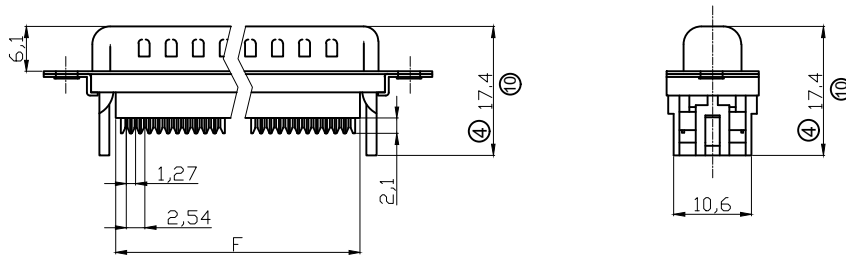
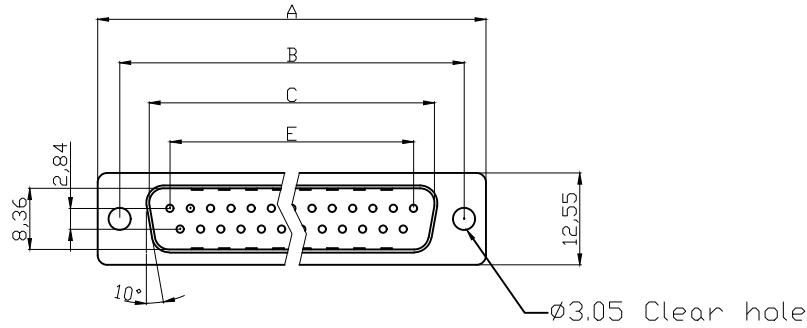
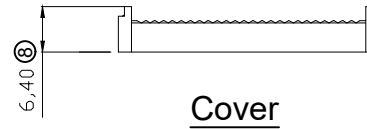
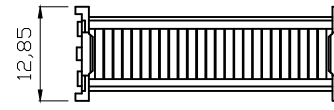


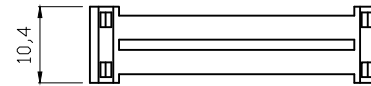
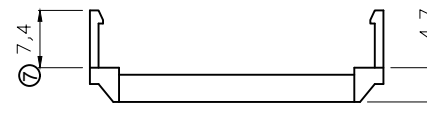
Male



Without Insulator Support



Cover



Strain Relief

Product Specification

Material

Insulator : Glass-Filled Thermoplastic PBT, UL94V-0,Black  
 Contact : Copper alloy, plating gold flash selective gold  
 Shell : Steel, 100u" Tin Over 50u" min Copper

Electrical

Contact Resistance : 20 milliohms Max at 1 AMP DC.  
 Insulation Resistance : 1000 magohms at 500 VDC  
 Dielectric Withstanding Voltage : 1000 VAC/rms 60Hz for 1 minute  
 Current Rating : 3 AMP  
 Volatge Rating : 250 VAC/rms 60Hz  
 Wire Spec : 26 AWG~28 AWG  
 Operating Temperature: -55°C~+105°C

⑤ UL E No #E198287

⑪ Order Code:

A-DxF xx LPIII/Z-x

Contact style:  
 F - Female  
 S - Male

No. of Contacts  
 09 / 15 / 25 / 37  
 Standard: Quality class III

Flange mounting option  
 Blank - Ø3.05 clear hole  
 UNC - #4-40UNC  
 M3 - M3 thread

Dimensions

Positions	A	B	C	E	F
9	30.81	24.99	16.92	11.08	13.10
15	39.20	33.30	25.25	19.39	20.70
25	53.04	47.04	38.96	33.24	33.68
37	69.40	63.50	55.42	49.86	50.30

RoHS compliant

Unit:mm



⑨ E198287

Scale	Free	⑪	Add P/N and sheet 3~6	29.04.2022	Daniel		Date	Name	Customer-No.
TOLERANCE		⑩	Update the tolerance of DIM 17.1&17.4	25.05.2021	Daniel	Drawn	15.08.2012	Lucas	ASSMANN WSW-No. ⑪ A-DxF xx LPIII/Z
X.	±0.38	⑨	Add UL logo	27.02.2020	Winnie	Approved	29.04.2022	Daniel	
X.X	±0.25	⑧	Update the dimension	27.02.2015	Winnie				Drawing-No. ASS 4891 CO rev11
X.XX	±0.13	⑦	Update the dimension &shape of cover	09.07.2014	Winnie				
DIM	TOL	⑥	Update the operating temperature	05.06.2014	Winnie				Replace Sheet 1/6
X.°	±3°	Id.	Modification	Date	Name				
X.X°	±1.0°								
Angle	TOL								



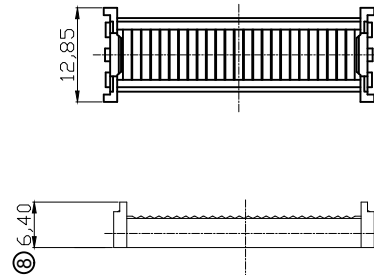
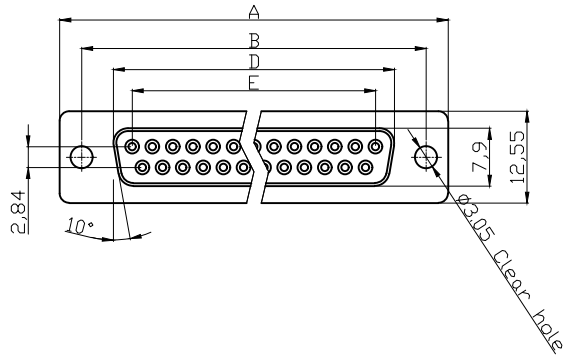
ASS 4891 CO

rev11

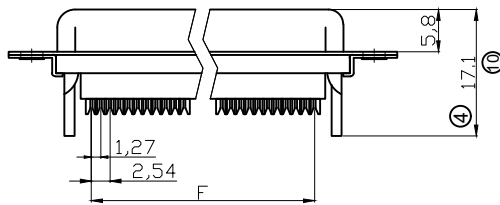
Replace

Sheet  
1/6

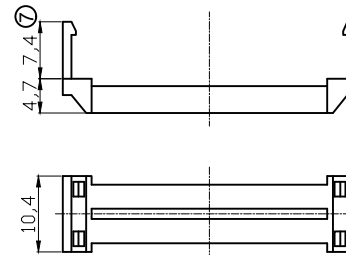
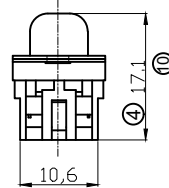
**Female**



Cover



Without Insulator Support



Strain Relief

**NOTES:**

**MATERIAL**

- 1. Insulator Material: Glass-Filled Thermoplastic PBT, UL 94V-0
- 2. Contact Material: Copper alloy
- 3. Shell: SPCC
- 4. Plating: Selective Gold Flash

**ELECTRICAL**

- 1. Current Rating: 3 AMP
- 2. Voltage Rating: 250 V AC/rms 60 Hz
- 3. Contact Resistance: 20mΩ max at 1 AMP DC
- 4. Insulation Resistance: 1000MΩ at 500 VDC
- 5. Withstand Voltage: 1000V AC/rms 60Hz for 1 minute
- 6. Wire Spec: 26 AWG~28 AWG
- 7. Operating temperature: -55°C+105°C

UL E No #E198287

Order Code:

A-DxF xx LPIII/Z-x

Contact style:  
F - Female  
S - Male

No. of Contacts  
09 / 15 / 25 / 37

Standard: Quality class III

Flange mounting option  
Blank - Ø3.05 clear hole  
UNC - #4-40UNC  
M3 - M3 thread

**Dimensions**

Positions	A	B	D	E	F
9	30.81	24.99	16.33	11.08	10.16
15	39.20	33.30	24.70	19.39	17.78
25	53.05	47.04	38.40	33.24	30.48
37	69.40	63.50	54.80	49.86	45.72

**RoHS compliant**

Unit:mm



⑨ E198287

Scale	Free	⑪	Add P/N and sheet 3~6	29.04.2022	Daniel	Date	Name	Customer-No.
<b>TOLERANCE</b>		⑩	Update the tolerance of DIM 17.1&17.4	25.05.2021	Daniel	Drawn	15.08.2012	ASSMANN WSW-No. ⑩ A-DxF xx LPIII/Z
X.	±0.38	⑨	Add UL logo	27.02.2020	Winnie	Approved	29.04.2022	
X.X	±0.25	⑧	Update the dimension	27.02.2015	Winnie			Drawing-No. <b>ASS 4891 CO</b>
X.XX	±0.13	⑦	Update the dimension & shape of cover	09.07.2014	Winnie			
DIM	TOL	⑥	Update the operating temperature	05.06.2014	Winnie			Replace
X.°	±3°	Id.	Modification	Date	Name			
X.X°	±1.0°							
Angle	TOL							



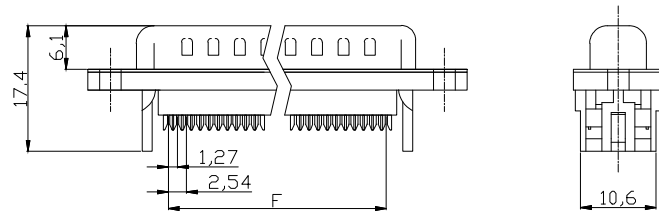
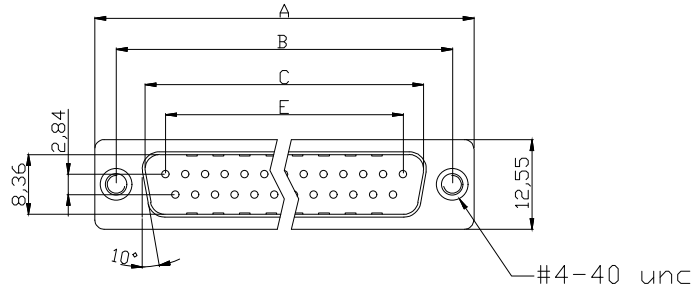
ASS 4891 CO

rev11

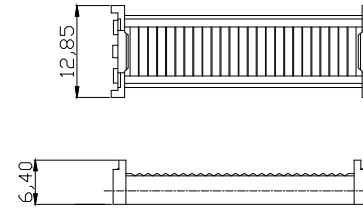
Replace

Sheet 2/6

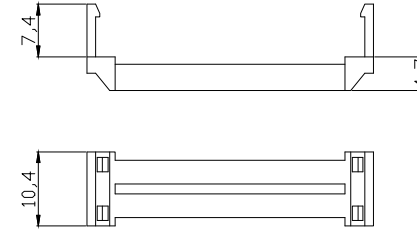
**Male**



With Insulator Support



Cover



Strain Relief

**Product Specification**

**Material**

Insulator : Glass-Filled Thermoplastic PBT, UL94V-0,Black  
 Contact : Copper alloy, plating gold flash selective gold  
 Shell : Steel, 100u" Tin Over 50u" min Copper  
 Clinch Nut : Brass, Nickel plated

**Electrical**

Contact Resistance : 20 milliohms Max at 1 AMP DC.  
 Insulation Resistance : 1000 megohms at 500 VDC  
 Dielectric Withstanding Voltage : 1000 VAC/rms 60Hz for 1 minute  
 Current Rating : 3 AMP  
 Voltage Rating : 250 VAC/rms 60Hz  
 Wire Spec : 26 AWG-28 AWG  
 Operating Temperature: -55°C--+105°C

UL E No #E198287

⑪ Order Code: A-DxF xx LPIII/Z-x

Contact style:  
 F - Female  
 S - Male  
 No. of Contacts  
 09 / 15 / 25 / 37  
 Standard: Quality class III  
 Flange mounting option  
 Blank - Ø3.05 clear hole  
 UNC - #4-40UNC  
 M3 - M3 thread

**Dimensions**

Positions	A	B	C	E	F
9	30.81	24.99	16.92	11.08	13.10
15	39.20	33.30	25.25	19.39	20.70
25	53.04	47.04	38.96	33.24	33.68
37	69.40	63.50	55.42	49.86	50.30

**RoHS compliant**

Unit:mm



⑨ E198287

Scale	Free	⑪	Add P/N and sheet 3~6	29.04.2022	Daniel	Date	Name	Customer-No.
<b>TOLERANCE</b>		⑩	Update the tolerance of DIM 17.1&17.4	25.05.2021	Daniel	Drawn	15.08.2012	ASSMANN WSW-No. ⑪ A-DxF xx LPIII/Z-UNC
X.	±0.38	⑨	Add UL logo	27.02.2020	Winnie	Approved	29.04.2022	
X.X	±0.25	⑧	Update the dimension	27.02.2015	Winnie			Drawing-No. <b>ASS 4891 CO</b>
X.XX	±0.13	⑦	Update the dimension & shape of cover	09.07.2014	Winnie			
DIM	TOL	⑥	Update the operating temperature	05.06.2014	Winnie			Replace
X.°	±3°	Id.	Modification	Date	Name			
X.X°	±1.0°							
Angle	TOL							



**ASS 4891 CO**

rev11

Replace

Sheet 3/6

# Female

**NOTES:**

**MATERIAL**

- 1. Insulator Material: Glass-Filled Thermoplastic PBT, UL 94V-0
- 2. Contact Material: Copper alloy, Gold Flash selective gold
- 3. Shell: SPCC
- 4. Clinch Nut: Brass, Nickel plated
- 5. Screwlock: Brass, Nickel plated

**ELECTRICAL**

- 1. Current Rating: 3 AMP
- 2. Voltage Rating: 250 V AC/rms 60 Hz
- 3. Contact Resistance: 20mΩ max at 1 AMP DC
- 4. Insulation Resistance: 1000MΩ at 500 VDC
- 5. Withstand Voltage: 1000V AC/rms 60Hz for 1 minute
- 6. Wire Spec: 26 AWG-28 AWG
- 7. Operating temperature: -55°C+105°C

UL E No #E198287

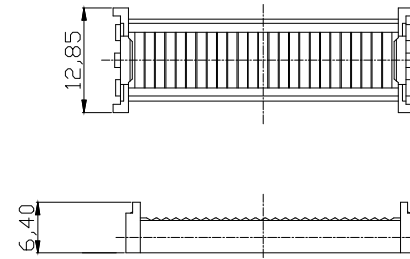
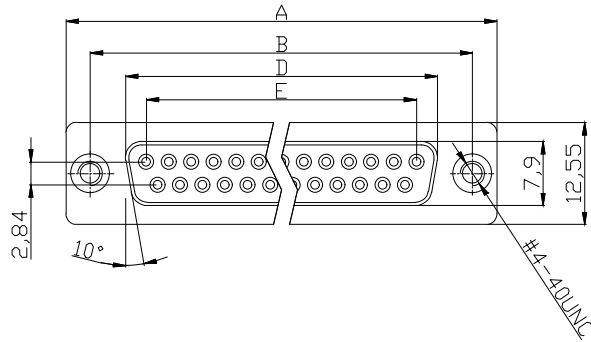
⑪ Order Code:

A-DxF xx LPIII/Z-x

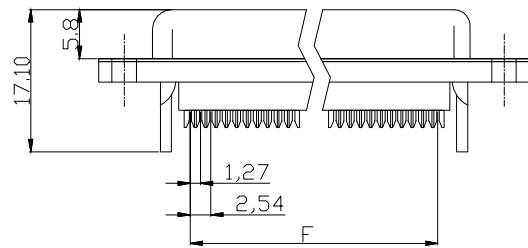
Contact style:  
 F - Female  
 S - Male

No. of Contacts  
 09 / 15 / 25 / 37  
 Standard: Quality class III

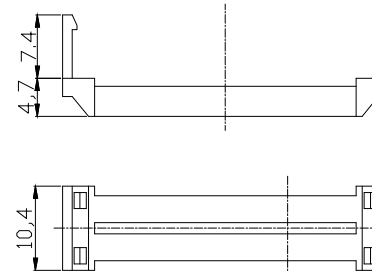
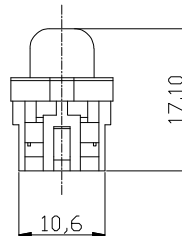
Flange mounting option  
 Blank - Ø3.05 clear hole  
 UNC - #4-40UNC  
 M3 - M3 thread



Cover



With Insulator Support



Strain Relief

Dimensions

Positions	A	B	D	E	F
9	30.81	24.99	16.33	11.08	10.16
15	39.20	33.30	24.70	19.39	17.78
25	53.05	47.04	38.40	33.24	30.48
37	69.40	63.50	54.80	49.86	45.72

**RoHS compliant**

Unit:mm



Scale	Free	⑪	Add P/N and sheet 3~6	29.04.2022	Daniel		Date	Name	Customer-No.	
<b>TOLERANCE</b>		⑩	Update the tolerance of DIM 17.1&17.4	25.05.2021	Daniel	Drawn	15.08.2012	Lucas	ASSMANN WSW-No. ⑪ A-DxF xx LPIII/Z-UNC	
X.	±0.38	⑨	Add UL logo	27.02.2020	Winnie	Approved	29.04.2022	Daniel		
X.X	±0.25	⑧	Update the dimension	27.02.2015	Winnie					
X.XX	±0.13	⑦	Update the dimension & shape of cover	09.07.2014	Winnie	<b>ASSMANN</b> WSW components			Drawing-No.	
DIM	TOL	⑥	Update the operating temperature	05.06.2014	Winnie				<b>ASS 4891 CO</b>	rev11
X.°	±3°	Id.	Modification	Date	Name				Replace	Sheet 4/6
X.X°	±1.0°									
Angle	TOL									



ASS 4891 CO rev11

Replace Sheet 4/6

1 2 3 4 5 6 7

A Male

Cover

With Insulator Support

Strain Relief

Product Specification

Material

Insulator : Glass-Filled Thermoplastic PBT, UL94V-0,Black  
 Contact : Copper alloy, plating gold flash selective gold  
 Shell : Steel, 100u" Tin Over 50u" min Copper

Electrical

Contact Resistance : 20 milliohms Max at 1 AMP DC.  
 Insulation Resistance : 1000 megohms at 500 VDC  
 Dielectric Withstanding Voltage : 1000 VAC/rms 60Hz for 1 minute  
 Current Rating : 3 AMP  
 Voltage Rating : 250 VAC/rms 60Hz  
 Wire Spec : 26 AWG~28 AWG  
 Operating Temperature: -55°C~+105°C

UL E No #E198287

① Order Code:

A-DxF xx LPIII/Z-x

Contact style:  
 F - Female  
 S - Male

No. of Contacts  
 09 / 15 / 25 / 37

Flange mounting option  
 Blank - Ø3.05 clear hole  
 UNC - #4-40UNC  
 M3 - M3 thread

Standard: Quality class III

Dimensions

Positions	A	B	C	E	F
9	30.81	24.99	16.92	11.08	13.10
15	39.20	33.30	25.25	19.39	20.70
25	53.04	47.04	38.96	33.24	33.68
37	69.40	63.50	55.42	49.86	50.30

RoHS compliant

Unit:mm

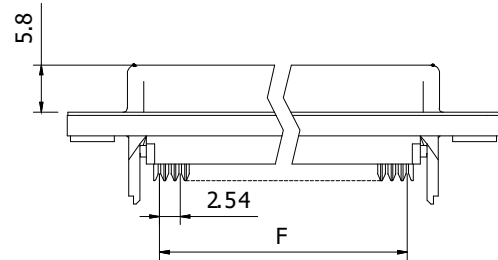
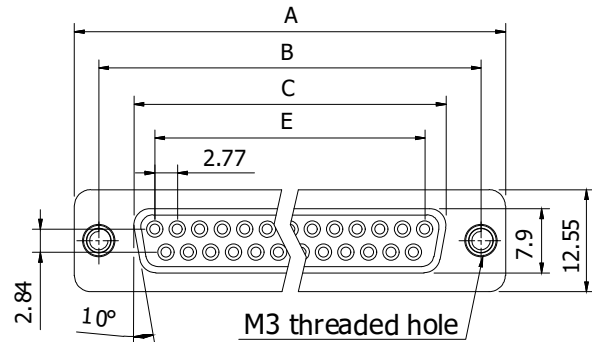
⑨ E198287

Scale	Free	①	Add P/N and sheet 3~6	29.04.2022	Daniel		Date	Name	Customer-No.	
TOLERANCE		⑩	Update the tolerance of DIM 17.1&17.4	25.05.2021	Daniel	Drawn	15.08.2012	Lucas	ASSMANN WSW-No. ① A-DxF xx LPIII/Z-M3	
X.	±0.38	⑨	Add UL logo	27.02.2020	Winnie	Approved	29.04.2022	Daniel		
X.X	±0.25	⑧	Update the dimension	27.02.2015	Winnie					
X.XX	±0.13	⑦	Update the dimension &shape of cover	09.07.2014	Winnie	ASSMANN WSW components			Drawing-No.	
DIM	TOL	⑥	Update the operating temperature	05.06.2014	Winnie				ASS 4891 CO	rev11
X.°	±3°	Id.	Modification	Date	Name				Replace	Sheet 5/6
X.X°	±1.0°									
Angle	TOL									

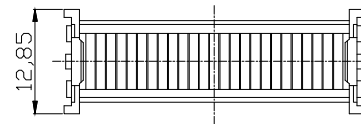
ASSMANN WSW-No.  
 ① A-DxF xx LPIII/Z-M3  
 Drawing-No.  
 ASS 4891 CO  
 rev11  
 Sheet 5/6

1 2 3 4 5 6 7

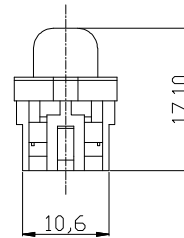
# Female



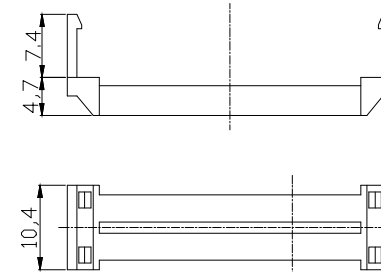
With Insulator Support



Cover



Strain Relief



**NOTES:**

**MATERIAL**

- 1. Insulator Material: Glass-Filled Thermoplastic PBT, UL 94V-0
- 2. Contact Material : Copper alloy, Gold Flash selective gold
- 3. Shell :SPCC

**ELECTRICAL**

- 1. Current Rating : 3 AMP
- 2. Voltage Rating : 250 V AC/rms 60 Hz
- 3. Contact Resistance: 20mΩ max at 1 AMP DC
- 4. Insulation Resistance: 1000MΩ at 500 VDC
- 5. Withstand Voltage : 1000V AC/rms 60Hz for 1 minute
- 6. Wire Spec : 26 AWG~28 AWG
- 7. Operating temperature:-55°C+105°C

UL E No #E198287

⑪ Order Code:

A-DxF xx LP III/Z-x

Contact style:  
F - Female  
S - Male

No. of Contacts  
09 / 15 / 25 / 37  
Standard: Quality class III

Flange mounting option  
Blank - Ø3.05 clear hole  
UNC - #4-40UNC  
M3 - M3 thread

**Dimensions**

Positions	A	B	D	E	F
9	30.81	24.99	16.33	11.08	10.16
15	39.20	33.30	24.70	19.39	17.78
25	53.05	47.04	38.40	33.24	30.48
37	69.40	63.50	54.80	49.86	45.72

**RoHS compliant**

Unit:mm



⑨ E198287

Scale	Free	⑪	Add P/N and sheet 3~6	29.04.2022	Daniel	Date	Name	Customer-No.
<b>TOLERANCE</b>		⑩	Update the tolerance of DIM 17.1&17.4	25.05.2021	Daniel	Drawn	15.08.2012	ASSMANN WSW-No. ⑪ A-DxF xx LP III/Z-M3
X.	±0.38	⑨	Add UL logo	27.02.2020	Winnie	Approved	29.04.2022	
X.X	±0.25	⑧	Update the dimension	27.02.2015	Winnie			Drawing-No. <b>ASS 4891 CO</b>
X.XX	±0.13	⑦	Update the dimension & shape of cover	09.07.2014	Winnie			
DIM	TOL	⑥	Update the operating temperature	05.06.2014	Winnie			Replace
X.°	±3°	Id.	Modification	Date	Name			
X.X°	±1.0°							
Angle	TOL							Sheet 6/6



ASS 4891 CO

rev11

Replace

Sheet 6/6